

Appendix 9.3 – Photographic Plates

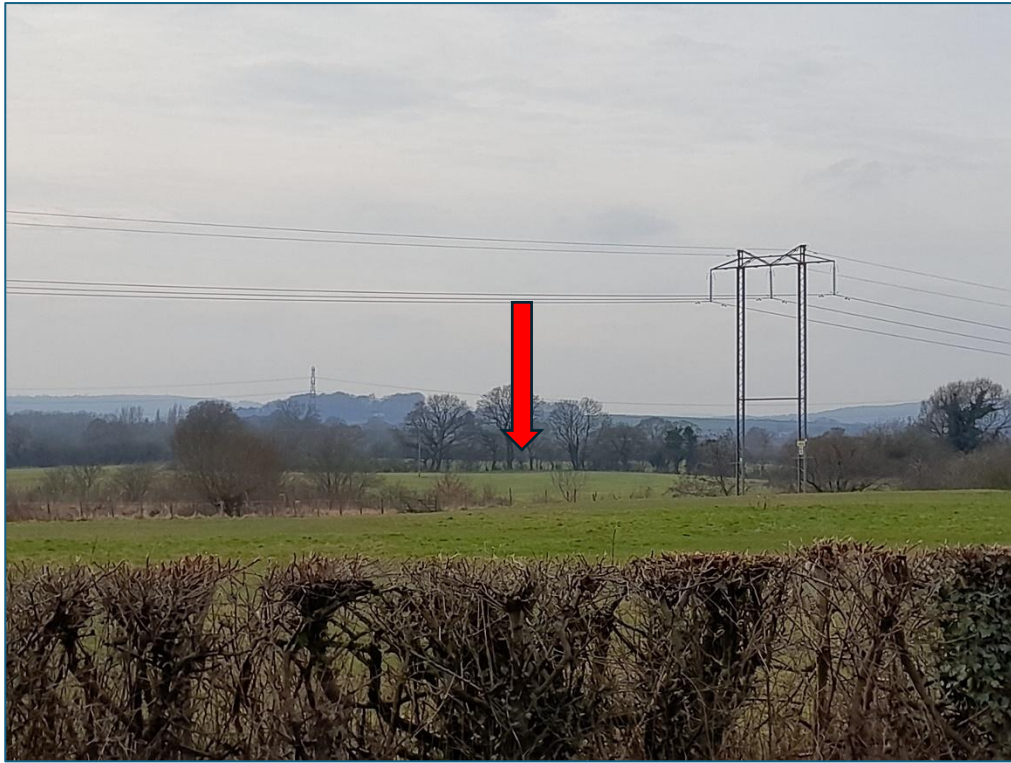


Plate 1: SW facing shot showing WAA from Asset 42 (Wat's Dyke)



Plate 2: NW facing shot showing WAA from Asset 35 (Wat's Dyke)



Plate 3: NW facing shot showing WAA from Asset 3 (Wat's Dyke)



Plate 4: N facing shot showing potential intervisibility with the WAA from Asset 25 (Wat's Dyke)

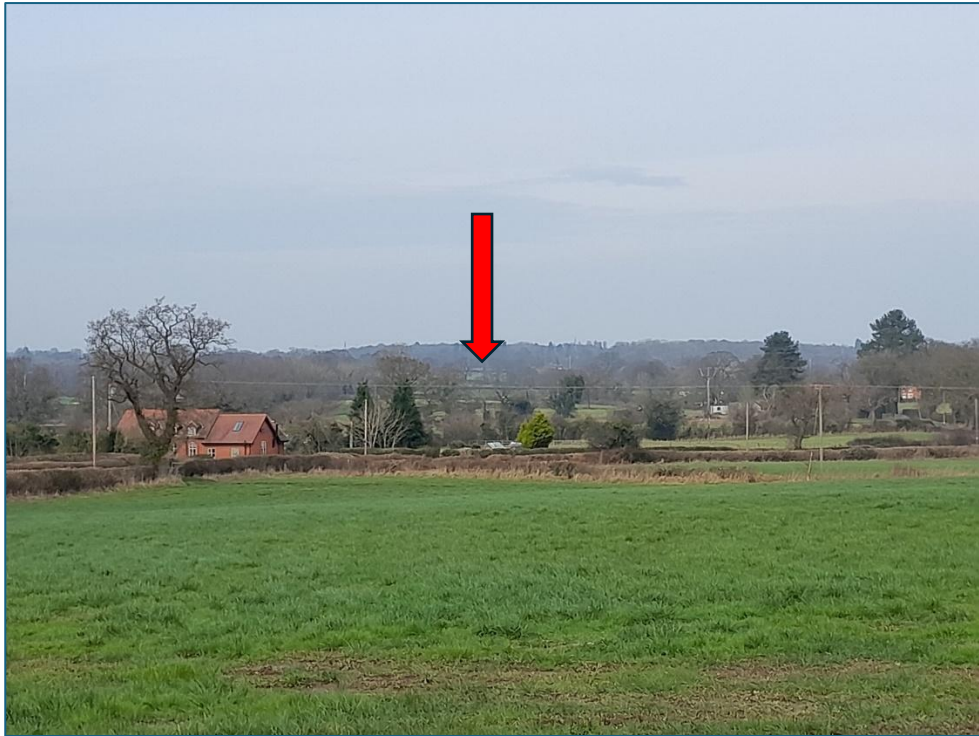


Plate 5: NNW facing shot showing potential intervisibility with the WAA from Asset 121



Plate 6: WNW facing shot showing potential intervisibility with the EAA from Assets 41 and 58



Plate 7: NW facing shot showing potential intervisibility with the EAA from Asset 88



Plate 8: NW facing shot showing potential intervisibility with the EAA from Asset 112



Plate 9: SW facing shot showing potential intervisibility with the EAA from Asset 177



Plate 10: S facing shot showing potential intervisibility with the CAA from Assets 79 and 208



Plate 11: SE facing shot showing Wat's Dyke (Asset 35), from SE extent of the WAA



Plate 12: N facing shot showing ridge and furrow towards the centre of the WAA



Plate 13: SE facing shot showing water-logged area towards the centre of the WAA



Plate 14: NE facing shot showing a possible previous boundary towards the centre of the WAA



Plate 15: SE facing shot showing ridge and furrow towards the centre of the WAA



Plate 16: SW facing shot showing water-logged area towards the N of the WAA



Plate 17: SW facing shot showing pond (Asset 791) towards the SW of the CAA



Plate 18: SW facing shot showing large depression towards the SW of the CAA



Plate 19: E facing shot showing large depression towards the S of the CAA



Plate 20: SE facing shot showing large depression towards the SE of the CAA



Plate 21: NW facing shot showing Assets 79 and 208 from SW of the CAA



Plate 22: W facing shot showing chimney of Assets 79 and 208 from S of the CAA



Plate 23: SW facing shot showing Assets 79 and 208 from NW of the CAA



Plate 24: SW facing shot showing Assets 79 and 208 from NW of the CAA



Plate 25: S facing shot showing general view from S of the EAA



Plate 26: NW facing shot showing animal burrow towards S of the EAA



Plate 27: S facing shot showing Bangor-On-Dee Racecourse and potentially Asset 88 from NE extent of the EAA



Plate

28: SE facing shot showing the spire of the Parish Church of Saint Dunward located within Bangor-is-y-Coed Conservation (Asset 58) from NE extent of the EAA