



# RWE



# Camster II Wind Farm

June 2024 Newsletter

## In this issue...

---

[Project update](#)

---

[Delivery route and timetable](#)

---

[RWE in your community](#)

## Welcome

**Hello and welcome to the latest edition of the Camster II newsletter, updating you on the recent developments of our onshore wind farm.**

Since our last newsletter, we have completed some major jobs including the onsite access tracks and associated infrastructure, preparing the site for the delivery of the main turbine components.

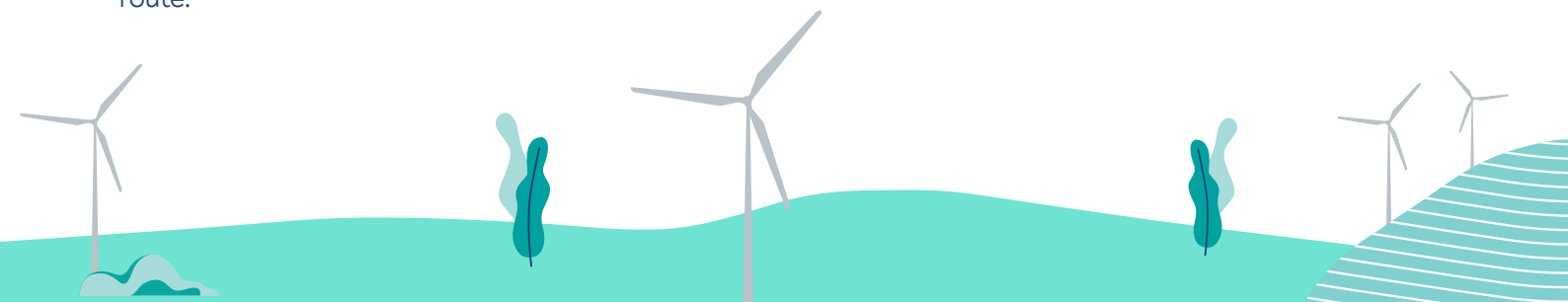
The turbines are made up of multiple components, which will be assembled onsite. Each turbine will be transported using specialist delivery vehicles and trailers. The largest components like the turbine blades and tower will require police escorts, while smaller components will be escorted by support vehicles from the delivery partner. All components will be driven to the site from Wick Harbour which is located approximately 5km to the west of Wick along the A882.

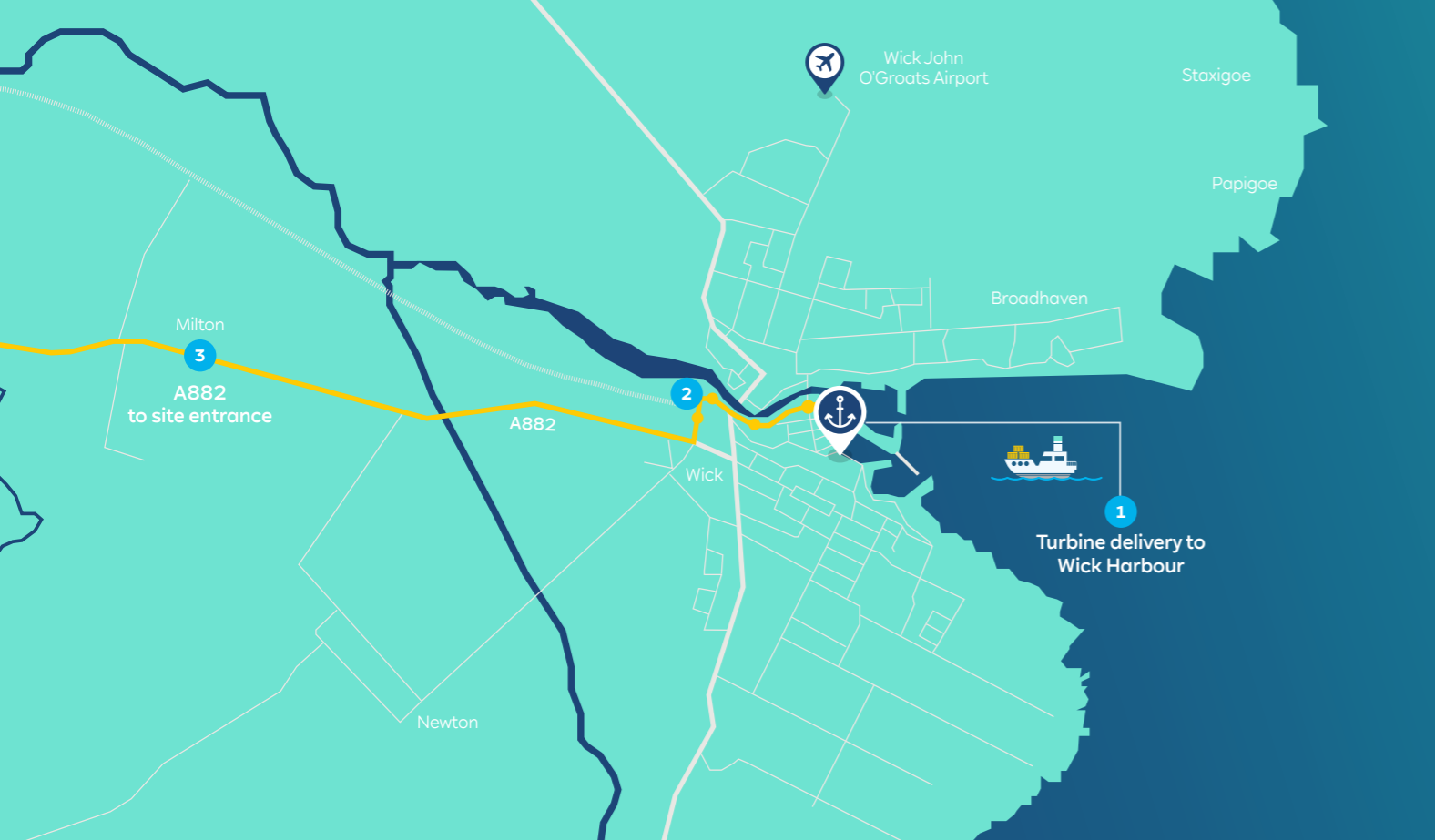
In preparation for the deliveries, some remedial work has taken place at certain points along the route.

You may have also noticed offsite access work around Bankhead in Wick. The temporary overrun areas are designed to accommodate larger vehicles, enabling the turbines to be transported from Wick Harbour to the A882 and then onwards to the site.

For the past year, RWE has worked closely with turbine manufacturers (Vestas), their delivery partners (McFayden's Transport Ltd), and other local authorities to try to minimise disruption to the community.

The initial turbines are expected to arrive at the Port of Wick from June 17th. As there is minimal storage space at the harbour, once offloaded, the deliveries will proceed directly to the site. We expect most of the deliveries to be completed by July 31st.





## Bringing the turbines to site

The delivery route is shown on the map above

Due to the sizeable load of the deliveries, some alterations have been made at certain points along the route to enable the components to pass through.

- 1 The convoy will begin at Wick Harbour, travelling up Martha Terrace and River Street.
- 2 It will then cross over the roundabout onto Station Road, following around onto Bankhead.
- 3 A right turn will then be made onto the A882 Thurso Road, continuing for a short distance before turning left onto the site.

At all times, the convoy will be accompanied by support vehicles from the delivery partner and Police Scotland. Police Scotland vehicles will ensure local traffic is held in place at key points along the delivery route, allowing the convoy to pass safely.

## Delivery timetable

We realise that any deliveries will affect the surrounding community. We apologise in advance for any potential delays that you may encounter on delivery days, and we hope that this is only temporary.

The delivery period will be from June 17th to July 31st. Deliveries are expected to take place during the day, with exact timings available on the camster II website. We recommend using alternative routes during these times, if possible.



For further updates, please visit:

[uk.rwe.com/project-proposals/camster-ii](http://uk.rwe.com/project-proposals/camster-ii)





## RWE in your community

“The playpark opened at the end of April 2023 and the response from the local community has been incredible, we have had such great feedback on how good the equipment is, how safe it is, and how much enjoyment it’s brought.

The park has a variety of equipment for all ages and some items are inclusive for wheelchair users. We have made sure to have plenty of seating and tables for picnics when Caithness weather allows.”

### Camster Wind Farm Community Fund

**RWE is committed to supporting communities that neighbour our wind farms. In 2023, RWE’s operational wind farms in Caithness collectively invested £367,526 in local projects.**

At Camster Wind Farm we have an operational community fund administered by Foundation Scotland, where all decisions on the allocation of funding are made by a panel of locals.

During the wind farm’s construction period, our community investment manager will work closely with local stakeholders to understand how best to structure the new funds to maximise benefits for local communities. Once operational, Camster II will bring a further £180,000 of community funding each year.

### Get in touch



**If you have any questions regarding Camster II Wind Farm or the upcoming deliveries, please contact us at:**

-  [uk.rwe.com/project-proposals/camster-ii](https://uk.rwe.com/project-proposals/camster-ii)
-  [camster2@rwe.com](mailto:camster2@rwe.com)

### Supporting local community groups

**Camster II Wind Farm is keen to get involved with the local community. In 2023, our community fund supported a variety of projects.**

We contributed £5,000 to the Caithness Voluntary Group to enable the continuation of a befriending and support service for people suffering from social isolation and loneliness. Watten and Lybster Community Councils both received funding for floral planters, baskets and shrubs. Additionally, an award to Thrumster Primary Parent Council paid for a storage container that freed up space in their outdoor classroom and is used by the school and the wider community.

In 2022, Tannach and District Community Council received £32,000 towards upgrading Haster playpark. The playpark has been well received and was used as a venue for a fun day in June 2023, bringing families in the area together.

If you have any comments or questions regarding the Camster II Wind Farm Community Fund, please contact our community investment team: [community.investment@rwe.com](mailto:community.investment@rwe.com).

