

RWE

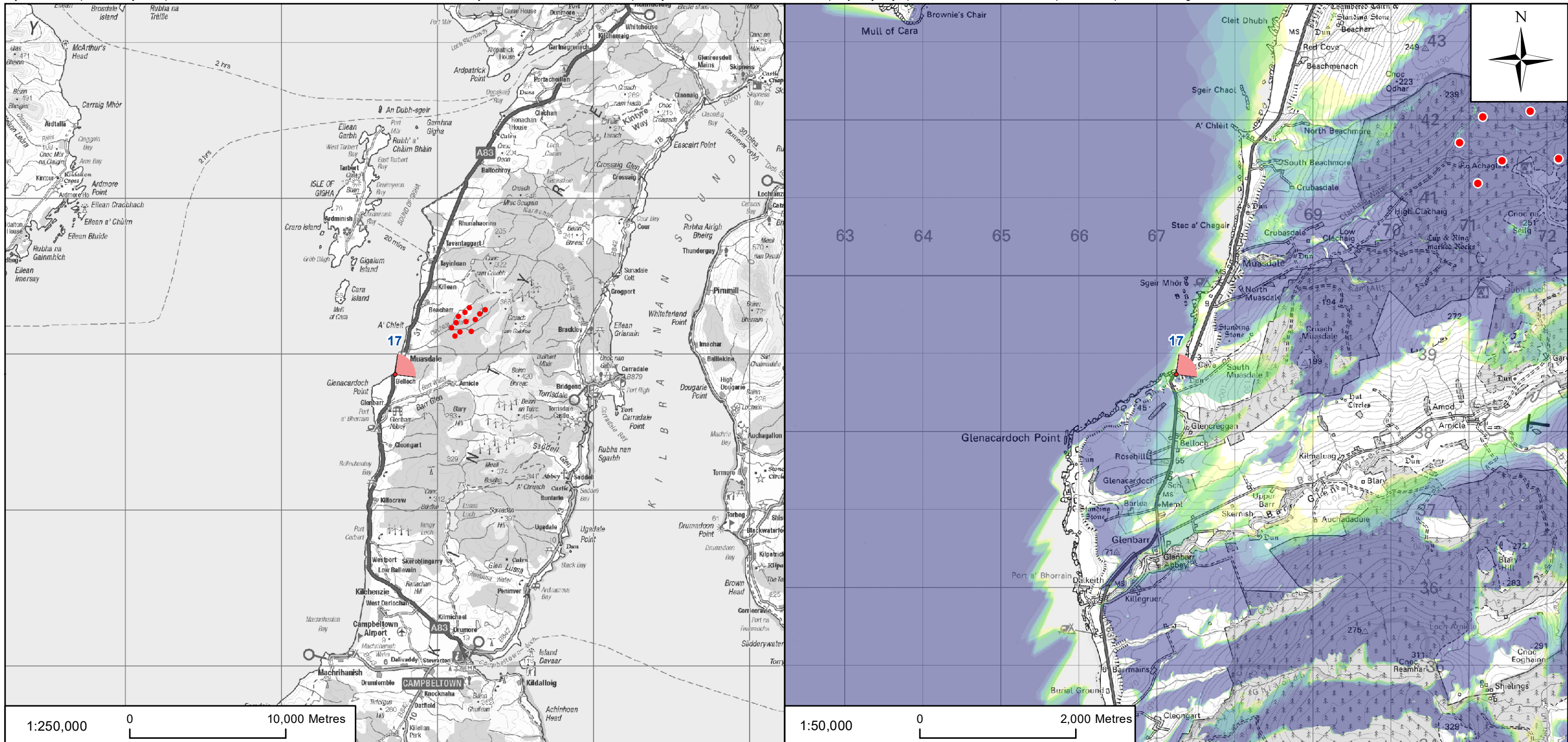
Clachaig Glen Wind Farm

Environmental Impact Assessment Report

Volume 2d

EIAR Visualisations

Figure: VP17.1



Tripod Photograph

Viewpoint 17:
From the mounded grass verge between the A83 and the BT layby. Note, there is no public vehicular access to the BT layby and therefore the viewpoint was accessed on foot from the south.

Description of Viewpoint Location

KEY:

- Proposed Turbine Location
- ▲ Viewpoint Location

Number of Turbine Tips Visible

1	5	9
2	6	10
3	7	11
4	8	12

Client: **RWE**

Project: **CLACHAIG GLEN WIND FARM ENVIRONMENTAL IMPACT ASSESSMENT**

Title: **FIGURE VP17.1 VIEWPOINT 17 - A83 SOUTH OF MUASDALE**

AECOM

One Trinity Gardens
Quayside
Newcastle, NE1 2HF

Tel +44 (0) 191 224 6500
Fax +44 (0) 191 224 6599
www.aecom.com

Drawn: LC	Checked: LC
Verified: AR	Approved: SW
Date: JANUARY 2022	Scale at A3: 1:250,000 / 1:50,000
Drawing Number: CG_220105_EI AVP17.1_v1	A3



Clachaig Glen Wind Farm

Environmental Impact Assessment Report

Volume 2d

EIAR Visualisations

Figures: VP17.2; VP17.3; VP17.4



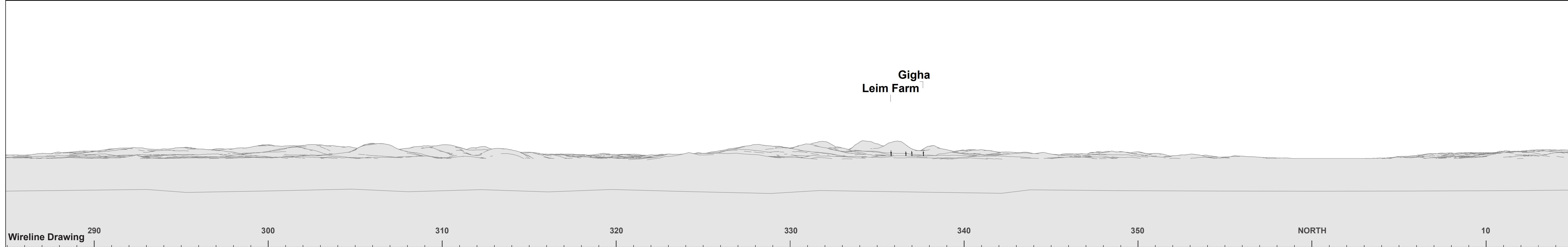


Figure VP17.2(Panel 1 of 2) - Cumulative Wireline
Viewpoint 17: A83 south of Muasdale

OS reference:	167248 E 638737 N	Horizontal field of view:	90° (cylindrical projection)	Camera:	Canon EOS 5D Mk 2
Eye Level:	18.03m AOD	Principal distance:	522 mm	Lens:	Canon 50mm (f1.8)
Direction of view:	54°	Paper size:	841 x 297 mm (half A1)	Camera height:	1.5 m AGL
Nearest turbine:	4.58 km	Correct printed image size:	820 x 130mm	Date and time:	19/09/20 14:20

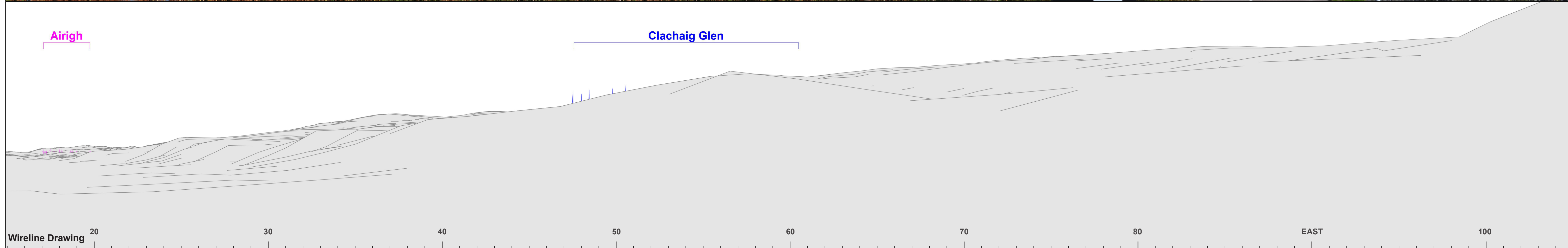
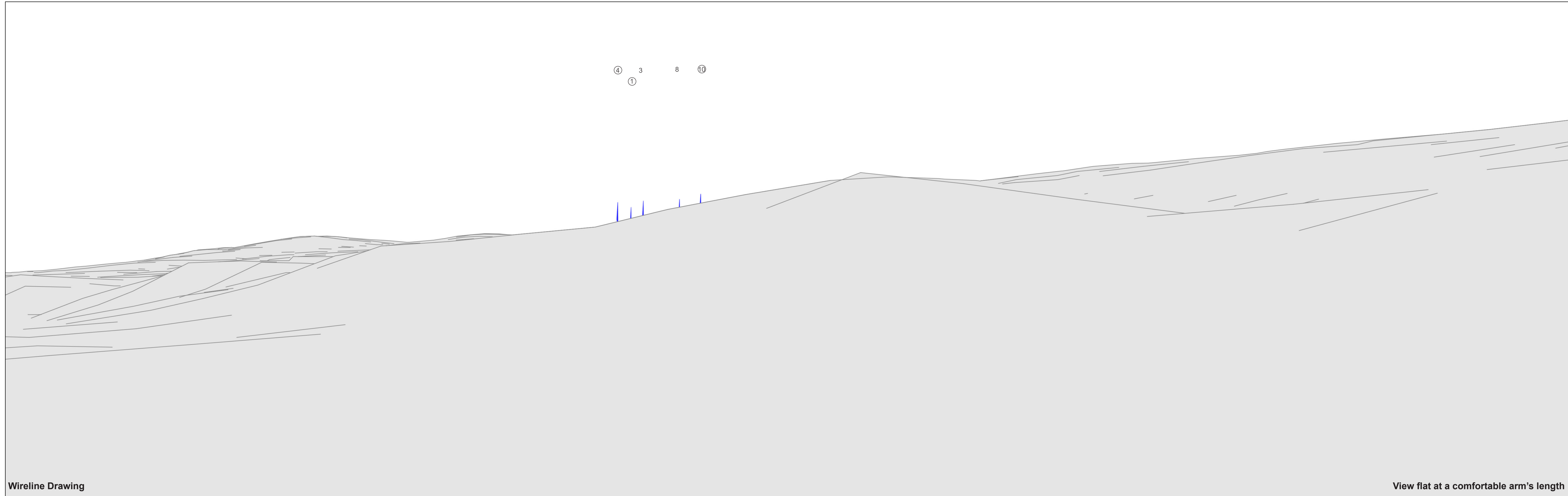


Figure VP17.2(Panel 2 of 2) - Cumulative Wireline
Viewpoint 17: A83 south of Muasdale

OS reference:	167248 E 638737 N	Horizontal field of view:	90° (cylindrical projection)	Camera:	Canon EOS 5D Mk 2
Eye Level:	18,03m AOD	Principal distance:	522 mm	Lens:	Canon 50mm (f1.8)
Direction of view:	54°	Paper size:	841 x 297 mm (half A1)	Camera height:	1.5 m AGL
Nearest turbine:	4.58 km	Correct printed image size:	820 x 130mm	Date and time:	19/09/20 14:20



Wireline Drawing

View flat at a comfortable arm's length

Figure VP17.3 - Wireline Drawing
Viewpoint 17: A83 south of Muasdale

- 3 Turbine with no aviation light
- ④ Turbine with aviation light screened by topography
- ⑦ Turbine with aviation light theoretically visible

OS reference:	167248 E 638737 N	Horizontal field of view:	53.5° (planar projection)	Camera:	Canon EOS 5D Mk 2
Eye Level:	18,03m AOD	Principal distance:	812.5 mm	Lens:	Canon 50mm (f1.8)
Direction of view:	54°	Paper size:	841 x 297 mm (half A1)	Camera height:	1.5 m AGL
Nearest turbine:	4.58 km	Correct printed image size:	820 x 260mm	Date and time:	19/09/20 14:20



Photomontage



Figure VP17.4 - Photomontage
Viewpoint 17: A83 south of Muasdale

OS reference:	167248 E 638737 N	Horizontal field of view:	53.5° (planar projection)	Camera:	Canon EOS 5D Mk 2
Eye Level:	18.03m AOD	Principal distance:	812.5 mm	Lens:	Canon 50mm (f1.8)
Direction of view:	54°	Paper size:	841 x 297 mm (half A1)	Camera height:	1.5 m AGL
Nearest turbine:	4.58 km	Correct printed image size:	820 x 260mm	Date and time:	19/09/20 14:20

RWE

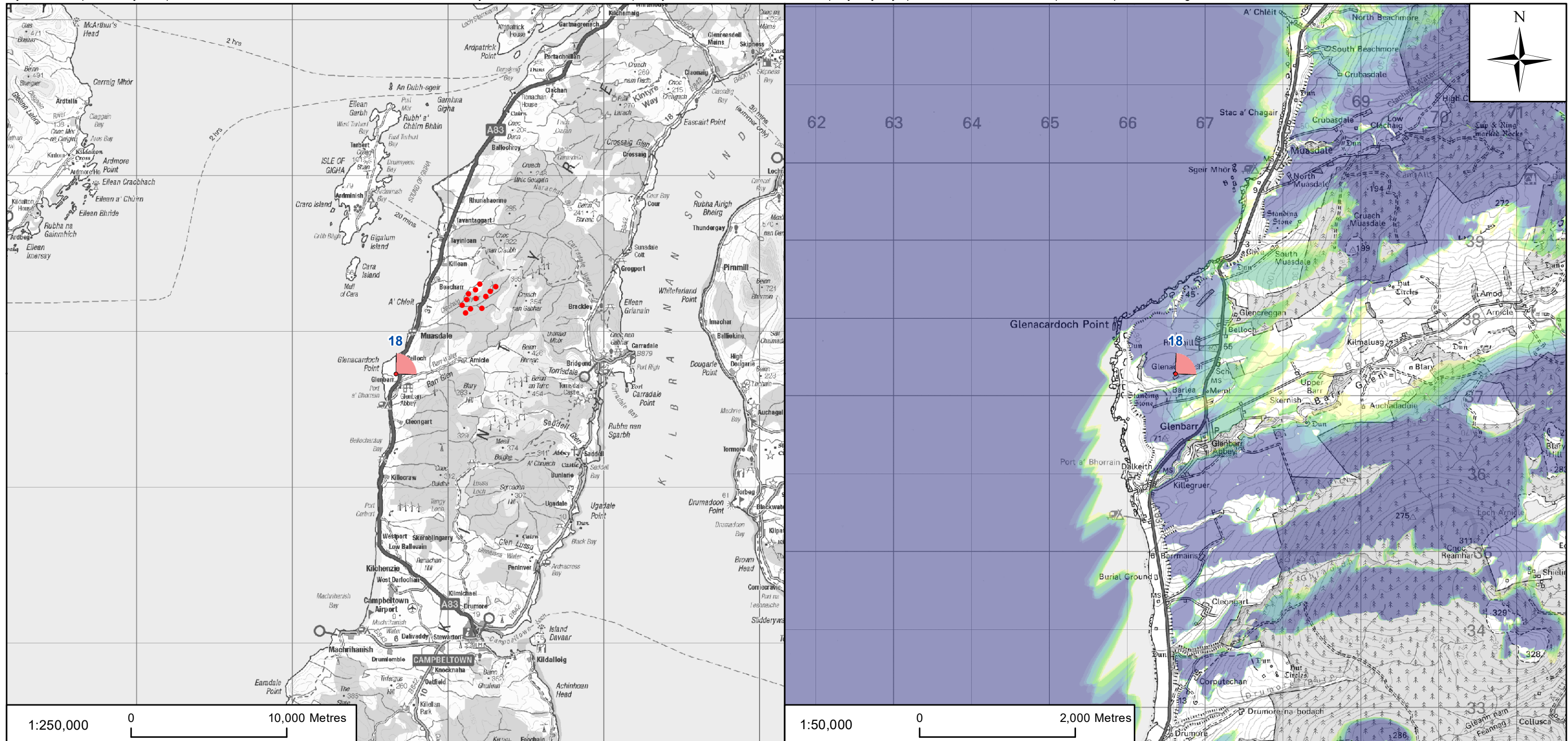
Clachaig Glen Wind Farm

Environmental Impact Assessment Report

Volume 2d

EIAR Visualisations

Figure: VP18.1



Tripod Photograph

Viewpoint 18:
To the west of the southernmost point of a short farm track extending north-west from Glenacardoch.

Description of Viewpoint Location

KEY:

- Proposed Turbine Location
- ▲ Viewpoint Location

Number of Turbine Tips Visible

1	2	3	4	5
6	7	8	9	10
11	12			

Client:	RWE
Project:	CLACHAIG GLEN WIND FARM ENVIRONMENTAL IMPACT ASSESSMENT

Title:	FIGURE VP18.1 VIEWPOINT 18 - GLENACARDOCH
--------	--

AECOM	
One Trinity Gardens Quayside Newcastle, NE1 2HF	Tel +44 (0) 191 224 6500 Fax +44 (0) 191 224 6599 www.aecom.com

Drawn:	LC	Checked:	LC
Verified:	AR	Approved:	SW
Date:	JANUARY 2022	Scale at A3:	1:250,000 / 1:50,000
Drawing Number:	CG_220105_EIAMP18.1_v1		A3



Clachaig Glen Wind Farm

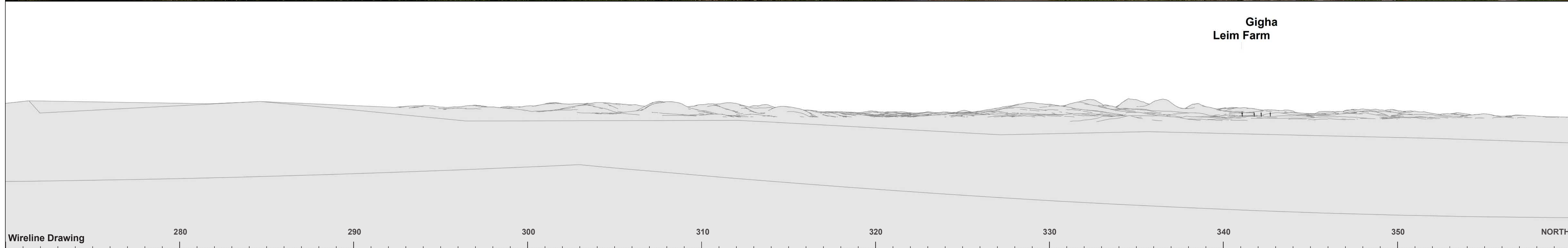
Environmental Impact Assessment Report

Volume 2d

EIAR Visualisations

**Figures: VP18.2; VP18.3;
VP18.4**





**Figure VP18.2(Panel 1 of 3) - Cumulative Wireline
Viewpoint 18: Glenacardoch**

OS reference:	166619 E 637287 N	Horizontal field of view:	90° (cylindrical projection)	Camera:	Canon EOS 5D Mk 2
Eye Level:	55.57m AOD	Principal distance:	522 mm	Lens:	Canon 50mm (f1.8)
Direction of view:	44°	Paper size:	841 x 297 mm (half A1)	Camera height:	1.5 m AGL
Nearest turbine:	5.95 km	Correct printed image size:	820 x 130mm	Date and time:	19/09/20 14:40

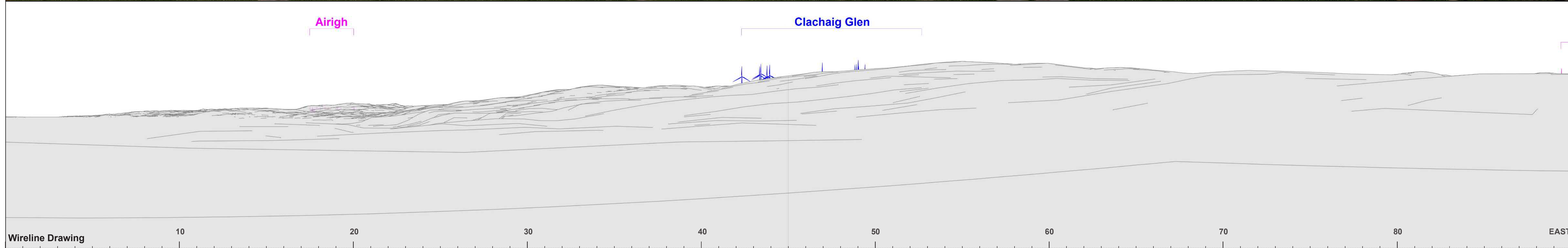


Figure VP18.2(Panel 2 of 3) - Cumulative Wireline
Viewpoint 18: Glenacardoch

OS reference:	166619 E 637287 N	Horizontal field of view:	90° (cylindrical projection)	Camera:	Canon EOS 5D Mk 2
Eye Level:	55.57m AOD	Principal distance:	522 mm	Lens:	Canon 50mm (f1.8)
Direction of view:	44°	Paper size:	841 x 297 mm (half A1)	Camera height:	1.5 m AGL
Nearest turbine:	5.95 km	Correct printed image size:	820 x 130mm	Date and time:	19/09/20 14:40

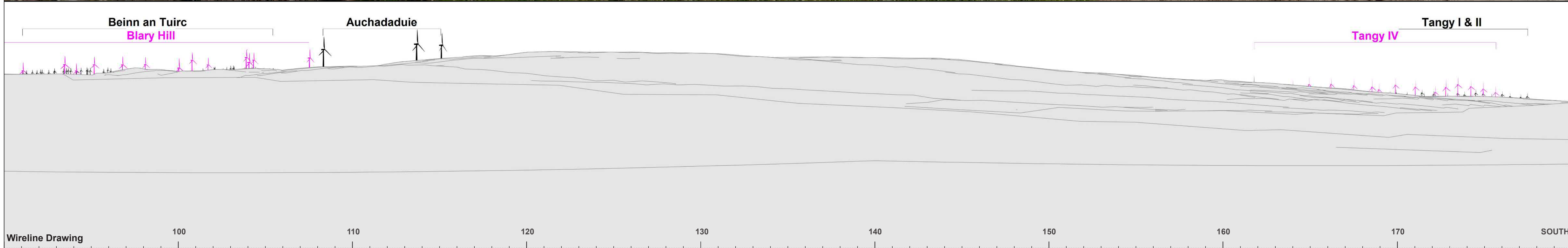


Figure VP18.2(Panel 3 of 3) - Cumulative Wireline
Viewpoint 18: Glenacardoch

OS reference:	166619 E 637287 N	Horizontal field of view:	90° (cylindrical projection)	Camera:	Canon EOS 5D Mk 2
Eye Level:	55.57m AOD	Principal distance:	522 mm	Lens:	Canon 50mm (f1.8)
Direction of view:	44°	Paper size:	841 x 297 mm (half A1)	Camera height:	1.5 m AGL
Nearest turbine:	5.95 km	Correct printed image size:	820 x 130mm	Date and time:	19/09/20 14:40

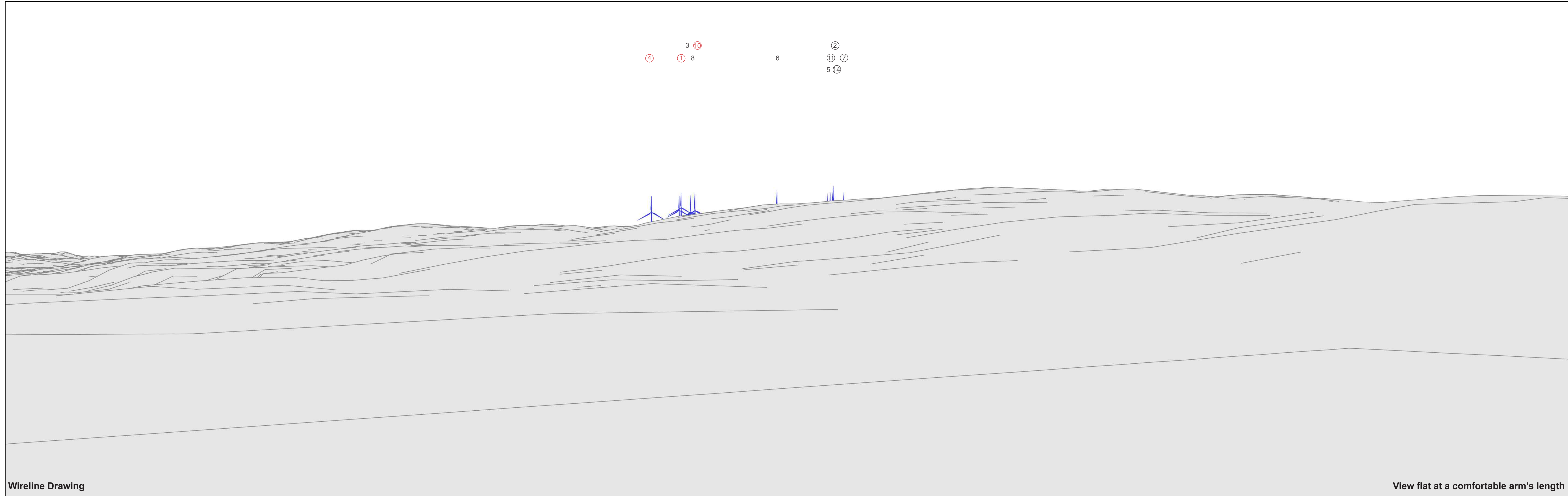


Figure VP18.3 - Wireline Drawing
Viewpoint 18: Glenacardoch

- 3 Turbine with no aviation light
- ④ Turbine with aviation light screened by topography
- ⑦ Turbine with aviation light theoretically visible

OS reference:	166619 E 637287 N	Horizontal field of view:	53.5° (planar projection)	Camera:	Canon EOS 5D Mk 2
Eye Level:	55.57m AOD	Principal distance:	812.5 mm	Lens:	Canon 50mm (f1.8)
Direction of view:	44°	Paper size:	841 x 297 mm (half A1)	Camera height:	1.5 m AGL
Nearest turbine:	5.95 km	Correct printed image size:	820 x 260mm	Date and time:	19/09/20 14:40



Photomontage

View flat at a comfortable arm's length

Figure VP18.4 - Photomontage
Viewpoint 18: Glenacardoch

OS reference:	166619 E 637287 N	Horizontal field of view:	53.5° (planar projection)	Camera:	Canon EOS 5D Mk 2
Eye Level:	55.57m AOD	Principal distance:	812.5 mm	Lens:	Canon 50mm (f1.8)
Direction of view:	44°	Paper size:	841 x 297 mm (half A1)	Camera height:	1.5 m AGL
Nearest turbine:	5.95 km	Correct printed image size:	820 x 260mm	Date and time:	19/09/20 14:40

RWE

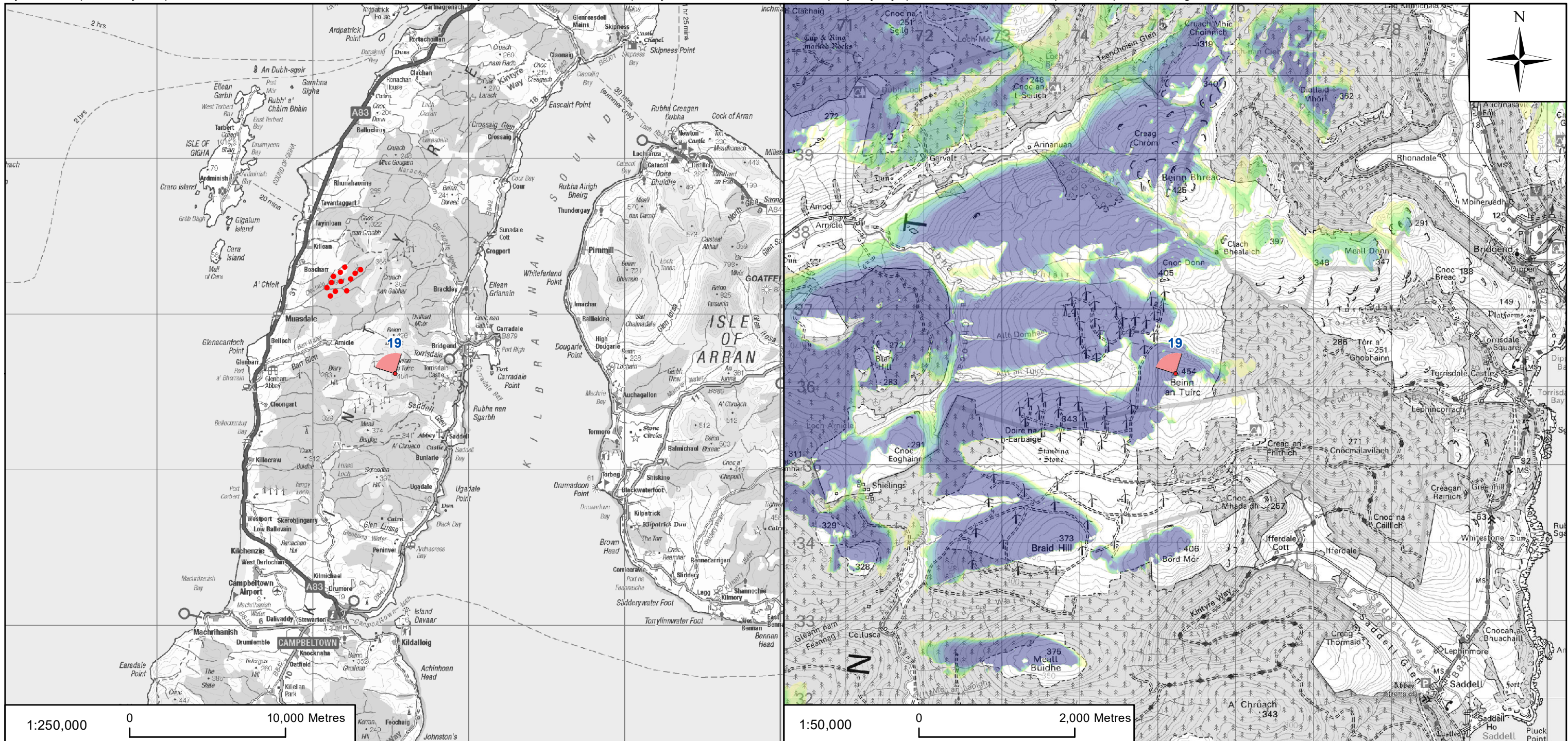
Clachaig Glen Wind Farm

Environmental Impact Assessment Report

Volume 2d

EIAR Visualisations

Figure: VP19.1



Tripod Photograph

Viewpoint 19:
From the trig point atop Beinn an Tuirc. The route taken was from the wind farm access track between the Beinn an Tuirc Extension (II) Wind Farm to the south, and Beinn and Tuirc Wind Farm to the north, striking due-east across moorland to the summit of the hill.

Description of Viewpoint Location

KEY:

- Proposed Turbine Location
- ▲ Viewpoint Location

Number of Turbine Tips Visible

1	2	3	4	5
6	7	8	9	10
11	12			

Client: **RWE**

Project: **CLACHAIG GLEN WIND FARM ENVIRONMENTAL IMPACT ASSESSMENT**

Title: **FIGURE VP19.1 VIEWPOINT 19 - BEINN AN TUIRC**

AECOM
One Trinity Gardens
Quayside
Newcastle, NE1 2HF
Tel +44 (0) 191 224 6500
Fax +44 (0) 191 224 6599
www.aecom.com

Drawn: LC	Checked: LC
Verified: AR	Approved: SW
Date: JANUARY 2022	Scale at A3: 1:250,000 / 1:50,000
Drawing Number: CG_220105_EI AVP19.1_v1	A3



Clachaig Glen Wind Farm

Environmental Impact Assessment Report

Volume 2d

EIAR Visualisations

Figure: VP19.2



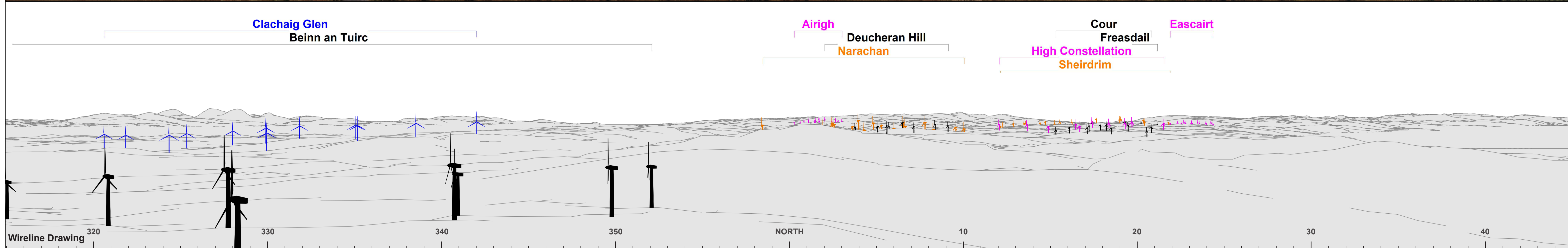


Figure VP19.2(Panel 1 of 4) - Cumulative Wireline Viewpoint 19: Beinn an Tuirc

OS reference:	175223 E 636169 N	Horizontal field of view:	90° (cylindrical projection)	Camera:	Canon EOS 5D Mk 2
Eye Level:	454.9m AOD	Principal distance:	522 mm	Lens:	Canon 50mm (f1.4)
Direction of view:	331°	Paper size:	841 x 297 mm (half A1)	Camera height:	1.5 m AGL
Nearest turbine:	6.15 km	Correct printed image size:	820 x 130mm	Date and time:	19/09/20 17:15

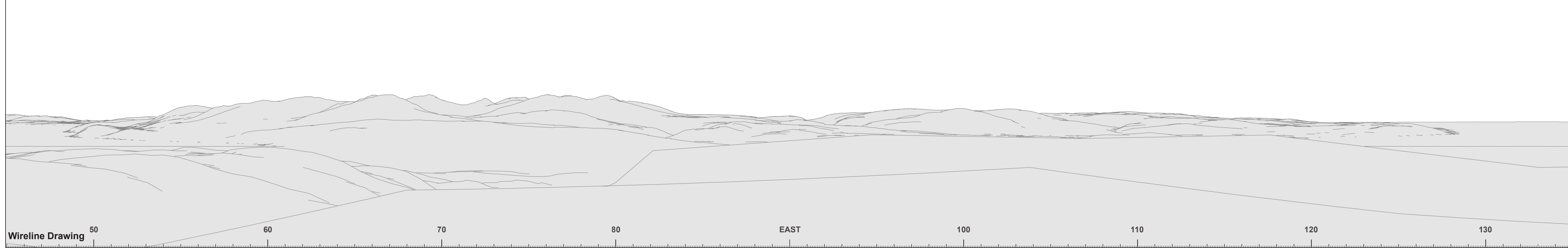


Figure VP19.2(Panel 2 of 4) - Cumulative Wireline
Viewpoint 19: Beinn an Tuirc

OS reference:	175223 E 636169 N	Horizontal field of view:	90° (cylindrical projection)	Camera:	Canon EOS 5D Mk 2
Eye Level:	454.9m AOD	Principal distance:	522 mm	Lens:	Canon 50mm (f1.4)
Direction of view:	331°	Paper size:	841 x 297 mm (half A1)	Camera height:	1.5 m AGL
Nearest turbine:	6.15 km	Correct printed image size:	820 x 130mm	Date and time:	19/09/20 17:15

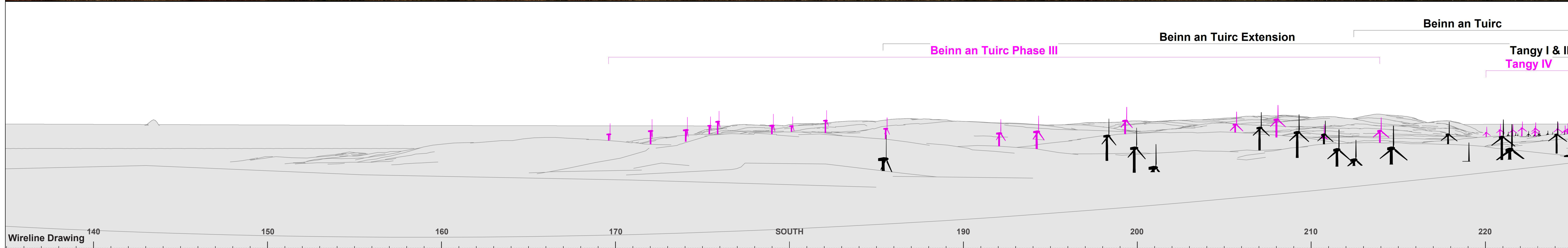


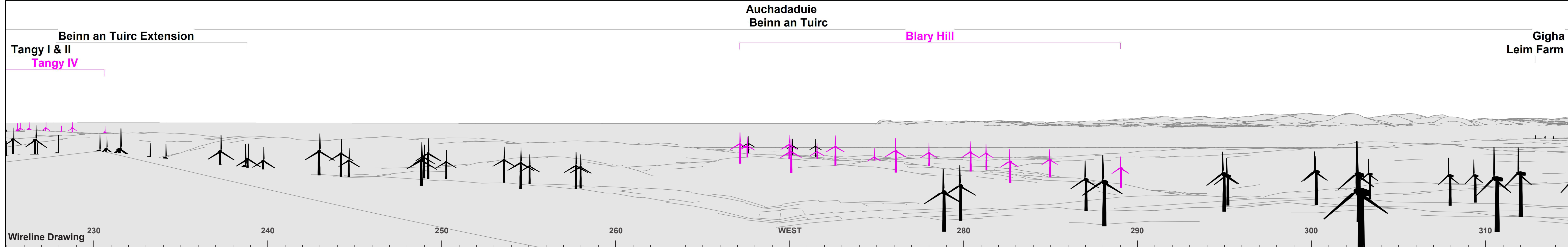
Figure VP19.2(Panel 3 of 4) - Cumulative Wireline
Viewpoint 19: Beinn an Tuirc

OS reference:	175223 E 636169 N	Horizontal field of view:	90° (cylindrical projection)	Camera:	Canon EOS 5D Mk 2
Eye Level:	454.9m AOD	Principal distance:	522 mm	Lens:	Canon 50mm (f1.4)
Direction of view:	331°	Paper size:	841 x 297 mm (half A1)	Camera height:	1.5 m AGL
Nearest turbine:	6.15 km	Correct printed image size:	820 x 130mm	Date and time:	19/09/20 17:15



Baseline Photograph

This image provides landscape and visual context only



Wireline Drawing

Figure VP19.2(Panel 4 of 4) - Cumulative Wireline Viewpoint 19: Beinn an Tuirc

OS reference:	175223 E 636169 N	Horizontal field of view:	90° (cylindrical projection)	Camera:	Canon EOS 5D Mk 2
Eye Level:	454.9m AOD	Principal distance:	522 mm	Lens:	Canon 50mm (f1.4)
Direction of view:	331°	Paper size:	841 x 297 mm (half A1)	Camera height:	1.5 m AGL
Nearest turbine:	6.15 km	Correct printed image size:	820 x 130mm	Date and time:	19/09/20 17:15



Clachaig Glen Wind Farm

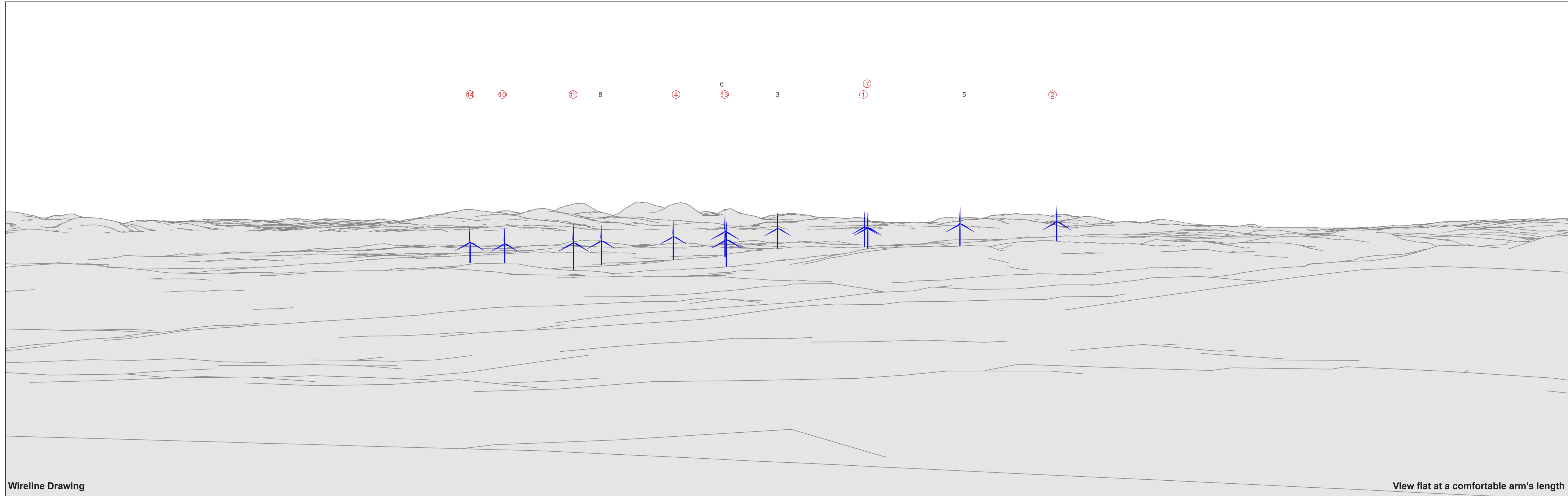
Environmental Impact Assessment Report

Volume 2d

EIAR Visualisations

Figures: VP19.3; VP19.4





Wireline Drawing

View flat at a comfortable arm's length

Figure VP19.3 - Wireline Drawing
Viewpoint 19: Beinn an Tuirc

- 3 Turbine with no aviation light
- ④ Turbine with aviation light screened by topography
- ⑦ Turbine with aviation light theoretically visible

OS reference:	175223 E 636169 N	Horizontal field of view:	53.5° (planar projection)	Camera:	Canon EOS 5D Mk 2
Eye Level:	454.9m AOD	Principal distance:	812.5 mm	Lens:	Canon 50mm (f1.4)
Direction of view:	331°	Paper size:	841 x 297 mm (half A1)	Camera height:	1.5 m AGL
Nearest turbine:	6.15 km	Correct printed image size:	820 x 260mm	Date and time:	19/09/20 17:15



Photomontage

View flat at a comfortable arm's length

Figure VP19.4 - Photomontage
Viewpoint 19: Beinn an Tuirc

OS reference:	175223 E 636169 N	Horizontal field of view:	53.5° (planar projection)	Camera:	Canon EOS 5D Mk 2
Eye Level:	454.9m AOD	Principal distance:	812.5 mm	Lens:	Canon 50mm (f1.4)
Direction of view:	331°	Paper size:	841 x 297 mm (half A1)	Camera height:	1.5 m AGL
Nearest turbine:	6.15 km	Correct printed image size:	820 x 260mm	Date and time:	19/09/20 17:15

RWE

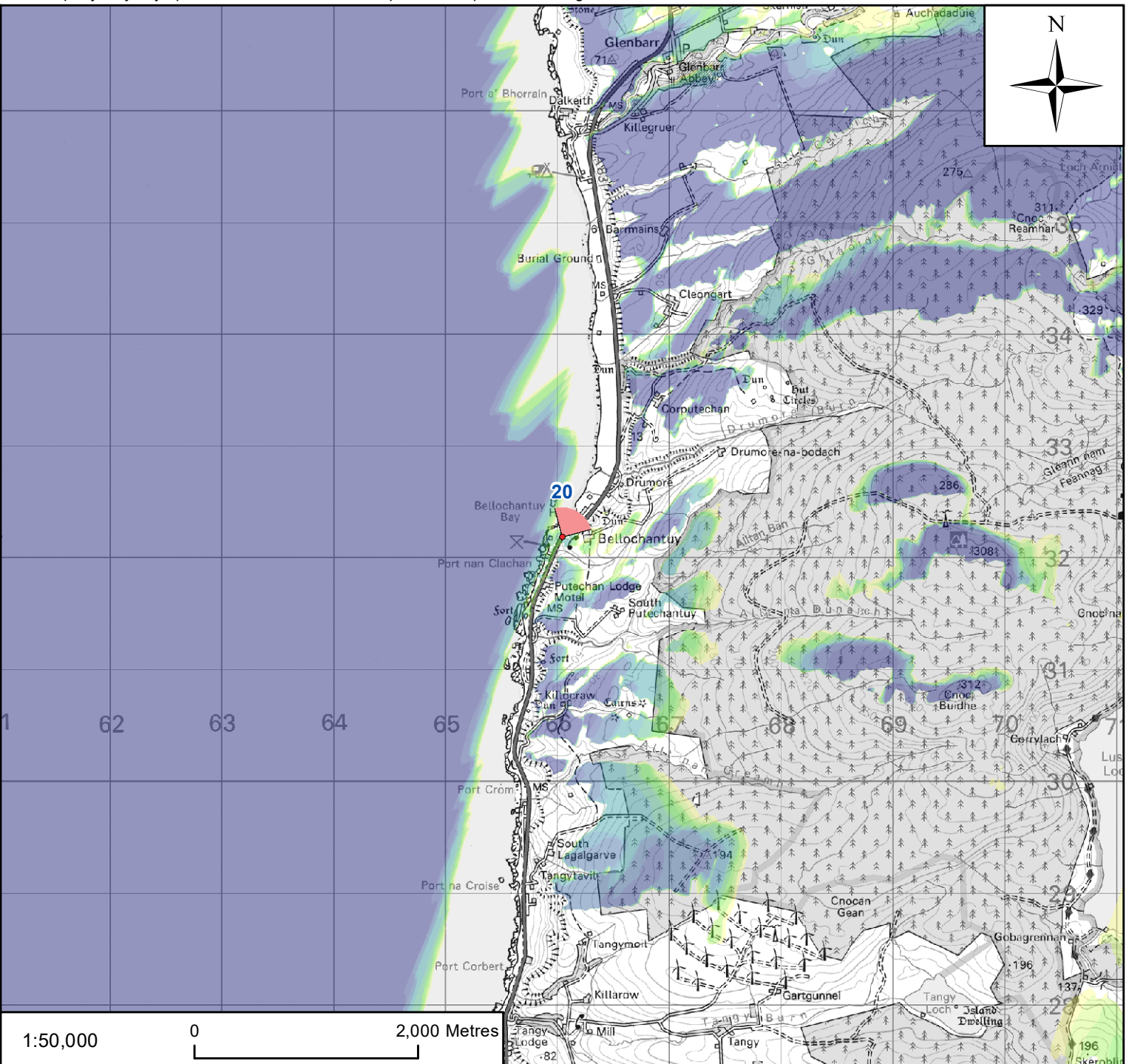
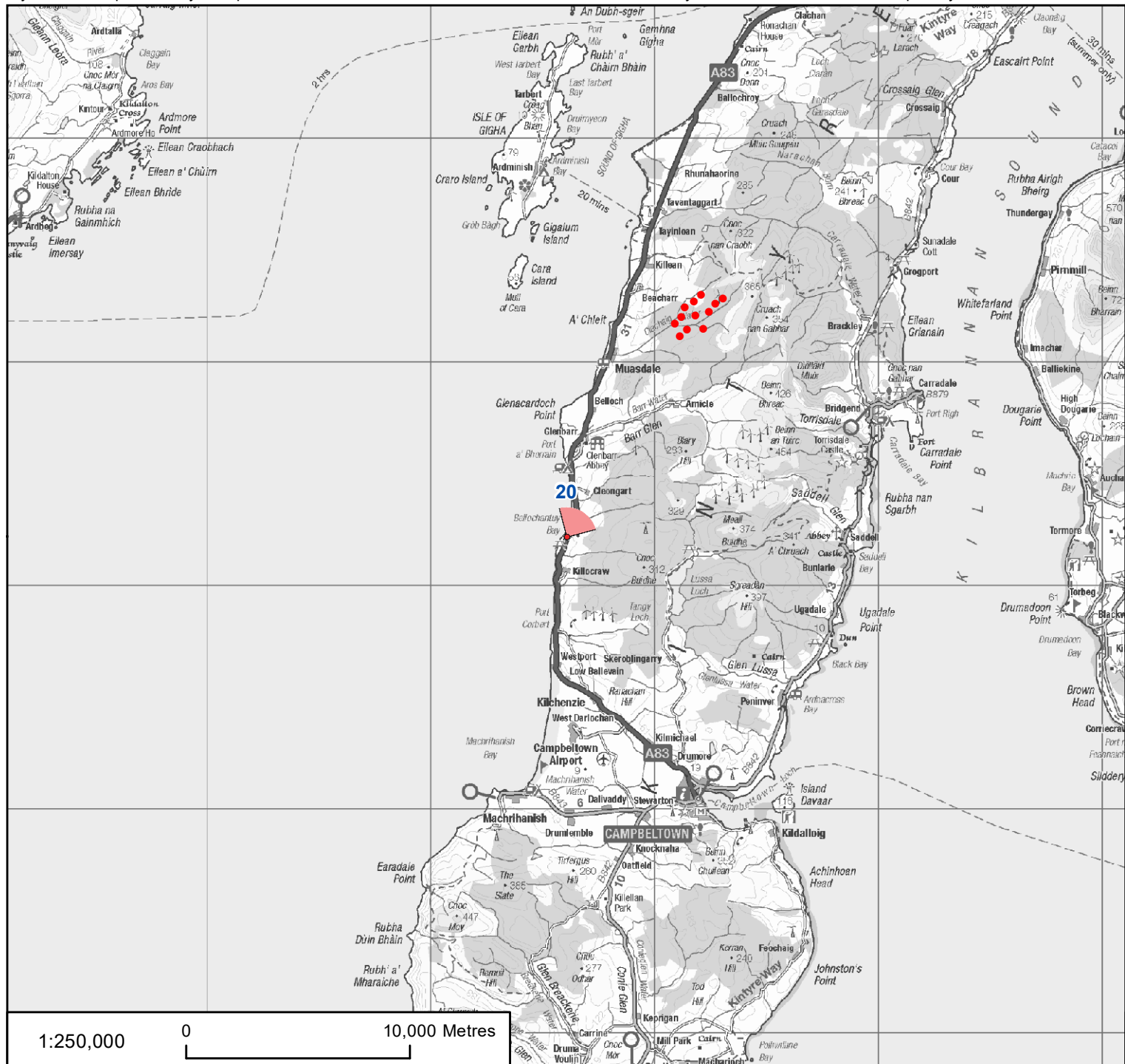
Clachaig Glen Wind Farm

Environmental Impact Assessment Report

Volume 2d

EIAR Visualisations

Figure: VP20.1



Tripod Photograph

Viewpoint 20:
From a footpath adjacent to the north-bound carriageway of the A83, Bellochantuy.

Description of Viewpoint Location

KEY:

- Proposed Turbine Location
- ▲ Viewpoint Location

Number of Turbine Tips Visible

1	5	9
2	6	10
3	7	11
4	8	12

Client: **RWE**

Project: CLACHAIG GLEN WIND FARM ENVIRONMENTAL IMPACT ASSESSMENT

Title: **FIGURE VP20.1 VIEWPOINT 20 - A83 NEAR BELLOCHANTUY**

AECOM

One Trinity Gardens
Quayside
Newcastle, NE1 2HF

Tel +44 (0) 191 224 6500
Fax +44 (0) 191 224 6599
www.aecom.com

Drawn: LC	Checked: LC
Verified: AR	Approved: SW
Date: JANUARY 2022	Scale at A3: 1:250,000 / 1:50,000
Drawing Number: CG_220105_EI AVP20.1_v1	A3



Clachaig Glen Wind Farm

Environmental Impact Assessment Report

Volume 2d

EIAR Visualisations

**Figures: VP20.2; VP20.3;
VP20.4**



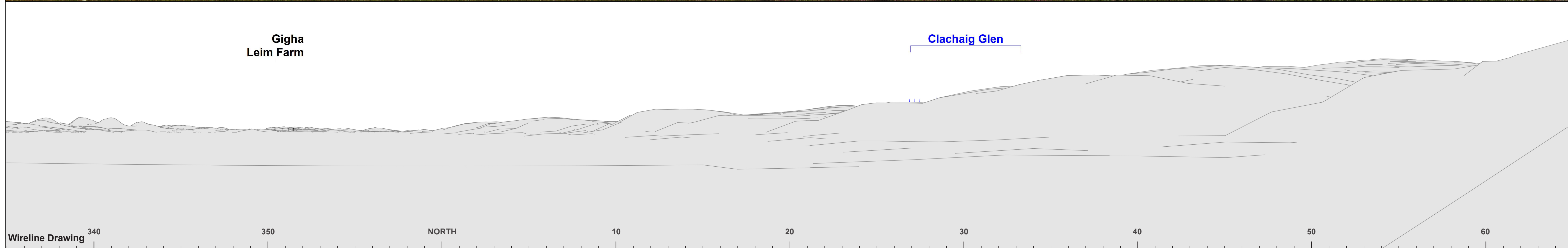


Figure VP20.2 - Cumulative Wireline Viewpoint 20: A83 near Bellochantuy

OS reference:	166040 E 632191 N	Horizontal field of view:	90° (cylindrical projection)	Camera:	Canon EOS 5D Mk 2
Eye Level:	14.7m AOD	Principal distance:	522 mm	Lens:	Canon 50mm (f1.8)
Direction of view:	30°	Paper size:	841 x 297 mm (half A1)	Camera height:	1.5 m AGL
Nearest turbine:	10.34 km	Correct printed image size:	820 x 130mm	Date and time:	09/07/14 10:13

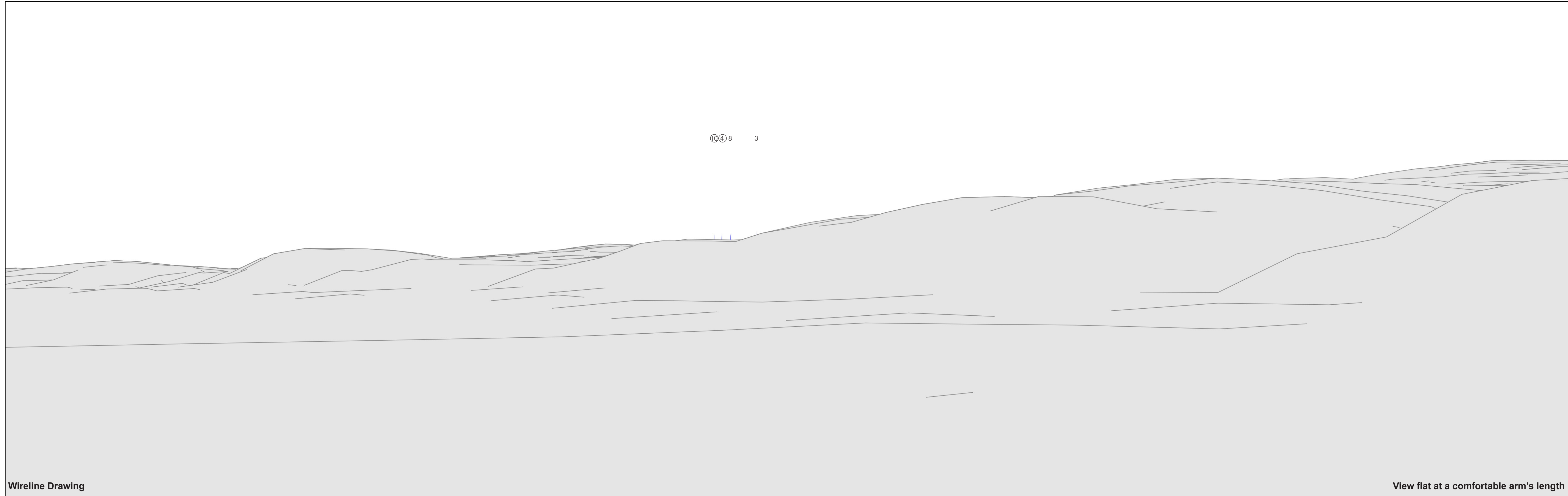


Figure VP20.3 - Wireline Drawing
Viewpoint 20: A83 near Bellochautuy

- 3 Turbine with no aviation light
- ④ Turbine with aviation light screened by topography
- ⑦ Turbine with aviation light theoretically visible

OS reference:	166040 E 632191 N	Horizontal field of view:	53.5° (planar projection)	Camera:	Canon EOS 5D Mk 2
Eye Level:	14.7m AOD	Principal distance:	812.5 mm	Lens:	Canon 50mm (f1.8)
Direction of view:	30°	Paper size:	841 x 297 mm (half A1)	Camera height:	1.5 m AGL
Nearest turbine:	10.34 km	Correct printed image size:	820 x 260mm	Date and time:	09/07/14 10:13



Photomontage

View flat at a comfortable arm's length

Figure VP20.4 - Photomontage
Viewpoint 20: A83 near Bellochantuy

OS reference:	166040 E 632191 N	Horizontal field of view:	53.5° (planar projection)	Camera:	Canon EOS 5D Mk 2
Eye Level:	14.7m AOD	Principal distance:	812.5 mm	Lens:	Canon 50mm (f1.8)
Direction of view:	30°	Paper size:	841 x 297 mm (half A1)	Camera height:	1.5 m AGL
Nearest turbine:	10.34 km	Correct printed image size:	820 x 260mm	Date and time:	09/07/14 10:13

