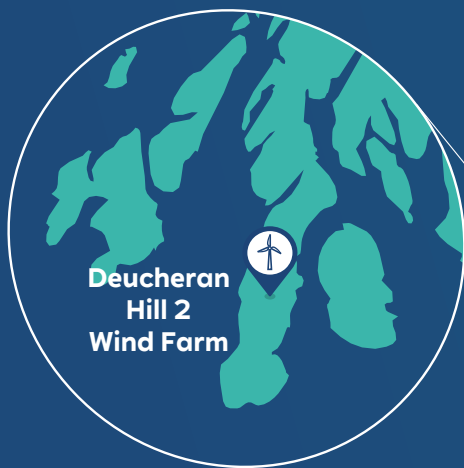


RWE

Deucheran Hill 2 Wind Farm



Scotland

Our design journey



Rosehall Wind Farm


Thank you for attending this consultation for our Deucheran Hill 2 Wind Farm. There are a number of staff on hand who will be happy to talk you through any of the material and answer any questions that you may have.


RWE have operated the existing Deucheran Hill Wind Farm at this location since 2001. Deucheran Hill 2 Wind Farm will form a repowering and extension of this site, replacing the older turbines as they come to the end of their operational lifetime.

Since our first public consultation event we have incorporated feedback and can now show a revised design. It is essential that the local community and other stakeholders are given the opportunity to view the proposal and, importantly, feedback their views.

After further design inputs we have revised our design for the Wind Farm. This has resulted in a reduction in the number of turbines from 23 to 14.

 **14**
Number of turbines
Initially 23 turbines

 **180-220m**
Maximum blade tip height
3 up to 220m, 4 up to 200m & 7 up to 180m

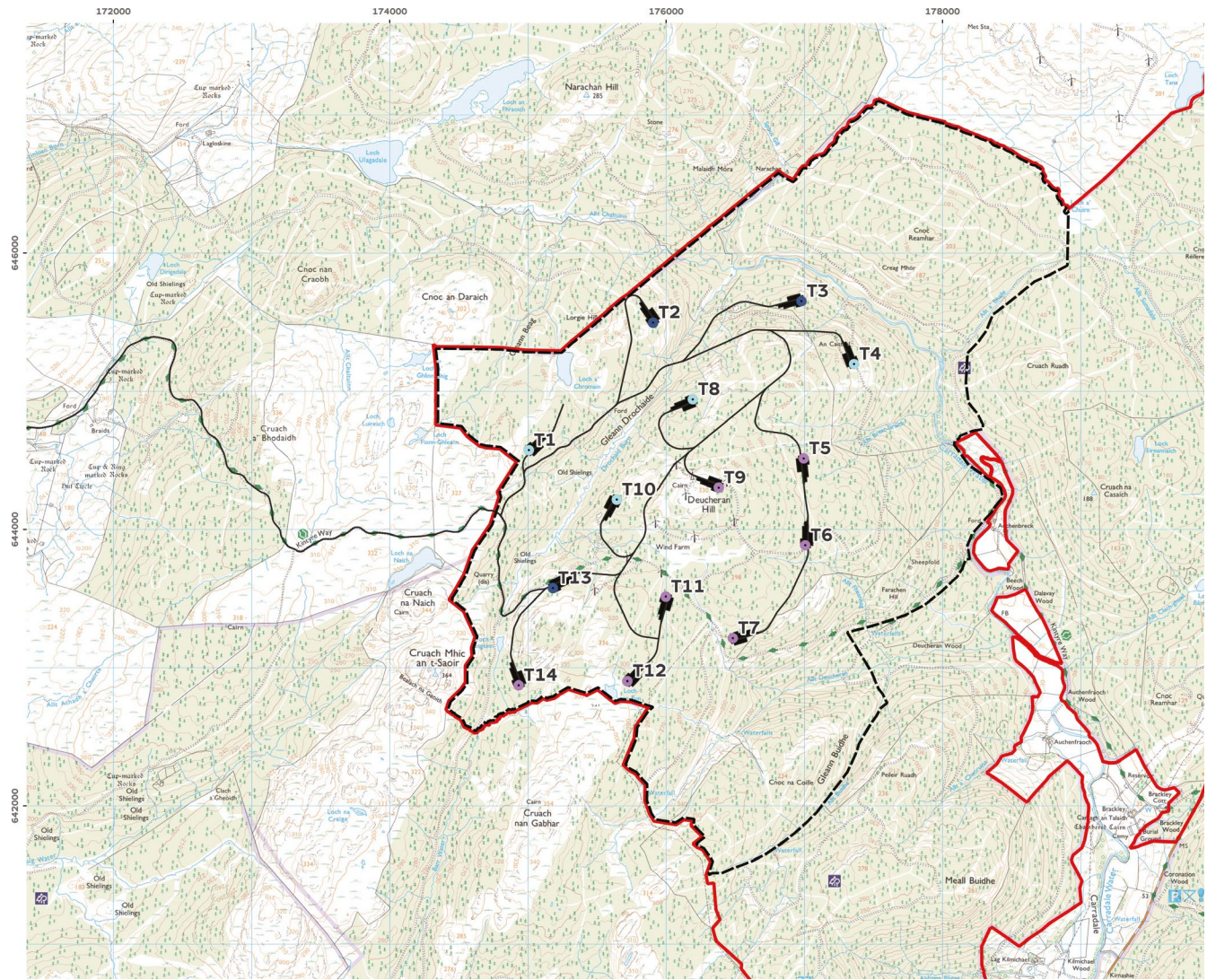
 **Up to 94.2 MW**
Installed capacity


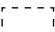

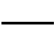



 **Up to 88,000**
Homes powered*

 **Up to £462,00**
Annual support for local communities**

* Based on average household electricity consumption of 3,509kWh source (Ofgem)
** Based on Scottish Government Guidance of £5,000/installed MW/Annum

Deucheran Hill 2 Wind Farm

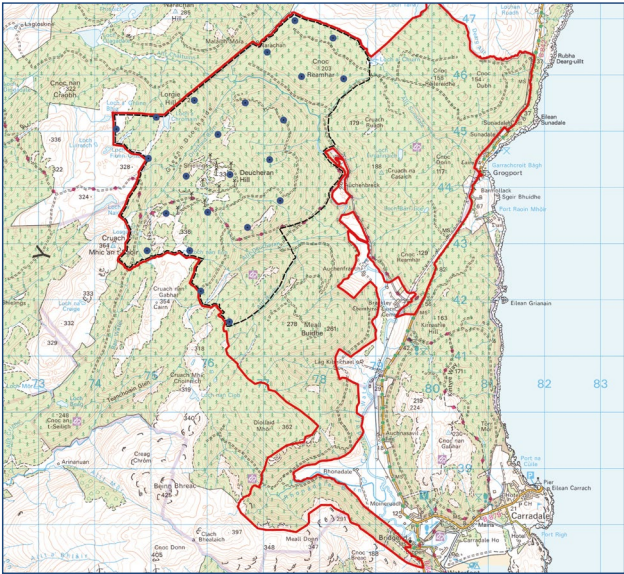


-  Site Boundary
-  Turbine Area
-  Hardstands
-  Access Track
-  Proposed Turbines 220m to Tip
-  Proposed Turbines 200m to Tip
-  Proposed Turbines 180m to Tip



Design evolution

Scoping & exhibition layout 2024:
23 turbines up to 220m blade tip height.



Site Boundary
Turbine Area
● 23 Turbines - Up to 220m

Current layout:
14 turbines - 3 up to 220m, 4 up to 200m and 7 up to 180m blade tip height plus battery storage.



Site Boundary
Turbine Area
● 3 Turbines - Up to 220m
● 4 Turbines - Up to 200m
● 7 Turbines - Up to 180m

Since the first public exhibition in June and October 2024, there have been some key changes to the site.

The key design drivers have been results of:

- Environmental surveys – primarily peat depth and condition surveys, and ornithology and ecology surveys.
- Landscape assessments including consultation with key statutory consultees.
- Feedback from local residents and residents on Arran.
- The wind resource data we have collected.

Key changes to design are as follows:

- The new proposal reduces turbine numbers from 23 to 14 and lowers tip heights. Of the 14 turbines, 3 remain at 220m, 4 have been reduced to 200m and 7 reduced to 180m tip height. The changes aim to create a more compact layout and reduce visual impact, particularly from the east side of Kintyre and longer views from Arran.
- Positioned turbines to avoid areas of deeper peat and steep slopes.
- Maximised the potential available wind resource by spacing turbines with regard to prevailing wind direction and terrain impacts.
- Other site constraints considered in the layout included ecological constraints, proximity to watercourses and other sensitive areas.

Battery storage



We are planning to install co-located battery storage on site.

With the increase of renewables being deployed, greater flexibility is required within the electrical system to manage fluctuating supply and demand. Energy storage can provide this necessary flexibility, while also providing additional services that facilitate the safe and efficient operation of the grid.

It is expected that Lithium-ion batteries will be installed. This battery technology is well suited for short-duration energy supply due to the speed at which they can be charged and discharged when required.

 **100 MW / 400 MWh**
Installed capacity (4 hours)

 **~ 186m x 79m**
Footprint

 **Lithium-ion**
Batteries

 **~ 128 x 20ft**
Battery containers

 **~ 32 x 20ft**
Inverter containers

How the wind farm could look

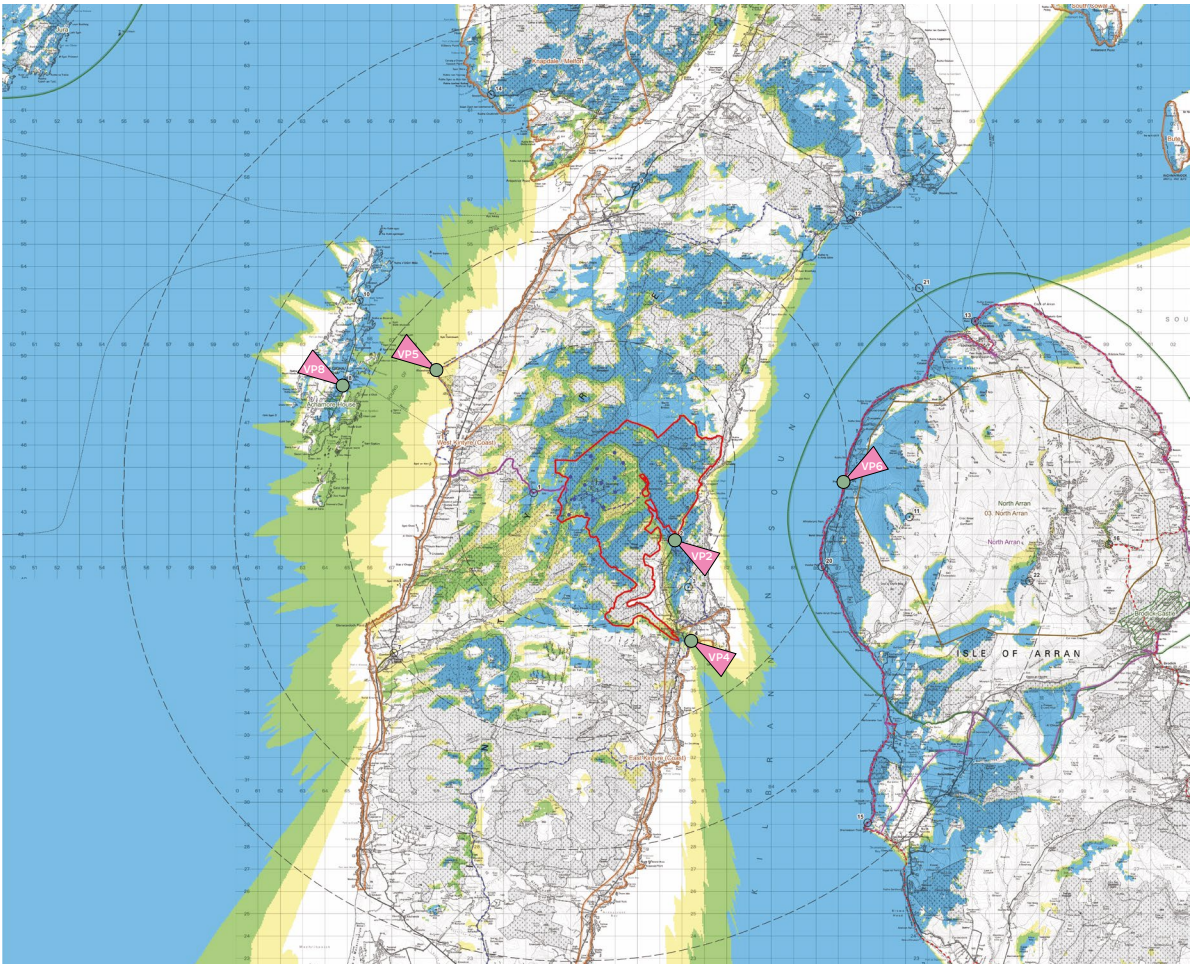
Our proposal is for 14 turbines with a total generating capacity of up to 92.4 MW plus battery storage.

At this exhibition we are displaying a number of representative visualisations from the surrounding area. These include:

- VP2 B842 Road
- VP4 Carradale Bay
- VP5 Kintyre Way (West Kintyre)
- VP6 Pirnmill (Isle of Arran)
- VP8 Ardminish

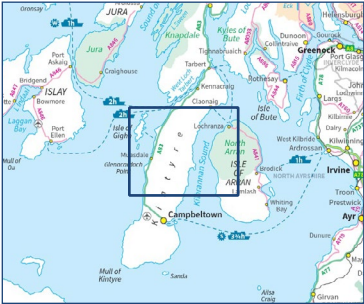
The planning application itself will include visualisations from a wider geographical area and will include a selection of night-time visuals.

The ZTV (Zone of Theoretical Visibility) presented here shows where the wind farm could be seen, assuming a landscape without any surface features (for example it does not take into account any natural or built elements like trees or buildings) which can limit how much of the wind farm is actually visible.



- Site Boundary
- Access Track
- Distance Radii (5, 10, 15 & 20km)
- Proposed Turbines 180 - 220m to Tip
- Viewpoints

- Number of turbines theoretically visible to tip height
- 1 - 5
 - 6 - 10
 - 11 - 14



Wind farm viewpoints





Bringing the turbines to site

We've shown the delivery route on this map.

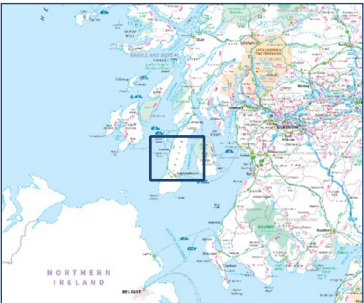
We propose to ship the wind turbines into Campbeltown Port and then transport them by road northbound along the A83.

We'd also like your feedback on the timing of turbine deliveries and speed restrictions on heavy goods vehicles near the wind farm site.

This will allow us to create a traffic management plan that addresses concerns and minimises the potential impact on the local community.



-  Site Boundary
-  Turbine Area
-  Turbine Delivery Route from Campbeltown



Project timeline Deucheran Hill 2



What happens next?

In the coming months we'll be finishing off our environmental assessments. The results will then be presented in the form of a planning application which will be submitted to the Energy Consents Unit (ECU).

You can find out more information on the ECU planning portal using reference **ECU00005208** or by searching **Deucheran Hill 2**.

Have your say



Thank you for taking the time to view the Deucheran Hill 2 proposal. You can provide feedback using the following:



Complete a feedback form (via post or online):

**RWE, Ground Floor
Earn House, Broxden Business Park
Perth, PH1 1RA**



If you wish to contact a member of the Deucheran Hill 2 Wind Farm team you can email us at:

deucheranhill2@rwe.com

An online copy of this exhibition can be found at:

rwe.com/deucheranhill2

Please note that feedback forms should be returned no later than **18th July 2025**.

Receiving comments at this stage helps us further refine our plans and take into account any key issues that arise locally.

Please note that any comments made to RWE are not representations to the consenting authority. Once RWE submits a Section 36 application, there will be an opportunity to make such representations on that application to the Scottish Government Energy Consents Unit.





rwe.com/deucheranhill2