

Keeping you informed

Dogger Bank South Offshore Wind Farms Community Newsletter

Welcome

DBS moves to the next stage

It's been a busy period for the Dogger Bank South (DBS) offshore wind farms team since the Development Consent Order was accepted for examination in July 2024.

In this edition of the DBS newsletter, we provide an update on progress towards the start of the DCO examination and share news about potential design changes that would reduce the number of offshore platforms required and shrink the footprint of the proposed two onshore converter stations.

We also review our East Coast Offshore Wind Supplier Engagement Day that took place in September and take a look at RWE's latest intake of apprentices embarking on a career in offshore wind.

We are also pleased to show you some of the evidence uncovered from the onshore archaeological evaluation activities which have now concluded.

If you have any questions about the DBS projects, then please do get in touch with the team by email: dbs@rwe.com, phone: 0800 254 5459 or by post at FREEPOST DBSOWF.



Colin McAllister
Development
Project Manager



Rassim Hariz
Project Director

Fast facts

DBS offshore wind farms



DBS is two projects:

- DBS East
- DBS West

Located over 100km off the northeast coast of England.



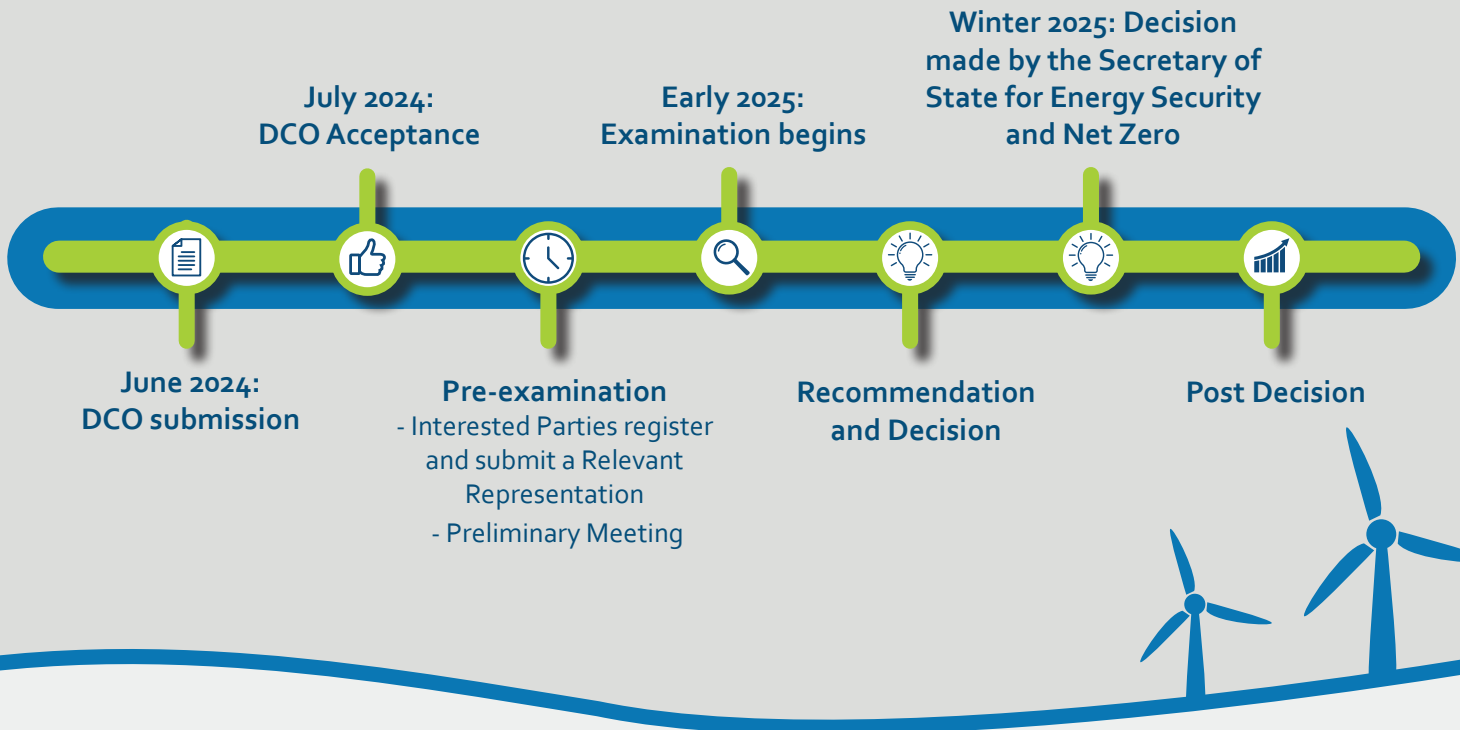
Combined capacity of 3GW



Enough electricity for around 3 million typical UK homes

*Calculation based on 2021 generation, and assuming average (mean) annual household consumption of 3,509 kWh, based on latest statistics from Department of Energy Security and Net Zero (Subnational Electricity and Gas Consumption Statistics Regional and Local Authority, Great Britain, 2021, Mean domestic electricity consumption (kWh per meter) by country/region, Great Britain, 2021).

Timeline showing DCO application process



Development Consent Order: update

The Planning Inspectorate accepted our application for examination of the DBS projects in July 2024. Between 26 July and 06 September 2024, during the pre-examination phase, a total of 67 stakeholders including members of the public, organisations and companies registered their interest in participating in the examination phase.

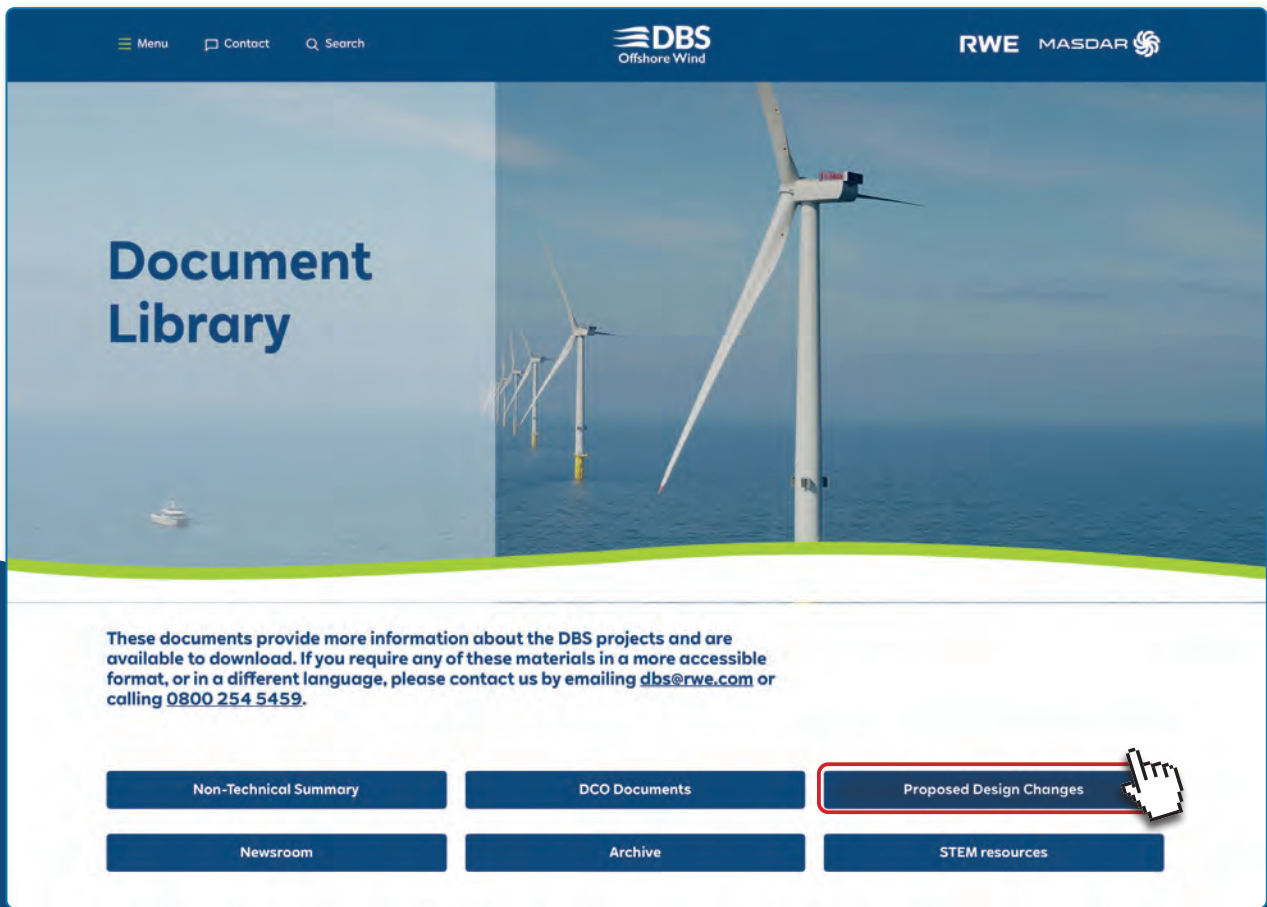
On 24 September 2024, the Planning Inspectorate issued a letter naming 22 and 23 October 2024 as dates for an online Preliminary Meeting and two initial subject-specific hearings to look in detail at key points raised by stakeholders during pre-examination.

On 22 October, however, the Preliminary Meeting was adjourned in response to a request from the Examining Authority for additional information, primarily about offshore birds, and the subsequent hearings were temporarily

postponed. The requested information has now been supplied and we are awaiting a new date to conclude the Preliminary Meeting and to start the examination and its associated hearings. We anticipate that this will be early in 2025. Once we are notified of the new dates, we will publish them on the website and on posters locally. Interested parties will be informed of the new hearing dates directly by the Planning Inspectorate.

If you would like information or want to know how to get involved, please visit the **Planning Inspectorate website** where you can also view all the DBS application documents and register to be kept up to date throughout the examination process.

<https://national-infrastructure-consenting.planninginspectorate.gov.uk/projects/ENo10125>



Proposed design changes

We have continued to develop the project since submission and are now in a position to consult on proposed design changes to both the onshore and offshore infrastructure.

These design changes have been made possible so early in the projects' development by combining feedback received from stakeholders around the time of the Development Consent Order submission with a firm grid connection offer. With this more detailed information, the team has developed a design that includes a reduction in the footprint of the two proposed onshore converter stations by 50% and a reduction and even removal of aspects of the proposed offshore infrastructure, taking the number of offshore platforms from eight down to three.

The changes are broadly beneficial, however, they are not significant enough to alter the outcomes of the offshore environmental assessments, except in one case where the impact has been reduced. The effects detailed in the Environmental Statement submitted with the original application, therefore, remain largely unchanged.

Following guidance from the Examining Authority, a non-statutory consultation relating to these changes is taking place between 15 November 00:00 and 16 December 23:59. This has been advertised locally on posters and on the website, and stakeholders with an interest in the proposed changes have been contacted directly for their views.

Detailed information about all the proposed changes can be found on the DBS website in the document library.

www.doggerbanksouth.co.uk/document-library

If you have any comments about the proposed changes, please share them with us by 16 December 2024 at 23:59 either by email to dbs@rwe.com or by post to FREEPOST DBSOWF.

We will evaluate all the feedback we receive before submitting formal Requests for Change to the Examining Authority in early January 2025.



Supplier Engagement Day

RWE runs a Supplier Transparency Engagement Programme (STEP), to enable RWE and its tier one suppliers to work ever closer with the broader supplier network, particularly in the UK.

In September 2024, the DBS projects were showcased, alongside other offshore wind projects either under construction or in operation off the east coast, at an East Coast STEP Supplier Engagement Day which was attended by over 200 suppliers.

RWE, supported by a selection of tier one suppliers, delivered presentations, chaired round table discussions, held 1-2-1 meetings and enabled extensive networking between attendees to facilitate deeper understanding about the projects, share upcoming opportunities with suppliers and enable RWE and its supporting tier one suppliers to learn about the skills, goods and services available locally.

It may seem premature to be considering the supply chain given DBS is at such an early stage of development, but early engagement helps local businesses understand the requirements of the projects and to prepare so that they are well placed to tender for contracts with RWE and our tier one suppliers in the future.

As the DBS projects progress, we will continue to engage with businesses that work with and employ local people to make them aware of the opportunities available so that they are prepared to bid for contracts related to the projects.

Tier one suppliers

Tier one suppliers contract directly with us to supply a bespoke part of the wind farm e.g. the wind turbines, the export cables or the turbine foundations.

Tier one suppliers often require a range of local businesses to support the delivery and installation of their product or service.

Opportunities for UK businesses are extensive and maximising awareness of these is key throughout the various phases of development, construction and operation.

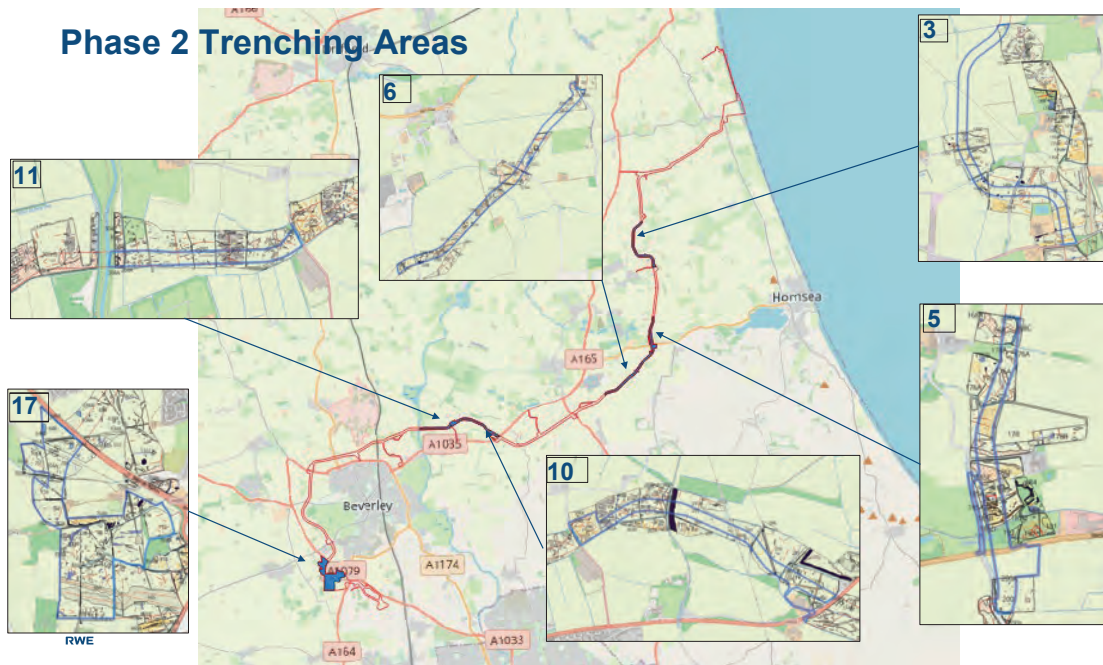
If you work for a company and would like to find out about potential opportunities to work with DBS in the future, or with other projects in the RWE portfolio, please consider registering for **RWE's Supplier Transparency Engagement Programme (STEP)**. Suppliers that register are part of an open-search database, receiving project updates and regular opportunities to meet with supply chain managers involved in RWE's UK projects progressing through development and construction.

<https://uk.rwe.com/our-energy/offshore-wind/working-in-partnership-with-the-offshore-supply-chain/supplier-transparency-engagement-programme/>

"We recognise that companies involved in the offshore wind supply chain are the backbone of our success. By being transparent about what goods and services we and our tier one suppliers need, openly discussing challenges and opportunities, and gaining insights into business capabilities, we can pave the way to further UK supplier success."

Corrine Barry, RWE UK East Coast Director for Net Zero.

Figure 1



Onshore archaeology update

The Phase 2 evaluation trenching campaign ran from May to September 2024 and identified archaeological remains in each of the six areas investigated along the onshore export cable route (see Figure 1). Overall, 223 trenches were excavated and 23 trial pits.

In Routh (Sections 10 and 11), archaeological remains were limited, generally comprising scattered remains of agricultural activity and field boundaries. In Nunkeeling (Section 3), evidence was found of post-medieval field systems but nothing associated with the deserted medieval village of Nunkeeling. Higher densities of archaeological remains were found in Catfoss (Sections 5 and 6) with evidence of settlement and cultural materials including worked animal bone pins and weaving tools likely to be from the Roman period.

You can find out more about the archaeological results on the DBS website: www.doggerbanksouth.co.uk

In addition, we are pleased to confirm that the archaeological geophysical surveys, used to find magnetic anomalies in the ground and highlight potential trial trenching locations, are now complete for the whole onshore development area.



Animal bone artefacts from Catfoss likely to be associated with weaving textiles and leatherwork. Probably of Roman date.

Local Liaison Committee

Meetings with representatives from the Parish Councils located along the onshore export cable route, from landfall at Skipsea to the site of the converter stations near to Bentley, continue to facilitate effective communication between DBS and communities.

In July, the meeting was also attended by a representative from our archaeological contractor, AOC Archaeology, to answer questions about the archaeological trial trenching and share insights into what has been uncovered to date.



RWE's largest ever intake of wind turbine technician apprentices pictured at Coleg Llandrillo Menai Rhyl Campus with their trainer/assessor, Mark McDonough.

Apprentice intake

A group of 16 wind turbine technician apprentices has been recruited to work on RWE offshore wind farms around the UK.



This latest cohort takes the number of RWE apprentices embarking on the course to date to over 100.

Training has started at a college in North Wales, but the apprentices will experience on the job training at RWE's operational offshore wind farms.

If you, or someone you know is interested in applying in 2025, please visit the RWE website for more information <https://uk.rwe.com/career/apprenticeships/>. Provided you meet the scheme's specific minimum requirements, the apprenticeships are open to all, no matter your experience.

Whether you are a school or college leaver looking for your first professional role, a university student who isn't sure where to go next, or an experienced professional looking for a career change, RWE

"It was a bit spontaneous. I wasn't always confident with the academic side and enjoyed hands-on learning, but I applied thinking it was a long shot and got it. And now I'm here! ...Someone I grew up with did the apprenticeship and got a job on Humber Gateway, another wind farm, so I knew it'd be a good company to work for. None of my family do anything with engineering, I'm the first in the family."

Hollie Massey, RWE apprentice

welcomes your application.

Current and former apprentices have come from all backgrounds, and the programmes are tailored to ensure you get the training and support you need.

"I saw it [the apprenticeship] on Indeed, and I'd taken a course before, so applied for it, and didn't mind where I went, so I'm now on the Fleet Servicing. My mum is a cleaner, and my dad is a director in a bottle factory – engineering manager."

Oliver Bridges, RWE apprentice

Year in industry opportunities Summer 2025

Year in Industry places for students are also available at RWE with all positions starting in Summer 2025 advertised on the RWE Careers portal:

<https://www.rwe.com/en/rwe-careers-portal/job-offers>.

These are paid positions for students enrolled in degree courses studying either economics, finance, IT or engineering. Successful candidates are offered a 12-month contract working with the team and gain valuable knowledge, experience and insight into the offshore wind sector.





Pupils engaged in STEM activities.

Primary school videos

In the Summer 2024 edition of the newsletter, we shared news of the launch of our Primary School Engagement Programme.

The work continues this Autumn, with schools participating in a range of fun and engaging STEM activities linked with the offshore wind sector.

To help establish a legacy of the work we are doing, each school receives a STEM kit box containing the resources needed to deliver activities beyond the work delivered by UK STEM on our behalf. To support teachers to deliver

lessons using the kit boxes, we have worked with UK STEM to develop and publish a set of short guidance videos and printable resources on the DBS website which can be accessed by everyone for free.

Even if your school doesn't have a STEM kit box, we hope the videos and resources provide inspiration to help you develop similar workshops independently.



 **DBS**
Offshore Wind

Further information

For more information on the projects, please visit our website at www.doggerbanksouth.co.uk

Contact us:

Email: dbs@rwe.com

Telephone: 0800 254 5459

Website: www.doggerbanksouth.co.uk

Post: FREEPOST DBSOWF