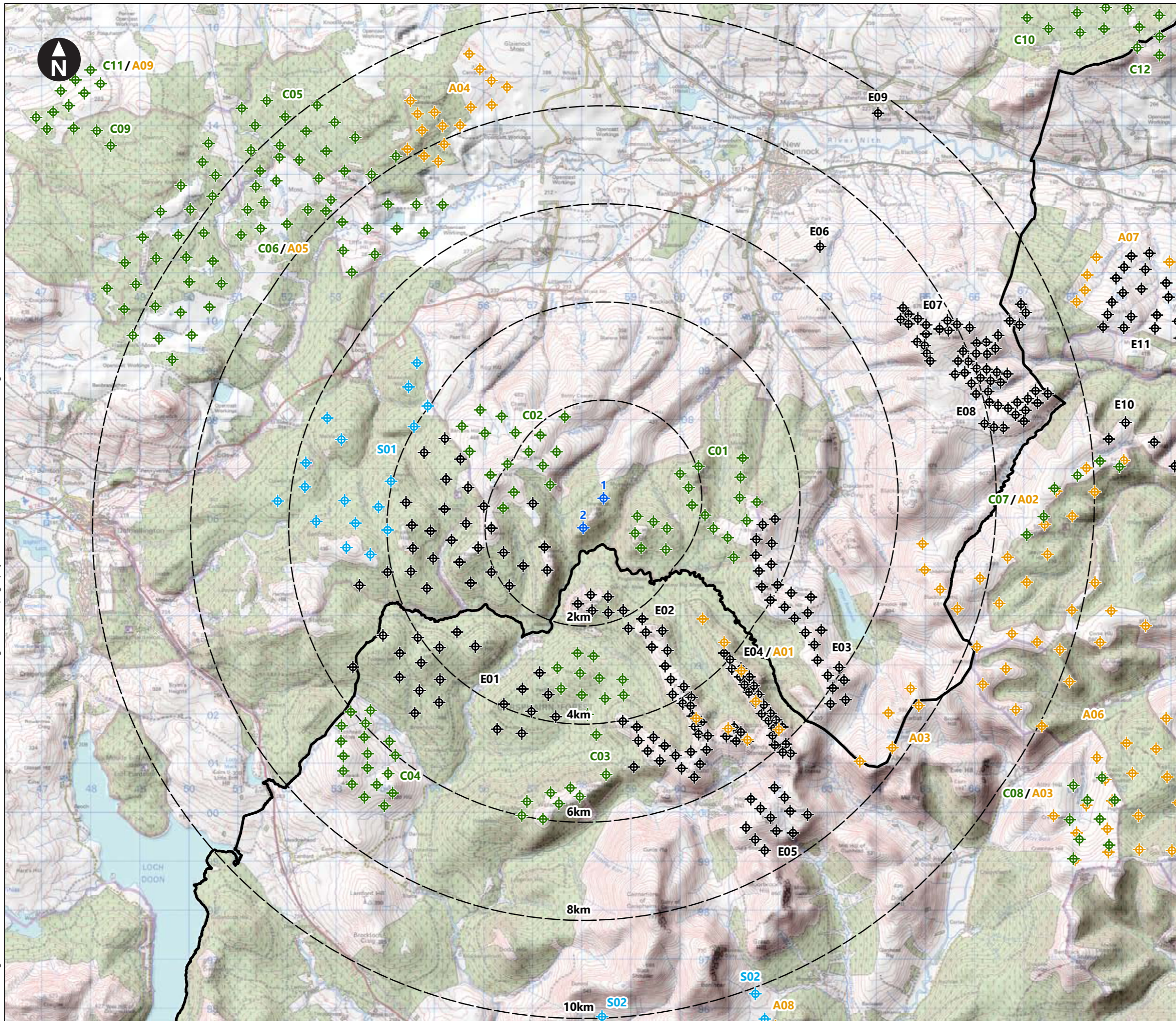


C:\Users\craig.wilson\OneDrive - WSP O365\ArcGIS\Enoch Hill 2\ArcGIS\2023 M\XD\Figure 9.15 Topography 852398-WSPE-FG-SA-00015_R2.mxd Originator: wilsc03



Key

- Proposed turbine locations
- Local authority boundaries
- Lines indicating the distance from the proposed turbines
- Existing / Under Construction Wind Farms
- Consented Wind Farms
- Application Wind Farms
- Scoping Wind Farms (within 10km)

E01) South Kyle (Under Construction)
 E02) Windy Standard Extension
 E03) Afton
 E04) Windy Standard
 E05) Windy Rig
 E06) High Park Farm
 E07) Hare Hill
 E08) Hare Hill Extension
 E09) Mansfield Mains *
 E10) Sanquhar
 E11) Sandy Knowe

* Micro generation schemes less than 50m to blade tip within 10km have been included

C01) Pencloe
 C02) Enoch Hill
 C03) Windy Standard Phase III
 C04) Benbrack
 C05) North Kyle
 C06) Over Hill
 C07) Sanquhar Six
 C08) Lorg
 C09) Rigmuir
 C10) Lethans
 C11) Polquhairn
 C12) Glenmuckloch

A01) Windy Standard Repower
 A02) Sanquhar II
 A03) Lorg Variation
 A04) Greenburn
 A05) Over Hill Variation
 A06) Euchanhead
 A07) Sandy Knowe Extension
 A08) Shepherd's Rig
 A09) Polquhairn Variation

S01) South Kyle II
 S02) Quantans Hill

0 0.5 1 1.5 2 2.5 3 3.5 4 4.5 km
 Scale at A3: 1:75,000

© Crown Copyright. All rights reserved. Licence number AL100001776.

Client

Enoch Hill 2 Wind Farm
 EIA Report

Figure 9.15
Topography

