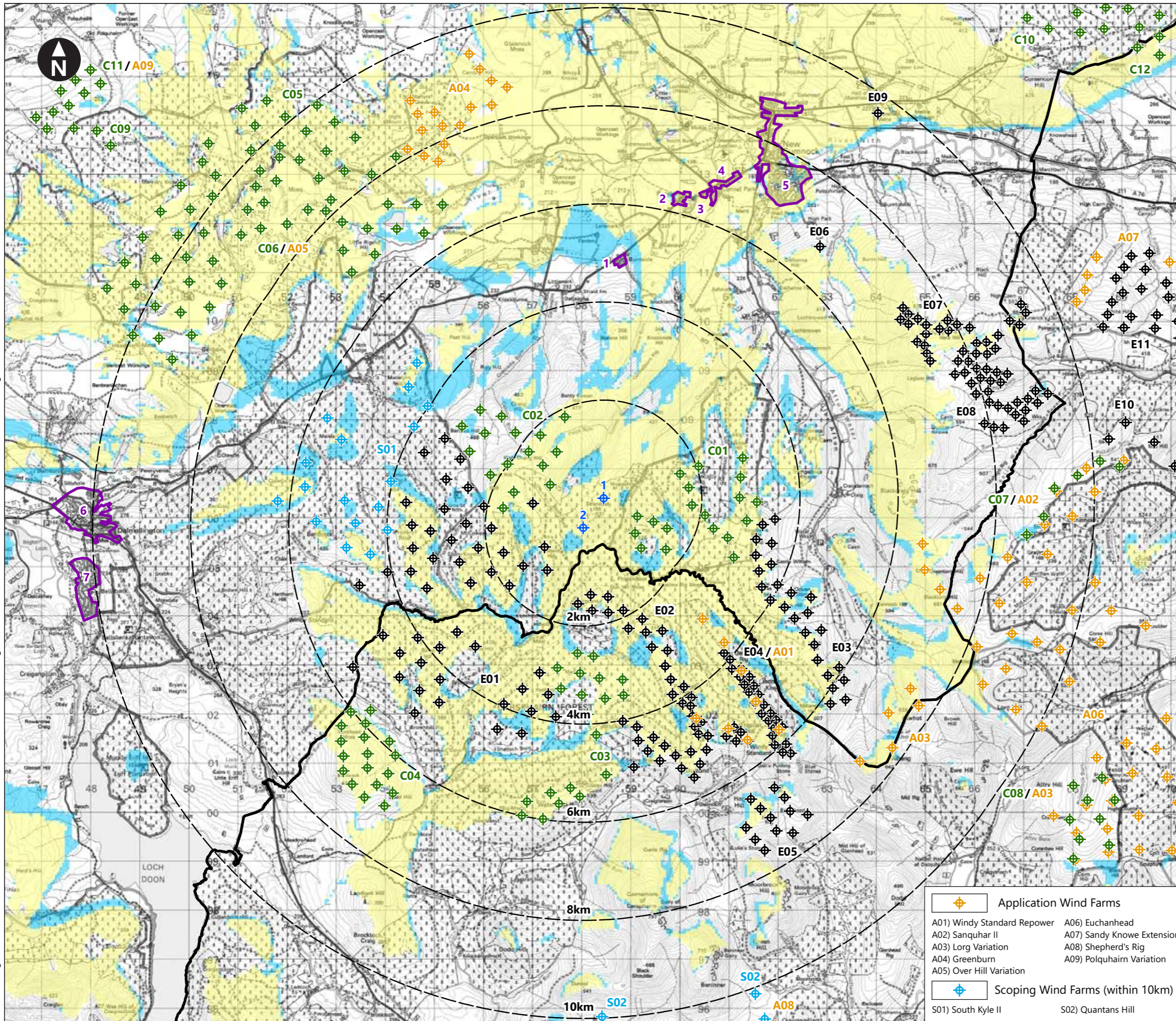


C:\Users\craig.wilson\OneDrive - WSP\0365\ArcGIS\Enoch Hill 2\ArcGIS\2023 M\XD\Figure 9.19 Settlements 852398-WSPE-FG-SA-00019_R2.mxd Originator: wilsco3



Key

- Proposed turbine locations
- Local authority boundaries
- Lines indicating the distance from the proposed turbines
- Settlements
- One turbine may be theoretically visible
- Two turbines may be theoretically visible
- Existing / Under Construction Wind Farms
- Consented Wind Farms

| | | |
|----------------|----------------|------------------|
| 1) Burnside | 4) Leggate | 6) Dalmellington |
| 2) Bankglen | 5) New Cumnock | 7) Bellsbank |
| 3) Connel Park | | |

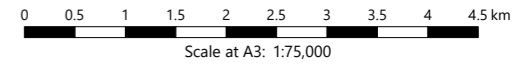
| | |
|--------------------------------------|--------------------------|
| E01) South Kyle (Under Construction) | E06) High Park Farm |
| E02) Windy Standard Extension | E07) Hare Hill |
| E03) Afton | E08) Hare Hill Extension |
| E04) Windy Standard | E09) Mansfield Mains * |
| E05) Windy Rig | E10) Sanquhar |
| | E11) Sandy Knowe |

* Micro generation schemes less than 50m to blade tip within 10km have been included

| | |
|-------------------------------|-------------------|
| C01) Penciloe | C07) Sanquhar Six |
| C02) Enoch Hill | C08) Lorg |
| C03) Windy Standard Phase III | C09) Rigmuir |
| C04) Benbrack | C10) Lethans |
| C05) North Kyle | C11) Polquhairn |
| C06) Over Hill | C12) Glenmuckloch |

Notes: This drawing is based on a computer generated Zone of Theoretical Visibility (ZTV). The areas shown indicate the maximum theoretical visibility of the proposed turbines using OS Terrain 50 data only and do not take account of any screening from vegetation or built-form. The ZTV also includes an adjustment that allows for the Curvature and Light Refraction of the Earth.

This figure has been based on the following parameters:
 Turbine layout file: LMONQUHILL007.WFL
 Hub height: 81.9m
 Rotor diameter: 136m
 Height to blade tip: 149.9m



© Crown Copyright. All rights reserved. Licence number AL100001776.

Client

Enoch Hill 2 Wind Farm
EIA Report

Figure 9.19
Settlements

| | | |
|----------------------------------|-----------------------------|----------------------------|
| Application Wind Farms | A01) Windy Standard Repower | A06) Euchanhead |
| | A02) Sanquhar II | A07) Sandy Knowe Extension |
| | A03) Lorg Variation | A08) Shepherd's Rig |
| | A04) Greenburn | A09) Polquhairn Variation |
| | A05) Over Hill Variation | |
| Scoping Wind Farms (within 10km) | S01) South Kyle II | S02) Quantans Hill |

April 2023

