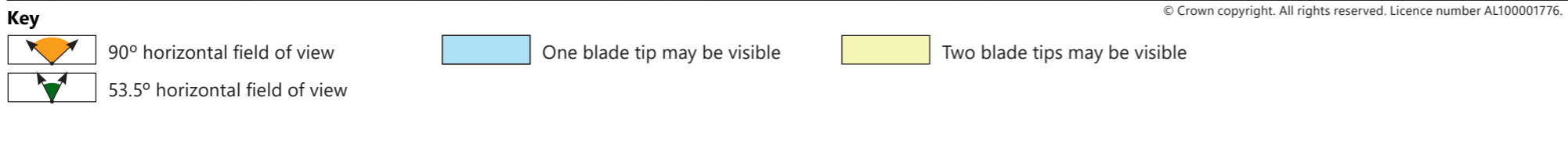
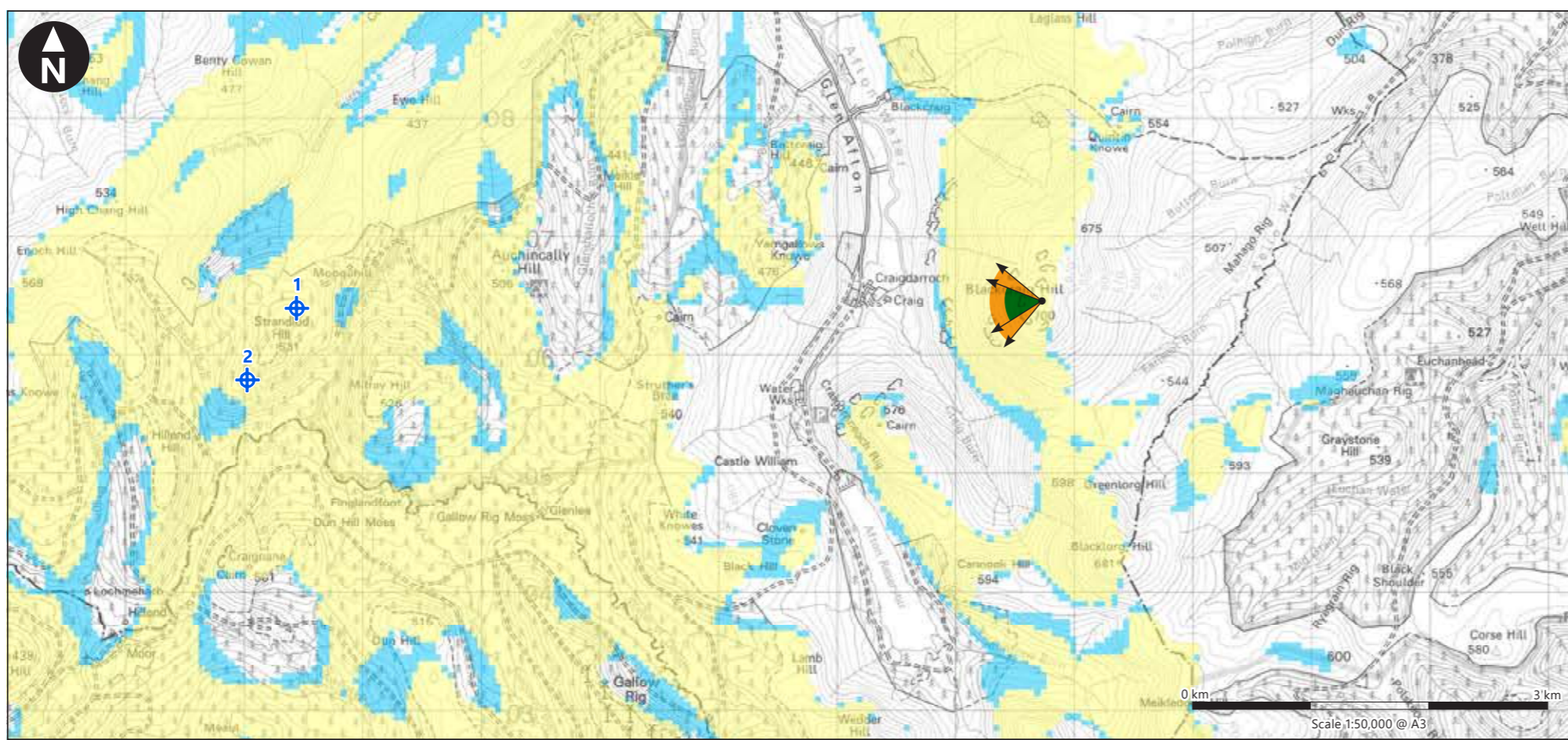
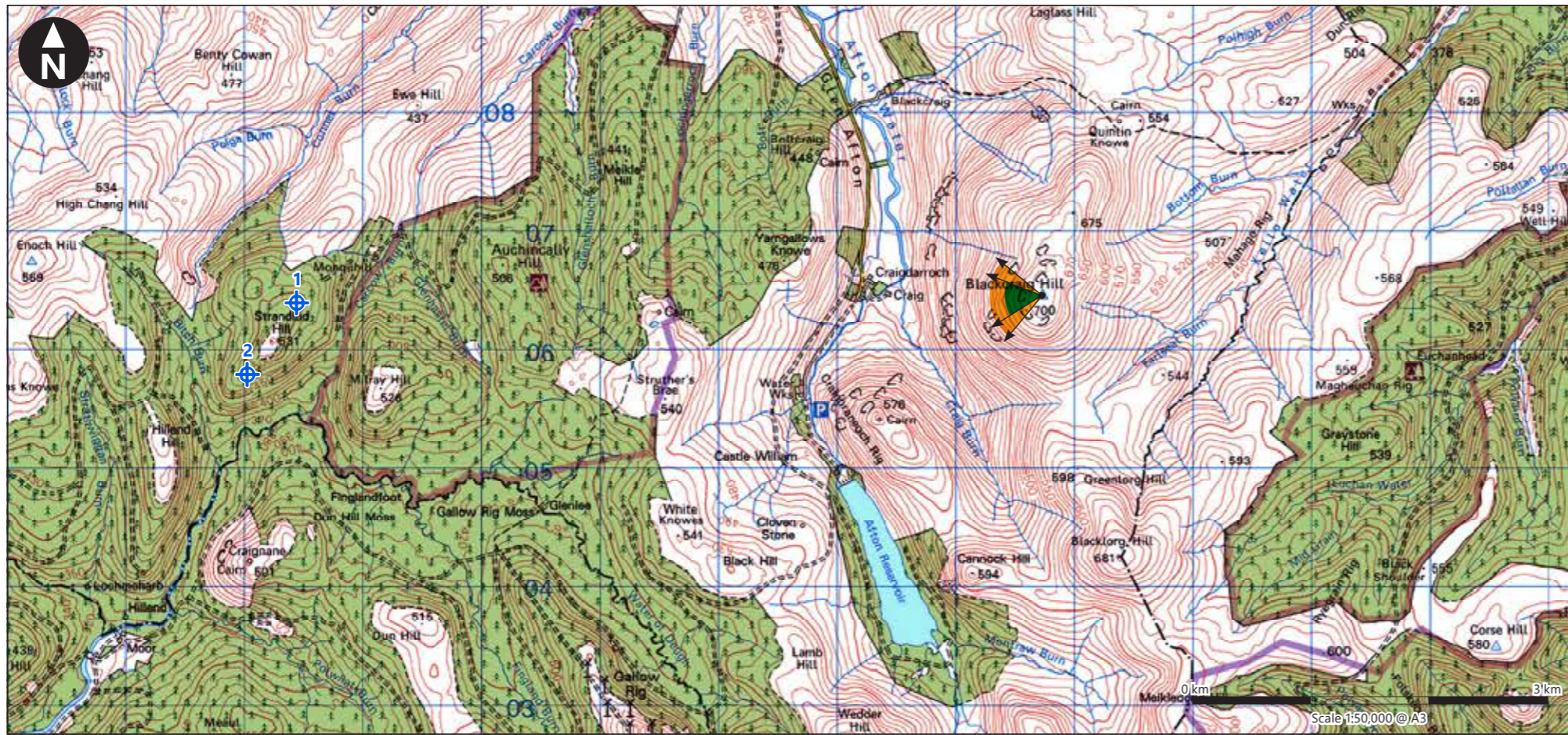


H:\data\Projects\38388 SUB - Monquihill Wind Farm\Drawings\2023 Enoch Hill 2\Figure 9.24a-e VP3 Blackcraig 852398-WSP-FG-SA-00026_R2.indd Originator: wilsc03



Viewpoint Parameters

| | |
|-----------------------------------------------------------|----------------------------|
| OS reference: | E264 733, N606 449 |
| Ground Level Elevation: | 700m AOD |
| Camera Height: | 1.5m AGL |
| Direction of view to site centre ³ : | 267° |
| Distance to nearest turbine: | 6,284m |
| Number of blade tips theoretically visible ⁴ : | 2 |
| Number of hubs theoretically visible ⁴ : | 2 |
| Date and time of viewpoint photography: | 07/03/2023 @ 14:30 |
| Camera: | Canon EOS 5D Mk2 |
| Lens: | 50mm (Canon EF 50mm f/1.8) |

Information on the limitations of visualisations:

Visualisations of wind farms have a number of limitations which you should be aware of when using them to form a judgement on a wind farm proposal. These include:

- A visualisation can never show exactly what the wind farm will look like in reality due to factors such as: different lighting, weather and seasonal conditions which vary through time and the resolution of the image;
- The images provided give a reasonable impression of the scale of the turbines and the distance to the turbines, but can never be 100% accurate;
- A static image cannot convey turbine movement, or flicker or reflection from the sun on the turbine blades as they move;
- The viewpoints illustrated are representative of views in the area, but cannot represent visibility at all locations;
- To form the best impression of the impacts of the wind farm proposal these images are best viewed at the viewpoint location shown;
- The images must be printed at the right size to be viewed properly (260mm by 820mm);
- You should hold the images flat at a comfortable arm's length. If viewing these images on a wall or board at an exhibition, you should stand at arm's length from the image presented.
- The ZTV presented here takes no account of the screening effects of vegetation or buildings.

Additional notes:

1. This figure has been based on the following parameters:
Turbine layout file: LMONQUHILL007.WFL
 - Hub height: 81.9m
 - Rotor diameter: 136m
 - Height to blade tip: 149.9m
2. Turbine positions could be subject to micro-siting (typically up to 50m).
3. Direction given as bearing relative to Grid North (BNG).
4. The number of turbine blades and hubs theoretically visible is counted from the wireframe in sets of 3 and ignores the screening effects of any intervening objects and forestry.
5. This figure is produced in accordance with SNH Visual Representation of Wind Farms 2017 guidance and also broadly accords with the Landscape Institute's Technical Guidance Note 6/19 (Type 4 Visualisation).

Client



Enoch Hill 2 Wind Farm
EIA Report

**Figure 9.24a
Viewpoint 3:
Blackcraig Hill**

April 2023



© Crown copyright. All rights reserved. Licence number AL100001776.