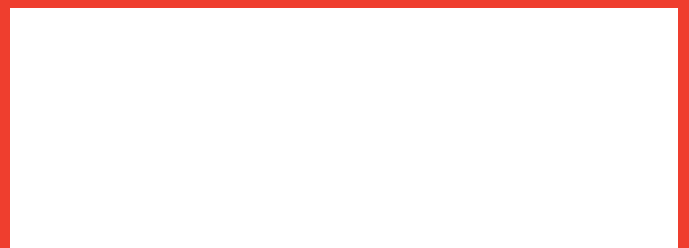




# Enoch Hill Wind Farm

## Pre-Application Consultation Report

September 2015



## Contents

Contents .....	0
1. Introduction .....	2
Proposals for Enoch Hill Wind Farm .....	2
Overview of Consultation Activity .....	3
2. Methodology and Programme .....	6
Statutory Context .....	6
Planning Advice Note (PAN) 3 / 2010 Community Engagement .....	7
3. Programme of Activity .....	8
Public Events .....	9
4. Other Engagement .....	12
5. Consultation Findings .....	14
6. Impact from Community Consultation on the Proposals .....	24
Key issues arising from the consultation .....	24
Design Iterations .....	33
Appendix I – Newsletters .....	37
Appendix II –Public Information Day Materials .....	39
Press Coverage .....	39
Exhibition Boards .....	41
Poster for Public Information Days .....	53
Appendix III – Public Exhibition Materials .....	54
Exhibition Boards .....	56
Maps on display at Public Exhibitions .....	66
Photomontages on display at Public Exhibitions .....	70
Advert for Public Exhibition .....	76
Press Coverage .....	77
Poster for Public Exhibitions .....	78
Stakeholder Invite Letter .....	79
Appendix IIII – Project Website .....	80
Appendix V – Materials from the Community Liasion Group .....	81
Terms of Reference .....	81
Minutes – CLG Meeting 27 <sup>th</sup> May 2014 .....	84
Minutes – CLG Meeting 2 <sup>nd</sup> July 2014 .....	88
Agenda – CLG Meeting 10 <sup>th</sup> September 2014 .....	94
Minutes – CLG Meeting 10 <sup>th</sup> September 2014 .....	95

Appendix VI – Site Map ..... 105

# **1. Introduction**

## **Proposals for Enoch Hill Wind Farm**

This Pre-Application Consultation (PAC) Report was prepared by PPS to explain, in detail, the consultation programme undertaken by E.ON to consult on its proposals for a 23 turbine wind farm located to the south west of New Cumnock in East Ayrshire. A site map is available in [Appendix VI](#).

The consultation consisted of four Public Information Days held on, 6<sup>th</sup>, 7<sup>th</sup>, 14<sup>th</sup> and 15<sup>th</sup> of November 2012. Two Public Exhibitions were also held on 7<sup>th</sup> and 8<sup>th</sup> of October 2014. As part of the consultation process a Community Liaison Group (CLG) was formed; and there was ongoing dialogue with local residents and stakeholders.

The Public Exhibitions were advertised in the New Cumnock Chronicle as well as by newsletters, postcards and letters to residents and businesses within 15km radius of the site. The Public Information Days and the Public Exhibitions were all well attended. All of the questionnaires have been collated and analysed to be submitted with the formal planning application to the Scottish Government's Energy Consents Unit.

## Overview of Consultation Activity

Pre-application consultation has been undertaken with local residents, stakeholders and elected members in a number of ways including:

- ✓ Four Public Information Days:
  - Lagwyne Village Hall, Carsphairn , 6<sup>th</sup> November 2012
  - New Cumnock Community Education Centre, 7<sup>th</sup> November 2012
  - Hillview Leisure Centre, Kelloholm, 14<sup>th</sup> November 2012
  - Dalmellington Community Centre, 15<sup>th</sup> November 2012

The Public Information Days were advertised in the following ways:

- A press release was issued to the Cumnock Chronicle, Recharge News and Utility Week during the week beginning the 15<sup>th</sup> of October 2012 see [Appendix II](#) for copies of the press coverage.
- Posters were sent to 36 local businesses see [Appendix II](#) for a copy of the poster.
- Letters were also sent to:
  - 72 local residents and businesses
- E.ON's Stakeholder Engagement Consultants Ayrnet Marketing made calls to Cumnock and New Cumnock ward members.
- E.ON's Stakeholder Engagement Consultants Ayrnet Marketing made calls to the following Community Councils to invite them along to the Public Information Days. In addition to this direct invites were also sent out to each of these groups:
  - Carsphairn Community Council
  - Kirkconnel and Kelloholm Community Council
  - New Cumnock Community Council
  - Sanquhar Community Council

- ✓ Two Days of Public Exhibitions:

- Dalmellington Community Centre, Tuesday 7 October 2014, 4pm to 8pm.
- New Cumnock Community Centre, Wednesday 8 October 2014, 4pm to 8pm.

The Public Exhibitions were advertised in the following ways:

- Newsletters were distributed to 10144 local residents and businesses within 15km of the site. See [Appendix I](#) for a copy of the newsletter.
- An advert was placed in the Cumnock Chronicle on the 24<sup>th</sup> September and 1<sup>st</sup> October 2014. See [Appendix III](#) for a copy of the advert.
- Posters were sent out to 12 local businesses.
- Letters were also sent to: (See [Appendix III](#) for a copy of the letter).
  - Local Councillors for Cumnock and New Cumnock Ward
  - Local Councillors for the Doon Valley Ward
  - Jim Hume MSP
  - Joan McAlpine MSP
  - Claudia Beamish MSP
  - Chic Brodie MSP
  - Aileen McLeod MSP
  - Adam Ingram MSP
  - Graeme Pearson MSP
  - Paul Wheelhouse MSP
  - Catrine Community Trust
- E.ON's Stakeholder Engagement Consultants Ayrnet Marketing made calls to invite the following Community Councils to the Public Exhibition
  - New Cumnock
  - Cumnock Landward
  - Ochiltree
  - Patna
  - Dalmellington
  - Carsphairn
  - Kirkconnel & Kelloholm
  - Sanquhar

- ✓ Dedicated Project website set up and updated throughout the process
- ✓ Ongoing consultation with local residents, Community Councils and stakeholders
- ✓ Meetings with local residents:
  - Two separate house visits on 3<sup>rd</sup> July 2014
- ✓ CLG set up to feed back into the design process. Four meetings of the CLG held on:
  - 27<sup>th</sup> May 2014
  - 2<sup>nd</sup> July 2014
  - 10<sup>th</sup> September 2014
  - 15<sup>th</sup> July 2015

The membership of the CLG was made up of local residents who had expressed an interest as well as the following community councils and local groups:

- New Cumnock
- Carsphairn
- Kirkconnel & Kelloholm
- Sanquhar
- Robert Burns Club
- Carsphairn Renewable Energy Fund Ltd

A Freephone number, Freepost address, email address and a project website were prominent in all of the correspondence with residents and stakeholders.

Enoch Hill Wind Farm  
 Freepost RRSE-KZCU-AZJL  
 E.ON  
 Westwood Business Park  
 Westwood Way  
 Coventry  
 CV4 8LG  
 swscotland@eon.com

## **2. Methodology and Programme**

### **Statutory Context**

E.ON is aware of the importance of involving local people in development proposals, both prior to and following the submission of a planning application.

Proposals for wind farms larger than 50MW are subject to the consenting procedures set out in Section 36 of the Electricity Act 1989 (the Electricity Act) and are made directly to the Scottish Ministers. As this development proposal is for a wind farm of up to 83.2 MW, an application is being made under Section 36 of the Electricity Act.

Although this application is being submitted directly to the Scottish Ministers under Section 36 of the Electricity Act, E.ON believe in following the principle of the consultation process that applies to 'Major' Planning Applications as defined by The Town and Country Planning (Development Management Procedure) (Scotland) Regulations 2013. This enables the local community and all those with an interest in the proposals a clear opportunity to provide comment and feedback comment on the proposals.

The value of consulting communities in advance of the submission of a planning application is gaining greater recognition. The Town and Country Planning (Development Management Procedure Regulations (Scotland) 2013 and the relevant provisions of the Town and Country (Scotland) Act 1997 as amended by the Planning etc. (Scotland) Act 2006, set out the planning application procedures including the requirements for statutory pre-application consultation on developments related to national and major developments. This places much greater importance on the involvement of local communities and stakeholders.

The Planning etc. (Scotland) Act was designed to widen the inclusion of local residents in the planning system and encourages compulsory pre-application consultation on major developments. Enoch Hill Wind Farm will have a generating capacity of over 50MW, it is classed a national development, therefore E.ON has conducted a thorough public consultation over and above what is required by legislation.



### **Planning Advice Note (PAN) 3 / 2010 Community Engagement**

Planning Advice Note (PAN) 3/2010 Community Engagement is an update of PAN 81 which advises that in order for the community engagement to be successful, it is important that everyone interested in the future development of the community, village, town or city they live in, should understand the planning process. It is important for developers to involve residents at the earliest opportunity so they can feel confident that engaging in the process has been meaningful:

*“Effective engagement with the public can lead to better plans, better decisions and more satisfactory outcomes and can help to avoid delays in the planning process. It also improves confidence in the fairness of the planning system. The Scottish Government expects engagement with the public to be meaningful and to occur from the earliest stages in the planning process to enable community views to be reflected in development plans and development proposals (page 3, paragraph 2).”*

For the purpose of PAN 3/2010 the term ‘consultation’ is the:

*“Dynamic process of dialogue between individuals or groups, based on a genuine exchange of and, normally, with the objective of influencing decisions, policies or programmes of action. The terms ‘engagement’ and ‘involvement’ are generally interchangeable and are taken to mean the establishment of effective relationships with individuals or groups. Participation is everything that enables people to influence the decisions and get involved in the actions that affect their lives. In the context of this document engagement is, in effect, giving people a genuine opportunity to have a say on a development plan or proposal which affects them; listening to what they say and reaching a decision in an open and transparent way to ensure they are taking account of all views expressed (page 3, paragraph 1).”*

E.ON has been dedicated to undertaking effective and early consultation methods and this includes tailoring its strategies to suit individual communities. Resident’s values and issues of importance vary and we design our consultation programmes to reflect that.

### 3. Programme of Activity

Consultation Activity	Stakeholder Group	Date
<u>Public Information Day</u> – Ladwyne Village Hall	Local residents and stakeholders	6 <sup>th</sup> November 2012
<u>Public Information Day</u> – New Cumnock Community Centre	Local residents and stakeholders	7 <sup>th</sup> November 2012
<u>Public Information Day</u> – Hillview Leisure Centre	Local residents and stakeholders	14 <sup>th</sup> November 2012
<u>Public Information Day</u> – Dalmellington Community Centre	Local residents and stakeholders	15 <sup>th</sup> November 2012
<u>Community Liaison Group</u> - New Cumnock Community Centre	CLG Members - Local residents and stakeholders	27 <sup>th</sup> May 2014
<u>Community Liaison Group</u> - New Cumnock Community Centre	CLG Members - Local residents and stakeholders	2 <sup>nd</sup> July 2014
<u>Meetings with local residents</u> – Two house visits with local residents	Local residents	3 <sup>rd</sup> July 2014
<u>Community Liaison Group</u> - New Cumnock Community Centre	CLG Members - Local residents and stakeholders	10 <sup>th</sup> September 2014
<u>Public Exhibition</u> – Dalmellington Community Centre	Local residents and stakeholders	7 <sup>th</sup> October 2014
<u>Public Exhibition</u> – New Cumnock Community Centre	Local residents and stakeholders	8 <sup>th</sup> October 2014
<u>Community Liaison Group</u> - New Cumnock Community Centre	CLG Members - Local residents and stakeholders	15 <sup>th</sup> July 2015

## **Public Events**

### **Overview**

E.ON is committed to open and honest dialogue with local communities and all stakeholders and has sought from the outset to undertake meaningful and open consultation on the proposed Enoch Hill Wind Farm.

### **Public Information Days – November 2012**

The aim of the Public Information Days was to introduce the project to the community and provide an opportunity for all stakeholders to feedback on the proposal from a very early stage. This way, E.ON was able to consider community feedback from a very early point in the design process. It was also an opportunity to obtain views from the community on E.ON's proposals for consultation and engagement, for example, suggestions of locations and timings of public events, to ensure that the process was as inclusive as possible and reflects the dynamics of the local area.

The Public Information Days were advertised with posters placed in 36 local businesses around the community. 72 local residents were sent a letter to introduce the project and to invite them to the Public Information Days.

The following Public Information Days were held:

- Lagwyne Village Hall, Carsphairn , 6<sup>th</sup> November 2012
- New Cumnock Community Education Centre, 7<sup>th</sup> November 2012
- Hillview Leisure Centre, Kelloholm, 14<sup>th</sup> November 2012
- Dalmellington Community Centre, 15<sup>th</sup> November 2012

Questionnaires were provided so people could respond easily and in writing on aspects of the proposal. A Freepost address was provided so people were able to take questionnaires home and respond at their leisure.

Materials from the Public Information Days can be found in [Appendix II](#).

On display at the Public Information Days were 12 exhibition boards which outlined:

- Introduction to Benbrack, Enoch Hill and Lorg Wind Farms
- Background on E.ON Climate and Renewables and E.ON in Scotland
- Overview of the three proposals including a site map
- Information on why wind farms are needed
- Information on how the turbines would be delivered to the site
- Details on the environmental assessments being undertaken by E.ON
- A timetable for the projects
- Information on where to find further information as well as how to provide feedback on the proposals
- Individual site maps and contact details for each project

### **Public Exhibitions**

The aim of the Public Exhibitions was to provide an opportunity for all stakeholders to view the proposals for Enoch Hill Wind Farm and importantly provide valuable feedback on the proposals.

The timings of and venues for the Public Exhibitions were also intended to provide members of the public with a choice of times to attend which suited different needs and circumstances. The Exhibitions were advertised in Cumnock Chronicle on the 24<sup>th</sup> of September and 1<sup>st</sup> of October 2014. Newsletters were also distributed to local residents and businesses within a 15km radius of the site in advance to notify them of the proposals and the Exhibition. A list of stakeholder groups who were sent direct invitations to attend the Exhibition can be found on [page 4](#).

Posters were also displayed at 12 local businesses to promote the Public Exhibitions.

The following Public Exhibitions were held:

- Dalmellington Community Centre, Tuesday 7 October 2014, 4pm to 8pm.
- New Cumnock Community Centre, Wednesday 8 October 2014, 4pm to 8pm.

On display at the Public Exhibition were 12 exhibition boards which outlined:

- Background on E.ON Climate and Renewables
- Details on the environmental assessments begin undertaken by E.ON
- Details on how the wind farm might look
- Details on how E.ON have listened to the community
- What happens next
- Information on working with the community
- Information on community benefit
- Overview of the proposals including a site map
- Information on how the turbines would be delivered to the site
- A project timetable
  
- Information on where to find further information as well as how to provide feedback on the proposals

In addition to the above exhibition boards, ZTV map, layout map, constraints map, route location map were on display as were photomontages from various view points to the layout of the wind farm being proposed at that point. The project team were also on hand to show computerised wireframes of what the proposed turbines may look like from attendees' properties or prominent locations.

Questionnaires were provided so that people could respond easily and in writing on aspects of the proposal. A Freepost address was provided so that people were able to take questionnaires home and respond at their leisure. Materials from the Public Exhibition can be found in [Appendix III](#)

## **4. Other Engagement**

In addition to public events, E.ON provided additional opportunities for stakeholders to obtain information on the proposal and to feedback on the project. This meant that anyone who was not able to attend the events could still participate in the consultation.

### **Community Liaison Group**

E.ON formed a CLG in order to provide a forum for additional direct, two-way communication between E.ON and the community. The CLG provided an opportunity for community representatives to ask questions and to feedback in depth on project details.

A total of four CLG meetings were held throughout the process on Enoch Hill Wind Farm.

A copy of the materials from the respective CLG meetings can be found in [Appendix V](#).

### **Website, Email, Freephone and Freepost address**

E.ON created a dedicated project website and email address and provided a Freephone number and Freepost address. The website was updated as the project progressed and included all newsletters, materials from public events and CLG meeting minutes.

Enoch Hill Wind Farm Freepost RRSE-KZCU-AZJL E.ON Westwood Business Park Westwood Way Coventry CV4 8LG swscotland@eon.com
--

The email address, Freephone number and Freepost address allowed people with interest in or questions about the project to get in touch with E.ON directly at any point in the process. The E.ON project team responded to each individual query and all feedback received through these methods was considered as part of engagement and consultation process.

## 5. Consultation Findings

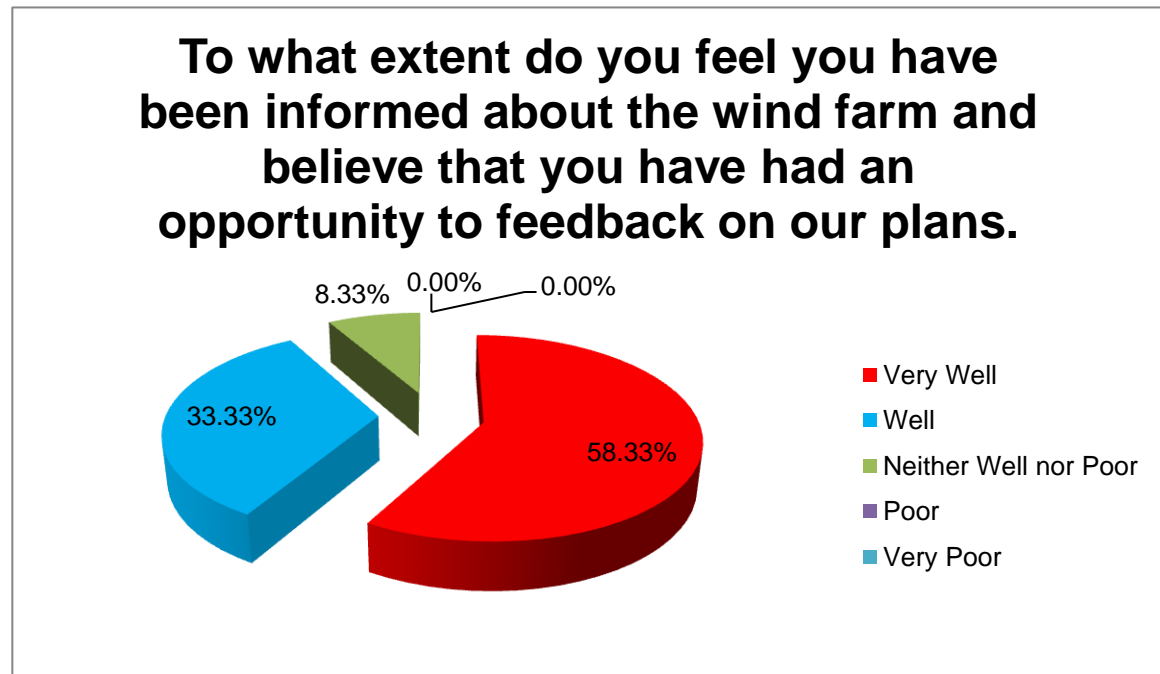
The views of the public have been gauged from the results of the public opinion surveys. The surveys asked questions relating to how well people felt they had been informed about the wind farm and how they felt about the proposed layout of the wind farm. The feedback fed into the design process and the steps that E.ON has taken to address these concerns can be found later in Section 6 of the report.

Please note that due to there only being two questionnaires being completed at the Public Information Days, we have not produced a summary of the responses in this section. However the comments from the feedback have been included in Section 6 of the report.

### Public Exhibitions

6. To what extent do you feel you have been informed about the wind farm and believe that you have had the opportunity to feedback on our plans?

Very Well	58.33% (7)
Well	33.33% (4)
Neither Well Nor Poor	8.33% (1)
Poor	0
Very Poor	0





7. What could we have done better?

**Answer and associated comments**

Moving wireframes on a PC. Appreciated darkening of the turbines on wireframes to assist visibility

8. What do you think of the proposed layout for Enoch Hill Wind Farm?

(Wording in red denotes box ticked)

**Answer and associated comments**

I'm satisfied it takes into consideration the key sensitives in the area

I have specific concerns about this wind farm, for example concerns about specific turbines. Concerned about access on B741

I don't like wind farms in general
I'm satisfied it takes into consideration the key sensitives in the area
I Like it
I Like it
I'm satisfied it takes into consideration the key sensitives in the area
(no box ticked) Considerable visual impact on local community though has improved with local consultation

As I stay in the area between new Cumnock and Dalmellington will we be informed when windfarm lorries are coming onto our roads? It is our only road to New Cumnock

I'm satisfied it takes into consideration the key sensitives in the area

I'm Neutral

I'm satisfied it takes into consideration the key sensitives in the area

9. Do you have any comments on our proposed delivery route? Is there anything you'd like to see included in our traffic management plan?

**Comments**

the B741 widened and resurfaced

Lack of communication on community benefit
No, it was very informative and well laid out
You know best how to get to the site
Exact figures on traffic impact on B741 including cumulative impact of all planned developments

When Opencant moved their dumptruck they hit a pot hole and blocked the road because of and electric wire on the road.  
Could not get home from work that it why I feel we should be informed.

Understand ' the best route' but would hope that a timetable would be published in local press if delivery required

10. If you have any further comments please use the box below.

Comments
Please send details and maps as requested
This area has been raped for coal with no long term community benefit. We will not allow the same to happen with wind.
Fantastic Opportunity for the area
Very informative and well presented

\*Conversation\* There is a footpath along the B741 that John walks down. He wants to know if the wind farm goes ahead, that he will still have a footpath to walk along the B741

More info re Afton reservoir installation

Want to be part of the CLG



Concerns over too many windfarm applications in area. Also overall effect on the landscape, but accept that E.ON have made endeavours to find best solution for the community and their business

## **6. Impact from Community Consultation on the Proposals**

The following section sets out the key issues that were raised during the pre-applications consultation period from both the comments received during the Public Information Days, Public Exhibitions, CLG and to those raised in the various community meetings that E.ON attended. Where appropriate, comments have been made to address these issues or indeed highlight where changes have been made to the application as a direct result of the feedback received.

### **Key issues arising from the consultation**

<b>Community Feedback</b>	<b>E.ON Commitment</b>	<b>EIA Responses</b>
<b>Public Information Days</b>		
Interested to understand how E.ON will bring in equipment and turbines using current infrastructure that was not designed for such loads.	E.ON to take into consideration. Community to be shown planned route at Public Exhibition. Opportunity to provide feedback on timing of turbine deliveries and speed restrictions for heavy goods vehicles. In order to minimise potential impact on the local community	A Construction stage Traffic Management Plan (TMP) will be produced following consent of the Development and will be required as part of the planning conditions. This will consider existing volumes of traffic and commuter routes on the road and include an outline of how this will be managed to ensure minimal disruption to surrounding communities and visitors
Question on how E.ON propose to reinstate the area back to its current standards.	As part of planning consent, E.ON is required to decommission the site after 25 years and reinstate to the site's original condition. The degree of decommissioning will be agreed with the Planning Authority.	Decommissioning will be dealt with through an appropriate planning condition

Community Feedback	E.ON Commitment	EIA Responses
Request to have clearer visibility of turbines on the digital wireframe application	N/A	Changed settings to improve visibility on the program, allowing the community a clearer view of the wireframe and potential views.
<b>CLG 27th May 2014</b>		
Question as to why E.ON aren't using the A77/A70 to deliver the turbines.	Transport consultants have carried out a Swept Path Analysis (SPA) to look in detail at specific corners and a low bridge. Based on this information, a suggested route has been proposed. It has not been possible to avoid the turbines being delivered through New Cumnock.	A Traffic Assessment will be completed if consent is granted, to look at the existing condition of the roads being utilised by construction traffic and understand any required improvements.
Question on the delivery times of turbines, specifically whether turbines would be delivered at night.	A construction stage Traffic Management Plan (TMP) will be produced following consent of the Development, which will be considered as a planning condition. This will look at existing volumes of traffic and commuter routes on the road and include an outline of how this will be managed to ensure minimal disruption to surrounding communities and visitors.	A Traffic Assessment will be completed upon planning consent to look at the existing condition of the roads being utilised by construction traffic and any required improvements.
Query over whether there was an intention to connect to the grid at Meikle Hill.	E.ON has submitted a grid application and a new sub-station will be provided by SPEN at Enoch Hill site. The cables from this on-site sub-station will feed back to New Cumnock sub-station.	The grid connection is treated as a separate application and is not part of the Environmental Statement.
Question regarding the peat on site.	E.ON are undertaking phase 1 and phase 2 peat depth surveys and carbon balance calculations as part of the application process.	Areas of deep peat will be avoided. A Peat Slide Risk Assessment and Carbon Balance calculations are incorporated as appendices in the EIA. See Chapter 6:

Community Feedback	E.ON Commitment	EIA Responses
		Renewable Energy Policy, Carbon Balance and Peat Management and Chapter 13 Geology, Hydrology & Hydrogeology in the ES.
Query as to whether reduction in turbines would make the site non-viable.	Further work would need to be carried out to understand wind yield and commercial impacts to determine the viability of smaller capacity sites.	N/A
Comments on the high levels of cumulative activity , highlighting that there are over 400 turbines in planning	A Cumulative Impact Assessment will form part of the EIA that will be submitted with the planning application.	Cumulative effects of wind farms in the planning, consented, construction and operational stages within 35 km of the development are considered for areas as part of the cumulative LVIA in the Environmental Statement.
Question of whether we will supply photomontages of all viewpoints will we do photomontages of all of the viewpoints.	E.ON will produce photomontages from a variety of viewpoint (VP) locations.	See Chapter 9: Landscape and Visual
Question regarding the wind speeds on site.	Two anemometer masts are on site to measure wind yield on site.	Please see the ES.
Query regarding ECDU restrictions on turbine heights.	There are no height restrictions for proposed turbines, but due consideration does need to be given to Landscape and Visual impact. It will also need to be taken into consideration along with community	See Chapter 9: Landscape and Visual

Community Feedback	E.ON Commitment	EIA Responses
	feedback and other environmental restrictions when developing a wind farm	
Question about decommissioning of turbines and whether we have put a bond in place.	E.ON offers either a Parent Company Guarantee (PCG) or a bank bond. E.ON encourages a PCG as it can be a better security to have an E.ON PCG than a bond from a UK Clearing Bank. However if the Scottish Government reject the PCG then we will arrange for a banking bond.	Decommissioning will be dealt with through an appropriate planning condition
<b>Community Liaison Group – 2nd July 2014</b>		
Question regarding the southern extension for pylons and whether they came within the site.	Pylons don't come through the site.	N/A
Question regarding why E.ON are not putting more than 23 turbines on the site.	Considerations of the site characteristics have led to this quantity of turbines being considered the most acceptable. For instance, the gradient on the site would require a cut and fill technique to level the ground in some areas, making it harder to develop there. The developable area is also restricted by the requirement to keep turbines at least 1km from residential dwellings.	See Chapter 3: Site Selection and Design Evolution.
Questioned whether E.ON would consider using turbines of varying heights across the site.	This is something we have done on other sites with aviation issues but it is not envisaged for Enoch Hill.	See Chapter 9: Landscape and Visual
Question regarding how tall the	E.ON submitted a scoping report for turbines up to 150m to tip, but the actual turbine height has not been	You can find details of this in Chapter 3: Site

Community Feedback	E.ON Commitment	EIA Responses
turbines are planned to be.	determined. Our current layout is on the assumption of 130m to tip.	Selection and Design Evolution of the ES
Comments that this is more than double the 70m recommended in the East Ayrshire Land Capacity Study and E.ON are not taking into account the East Ayrshire Capacity Study which recommends that the area should not accommodate any turbines above 70m to tip.	E.ON always consults with local planning recommendations throughout the design of the wind farm. The 70m (to blade tip) is advisory in nature and these smaller turbines would not be suitable for this site.	See Chapter 3: Site Selection and Design Evolution. And Chapter 9 Landscape and Visual
Question on the reason for this site selection.	When developing a wind farm site, E.ON look for; good wind speeds, good grid connection, no environmental designations, and away from more populated areas.	The process of site selection is described in Chapter 3: Site Selection and Design Evolution.
Questioned the need to develop wind farms away from people?	On Enoch Hill, E.ON has always committed to 1km distance from residential properties. We are also required to consider a wide range of issues relating to noise, landscape and visual impact when designing wind farm proposals.	<p>The following noise impacts associated with the Development have been considered:</p> <p>Construction and operational noise of the Development; and</p> <p>Cumulative noise impacts associated with Development, in conjunction with both other wind farms and other consented, operational and under construction developments along with those for which an application has been submitted.</p>

Community Feedback	E.ON Commitment	EIA Responses
		A high level noise assessment is included in Chapter 7 of the EIA.
Questioned if E.ON would commit to no extension of Enoch Hill?	E.ON believes the proposed turbine layout is the optimum layout within the environmental constraints on site.	N/A
Queried if Enoch Hill is in the East Ayrshire Council area of search for wind farms	It was confirmed that the site is in the East Ayrshire Area of Search. E.ON to provide an East Ayrshire Area of Search map overlaid on top of the E.ON constraints plan for the next meeting.	N/A
Community Liaison Group – 10th September 2014		
A question was raised as to whether the wind was better on the hills.	The wind speeds on the Enoch Hill site are good. The resulting site design was not wholly dependent on wind speeds but was also informed by Community feedback as well as on- site environmental constraints, all of which have dictated the turbine positions.	See Chapter 6: Renewable Energy Policy, Carbon Balance and Peat Management which provides a summary of amount of renewable energy produced by turbines at 130m to tip
A comment was made those 3 turbines in the middle of the wireframe need to be moved because they look a bit linear.	N/A	See Chapter 3: Site Selection and Design Evolution.
A request was made to see a wireframe from Knowtop near a grouping of three houses, where the new substation is proposed.	This was provided at the Community Liaison Group	N/A

Community Feedback	E.ON Commitment	EIA Responses
A request was made for a VP to be shown at the top of the hill near Auchincross, out the back road.	This was provided at the Community Liaison Group	N/A
A request was made for cumulative wireframes.	These were provided as part of the Community Liaison Groups and were also available at the Public Exhibitions	N/A
A request was made for the photomontages shown at the public exhibitions to be as realistic as possible.	There are very strict technical guidelines from Scottish Natural Heritage (SNH) for photomontages and they will be followed to ensure they are as accurate and technically precise as possible.	N/A
Request regarding the possibility to make the turbines slightly darker on the photomontages so that they are more visible.	E.ON committed to talk to consultants regarding this point in time for the Public Exhibitions. These were then provided at Public Exhibitions.	N/A
Concerns raised about the impact on tourism, in particular the impact on local B&B's.	To provide Information relating to these topics in the Environmental Statement.	Chapter 15: Socio-economics. This assessment of the potential impacts of the development on tourism includes considerations of effects on core paths, footpaths, cycleways (including the National Cycle Network) and other less formal routes including changes in the amenity of users (walkers, pedestrians, cyclists and equestrians) as well as any severance or disturbance of these as a result of the construction, operation and decommissioning of the Development.



Community Feedback	E.ON Commitment	EIA Responses
A question was asked about where the wind farm will be connected to the grid.	E.ON has submitted a grid application and a new sub-station will be provided by SPEN at Enoch Hill site. The cables from this on-site sub-station will feed back to New Cumnock sub-station	The grid connection would be considered under a separate application and is not considered in the EIA.
A question was asked regarding why we don't connect onto Ashmark.	E.ON stated that the nearest connection point is New Cumnock	The grid connection would be considered under a separate application and is not considered in the EIA.
A question was asked regarding whether cables would be buried, or whether they could be installed in ditches.	E.ON requires a substation on site in order to connect the 33KV inter-array cable, cabling is usually along the access tracks within the site. The export cable to the Transmission substation may be underground or overhead depending on who will be responsible for it.	See Chapter 3: Site Selection and Design Evolution.
A question was raised about whether there would be a disturbance to the BT link?	E.ON committed that there is a guarantee that if there was a disturbance, E.ON would take responsibility and rectify the problem. BT has been consulted to ensure that our turbines don't interact with their signal.	Telecommunications links are assessed as part of the Environmental Statement. Please see Chapter 16: Infrastructure, Telecommunications and Aviation
<b>Public Exhibitions</b>		
Concerns raised about access on B741/ requested information on whether there will still be a footpath on B741	E.ON has committed that there will be no footpaths removed as part of the development.	N/A
Concerns raised about the effect on	E.ON has worked with the community to identify key	A full landscape and visual assessment can be

Community Feedback	E.ON Commitment	EIA Responses
the landscape	viewpoints that are of most interest and have sought to minimise the visual impact from these key viewpoints. This has been done through a series of Design Workshops	found in chapter 9 of the EIA
Request for more information regarding Afton reservoir installation	Agreed to provide	N/A
Concerns raised about too many applications in the area	As part of the EIA process, cumulative effects will be assessed in relation to wind farms within 35km of the site via the LVIA Assessment	Cumulative effects of wind farms in the, planning, consented and operational stages within 35 km of the Development are considered for as part of the LIVA assessment.
Requested a timetable for turbine delivery that could be published locally.	N/A	A TMP (Traffic Management Plan) will be produced following consent of the Development and will be required as part of the planning conditions. This will consider existing volumes of traffic and commuter routes on the road and an outline of how this will be managed to ensure minimal disruption to surrounding communities and visitors
Request for information on the exact figures for traffic impact on B741, including cumulative impact of all planned developments	N/A	A TMP (Traffic Management Plan) will be produced following consent of the Development and will be required as part of the planning conditions. This will consider existing volumes of traffic and commuter routes on the road and an outline of how this will be managed to ensure

Community Feedback	E.ON Commitment	EIA Responses
		minimal disruption to surrounding communities and visitors
Comment issued that the B741 needs to be widened and resurfaced	N/A	A TMP (Traffic Management Plan) will be produced following consent of the Development and will be required as part of the planning conditions. This will consider existing volumes of traffic and commuter routes on the road and an outline of how this will be managed to ensure minimal disruption to surrounding communities and visitor

### Design Iterations

Please see a table outlining how the key issues raised by stakeholders have, from the outset, fed into the design process for the proposed Enoch Hill Wind Farm.

Design Iteration	Constraints Influencing Layout	Summary of Change
<b>Layout 1</b>	In June 2011 a site boundary was produced which encompassed the area under the Option Agreement between E.ON and the landowners.	N/A
<b>Layout 2</b>	In April 2012, 'hard constraints' such as existing infrastructure, residential properties, watercourses,	23 turbines were placed within the site boundary

Design Iteration	Constraints Influencing Layout	Summary of Change
	roads, public rights of way, etc. were buffered as appropriate (informed by the initial feasibility study) and were taken into account in the design of the initial 23 'feasibility study' turbine layout.	as shown on Figure 3.1.
<b>Layout 3</b>	An initial consultation layout of 40 turbines was produced which took account of hard constraints described above only. This was presented to the Community Liaison Group (CLG) at a meeting held on 2nd July 2014.	An additional 17 turbines were added to Layout 2 and all turbines were moved in relation to hard constraints. The layout is shown on Figure 3.1.
<b>Layout 4</b>	<p>A design workshop was undertaken in July 2014. The hard constraints identified for Layouts 2 and 3 were avoided, with an additional area under a 1km buffer around the B741 avoided to mitigate effects on aviation as agreed with the MoD. While not a hard constraint, a turbine 'avoidance area' at the north of the site was applied in response to feedback obtained as a result of public consultation and Community Liaison Group (CLG) meetings. This constraint was applied to minimise effects on residential properties located to the north of the Development Site.</p> <p>In addition, survey results from the EIA for protected species, noise, vegetation, cultural heritage, peat depth etc. were taken into account and sensitive areas were buffered and avoided as appropriate.</p> <p>The design was optimised from a landscape and visual perspective by examining wireframes from the viewpoints agreed with consultees and turbines were moved to create a balanced and coherent layout.</p>	20 turbines were removed from Layout 3. A 20 turbine design as shown on Figure 3.1 resulted.

Design Iteration	Constraints Influencing Layout	Summary of Change
	<p>A wake separation distance of five rotor diameters in a north–east to south-west direction and three rotor diameters in a north-west to south-east direction between turbines was applied.</p> <p>A 20 turbine layout resulted.</p>	
<b>Layout 5</b>	<p>In October 2014 E.ON Civil and Structures engineers visited the Development Site and minor changes to the location of 4 turbines were made to areas of more favourable topography.</p> <p>In December 2014, one turbine was moved to avoid an area of assessed Groundwater Dependant Terrestrial Ecosystem (GWDTE).</p> <p>A 20 turbine layout was maintained.</p>	<p>Location of five turbines moved slightly.</p> <p>A 20 turbine layout as shown on Figure 3.1 resulted.</p>
<b>Layout 6</b>	<p>A further design workshop was undertaken in January 2015 where the results of wind monitoring which had been undertaken at the site were taken account of to maximise energy yield and efficiency of turbines, while balancing this with the constraints described for previous layouts.</p> <p>The constraints described above were taken account of, along with the results of additional studies that had taken place on topics such as ecology and assessment of groundwater dependant terrestrial ecosystems.</p> <p>The 5 x 4 wake separation distance used for previous</p>	<p>Two turbines were removed from Layout 6. An 18 turbine design as shown on Figure 3.1 resulted.</p>

Design Iteration	Constraints Influencing Layout	Summary of Change
	<p>layouts was increased to a 6 x 4 wake separation orientated in a north to south direction as result of wind monitoring which had been undertaken at the Development Site.</p> <p>An 18 turbine layout resulted.</p>	
<b>Layout 7</b>	<p>A 19 turbine layout was produced in February 2015. This layout resulted from the collaboration of E.ON's wind energy team and Amec Foster Wheeler's Landscape team to produce a revised layout which carefully balanced landscape and visual effects with maximising production of renewable energy.</p> <p>The layout also took into account all the existing physical site constraints as well as considering further insight into the wind regime which had emerged from Layout 7 onwards.</p>	<p>One turbine added to Layout 7 and other turbines moved to increase renewable energy yield and mitigate landscape effects. A 19 turbine layout as shown on Figure 3.1 resulted.</p>
<b>Layout 8</b>	<p>Minor tweaks to Layout 8 resulted in a 19 turbine design freeze layout being produced in March 2015.</p> <p>One turbine was relocated slightly to remove line of sight with Great Dun Fell Radar Station.</p>	<p>Location of one turbine moved slightly.</p> <p>A 19 turbine layout as shown on Figure 3.1 resulted.</p>

## Appendix I – Newsletters

October 2014

# Enoch Hill Wind Farm



For illustrative purposes only.

As you may know we're planning to develop a wind farm called Enoch Hill to the south west of New Cumnock in East Ayrshire. We've put this newsletter together to bring you up to date with our plans and our progress so far.

Scotland has the potential to lead the way when it comes to renewable energy and has set the ambitious target of generating the equivalent of 100% of its electricity from renewable sources by 2020. We're helping reach that target. In Scotland we currently operate three onshore wind farms. We also operate an offshore wind farm and a dedicated biomass power station.

### Our progress so far

Since we first introduced you to the Enoch Hill Wind Farm proposal in November 2012 we've been working hard to move the project forward.

- In April we installed two meteorological (met) masts on site which we've been using to collect information about the wind and other weather related data. This data will help us identify the best areas to place turbines within the site.
- After receiving scoping responses from key statutory consultees on what should be included in our formal studies, our independent consultants have continued doing studies that will form part of our Environmental Impact Assessment (EIA). Results from these studies so far have helped us identify several key constraints which will influence where the turbines can go.
- We've also installed noise monitoring equipment on some of the properties near to the site. We'll use the background noise data that we've collected to model what the predicted noise from the wind farm could be so that we can make sure we're good neighbours and stay well within accepted noise limits.

### Using your views

We've held public information days, set up a Community Liaison Group, and held design workshops so that we can understand the views of the community and incorporate them into our plans.

Here are some of your comments and how we've responded:

You were concerned about the visibility and proximity of the site from New Cumnock

We've drawn a line across the northern section of the site and committed to no turbines being placed above this line, which is approximately 1.5km from the nearest residential dwelling.

You were concerned about the combined environmental impact of wind farms in the area

As part of our EIA, we'll consider all wind farms within 35km of the site, whether they are consented, constructed, operational or in the planning system.

You were concerned about the delivery route of the turbines and the times of delivery

We've committed that they will be delivered outside peak traffic periods, when there is less traffic on the roads, to allow for as little disruption as possible.

You wanted to know what the project would look like from Viewpoints that were important to you

We provided wireframes from specific properties, and sought advice on view points from East Ayrshire Council and New Cumnock Community Council. We will continue to listen to the concerns of the community.

### Consulting with the local community

Based on the feedback we've got from the community and the results from our studies and assessments we've developed an initial layout that we'd like to consult on.

The Public Exhibitions are your opportunity to meet the team, view our plans in more detail, see how the wind farm could look, and share your views with us.

We'd like to hear what you think and any questions, concerns or suggestions you might have.

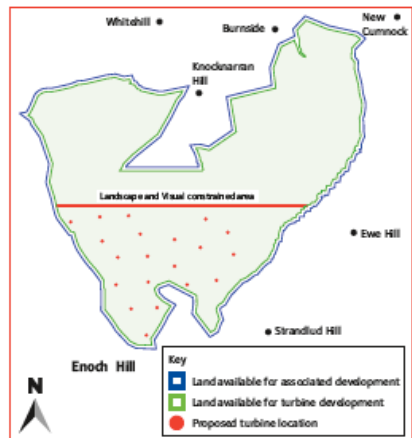


E.ON Climate & Renewables UK Ltd  
Registered address: Westwood Way, Westwood Business Park, Coventry CV4 8LG.  
Registered in England and Wales No. 258475.

### We're planning to hold two sets of Public Exhibitions:

**Date:** Tuesday 7th October  
**Place:** Dalmellington Community Centre, Ayr Road, Dalmellington, KA6 7SJ  
**Time:** 4 to 8pm

**Date:** Wednesday 8th October  
**Place:** New Cumnock Community Centre, The Castle, New Cumnock, KA18 4AH  
**Time:** 4 to 8pm



### Get in touch

**Post**  
Freepost RRSE-KZCU-AZJL  
E.ON  
Westwood Way  
Westwood Business Park  
Coventry CV4 8LG

**Email**  
swscotland@eon.com

**Phone**  
Freephone 0800 096 1199

Updates on the proposal are also available on our website at: [eonenergy.com/enochhill](http://eonenergy.com/enochhill)



## Appendix II –Public Information Day Materials

### Press Coverage

Cumnock Chronicle  
17<sup>th</sup> October 2012

# Further turbines proposed for Cumnock and Doon Valley

THREE new windfarm proposals have been unveiled by energy company **E.ON** which could see 78 new turbines built around the New Cumnock and Dalmellington areas.

The company hope to built 27 turbines at Benbrack, between Dalmellington and Carsphairn, 23 turbines at Enoch Hill, south of the road between New Cumnock and Dalmellington and 28 turbines at Lorg, 10km south of New Cumnock in Dumfries and Galloway.

**E.ON** claim that if all three sites are built they will have an operating capacity of around 234MW.

They are launching a series of public consultation events in November to allow local people the chance to see the plans and to give their views on the proposals.

The company will send details of the development to all homes within 15km of the sites - which will include New Cumnock and Dalmellington, as well as Sanquhar, Kirkconnel, Kelloholm and Cumnock.

Nick Taylor, Project Developer at **E.ON** said: "The aim of this activity is to keep the local community informed about our future plans and allow residents ample opportunity to get involved and have their say.

"These events are just the beginning of a much longer and more in-depth series of activity with the local community.

#### CONSULTATIONS

"We genuinely want to design wind farms which work for **E.ON**, the local community and will help Scotland achieve its renewable energy targets.

"It's very early days for these sites, but as an experienced and responsible developer we want to ensure that the local community have their views considered throughout the development of any wind farm."

**The public consultation events will be held at:**

**Tuesday, November 6, 4pm - 8pm -**  
**Lagwyne Hall, Carsphairn**  
**Wednesday, November 7, 4pm - 8pm -**  
**New Cumnock Community Centre**  
**Wednesday, November 14, 4pm - 8pm -**  
**Hillview Leisure Centre, Kelloholm**  
**Thursday, November 15, 4pm - 8pm -**  
**Dalmellington Community Centre**

Anyone unable to attend an event, but interested in discussing the sites should call 0800 096 1199, email [SWSScotland@eon-uk.com](mailto:SWSScotland@eon-uk.com) or visit [www.eon-uk.com/swscotland](http://www.eon-uk.com/swscotland).

Nick Taylor added: "When we're developing a wind farm we spend a lot of time choosing the right site, considering all kinds of things like how it will affect people living nearby, as well as the landscape and wildlife.

"We also work closely with the local authority and stakeholders throughout the development process.

"Because there's a lot to think about and explore, the details of each wind farm may change through the planning process."

## **E.ON out to win hearts and minds after unveiling plan for 234MW of wind farms**

**KARL-ERIK STROMSTA**

**E.ON** has proposed three wind farms totalling up to 234MW in southwest Scotland, and launched a charm offensive to counter vocal resistance by some local councils.

The utility underscored its intention to “keep the local community informed” and “involved” as it unveiled plans for the Benbrack, Enoch Hill and Lorg wind farms – ranging from 69-84MW of capacity in Dumfries and Galloway, and East Ayrshire.

Acknowledging it is “very early days”, project developer Nick Taylor emphasises that **E.ON** intends to “ensure that the local community have their

views considered throughout the development”.

**E.ON** aims to send detailed proposals to all residents within 15km of the sites, and will host a number of information sessions over the coming weeks.

Dumfries and Galloway has become a battleground for Scotland’s onshore wind ambitions, with the region’s representative in the UK Parliament, Russell Brown – a member of the Labour Party and a supporter of renewables – emerging as an unlikely champion for local anti-wind groups.

This week, Brown accused the Scottish government of being “in denial” about the impact

of turbines on communities.

Some 1,000 turbines are in the planning stage in the Dumfries and Galloway region. Brown says the government’s insensitivity on the issue is “turning previous supporters of wind energy against it”.

Rejections of several wind applications by local councillors in Dumfries and Galloway have been overturned by the Scottish government this year. The government counters that it upholds two thirds of rejections of applications at the local level.

**84MW**  
The biggest planned wind farm

**New wind**  
Eon has proposed three new onshore windfarms in southwest Scotland. The potential sites are Benbrack, in Dumfries and Galloway; and Enoch Hill and Lorg, in East Ayrshire. They would have capacities of 81MW, 69MW and 84MW, respectively.

## Exhibition Boards

# Benbrack, Enoch Hill and Long Wind Farms

Thank you for coming along today and welcome to our information session, designed to tell you more about our plans for three wind farms in the area.

We'd like to share our early ideas with you and the steps we'll follow, so you can tell us what you think and have your say from the word go, including:

- our plans so far
- how you can comment on our plans
- what will happen next.

Our plans for the wind farms are at a very early stage and we won't be applying for planning permission for a while. We still have lots of studies to finish but we'd like to know what you think of our ideas so far. Your views will help us shape our plans so that the wind farms are right for everyone.



## Who are we?

Five million people get their electricity and gas from E.ON at home and at work - making us one of the top energy companies in the UK. As part of the E.ON Group, we're also one of the world's top energy companies. We want to be a company you can trust and we're always looking at ways to make energy cleaner. We have 19 onshore and 3 offshore wind farms, producing more than 400 megawatts (MW) of renewable electricity.

## E.ON in Scotland

Scotland has the potential to lead the way when it comes to renewable energy and has been set the ambitious target of generating the equivalent of 100% of its electricity by 2020. We're helping to reach that target.

We currently operate three onshore wind farms, one offshore wind farm, a dedicated biomass power station at Steven's Croft, Lockerbie and we're also exploring the exciting potential of marine energy. We're developing a number of renewable energy projects across Scotland, including the three new wind farms in south-west Scotland that we're telling you about today.

South-west Scotland is a great place for onshore wind farms as it has plenty of wind, excellent transport links and good connections to the electricity grid - making it easy to get electricity from our wind farms to homes and businesses.



## Why do we need wind farms?

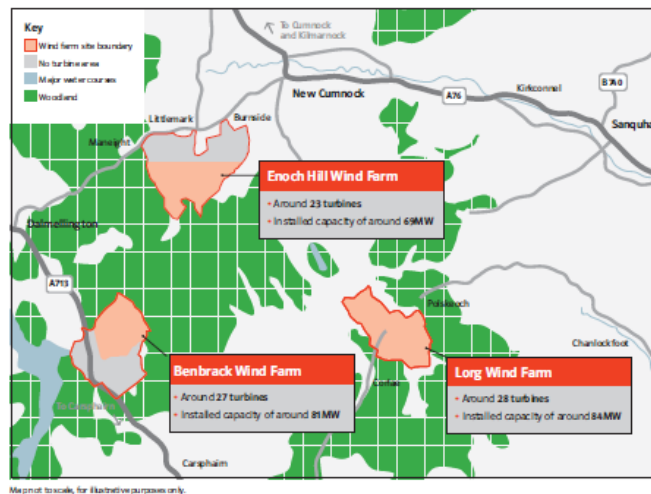
Over the next 10 years, many of the UK's older coal-fired and nuclear power stations will close, so we need to plan ahead and find new ways of making the energy people need. The UK is one of the windiest countries in Europe, so it makes sense to make the most of this great natural resource. Using renewable sources of energy will help us reduce our impact on the environment too.

## But wind farms aren't the only answer

As well as wind, we use biomass and are testing wave power. We're also looking at cleaner, better ways to use traditional fuels like gas and coal. For instance, at our new Grain gas/combined heat and power plant in Kent, surplus heat is used by National Grid's neighbouring Liquefied Natural Gas (LNG) plant, saving around 350,000 tonnes of carbon dioxide (CO<sub>2</sub>) a year.

## Where would the wind farms be?

Here is a map showing the three new sites that we're considering. We thought it would be better to talk to you about all three at once, so you can find out more about them all in one session.



## The Environmental Impact Assessment (EIA)

We have lots of studies to do before we apply for planning permission to build the wind farms. First, we need to ask some key organisations such as Scottish Natural Heritage, the local authorities and the Royal Society for the Protection of Birds what they would like us to study - this is called scoping and it tells us what the important environmental issues are at our sites.

After scoping, we'll be carrying out lots of studies to see what the wind farms' effects will be on people and the environment. We'll use these studies to help us design the wind farm and to understand what we'll need to do to reduce our impact on the environment.

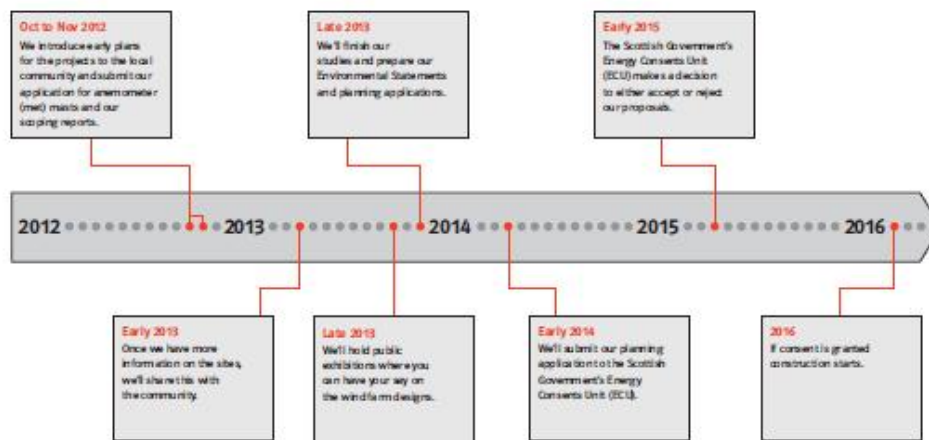
### The EIA will look at:

- how the wind farms will change the landscape and local views
- the natural environment and wildlife
- nearby roads and railways, including impact on traffic
- waterways, including streams, rivers and reservoirs
- mobile phone signals
- aviation issues, including the safety of aircrafts flying overhead and radar
- archaeology and cultural heritage at the site and in the local area
- noise
- shadow flicker - the impact of shadows created by the turbines.



## Where are we now?

Our plans for all three wind farms are at a very early stage. We've done some early studies, which have shown that the sites we've chosen are good places for wind farms but we don't have all the answers yet. We'll continue to share our plans with you as we finish more studies and learn more about each site.





## Have your say

It would be great to know what you think of our plans so far, and to hear your ideas and suggestions for improving them. Where we can, we'll include your feedback when we design the wind farms.

You can have your say by filling in a comment card or by talking to one of our team. Alternatively, you're welcome to get in touch with us at any time. We'll come back to you with more information on these sites early next year.

**Call** us free on 0800 096 1199 - we're available from 9am to 5pm, Monday to Friday.

**Email** [swscotland@eon-uk.com](mailto:swscotland@eon-uk.com)

**Write** to our freepost address, you won't need a stamp:

South-west Scotland onshore wind  
Freepost RRSE-KZCU-AZJL  
E.ON  
Westwood Way  
Westwood Business Park  
Coventry  
CV4 8LG



# Lorg Wind Farm

<b>Turbines</b>	Around 28
<b>Megawatts</b>	Around 84MW

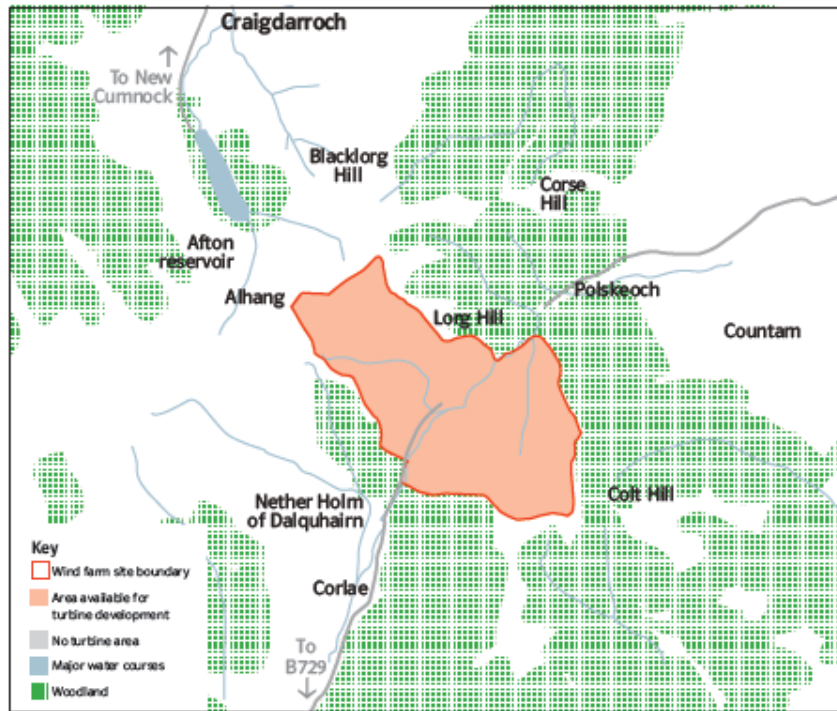
Your contact for Lorg Onshore Wind Farm is Ann-Marie Attfield. Why not have a chat to her today, or get in touch:

Email: [swscotland@eon-uk.com](mailto:swscotland@eon-uk.com)

Call: 0800 069 1199

# Log Onshore Wind Farm

Site layout map



Map not to scale, for illustrative purposes only

# Benbrack Wind Farm

**Turbines**      Around 27  
**Megawatts**    Around 81MW

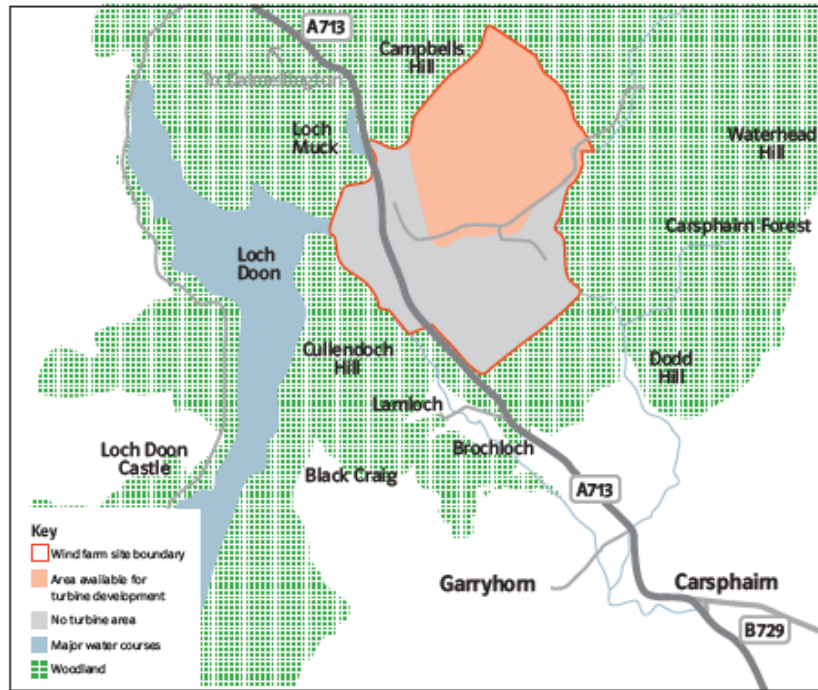
Your contact for Benbrack Onshore Wind Farm is Lucy Morgan. Why not have a chat to her today, or get in touch:

Email: [swscotland@eon-uk.com](mailto:swscotland@eon-uk.com)

Call: 0800 069 1199

# Benbrack Onshore Wind Farm

Site layout map



Map not to scale, for illustrative purposes only.

# Enoch Hill Wind Farm

**Turbines**            Around 23  
**Megawatts**        Around 69MW

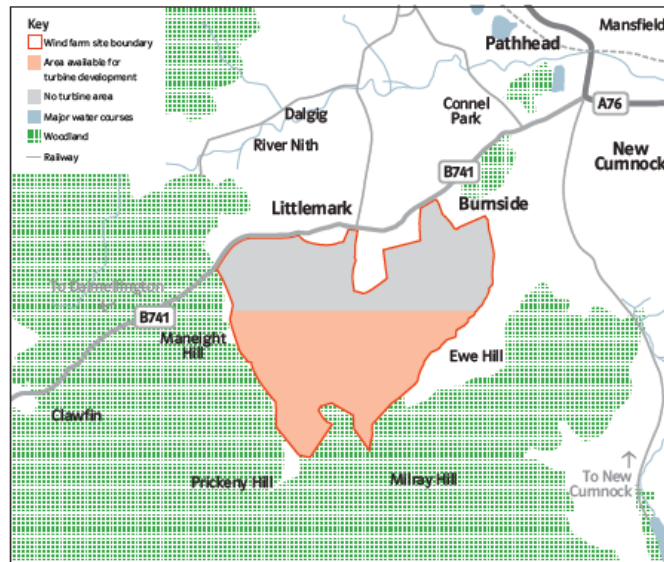
Your contact for Enoch Hill Onshore Wind Farm is Simon Lejeune. Why not have a chat to him today, or get in touch:

**Email: [swscotland@eon-uk.com](mailto:swscotland@eon-uk.com)**

**Call: 0800 069 1199**

# Enoch Hill Onshore Wind Farm

Site layout map



Map not to scale, for illustrative purposes only

## Poster for Public Information Days



**E.ON in south-west Scotland –  
have your say on Benbrack,  
Enoch Hill and Lorg Wind Farms**

We'd like to share our plans for three possible new wind farms in your area, so you can see what we've got in mind and tell us what you think.  
You're welcome to come along to any of our public events below, to see our early ideas, ask us questions and find out more about us.

We look forward to meeting you at:

**Lagwyne Hall, Carsphairn**  
Tuesday 6 November  
From 4pm to 8pm

**New Cumnock Community Centre**  
Wednesday 7 November  
From 4pm to 8pm

**Hillview Leisure Centre, Kelloholm**  
Wednesday 14 November  
From 4pm to 8pm

**Dalmellington Community Centre**  
Thursday 15 November  
From 4pm to 8pm

You can also get in touch with us at any time about the wind farms.  
Call us free on 0800 096 1199  
or email [swscotland@eon-uk.com](mailto:swscotland@eon-uk.com)

Alternatively, you can write to us at our freepost address, so you won't need a stamp:  
South-west Scotland onshore wind  
Freepost RRSE-KZCU-AZJL  
E.ON  
Westwood Way  
Westwood Business Park  
Coventry  
CV4 8LG

E.ON Climate & Renewables UK Developments Ltd  
Registered Office: Westwood Way, Westwood Business Park, Coventry CV4 8LG  
Registered in England and Wales No. 3933467



### Posters were placed in the following locations:

Dalmellington Community Centre, Primary School, Employability Centre, Local Council Office, Doon Academy, Doon Valley Leisure Centre, Economic Development Office, Doon Valley Museum, The Zone & Library

Bellsbank Primary School, Nursery & Family Centre, Community Centre

Carsphairn Lagwyne Hall, Carrick's Tea Room, Primary School

Sanquhar Library, Local Council Office, The Sweetie Box, Sanquhar Academy

Kirkconnel Vanity Beauty Therapy, Station 49, Community Learning Centre, Post Office, Kirkconnel Heritage Society

Kelloholm Hillview Leisure Centre, Primary School, Local Council Office, Mill Hill Centre, Social Work Office

New Cumnock Community Centre, Local Council Office, Library, New Cumnock Working Men's Club, Primary School, Nursery School

## Appendix III – Public Exhibition Materials

### Questionnaire



### Enoch Hill Wind Farm Proposal

1. To what extent do you feel you have been informed about the wind farm and believe that you have had the opportunity to feedback on our plans?

- Very well
- Well
- Neither well nor poor
- Poor
- Very poor

What could we do better?

---

---

2. What do you think of the proposed layout for Enoch Hill Wind Farm?

- I like it
- I'm satisfied that it takes into account key sensitivities in the area
- I'm neutral
- I don't like wind farms in general
- I have specific concerns about this wind farm; for example concerns about specific turbines (please state)

---

---

---

3. Do you have any comments on our proposed delivery route? Is there anything you'd like to see included in our traffic management plan?





If you have any further comments please use the box below.

Thank you for completing our survey.

If you'd like to be kept up-to-date on the progress of the project, please give us your contact details.

Name: \_\_\_\_\_

Address: \_\_\_\_\_

Email: \_\_\_\_\_

You can return this questionnaire by post to:

Freepost RRSE-KZCU-AZJL  
Enoch Hill Wind Farm  
Westwood Way  
Westwood Business Park  
Coventry  
CV4 8LG

Or email us at:

[swscotland@eon.com](mailto:swscotland@eon.com)

More information is available online at:

[eonenergy.com/enochhill](http://eonenergy.com/enochhill)

## Exhibition Boards

# Welcome

And thanks for coming along today to our public exhibition.

We'd like to show you our plans, so you can see what we've got in mind and tell us what you think.

**However you feel about wind farms, your opinion really does matter to us.**

We haven't applied for planning permission to build the wind farm yet because we want to find out what you think first. What you tell us will help shape our plans.



## Who are we?

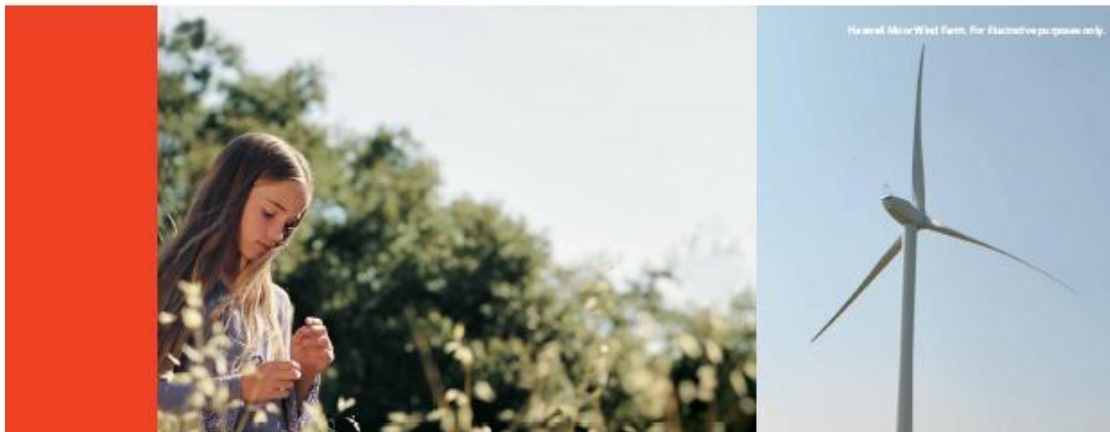
Five million people get their electricity and gas from us at home and at work, making us one of the top energy companies in the UK. As part of the E.ON Group, we're also one of the top energy companies in the world. We want to be a company you can trust and are always looking at ways to make energy cleaner. We have 20 onshore and three offshore wind farms, producing more than 400 megawatts (MW) of renewable electricity.

### Why do we need wind farms?

Over the next 10 years, many of the older coal-fired and nuclear power stations in the UK will close, so we need to plan ahead and find new ways of making the energy people need. The UK is one of the windiest countries in Europe, so it makes sense to make the most of this great natural resource. Using renewable sources of energy will help us reduce our impact on the environment too.

### But wind farms aren't the only answer

As well as wind we use biomass and we're also looking at cleaner, better ways to use things like gas, coal and nuclear. For instance, by capturing and storing the CO<sub>2</sub> that's produced in the generation process.



## Why Enoch Hill?

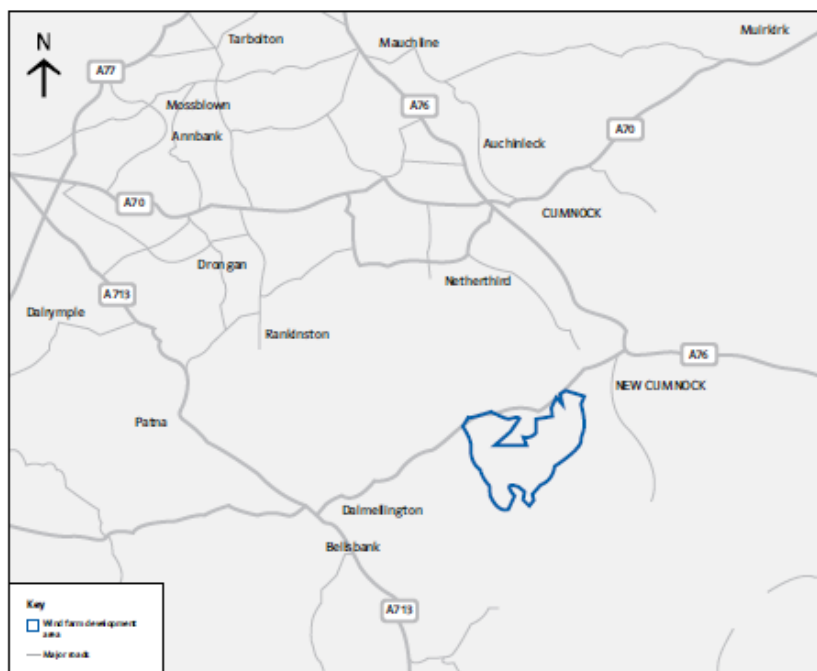
We spend a lot of time choosing the best sites for our wind farms and look very carefully at a wide variety of possible places around the UK before making a decision. As part of this, we also explore how our plans would affect local people, landscapes, birds, animals and plant life.

We chose the Enoch Hill Wind Farm site after our early studies showed the area's wind resources and connections to the national electricity network make it a good place for a wind farm.

At the moment, we believe the site could accommodate between 20 and 23 wind turbines, capable of generating between 68MW and 78.2MW of electricity, depending on the turbine model we choose.

That means in a typical year\*, based on 23 wind turbines, the wind farm could generate enough renewable energy to power over 42,200 homes† and save over 76,763 tonnes of CO<sub>2</sub>‡.

We also work closely with communities and relevant organisations to make sure our wind farms have a minimal impact on the environment, wildlife and those living nearby.



\* A typical year of generation is based on the conservative industry capacity factor of 26.06%.

† Based on an average household electricity consumption of 4,229kWh. Source DECC.

‡ Based on the Government's long-term marginal plant figure of 44kg CO<sub>2</sub>/MWh.

## Our studies

We've worked closely with relevant national and local organisations, such as Scottish Natural Heritage (SNH) and East Ayrshire Council to make sure our environmental studies include everything they need to.

Our independent environmental consultants have carried out a range of studies to see what impact the wind farm could have on the environment. So far, our studies have shown there are several things we need to think about when it comes to working out where the turbines should go, including the terrain, landscape and birds.

We'll include the results of all our studies in our Environmental Impact Assessment (EIA), as part of our planning application, which will be available to view at various places within the local community.

Back in April, we installed two meteorological (met) masts on the site, which we've been using to collect information about the wind and weather. This information will help us find the best place to put the turbines.

We're also using noise monitoring equipment to see if noise from the wind farm could potentially affect people living close to the site. From this, we'll be able to design the wind farm to make sure we're a good neighbour and stay well within noise limits.

### **How the wind farm could look**

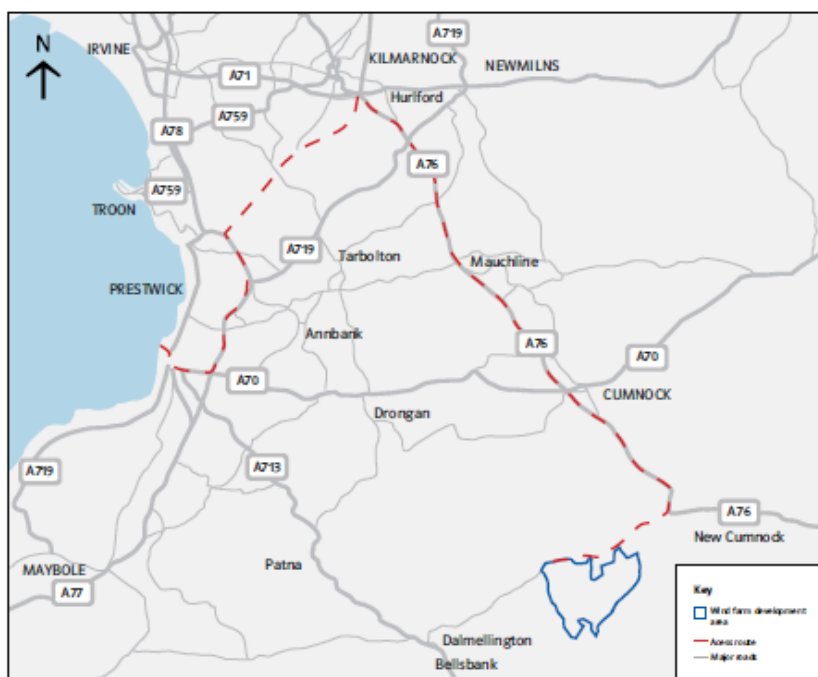
Thanks to feedback we've had from the local community and the results of our studies so far, we've developed a suggested layout for the wind farm, showing where the turbines could go.

We've also produced visuals so you can see what this layout would look like from key viewpoints suggested by local people. We're keen to hear what you think of our plans along with any questions, concerns or suggestions you may have.



## Bringing the turbines to site

We've worked out a possible route for bringing the wind turbines to the site, which can be difficult because of their size. You can see the route on the map below.

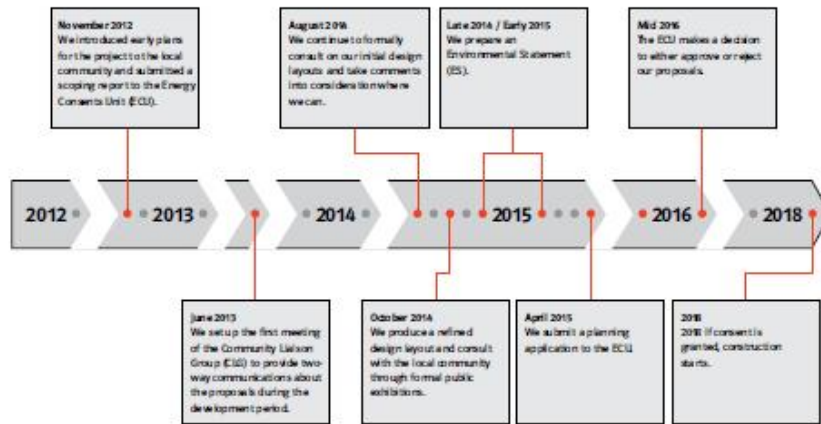


We plan to ship the wind turbines into Ayr Harbour and then transport them by road along the A77 to Kilmarnock and the A76 through New Cumnock. They'll then go along the B741 to the site. Where we can, we'll use local companies with experience of transporting turbine components.

We realise that any deliveries would have an effect on the surrounding community so we would like to hear your views on the route we've got in mind. We would also like your feedback on things like the timing of turbine deliveries and speed restrictions on heavy goods vehicles near the wind farm site.

This way we can put together a traffic management plan that addresses concerns and minimises the potential impact on the local community.

## Project timetable



Indicative timetable, subject to change.

### Application for consent

As the Enoch Hill Wind Farm could have an installed capacity of more than 50MW, we need to apply directly to the Scottish Government (Energy Consents Unit).

However the application will still go through the normal planning process, to ensure that statutory consultees like the East Ayrshire Council play a vital role in informing the Scottish Government's final decision.



## How we've listened

From the outset we've tried to ensure that the local community have had opportunities to help inform and provide feedback on our proposals. We've held public information days, set up a Community Liaison Group and involved local people and organisations in design workshops so we can understand your views and concerns to consider them in our plans.

Here are some of the things you've told us, and what we're doing as a result:

You said	We did
You were concerned about the visibility and proximity of the site from New Cumnock.	We've drawn a line across the northern section of the site and are committed to not placing turbines above this line, which is approximately 1.5km from the nearest residential dwelling.
You were concerned about the combined environmental impact of wind farms in the area.	As part of our EIA, we'll consider all wind farms within 35km of the site, whether they're consented, constructed, operational or in the planning system.
You were concerned about the delivery route of the turbines and the times of delivery.	We've committed that they'll be delivered outside peak traffic periods, when there's less traffic on the roads, to allow for as little disruption as possible.
You wanted to know what the project would look like from viewpoints that were important to you.	We provided some wireframes from specific properties, sought advice on viewpoints from East Ayrshire Council and New Cumnock Community Council, and will continue to listen to the concerns of the community.





## What happens next

In the coming months we'll be finishing off our bird surveys and peat studies as well as our wind and other environmental assessments. The results, along with your feedback will help us finalise the best layout for the wind farm.

The next step will then be to submit our planning application. Once we've made our planning application, anyone with an interest or concern will have the chance to get in touch with East Ayrshire Council, or the Scottish Government, to comment formally on our proposal. At that time we'll let you know where you can view our application and how and when you can make comments.



## Working with your community

We want to be a good neighbour and believe that involving local people from the outset of our plans is the best way to make sure the wind farm is sensitively designed and brings benefits to the area. That's why we've set up a Community Liaison Group to represent your views and we'll be working closely with the group throughout the planning process and beyond. If the wind farm goes ahead, we'll make an effort to use local companies wherever we can.

We'll also set up a Community Benefit Fund and contribute up to £391,000 a year to support local community projects, throughout the wind farm's lifetime. That's around £5,000 for every MW of renewable electricity we generate.

We'd love to know how you think a Community Benefit Fund could help your area and how it should work. For example, at our Rosehall Wind Farm in Sutherland, Foundation Scotland manages the fund, with a panel of local people deciding how the money should be spent. But how we do things here is up to you. Getting involved with our Community Benefit Fund won't affect your right to have your say on our planning application at any time, whether you support the wind farm or not.



## Have your say

Your views are important to us and we welcome your comments on the Enoch Hill Wind Farm or any specific aspects of the project.

To give us your feedback, you can get in touch with us by freepost, email or freephone.

Enoch Hill Wind Farm  
Freepost RRSE-KZCU-AZJL  
E.ON  
Westwood Way  
Westwood Business Park  
Coventry CV4 8LG

[swscotland@eon.com](mailto:swscotland@eon.com)

Freephone

**0800 096 1199**

We're here from 9am to 5pm, Monday to Friday.

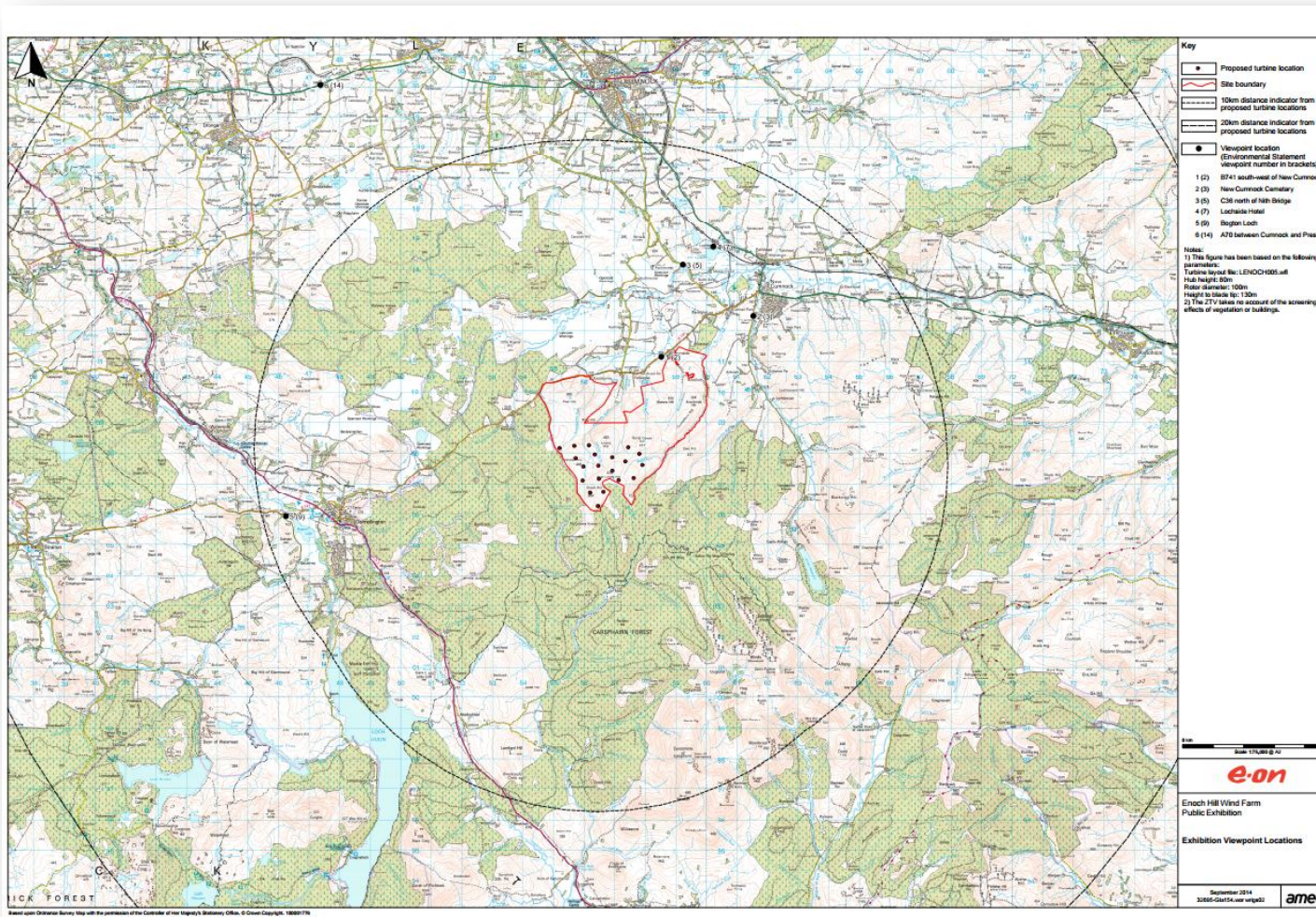
To keep up with the latest news from the wind farm, visit:

[eonenergy.com/enochhill](http://eonenergy.com/enochhill)

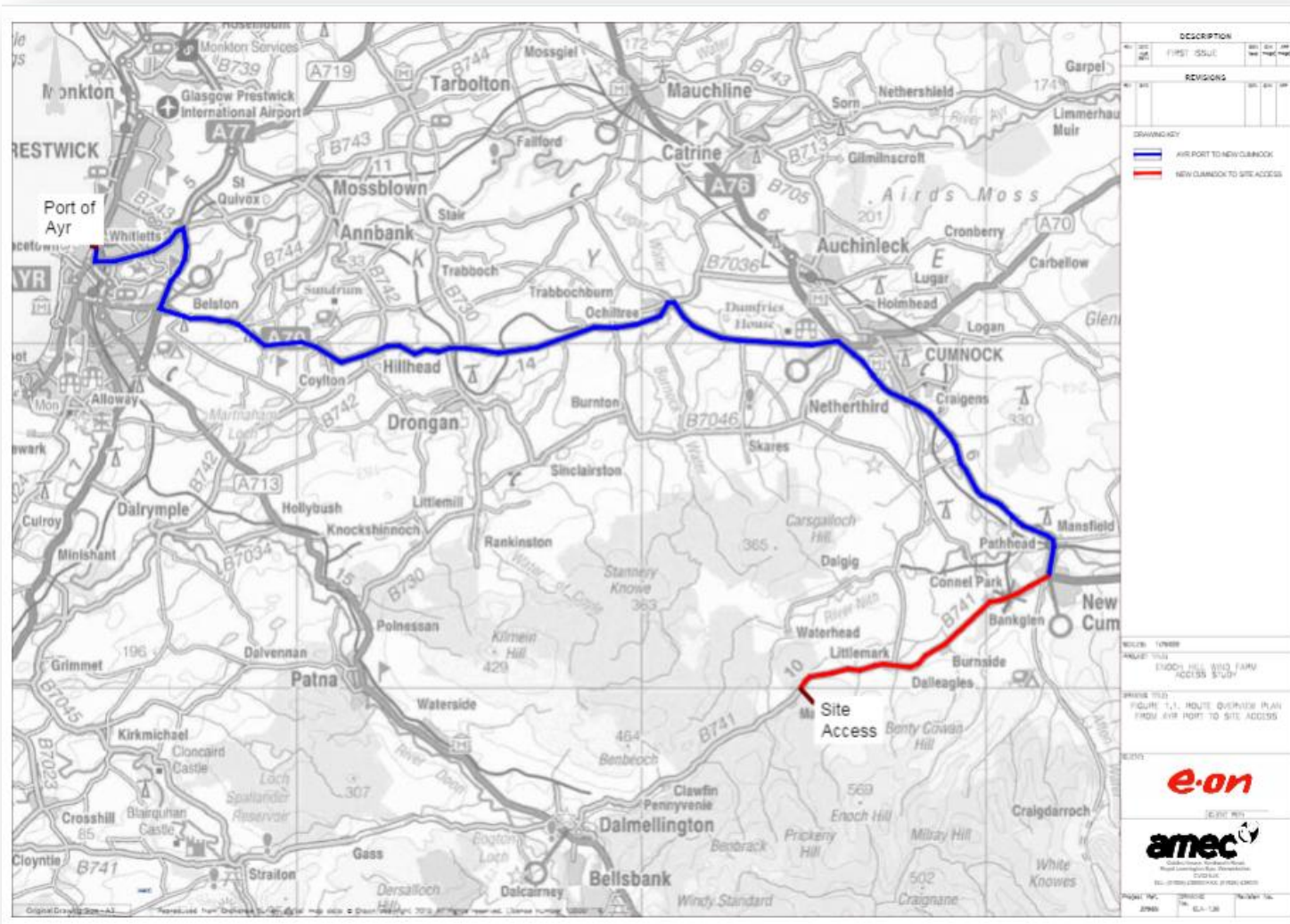


## Maps on display at Public Exhibitions

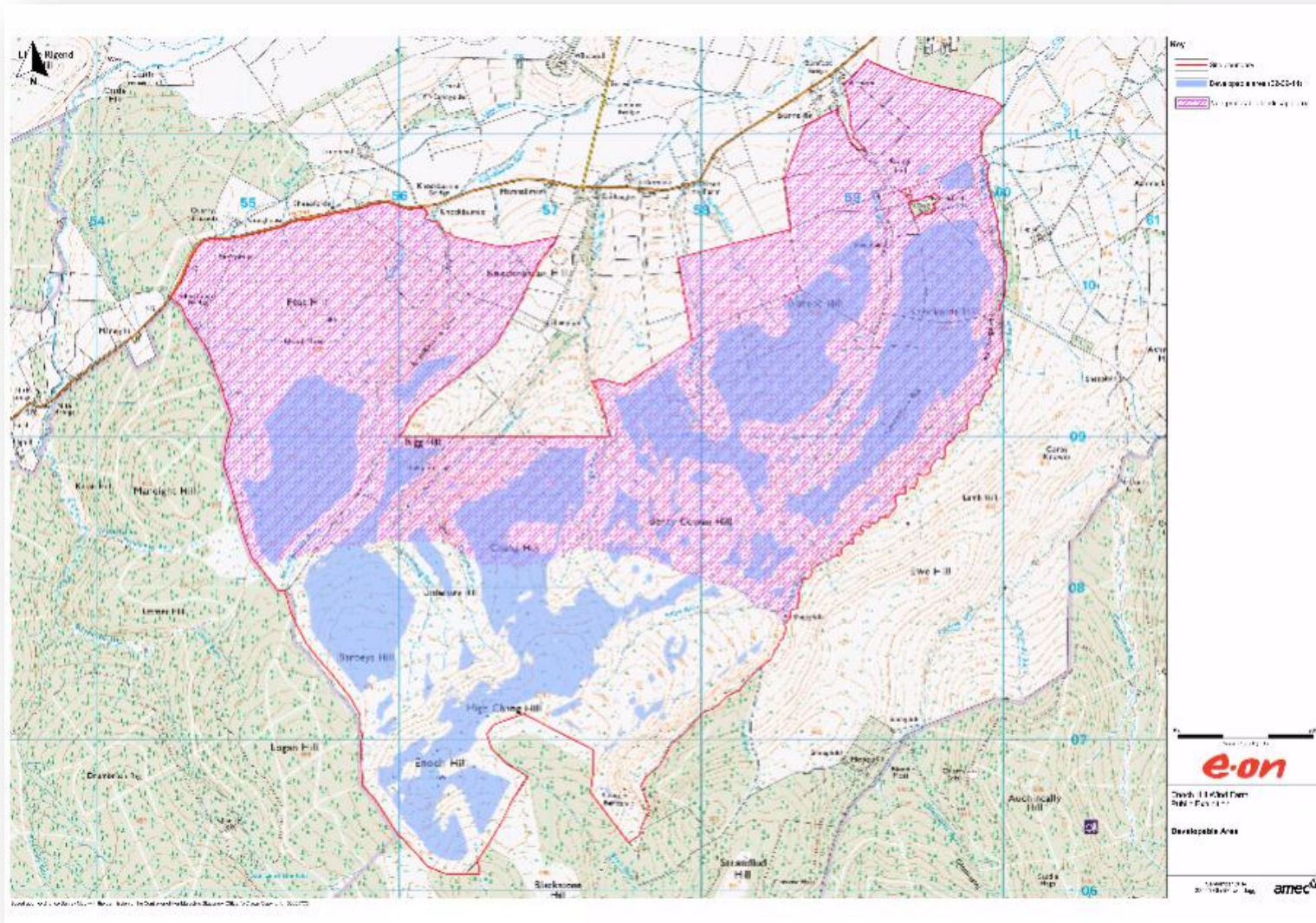
### Zone Theoretical Visibility



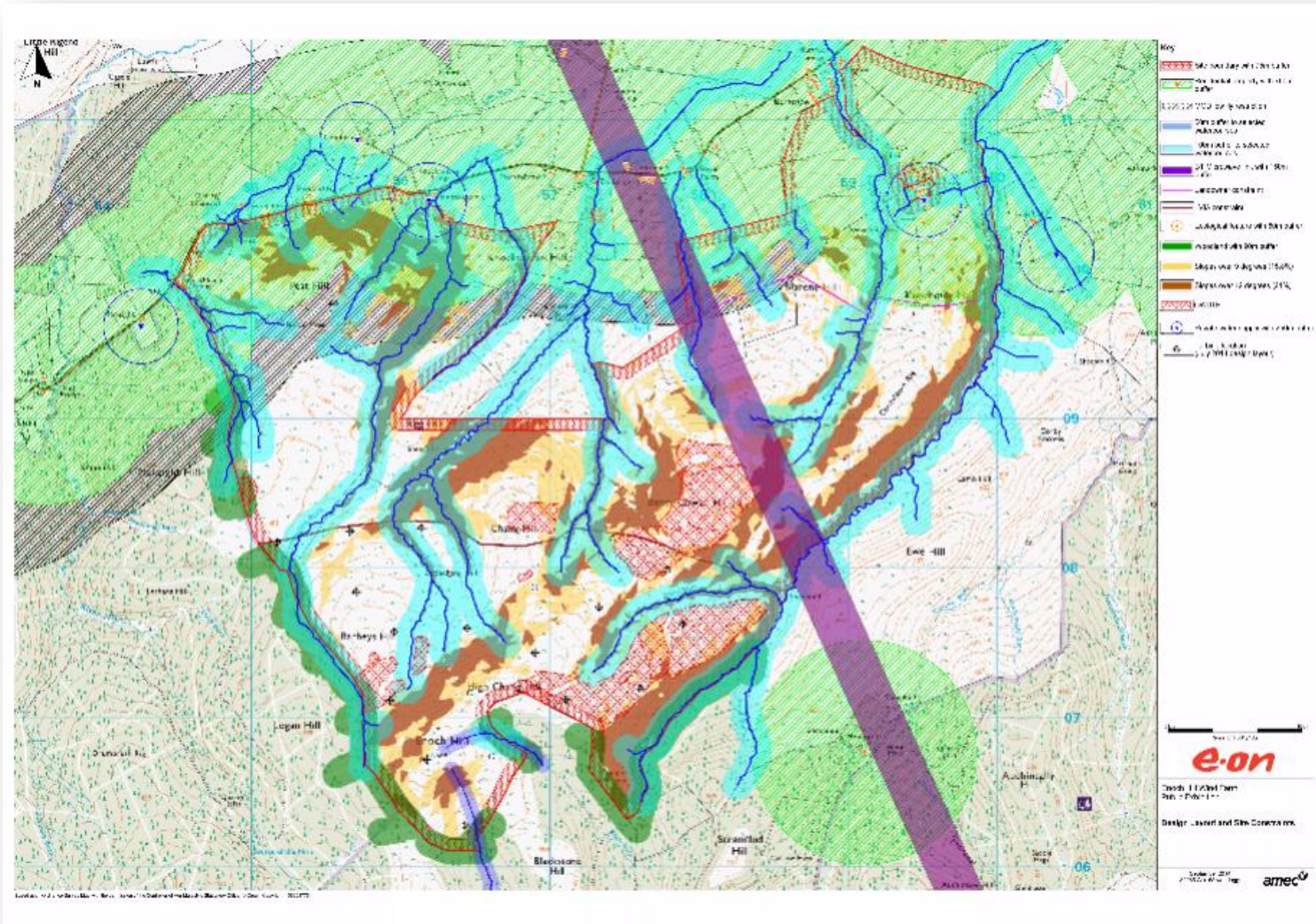
## R2 GLA-130 Route Overview Plan



## Developable Area



## Constraints and Layout



Photomontages on display at Public Exhibitions



Viewpoint 1: B741, South-West of New Cumnock - Existing View



Viewpoint 1: B741, South-West of New Cumnock - Photomontage of Enoch Hill Wind Farm



OS reference:	E258 511, N611 157	Horizontal field of view:	53.5° (planar projection)	Camera:	Canon EOS 5D Mark II
Eye level:	209.5m AOD	Principal distance:	812.5mm	Lens:	EF50mm f/1.4 USM
Direction of view °:	209°	Paper size:	1189 x 840mm (A0)	Camera height:	1.5m AGL
Nearest turbine:	3.2km	Correct printed image size:	820 x 260mm	Date and time:	11/06/2014 12:07

**Notes:**  
 1) Direction given as bearing relative to Grid North (GN).  
 2) The turbines in this figure have been based on the following parameters: Turbine layout file: L110CH0800.rvt - Hub height: 80m - Rotor diameter: 100m - Height to blade tip: 120m  
 3) The photomontages aim to provide a realistic representation of the proposed development, based on the current information and methodology. The turbine positions illustrated may be subject to a subsequent variation.



**Viewpoint 1 (ES Viewpoint 2):  
 B741, South-West of New Cumnock**

Drawn by: hofls	Map Scale: 1:50,000	Paper Size: A0
Date: Sept 2014	Drawing No: 32565-Gla156	amec

Reproduced by permission of Ordnance Survey on behalf of HMSO. © Crown copyright and database right 2010. All rights reserved. Ordnance Survey Licence number: 10007890.





Viewpoint 2: New Cumnock Cemetary - Existing View



Viewpoint 2: New Cumnock Cemetary - Photomontage of Enoch Hill Wind Farm



OS reference:	E261 523, N612 494	Horizontal field of view:	53.5° (planar projection)	Camera:	Canon EOS 5D Mark II
Eye level:	211.5m AOD	Principal distance:	812.5mm	Lens:	EF50mm f/1.4 USM
Direction of view °:	221°	Paper size:	1189 x 840mm (A0)	Camera height:	1.5m AGL
Nearest turbine:	5.9km	Correct printed image size:	820 x 260mm	Date and time:	11/06/2014 11:39

Notes:  
 1) Direction given as bearing relative to Grid North (GN02).  
 2) The turbines in this figure have been based on the following parameters: Turbine layout: Six LENOCHHILLF01 - Hub height: 80m - Rotor diameter: 100m - Height to blade tip: 120m  
 3) The photomontage aims to provide a realistic representation of the proposed development, based on the current information and methodology. The turbine positions illustrated may be subject to a succeeding condition.

**Viewpoint 2 (ES Viewpoint 3):  
New Cumnock Cemetary**

Drawn by: holls	Map Scale: 1:50,000	Paper Size: A0
Date: Sept 2014	Drawing No: 32965-Gla156	amec

Reproduced by permission of Ordnance Survey on behalf of HMGO. © Crown copyright and database rights 2012. All rights reserved. Ordnance Survey Licence number 100027850



Viewpoint 3: C36 North of Nith Bridge - Existing View



Viewpoint 3: C36 North of Nith Bridge - Photomontage of Enoch Hill Wind Farm



OS reference:	E259 217, N614 171	Horizontal field of view:	53.5° (planar projection)	Camera:	Canon EOS 5D Mark II
Eye level:	213.5m AOD	Principal distance:	812.5mm	Lens:	EF50mm f/1.4 USM
Direction of view °:	211°	Paper size:	1189 x 840mm (A0)	Camera height:	1.5m AGL
Nearest turbine:	6.2km	Correct printed image size:	820 x 260mm	Date and time:	11/06/2014 11:09

**Notes:**  
 1) Direction given as bearing relative to Grid North (GN04).  
 2) The turbines in this figure have been based on the following parameters: Turbine layout file: LENOCHHILL.WFL - Hub height: 80m - Rotor diameter: 100m - Height to blade tip: 130m  
 3) The photomontages aim to provide a realistic representation of the proposed development, based on the current information and methodology. The turbine positions illustrated may be subject to a final planning condition.

Reproduced by permission of Ordnance Survey on behalf of HMSO. © Crown copyright and database rights 2012. All rights reserved. Ordnance Survey Licence number 100077856

**Viewpoint 3 (ES Viewpoint 5):  
C36 North of Nith Bridge**

Drawn by: holls	Map Scale: 1:50,000	Paper Size: A0
Date: Sept 2014	Drawing No: 32965-Gla156	



Viewpoint 4: Lochside Hotel - Existing View



Viewpoint 4: Lochside Hotel - Photomontage of Enoch Hill Wind Farm



OS reference:	E260 204, N614 774	Horizontal field of view:	53.5° (planar projection)	Camera:	Canon EOS 5D Mark II
Eye level:	189.5m AOD	Principal distance:	812.5mm	Lens:	EF50mm f/1.4 USM
Direction of view †:	204°	Paper size:	1189 x 840mm (A0)	Camera height:	1.5m AGL
Nearest turbine:	7.1km	Correct printed image size:	820 x 260mm	Date and time:	22/09/2014 12:46

**Notes:**  
 † Direction given as bearing relative to Grid North (GN03).  
 ‡ The turbines in this figure have been based on the following parameters: Turbine layout file LEHOCH400L20FL - Hub height: 80m - Rotor diameter: 100m - Height to blade tip: 130m  
 § The photomontage aims to provide a realistic representation of the proposed development, based on the current information and meteorology. The turbine positions illustrated may be subject to a receding condition.

Reproduced by permission of Ordnance Survey on behalf of HMSO. © Crown copyright and database rights 2012. All rights reserved. Ordnance Survey Licence number 100017850

**Viewpoint 4 (ES Viewpoint 7):  
Lochside Hotel**

Drawn by: holfs	Map Scale: 1:50,000	Paper Size: A0
Date: Sept 2014	Drawing No: 32965-Gla156	



Viewpoint 6: A70 between Cumnock and Prestwick - Existing View



Viewpoint 6: A70 between Cumnock and Prestwick - Photomontage of Enoch Hill Wind Farm



OS reference:	E247 353, N620 045	Horizontal field of view:	53.5° (planar projection)	Camera:	Canon EOS 5D Mark II
Eye level:	193.5m AOD	Principal distance:	812.5mm	Lens:	EF50mm f/1.4 USM
Direction of view:	146°	Paper size:	1189 x 840mm (A0)	Camera height:	1.5m AGL
Nearest turbine:	11.2km	Correct printed image size:	820 x 260mm	Date and time:	11/06/2014 17:32

Notes:  
 1) Direction given as bearing relative to Grid North (GN).  
 2) The turbines in this figure have been based on the following parameters: Turbine layout file: LEINCHESB.MPL - Hub height: 80m - Rotor diameter: 100m - Height to blade tip: 130m  
 3) The photomontages aim to provide a realistic representation of the proposed development, based on the current information and methodology. The turbine positions illustrated may be subject to a final planning condition.

Reproduced by permission of Ordnance Survey on behalf of HMISO. © Crown copyright and database rights 2012. All rights reserved. Ordnance Survey Licence number 100017856

**Viewpoint 6 (ES Viewpoint 14):  
A70 between Cumnock and Prestwick**

Drawn by: holls	Map Scale: 1:50,000	Paper Size: A0
Date: Sept 2014	Drawing No: 32965-Gla156	amec



Viewpoint 5: Bogton Loch - Existing View



Viewpoint 5: Bogton Loch - Photomontage of Enoch Hill Wind Farm



OS reference:	E246 222, N605 943	Horizontal field of view:	53.5° (planar projection)	Camera:	Canon EOS 5D Mark II
Eye level:	162.5m AOD	Principal distance:	812.5mm	Lens:	EF50mm f/1.4 USM
Direction of view:	80°	Paper size:	1189 x 840mm (A0)	Camera height:	1.5m AGL
Nearest turbine:	9.2km	Correct printed image size:	820 x 260mm	Date and time:	04/11/2013 17:33

**Notes:**  
 1) Direction given as bearing relative to Grid North (GN02).  
 2) The turbines in this figure have been based on the following parameters: Turbine layout file: LEHOCH005.DFL - Hub height: 80m - Rotor diameter: 100m - Height to blade tip: 130m  
 3) The photomontages aim to provide a realistic representation of the proposed development, based on the current information and methodology. The turbine positions illustrated may be subject to a increasing conditions.

Reproduced by permission of Ordnance Survey on behalf of HMGO. © Crown copyright and database rights 2012. All rights reserved. Ordnance Survey Licence number 100027856

**Viewpoint 5 (ES Viewpoint 9):  
Bogton Loch**

Drawn by: hoffs	Map Scale: 1:50,000	Paper Size: A0
Date: Sept 2014	Drawing No: 32965-Gla156	

## Advert for Public Exhibition



# Enoch Hill Wind Farm Public Exhibitions

We're looking at the potential to develop a wind farm called Enoch Hill to the south west of New Cumnock in East Ayrshire and we'd like to hear from you at our public exhibitions.

You will be able to meet the team, view our plans in more detail, see how the wind farm could look and share your views with us.

In the meantime, if you'd like any further information or would like to give us your feedback, please call, write or email us.

We'd like to hear what you think and any questions, concerns or suggestions you might have.

Enoch Hill Wind Farm  
Freepost RRSE-KZCU-AZJL  
E.ON  
Westwood Business Park  
Westwood Way  
Coventry  
CV4 8LG  
swscotland@eon.com

**Location:** Dalmellington Community Centre  
**Date:** Tuesday 7 October  
**Time:** 4pm to 8pm

**Location:** New Cumnock Community Centre  
**Date:** Wednesday 8 October  
**Time:** 4pm to 8pm

**Freephone 0800 096 1199**  
Updates on the proposal are also available on our website at:  
[eonenergy.com/enochhill](http://eonenergy.com/enochhill)

The E.ON logo, consisting of the letters 'e-on' in a white, lowercase, sans-serif font, set against a red rectangular background.

E.ON Climate & Renewables UK Ltd Registered address: Westwood Way,  
Westwood Business Park, Coventry, CV4 8LG. Registered in England and Wales No. 3758404.

Published in the Cumnock Chronicle on the 24<sup>th</sup> of September 2014 and the 1<sup>st</sup> of October 2014

## Press Coverage

Published in the Cumnock Chronicle on  
01.10.14

# Wind company to show Enoch Hill plan

E.ON is inviting local community members to attend public exhibition sessions to find out more about their plans to develop the Enoch Hill Wind Farm to the south west of New Cumnock.

The wind farm would be located south west of New Cumnock in East Ayrshire and could feature between 20-23 turbines, with a capacity to produce around 78.2MW of electricity.

The public information sessions will be held at:

Dalmellington Community Centre, Ayr Road, Dalmellington on Tuesday October 7 between 4pm and 8pm.

New Cumnock Community Centre, The Castle, New

Cumnock on Wednesday October 8 between 4pm and 8pm

Simon LeJeune, Project Developer at E.ON, said: "These sessions are being held to keep the local community informed about our plans and to give them the opportunity to get involved and share their views before we submit our planning application.

"We'd like to thank local people for the feedback they've already provided through our Public Information Days held in November 2012, and through the Community Liaison Group, which we've actively taken on board.

"Since then we've made the commitment that no turbines will be placed within 1.5km of

the nearest residential dwelling following concerns over the visibility and proximity of the site and have also agreed to consider the combined environmental impact of all wind farms within 35km.

"We'd like to invite as many of the community as possible to come along to the Dalmellington and New Cumnock community centres next week, when we'll be happy to discuss our proposals and outline how the wind farm will now look."

Anyone wishing to get in touch can contact the company on 0800 096 1199, or email [swscotland@eon.com](mailto:swscotland@eon.com). For the latest information on the proposals please visit [eonenergy.com/enochhill](http://eonenergy.com/enochhill).

## Poster for Public Exhibitions



We're looking at the potential to develop a wind farm south west of New Cumnock in East Ayrshire.

We'd like to hear from you at our public exhibitions, where you'll be able to meet the team, view our plans in more detail and see how the wind farm could look.

**Location:** Dalmellington Community Centre

**Date:** Tuesday 7 October

**Time:** 4pm until 8pm

**Location:** New Cumnock Community Centre

**Date:** Wednesday 8 October

**Time:** 4pm until 8pm

We'd like to hear what you think so you'll have the opportunity to share your views, concerns or suggestions with us and ask us any questions.

In the meantime if you'd like further information you can call, write or email us.

Enoch Hill Wind Farm  
Freepost RRSE-KZCU-AZJL  
E.ON  
Westwood Business Park  
Westwood Way  
Coventry  
CV4 8LG

[swscotland@eon.com](mailto:swscotland@eon.com)  
Freephone 0800 096 1199

Updates on the proposal are also available on our website at [eonenergy.com/enochhill](http://eonenergy.com/enochhill)

Helping our customers.  
We're on it.

**e-on**

E.ON Climate & Renewables UK Ltd. Registered address: Westwood Business Park Westwood Way Coventry CV4 8LG.

Poster was on display in the following places:  
New Cumnock Community Centre, New Cumnock Primary, New Cumnock Working Men's Club, Dalmellington Community Centre, Bellsbank Community Centre, Bellsbank Primary, Bellsbank Community Centre, The Zone, Dalmellington Council Office, Dalmellington Primary, Doon Academy, Dalmellington Library



## Stakeholder Invite Letter

E.ON Climate &  
Renewables  
Westwood Way  
Westwood Business Park  
Coventry  
West Midlands  
CV4 8LG  
www.eonenergy.com

Simon LeJeune  
Project Developer  
T: 0800 0961199  
E: [swscotland@eon.com](mailto:swscotland@eon.com)

18 September 2014

Dear [REDACTED]

### Proposed Enoch Hill Wind Farm: Invitation to our Public Exhibitions

Tuesday 7 <sup>th</sup> October Dalmellington Community Centre 4pm - 8pm		Wednesday 8 <sup>th</sup> October New Cumnock Community Education Centre 4pm - 8pm	
---	--	--	--

As you may know we're planning to develop a wind farm called Enoch Hill to the south west of New Cumnock in East Ayrshire.

Since we were last in touch we've been working hard to move the project forward. Based on the feedback we've had from the community and some of the results from our studies and assessments we've developed an initial layout that we'd like to consult on.

Our public exhibitions are your opportunity to meet the team, view our plans in more detail, see how the wind farm could look and share your views with us. We'd like to hear what you think and any questions, concerns or suggestions you might have.

We hope to see you there but, in the meantime, please get in touch if you have any questions, or if you would like to meet with us to discuss the project.

Yours sincerely,

[REDACTED]  
Simon LeJeune  
Project Developer

Registered in  
England and Wales  
No 3758404

Registered Office:  
E.ON Climate &  
Renewables  
Westwood Way  
Westwood Business Park  
CV4 8LG

# Appendix III – Project Website

For your home | For your business | **About E.ON** | E.ON Group

Login or Register

About E.ON | Our company | Customer Service | Community | Responsibility | Careers

- Our company
- Generation
- Planning for the future**

---

Wind

---

Onshore

---


**Enoch Hill**

## Enoch Hill

We're investigating the potential to develop a wind farm in East Ayrshire, around 14km south west of New Cumnock. At the moment we think that the site could have around 23 turbines, which could mean an installed capacity of around 60MW.


### Met Masts

Following consent from East Ayrshire Council, we have begun to install two met masts on site. They will collect wind data and help us to place the turbines in the best locations within the site.




**Project information**

More information on the proposed wind farm at Enoch Hill.




**Initial assessments**

Find out more about our environmental and technical studies.



**Community information**

We're keen to play a positive role in your community when discussing proposals for the new wind farm.



**Have your say**

Get in touch with us.

## Appendix V – Materials from the Community Liaison Group

### Terms of Reference

#### Enoch Hill Community Liaison Group

##### Terms of Reference

##### **Purpose of the Community Liaison Group**

The Enoch Hill Wind Farm Community Liaison Group (CLG) will be made up of representatives from the neighbouring community councils, and other local representatives who expressed an interest in membership of the CLG at the public information days.

The meetings will be designed to provide meaningful two-way communication between the local community and E.ON on the project. This forum will therefore provide local stakeholders an opportunity to raise issues and concerns directly with E.ON on an on-going basis, whilst importantly providing the local community with a real and tangible opportunity to inform and input into the design process.

The CLG will have the following objectives:

- To inform the community of the progress of the project
- To obtain feedback and input on the emerging proposals.
- To identify and discuss any issues requiring clarification to ensure that any potential concerns regarding the proposals are fully understood and addressed where possible.
- To identify potential effects of the project on the neighbouring community and local environment and therefore assessing the significance of those impacts and exploring ways to mitigate these issues.

##### **Remit**

The group will provide two-way communication on the project between E.ON and local community. The aim is to help to increase awareness within the community as the project moves forward, and importantly seek to shape the design philosophy based upon the views of the CLG.

It should be noted that the CLG has not been set up to form a view on a future planning application for the development site. No decisions will be taken by a vote on the group and all feedback will be considered by E.ON.

Please note that matters concerning community benefit payment will not be covered by this group.

#### **Membership**

Membership of the group will consist of the names outlined in the table below but others will be able to join at a later date should they wish to:

<b>Organisation</b>	<b>Name</b>
Local Resident	Ian Howat
Robert Burns Society	Alastair Dick
New Cumnock Community Council	David Rush
Yipworld	Janice Hendry
Local Resident	Geoff Crally
Local Resident	Jimmy Carmichael
Ayrnet Marketing	Gary Parker
E.ON	Simon LeJeune/Susannah Caunce

To ensure that the group is manageable and productive, the membership of the group will be limited to a maximum of 20 people.

The Convenor of the group will be elected by members of the CLG.

If a member who is representing a 'community group' is unable to attend a meeting of the CLG they will be entitled to nominate a substitute (representing their community group) on their behalf. Ayrnet Marketing as the secretariat for the group should be notified of this substitution no later than one working day in advance of the meeting.

Once the project is submitted into planning, the group will go into abeyance to avoid conflict of interest for the members.

#### **Organisation**

The first item of business at the inaugural meeting will be to elect a Convenor who will be elected on an annual basis from the membership of the CLG.

Ayrnet Marketing, acting on behalf of E.ON, will provide secretariat support for the meetings including: arranging meetings; drafting and circulating agenda; recording and circulating the minutes of the meeting.

All documentation relating to the CLG meetings will be available on E.ON's website including the agenda and minutes of each meeting.

The agenda and minutes will be circulated to elected members and community councils.

The first meeting will be held in New Cumnock Village Hall, the venue for future meetings will be decided on by the CLG.

The frequency of the meetings shall be decided between the group and E.ON.

The meetings will not be open to members of the public.

## Minutes – CLG Meeting 27<sup>th</sup> May 2014

### **Enoch Hill Wind Farm Community Liaison Group**

Minute of Meeting

27<sup>th</sup> May 2014

New Cumnock Community Centre 7pm-8.30pm

#### **Attendees:**

Ian Howat	(Local Resident)
David Rush	(New Cumnock Community Council)
Alastair Dick	(Robert Burns Society)
Susannah Caunce	(EON)
Simon LeJeune	(EON)
Gary Parker	(Ayrnet Marketing)

#### **Apologies:**

Geoff Crolley	(Local Resident)
Jimmy Carmichael	(Local Resident)
Janice Hendry	(Yipworld)

#### **1. Welcome and Introduction**

GP welcomed everyone to the meeting and for giving up their own personal time to attend and importantly contribute to the discussion. GP then invited a round table introduction of all attendees

#### **2. Election of Chairperson**

SC sought a nomination for Chair of the meeting. None was forthcoming, it was therefore unanimously agreed that GP Chair the proceedings and will chair any later meetings

#### **3. Role of Liaison Group:**

SC then took members through the Terms of Reference (Appendix 1) for the Liaison Group, explaining that the role of the Liaison Group was to provide members of the local community and the respective Community Councils a real opportunity to

inform, input and shape the design process for the proposed Enoch Hill Wind Farm, and raise any issues of concern directly with E.ON on an on-going basis.

It was also highlighted by SC that the Liaison Group had not been setup to form a view on any future planning application and that matters concerning Community Benefit would not be covered under the remit of the Liaison Group.

#### **4. Project Update**

##### **a. Mapping**

SLJ used showed the attendees a red line boundary plan (Appendix 2) to inform the group where the site was located. SLJ then showed a second plan outlining the access route to site (Appendix 3) from the Port of Ayr. SLJ then talked through the entrance to site and also outlined that this was the preferred route but there was still potential that it could change.

DR asked the question why we aren't using the A77/A70. SLJ explained that transport consultants have done a swept path analysis (SPA) to look at the tight corners, low bridges and that they have suggested the route to site that means as little alteration and disruption as possible. SLJ also stated that there is no possible way of avoiding the turbines being delivered through New Cumnock.

IH asked whether the turbines would be delivered at night. SLJ committed that they will be delivered outside peak traffic periods, when there is less traffic on the roads, which could be night time but also evening or early morning. in order to allow for as little disruption as possible.

SLJ then talked the group through the constraints map. (Appendix 4) He pointed out that this map shows the areas we have to avoid for the placement of turbines. SLJ pointed out that burns and watercourses had a 50m or 100m buffer around them which means that we are not able to allow any infrastructure with the exception of roads and bridges or turbines within that buffer.

SLJ pointed out the 750m buffer around housing but also stated that he believes the buffer around Monquhill House may be wrong as it may be derelict and uninhabited. IH confirmed that this is the case.

SLJ pointed out that along the B741 there a number of residential properties. SLJ pointed out a red line has been drawn across the northern section of the site and that there will be no turbines sited north of this red line. SLJ stated that the nearest turbine to a property will be approximately 1.5km based on the current developable areas.

IH asked whether the intention was for the site to connect to the grid at Meikle Hill. SLJ answered that there has been no grid application submitted yet but this was a likely point of connection.

SLJ then pointed out the low flying zone that runs along the northern part of the site, the and also the buffer that sits around the woodland on the outer boundaries of the site. SLJ stated that at the moment there have been no significant ecological or

ornithological constraints identifies but a black grouse lek has been identified and is shown on the map.

SLJ then pointed out that there are some steep gradients shown on the map and that we would consider these as a constraint as it would mean altering the profile of the land if these areas were used.

IH asked about the peat on site. SLJ confirmed that E.ON would be undertaking peat probing and carbon calculations at a later date.

SLJ then showed the group a map of the developable areas (Appendix 5) to show where turbines can be sited on the land available. SLJ confirmed that these developable areas can accommodate a maximum of 23 turbines.

IH asked whether a drop in the number of turbines could mean that the project would be non-viable. SLJ confirmed that it could be the case but we haven't got to that stage of the process yet.

SLJ confirmed that we have two wind monitors on site and that we need 6 months of wind data before we can be confident of wind yield.

#### **b. General discussion**

IH pointed out the area is very active in terms of cumulative activity and that there are over 400 turbines in planning.

IH asked whether we will do photomontages of all of the viewpoints. SLJ confirmed that we would do photomontages but not of all the VPs but of the most important. For the VPs that we didn't do photomontages for, we would do wireframes.

SLJ also confirmed that we would be doing noise monitoring and that the consultants had specified locations that were most suitable.

IH asked about wind speeds on site. SLJ confirmed that the site had good wind speeds. IH asked whether the ECU had any restrictions on turbine heights. SLJ confirmed that E.ON have submitted applications for turbines up to 145m blade tip height in the Highlands, but that Landscape and Visual considerations do need to be taken into consideration as well as community feedback and other environmental restrictions.

IH asked about decommissioning of turbines and whether we put a bond in place. SLJ confirmed that we offer either a Parent Company Guarantee (PCG) or a bank bond. E.ON encourages a PCG as it can be a better security to have an E.ON PCG than a bond from a UK Clearing Bank. However if the Scottish Government reject the PCG then we arrange for a banking bond.



SJL asked which VPs the group were interested in. SC confirmed that it was possible to show a specific VP from residential properties if this was of interest to the group. IH confirmed that he would like to see VPs from his property

IH stated that his main concern was that he didn't want to get to the stage where you couldn't look of the window without seeing turbines and people start to object who wouldn't otherwise. Mentions were also made of other competitor schemes in the area that are already in planning. SJL stated that all of the E.ON sites currently in the area are located a good distance from residential properties and settlements as the aim is to have as little impact on residential dwellings as possible.

DR stated that he believes turbines will eventually become part of the landscape and it is necessary to encourage investment into the area.

GP thanked all for attending and giving up their personal time.

#### **5. Date of Next Meeting**

2<sup>nd</sup> July. Email will be sent round in the next couple of weeks to confirm.

**END**

## Minutes – CLG Meeting 2<sup>nd</sup> July 2014

### **Enoch Hill Wind Farm Community Liaison Group**

Minute of Meeting

2<sup>nd</sup> July 2014

New Cumnock Community Centre 7pm-8.30pm

#### **Attendees:**

Ian Howat-IH	(Local Resident)
John Houston-JH	(New Cumnock Community Council)
David Easton-DE	(Kirkconnel & Kelloholm Community Council)
Anita Mulders-AM	(Local Resident)
Jerry Mulders-JM	(New Cumnock Community Council)
Mhari Vallance-MV	(Local Resident)
David McMillan-DM	(CREFEL)
Norman Burns-NB	(Sanquhar Community Council)
Alastair Dick-AD	(Robert Burns Society)
Susannah Caunce-SC	(EON)
Simon LeJeune-SL	(EON)
Aoife O’Keeffe-AOK	(EON)
Gary Parker-GP	(Ayrnet Marketing)

#### **Apologies:**

Elaine Stewart	(The Zone Initiative)
Davie Rush	(New Cumnock Community Council)

#### **1. Welcome and Introduction**

GP welcomed everyone to the meeting and for giving up their own personal time to attend and importantly contribute to the discussion. GP then invited a round table introduction of all attendees

#### **2. Election of Chairperson**

SC sought a nomination for Chair of the meeting. None was forthcoming and it was therefore unanimously agreed that GP Chair the meeting.

#### **Role of Liaison Group:**

SC stated that the last Community Liaison Group (CLG) held on 27<sup>th</sup> May, was an introduction to the project and the initial constraints. The focus of this CLG is on site design, turbine placement, developable areas, site constraints, and landscape/visuals.

SC stated that we would begin by looking at a maximum turbine layout regardless of soft constraints and look at this from numerous local viewpoints. We would then begin to eliminate wind turbines based on the feedback gathered at the meeting on landscape and visual impacts.

SC stated that E.ON would seek to understand what is acceptable to the community, take feedback, and build this into the wind farm design, and then present this at a public exhibition.

SL stated that this is a good moment in the evolution of the project to influence wind farms design as it fluid and it is easier to make changes now, rather than further down the line.

### **3. Project Update**

#### **a. Mapping**

SL presented the site location map (Appendix 1) in order to show the group where the proposed Enoch Hill wind farm is located.

AM asked a question regarding the southern extension for pylons and whether they came within the site. SL stated that the pylons don't come through the site.

JM queried why we are not putting more than 23 turbines on the site. SL responded that this is due to a number of issues, including the sites gradient which would require cut and fill changes to the profile of the landscape, but also because of commitments given to keep turbines further away from residential properties. JM asked another question regarding whether E.ON would consider using turbines of varying heights across the site. SL responded that it is something we have done on other site with aviation issues but it was not envisaged with Enoch Hill.

JM asked how tall the turbines were planned to be. SL responded that we submitted into scoping an up to 150m to tip but the actual turbine height was not decided upon yet, but initial consideration was being given to 130m tip heights. JM commented that this is more than double the 70m recommended in the East Ayrshire Land Capacity Study. SL stated that this 70m is advisory and that these smaller turbines would not be suitable for this site. SC added that due to E.ON's procurement policy it could mean that by the time wind farm was ready to procure turbines, 70m to tip turbines they may be difficult to procure in the open market.

JM then commented that E.ON are not taking into account the East Ayrshire Capacity Study which recommend that the area should not accommodate any turbines above 70m to tip. SC commented that it was in E.ONs best interest to consider guidance from East Ayrshire Council as they were a key consultee in the planning process. SC commented that although the project may be a Section 36 application, E.ON still approach consultation in the same way and ensure that the Local Council is involved and engaged from the beginning of the process.

JM confirmed that it would be a good thing if E.ON were to consider this study. MV then asked the question why the site was chosen. SL responded that there are a few things that E.ON look for when developing a wind farm site; good wind speeds, good grid connection, no designations, and away from more populated areas. AM then asked why do E.ON need to develop wind farms away from people? SL stated that E.ON has to consider a range of issues including noise and landscape and visual. SL also stated that there would be a lot more objections if there were more people living next to a proposed development.

SL then showed the group the developable areas map. SL stated that the plans show a maxed out layout 40 turbines, but that there will not be more than 23 turbines due to the fact that E.ON have already undertaken some environmental studies. AM asked whether E.ON could commit to no extension of Enoch Hill? SC stated that E.ON develops a site that is designed to be at its best when submitted into planning. SC stated that E.ON believe 23 is the optimum layout in order to maximise the wind on site and the best layout is designed first time around, depending on the wind and that if E.ON were to approach development in any other way, it would be detrimental to the project.

JM then asked if Enoch Hill is in the East Ayrshire Council area of search for wind farms. SL said that it isn't. JM then stated asked whether SL believes that East Ayrshire Council is wasting their time. SC stated that East Ayrshire will have their say at planning and that will be taken into account. It was agreed by a few people that an East Ayrshire Areas of Search map overlaid on top of the E.ON constraints plan would be good for the next meeting.

SL then showed the attendees a red line boundary plan (Appendix 2) to inform the group where the site is located. SLJ then showed a second plan outlining the access route to site (Appendix 3) from the Port of Ayr. SL then talked through the entrance to site and also outlined that this was the preferred route but there was still potential that it could change.

DR asked the why E.ON aren't using the A77/A70. SLJ explained that transport consultants have done a swept path analysis to look at the tight corners, low bridges and that they have suggested the route to site that means as little alteration and disruption as possible. SL also stated that there is no possible way of avoiding the turbines being delivered through New Cumnock.

IH asked whether the turbines would be delivered at night. SL committed that they will be delivered outside peak traffic periods, when there is less traffic on the roads, which could be night time but also evening or early morning in order to allow for as little disruption as possible.

SL then talked the group through the constraints map. (Appendix 4) He pointed out that this map shows the areas we have to avoid for the placement of turbines. SL used an example to demonstrate how E.ON use buffers in order to build up the constraints map. SL pointed out that burns and watercourses had a 50m or 100m

buffer around them which means that we are not able to place wind turbines within this buffer.

SL pointed out the 750m buffer around housing but also stated that he believes the buffer around Monquhill House may be wrong as it may be derelict and uninhabited. IH confirmed that this is the case.

SL pointed out that along the B741 there a number of residential properties. SL pointed out a red line has been drawn across the northern section of the site and that there will be no turbines sited north of this red line. SL stated that the nearest turbine to a property will be approximately 1.5km based on the current developable areas.

IH asked whether the intention was for the site to connect to the grid at Meikle Hill. SL answered that there had been no grid application submitted, but this could be a likely point of connection.

SL explained the low flying zone that runs along the northern part of the site, the and also the buffer that sits around the woodland on the outer boundaries of the site. SL stated that at the moment there have been no significant ecological or ornithological constraints identified but a black grouse lek has been identified and is shown on the map.

SL stated that there are some steep gradients shown on the map and that E.ON would consider these as a constraint, as otherwise it would mean altering the profile of the land if these areas were used.

IH asked about the peat on site. SL confirmed that E.ON would be undertaking peat probing and carbon calculations at a later date.

SLJ then showed the group a map of the developable areas (Appendix 5) to show where turbines can be sited on the land available. SLJ confirmed that these developable areas can accommodate a maximum of 23 turbines.

IH asked whether a drop in the number of turbines could mean that the project would be non-viable. SL confirmed that it could be the case but we haven't got to that stage of the process yet.

SLJ confirmed that we have two wind monitoring masts on site and that the internal E.ON requirement is to have 6 months' worth of wind data before we are confident of future wind yield on site.

#### **b. Viewpoint and Wireframe Discussion**

SC stated that the intention was to show the group some wireframes from locations that E.ON had identified as being particularly significant to the community. SC also stated that the wireframes are only a representation and that E.ON would be happy to provide any other wireframes that the community would find useful at this stage.

SL then showed the group a selection of wireframe viewpoints (VPs).

#### **VP1 – Dalleagles**

Having looked at the wireframe the group agreed that it would be best if the design of the site mirrored the curve of the hill. A comment was made by AM that the Bar wind farm is disorientating and that more consistency would be good.

JM then asked whether you would see any turbines from this VP if they were 70m. SL stated that you would not.

A member of the group then asked whether E.ON could show the group a 3D model and a request was made that E.ON bring 'Windfarm' software to the next CLG

#### **VP2 – Burnside**

AM commented that the turbines on the left look awful, and suggested that they should be thinned out.

Question regarding grid connection and the cable route. SLJ confirmed that the route was not yet decided upon. JM asked whether there would be borrow pits on site. SLJ stated that the decision on this would come further into the environmental studies.

A question was then asked regarding access route. SLJ stated that access would be via the B741 through farm access at the brow of the hill. Comment from community that this section of road is impassable in winter.

#### **VP3- New Cumnock Cemetery**

A comment was made by the group that Pencloe Wind Farm was not on the wireframe plan. The community request whether it can be included for all future wireframes.

There was another request to put Monquill on plan. SL stated that this won't be added at this time as it is not yet in the planning system yet.

The general feeling of the group was that that the cumulative impact shown on the plan is awful. The style of Enoch Hill when compared to E.ON and Ashmark is mismatched due to the fact that Ashmark is spread across the horizon and Enoch Hill is clustered at this point. The group decided that the cluster style was the preference.

AM asked whether E.ON would resubmit the planning application if it was refused (like South Kyle). SC stated that this was unlikely.

There was then a question asked about bonds and decommissioning. SL confirmed that E.ON will always give a parent company guarantee (PCG) but if East Ayrshire want the security as a UK banking bond we will provide a bond from a UK Clearing Bank.

A question was asked whether the Community Benefit would remain in place if the project was to be divested. SC confirmed that if E.ON were to sell the site then the new buyer would take on the commitments of the site in relation to Community Benefit. SL then confirmed that they must give the same replacement security .

#### **VP4- A76 New Cumnock**

The group collectively agreed that the cluster of turbines needed to be reduced. IH asked whether there is a VP from his property. SLJ said no but that E.ON could provide one.

#### VP5- C36 North of Nith Bridge

The group agreed that the turbines should be moved slightly to the left. The comment was also made that the wireframe should include Hare Hill extension and Pencloe. A comment was made that there needs to be more separation from the other schemes in the same viewpoint so it doesn't look like one big wind farm.

#### VP6- Pathhead Estate, New Cumnock

The group agreed that the cluster of turbines need to be thinned but it was decided that the cluster style is better than linear.

There was a request for E.ON to provide a new viewpoint from Laglaff. There was then another request to provide another viewpoint from the top of the road where VP5 is located. The group also asked whether there could be a viewpoint provided from Lochside Hotel. SL confirmed that E.ON could provide this but that he thought Enoch Hill would not be overly visible from this location.

A question was then raised regarding community benefits, and whether the benefit would be allocated to 10km or 15km from the site. SC stated that this won't be discussed at this stage and it is a decision that has not been taken at this stage

AM then commended E.ON on approach to consultation and their appreciation of the views of the local community.

#### 4. Action Overview

Action	Responsibility/Timescales
<ul style="list-style-type: none"><li>• Overlay the EAC Local Capacity Study onto the E.ON map</li></ul>	E.ON to provide at next meeting
<ul style="list-style-type: none"><li>• 'Wind Farm' software at next meeting</li></ul>	E.ON to look into 3Dmodelling as an option for the Public Exhibitions
<ul style="list-style-type: none"><li>• Update Wireframes with other cumulative sites- specifically Pencloe and Hare Hill Ext.</li></ul>	E.ON to provide at next meeting
<ul style="list-style-type: none"><li>• Additional VP from Laglaff IH property</li></ul>	E.ON to provide at next meeting
<ul style="list-style-type: none"><li>• Additional VP from top of hill shown on VP5 and move visibility arc to the right</li></ul>	E.ON to provide at next meeting
<ul style="list-style-type: none"><li>• Additional VP from Lochside Hotel</li></ul>	E.ON to provide at next meeting

#### 5. Date of Next Meeting

TBC. Email will be sent round in the next couple of weeks to confirm.

## **Agenda – CLG Meeting 10<sup>th</sup> September 2014**

**Enoch Hill Wind Farm  
Community Liaison Group (CLG)**

**10<sup>th</sup> September 2014**

**New Cumnock Community Centre – 7pm**

- 1. Welcome and Introduction**
- 2. Apologies for Absence**
- 3. Minutes of Meeting of 2<sup>nd</sup> July 2014**
  - a. Actions Arising**
- 4. Enoch Hill project Update (E.ON):**
  - a. Design Update**
  - b. Public Exhibition Timescales**
  - c. Submission Timeframe**
- 5. Date of Next Meeting**
- 6. AOCB**

**END**



## Minutes – CLG Meeting 10<sup>th</sup> September 2014

### **Enoch Hill Wind Farm Community Liaison Group**

Minute of Meeting

10<sup>th</sup> September 2014

New Cumnock Community Centre 7pm-8.30pm

#### **Attendees:**

John Houston - JH	(New Cumnock Community Council)
David Easton - DE	(Kirkconnel & Kelloholm Community Council)
Anita Mulders - AM	(Local Resident)
Jerry Mulders - JM	(New Cumnock Community Council)
Mhari Vallance - MV	(Local Resident)
Geoff Crawley - GC	(New Cumnock)
Russell Boyle- RB	(Kirkconnel and Kelloholm)
Billie Robertson- BR	(Kirkconnel and Kelloholm)
Derek Rush - DR	(New Cumnock Community Council)
Alex Kirk - AK	(Patna Community Council)
David McMillan - DM	(CREFEL)
Susannah Caunce - SC	(E.ON)
Simon LeJeune - SLJ	(E.ON)
Gary Parker - GP	(Ayrnet Marketing)

#### **Apologies:**

Marranne Heron	(New Cumnock)
Alastair Dick	(Robert Burns Society)
Ian Howat	(Local Resident)
Tony Challis	(Carsphairn)
Steve Cowley	(Carsphairn)
Andrew Metcalf	(Carsphairn)
Sylvia Sinclair	(Carsphairn)
Von Jackson	(New Cumnock)
Davie Rush	(New Cumnock)
Sybillie Trimble	(Kirkconnel & Kelloholm Community Council)
Barry Whalen	(Patna CC)
Norman Burns	(Sanquhar)
Duncan Close	(Sanquhar)
John Murray	(Sanquhar)

### 1. Welcome and Introduction

GP welcomed everyone to the meeting and for giving up their own personal time to attend and importantly contribute to the discussion. GP then invited a round table introduction of all attendees

### 2. Election of Chairperson

SC sought a nomination for Chair of the meeting. None was forthcoming and it was therefore unanimously agreed that GP Chair the meeting.

### 3. Apologies

As noted above

### 4. Minutes of Meeting of 2<sup>nd</sup> July 2014

#### a. Actions Arising

GP invited the CLG members to look through the minutes of the last meeting and raise any concerns. No concerns were raised. GP then proceeded to talk through the table of actions arising from the last meeting. (Shown Below) GP confirmed that all the actions were either underway or completed. This was confirmed by members of the CLG.

Action	Responsibility/Timescales	Outcome
<ul style="list-style-type: none"><li>Overlay the EAC Local Capacity Study onto the E.ON map</li></ul>	E.ON to provide at next meeting	E.ON commitment to provide at Public Exhibition
<ul style="list-style-type: none"><li>'Wind Farm' software at next meeting</li></ul>	E.ON to look into 3Dmodelling as an option for the Public Exhibitions	E.ON provided wind farm Pro software at Public Exhibition
<ul style="list-style-type: none"><li>Update Wireframes with other cumulative sites- specifically Penclow and Hare Hill Ext.</li></ul>	E.ON to provide at next meeting	Complete
<ul style="list-style-type: none"><li>Additional VP from Laglaff IH property</li></ul>	E.ON to provide at next meeting	Complete
<ul style="list-style-type: none"><li>Additional VP from top of hill shown on VP5 and move visibility arc to the right</li></ul>	E.ON to provide at next meeting	Complete
<ul style="list-style-type: none"><li>Additional VP from</li></ul>	E.ON to provide at next meeting	Complete

Lochside Hotel		
----------------	--	--

**b. Enoch Hill project Update (E.ON):**

SLJ showed the wireframes from the previous meeting to recap that there had been a reduction from 45 to 23 turbines. The group as a whole agreed that the visual impact was a lot less significant and that the grouping of turbines was better than the linear style.

SLJ then passed around the constraints plan to show the hard constraints and also to show that E.ON have made the commitment not to put turbines above the grid line which is approx. 1.5km from the nearest property.

A question was raised as to whether the wind was better on the hills. SLJ responded that it was a good site for wind resource and that the design of a site was not just dependant on the wind resource but also the feedback from the community which in this case had been taken on board.

**c. Viewpoint discussions**

**VP2 – Burnside**

General consensus that the VP had improved. SLJ stated that the VP from Burnside had improved due to the reduction of turbine numbers and moving some turbines to different locations. AM commented that 3 turbines in the middle of the wireframe need to be moved because they look a bit linear

JM stated that E.ON have reduced the site by almost a 3<sup>rd</sup> and AM then commented that Ashmark wind farm has recently been refused.

**VP 3– Laglaff**

The comment was made that Ashmark would be closer in proximity. It was then stated that the numbers on the wireframe depiction was confusing and would be better without them.

JM then stated that if South Kyle goes ahead that together with Enoch Hill it would look like one big wind farm.

A request was made to see a wireframe from Knowtop near a grouping of three houses, where the new substation is proposed.

**VP3- New Cumnock Cemetery**

GM commented that the forest would take out what you could see but that there was a habit of cutting down forest.

GM then asked whether if the Ashmark has been refused and gets refused at appeal, can they come back and reapply for planning permission?

SLJ stated that we would always keep Ashmark within our cumulative assessment but stated that it would unlikely be resubmitted if the appeal was dismissed, unless the Reporters decision gave some opportunity for a revised scheme, in which case the developer may decide to resubmit.

#### **VP6- High point at Auchincross**

A request was made for a VP to be shown at the top of the hill near Auchincross, out the back road.

AM then asked how many wind farms there were JM replied that there are ten.

JM then asked where small personal aircraft pilots have to wear infra-red goggles?

SLJ stated that we only have to consider commercial airlines.

JM then commented that the cumulative wireframes are very interesting to see. JM then requested for the photomontages shown at the public exhibitions to be as realistic as possible. SLJ stated that there are very strict optical requirements for photomontages and they will be as accurate and technically precise as possible. AM asked whether it was possible to make the turbines slightly darker on the photomontages so that they were more visible. SLJ committed that he would talk to consultants regarding this point in time for the Public Exhibitions.

#### **VP 7 – C36 North of Nith Bridge**

Comment was made that there wasn't much difference to the wireframe shown before.

A question was then asked about whether we have considered the B&B businesses and also the tourist trade and whether we have considered that people come to this area of the world for the beautiful views.

SC responded to say that we would bring 'Windfarm Pro' the exhibitions so that we can show alternative viewpoints.

#### **VP 9 & 10- Lochside Hotel**

A question was asked about how far the nearest turbine was to the hotel. SLJ stated that on this visualisation it showed 7.1km distance to the nearest turbine.

JM then asked what the hotel thinks about the wind farm proposal. SLJ commented that we haven't had any direct feedback from them but we do advertise the events and the project. SLJ stated that you can see the project more when you go down onto the Loch shore.

#### **VP 8 – A76 New Cumnock**

No comments

#### **VP11- Near Pathhead Estate**

JM stated that if you space the turbines from one VP then it may look stacked from another VP. JM then asked what the VP was like from the Craigangillan Estate. SLJ responded to say that there was no view. AM then asked whether there was a view of the wind farm from Dumfries House. SLJ again stated that there was no view from Dumfries House either.

Having shown all the wireframes, SLJ then asked the group for the general feeling regarding what they have seen. JM stated that there have been some good improvements made to the site.

A question was then asked about where the wind farm will be connected to the grid. SLJ stated that we haven't yet got a grid connection but it is likely to be at New

Cumnock substation and that if we were responsible for laying the cables we would make every effort to underground the cables if we have to go to the grid but if the grid company comes to us, we don't have a say..

A question was asked why we don't connect onto Ashmark. SLJ stated that the nearest connection point is New Cumnock. JM then asked that if we are undergrounding the cables, can we put them in ditches. SLJ stated that we need a substation on site in order to connect our 33KV inter-array cable, cabling is usually along the turbine roads within the site. SLJ then explained that the meter operator would then have metering in the E.ON substation. The export cable to the Transmission substation may be underground or overhead depending on who was responsible for it.

A question was raised about whether there would be a disturbance to the BT link? SLJ committed that there was a guarantee that if there was a disturbance, E.ON would take responsibility to rectify the problem however it shouldn't be as BT are one of the stakeholders involved, and have been consulted to ensure that our turbines don't affect their with its signal.

A question was then asked about how many more turbines it would take before we meet our limit. SC stated that E.ON is working within a framework that is set out by the government which is a target for renewable generation by 2020.

Further discussion was then had regarding community benefit. SC stated that this particular meeting was focussed on the design elements of the sit and gaining feedback on design principles so that E.ON could submit a site into planning that had tried to address the concerns of the local people. SC stated that E.ON is supportive of community benefit and has committed to £5000 per MW of installed capacity for the lifetime of the project. A question was asked regarding who would benefit for the community benefit. SC commented that this was something that had not been decided for this project yet.

#### 5. Action Overview

Action	Responsibility/Timescales
<ul style="list-style-type: none"><li>Show a VP from Auchincross</li></ul>	E.ON provided at Public Exhibition
<ul style="list-style-type: none"><li>Turbines made to look realistic on the photomontages at Public Exhibitions</li></ul>	E.ON provided at Public Exhibition

#### 6. Date of Next Meeting

TBC. Email will be sent round in the next couple of weeks to confirm.

END

## Agenda – CLG Meeting 15<sup>th</sup> July 2015

### Enoch Hill Wind Farm Community Liaison Group (CLG)

15<sup>th</sup> July 2015

New Cumnock Leisure Centre – 7.30pm

1. Welcome and Introduction
2. Election of Chairperson
3. Apologies for Absence
4. Minutes of Meeting of 10<sup>th</sup> September 2014
  - a. Actions Arising
5. Enoch Hill project Update (E.ON):
  - a. Design Update
  - b. Submission Timeframe
  - c. Next Steps
6. AOB

END

## Minutes – CLG Meeting 15<sup>th</sup> July 2015

### **Enoch Hill Wind Farm Community Liaison Group**

Minute of Meeting

15<sup>th</sup> July 2015

New Cumnock Community Centre 7.30pm-8.30pm

#### **Attendees:**

Ian Howat- IH	(New Cumnock Community Council)
Sybillie Trimble	(Kirkconnel & Kelloholm Community Council)
Anita Mulders - AM	(Local Resident)
Jerry Mulders - JM	(Local Resident)
Mhari Vallance - MV	(Local Resident)
Bill Robertson- BR	(Kirkconnel and Kelloholm)
Sylvia Sinclair-SS	(Carsphairn)
Marranne Heron-MH	(New Cumnock)
Alex Kirk - AK	(Patna Community Council)
William Stevenson- WS	(Patna Community Council)
Susannah Caunce - SC	(E.ON)
Simon LeJeune - SLJ	(E.ON)
Gary Parker - GP	(Ayrnet Marketing)

#### **Apologies:**

Alastair Dick	(Robert Burns Society)
David McMillan	(CREFEL)
David Easton	(Kirkconnel & Kelloholm Community Council)
Norman Burns	(Sanquhar)
Gordon McCracken	

#### **1. Welcome and Introduction**

GP welcomed everyone to the meeting and for giving up their own personal time to attend and importantly contribute to the discussion. SC then invited a round table introduction of all attendees. Once everyone had introduced themselves SC reiterated her thanks to the CLG members. SC then stated that this meeting was the fourth CLG held in relation to the Enoch Hill project. SC commented that the group had input throughout the process and that E.ON now wanted to show the final proposal which will be submitted into planning.

#### **2. Election of Chairperson**

SC sought a nomination for Chair of the meeting. None was forthcoming and it was therefore unanimously agreed that GP Chair the meeting.

### 3. Apologies

As noted above

### 4. Minutes of Meeting of 2<sup>nd</sup> July 2014

#### a. Actions Arising

GP invited the CLG members to look through the minutes of the last meeting and raise any concerns. No concerns were raised.

### 5. Enoch Hill project Update (E.ON):

#### a. Design update

SU showed the wireframes from the previous meeting to recap that there had been a reduction from 45 to 23 turbines.

SU then stated that E.ON had brought a selection of the Viewpoints on print outs, that had been requested by the community as well as the photomontages for some of the selected viewpoints.

#### VP 1 – Dalleagles

SU stated that the viewpoint has been optimized and community feedback, as well as wind yield and environmental input have seen the site reduced to 19 turbines, AM asked how tall the turbines are and SU answered that they are represented on the plans as 130m to tip but that this is the 'up to' number and could reduce depending on the turbine type used. SU then commented that there were 5 turbines visible from this viewpoint.

#### VP 2– Laglaff

SU stated that the nearest turbine to Laglaff property was now 3.1km. IH commented that the viewpoint has improved. SU stated that a lot of the turbines that were more visible have been removed and there is now more distance between them and the nearest receptors.

#### VP 3- Burnside

SU pointed out that the orange turbines represented on the map are the 'South Kyle' Development. SU explained that we have to show cumulative activity on the visualisations as part of the Environmental Impact Assessment. JM stated that the Enoch Hill development is further away and therefore has less of an impact because they look smaller.



**VP4- New Cumnock Cemetery**

No comment was made

**VP6- High point at Auchincross**

No comment was made

**VP 7 – C36 North of Nith Bridge**

SU commented that the impact was similar to that of the previous VP shown.

**VP 8 – A76 New Cumnock**

SU commented that the visual impact was very limited due to the houses and foliage which would provide a natural screening.

JM asked why Windy Standard wasn't visible from the VP. This was answered by MV who stated that Windy Standard would be behind you considering where the photograph was taken.

**VP 9 - Lochside Hotel**

SU commented that this was the panoramic view from the restaurant. JM commented that there were lights on top of the Windy Standard development. IH asked whether the Enoch Hill site would have lighting on top of the turbines. SU commented that there would be lights but they would be infra-red lights and not visible to the naked eye.

**VP11- Near Pathhead Estate**

SU commented that this was taken from a high point and that was why the CLG requested it. WA question was raised regarding the exact location. SU confirmed that it was taken from near the bakery.

SU then passed around the visuals representations and photomontages for the members of the meeting to have a closer look.

SU then commented that the grid connection point at New Cumnock Substation and the onsite substation will be behind Peat Hill and therefore hidden. SU then stated that the onsite cables will be undergrounded and the offsite cables will run alongside the highway verge and the transmission operator will trench down alongside the road.

AM asked if they could put high-speed broadband in at the same time? SU commented that this would not be an E.ON decision.

SU then talked through the access route for the turbines to site. He stated that they would come in on the A76 and through New Cumnock on the B741. MV asked how the turbines would make it up the hill and IH commented that the street furniture would be removed. SU agreed and stated that the removal of street furniture would be temporary. SU then stated that in the Environmental Statement there is a swept path analysis which shows exactly how much road take there would be when transporting the turbines. SU stated that street furniture such as lighting would be

removed but heritage value items would be left and avoided. JM then asked where the site access was. SLJ then pointed out the access to site on a map. AM asked where the rock of the roads is brought in from. SLJ stated that there are a number of borrow pit search areas in the planning application and at the moment E.ON believe there is enough on site aggregate in order to build all the internal roads,. The preference is always to use on site resources as there is less environmental and traffic impact. JM then asked whether E.ON would have to pay an aggregate tax. SLJ stated that this may be the case.

A question was then raised about the subsidies and whether the recent announcements from Government would affect Enoch Hill application. SC stated that as this site was not eligible for ROCs it would instead fall under the Contract for Difference (CfD) regime and therefore, was not affected by the announcements. SC stated that there has so far been no formal announcement made regarding the status of CfD however E.ON were supportive of bringing down the cost of Onshore Wind. SC stated that E.ON has been working for a number of years to reduce the cost so that it could compete with more conventional forms of energy generation.

#### **b. Submission Timeframe**

SC stated that we are hoping to submit the project to the Scottish Government by the end of September. SC then said that there would be a postcard sent out to all residents to let them know that the project had been submitted and also to invite them to a 'Meet the Developer' day. SC commented that this would be an opportunity to view the Environmental Statement in detail and ask any further questions about the application before making a formal representation to the Energy Consents and Deployment Unit (ECDU) who will be the determining body.

#### **c. Next Steps**

SLJ stated that the Environmental statement is now in its final form but will be subject to a legal review before it is submitted. SLJ commented that we don't yet have a formal submission date but it is likely to be at the end of September.

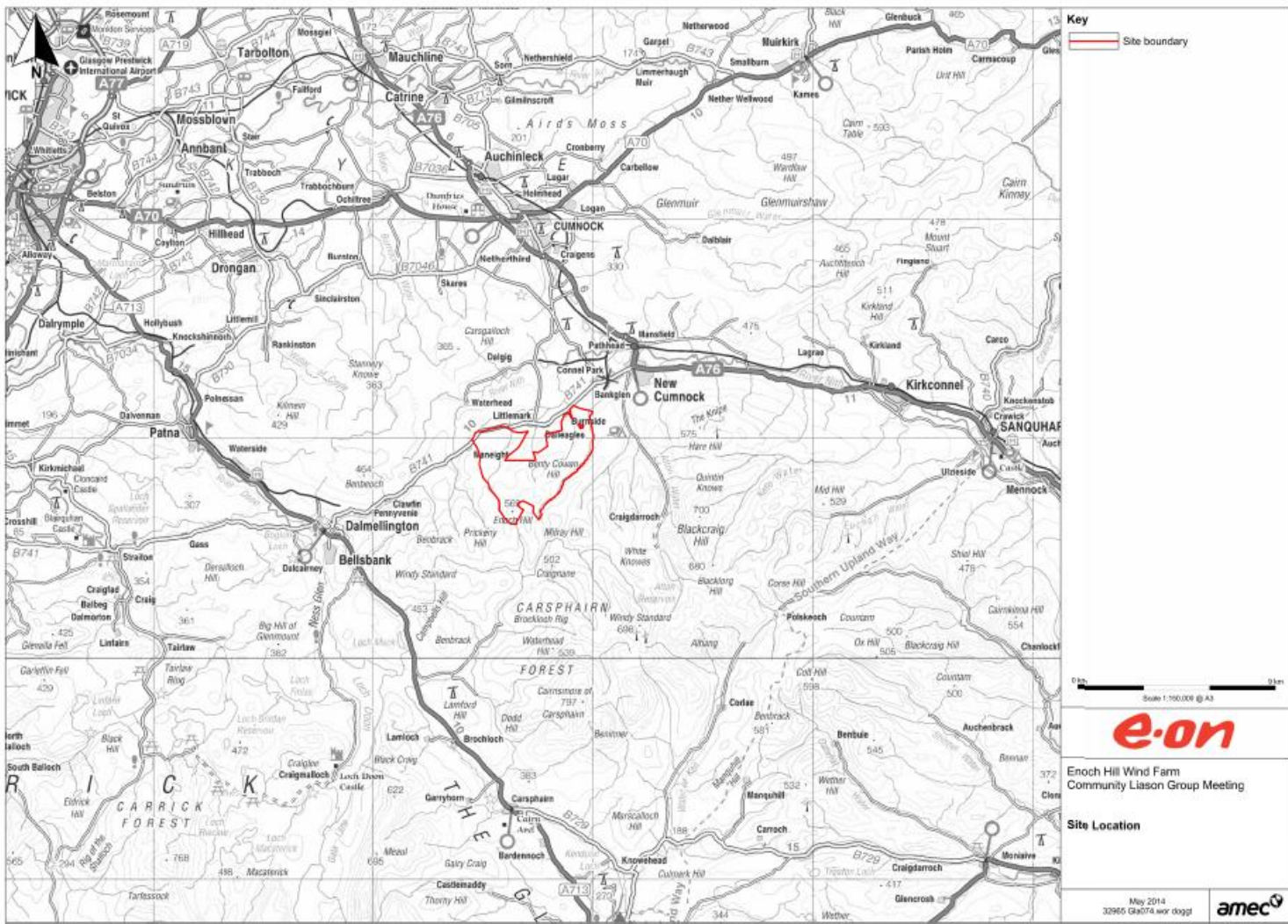
SLJ then asked if there were any questions. There were no questions from the group.

#### **6. AOB**

There was no AOB.

**END**

## Appendix VI – Site Map



Based upon the Ordnance Survey Map with the permission of the Controller of Her Majesty's Stationery Office. © Crown Copyright. 100001778



