



Key

- Proposed turbine location
- Landscape and Visual Study Area
Note: The study area is based on a 36.694km radius circle that allows a minimum of 35km distance from each of the proposed turbine locations
- Local authority boundaries
- 10km distance indicator from the proposed turbine locations
- 20km distance indicator from the proposed turbine locations
- 30km distance indicator from the proposed turbine locations
- 35km distance indicator from the proposed turbine locations

Notes:
 This figure has been based on the following parameters:
 Turbine layout file: LENOCH018.WFL
 Hub height: 80m
 Rotor diameter: 100m
 Height to blade tip: 130m

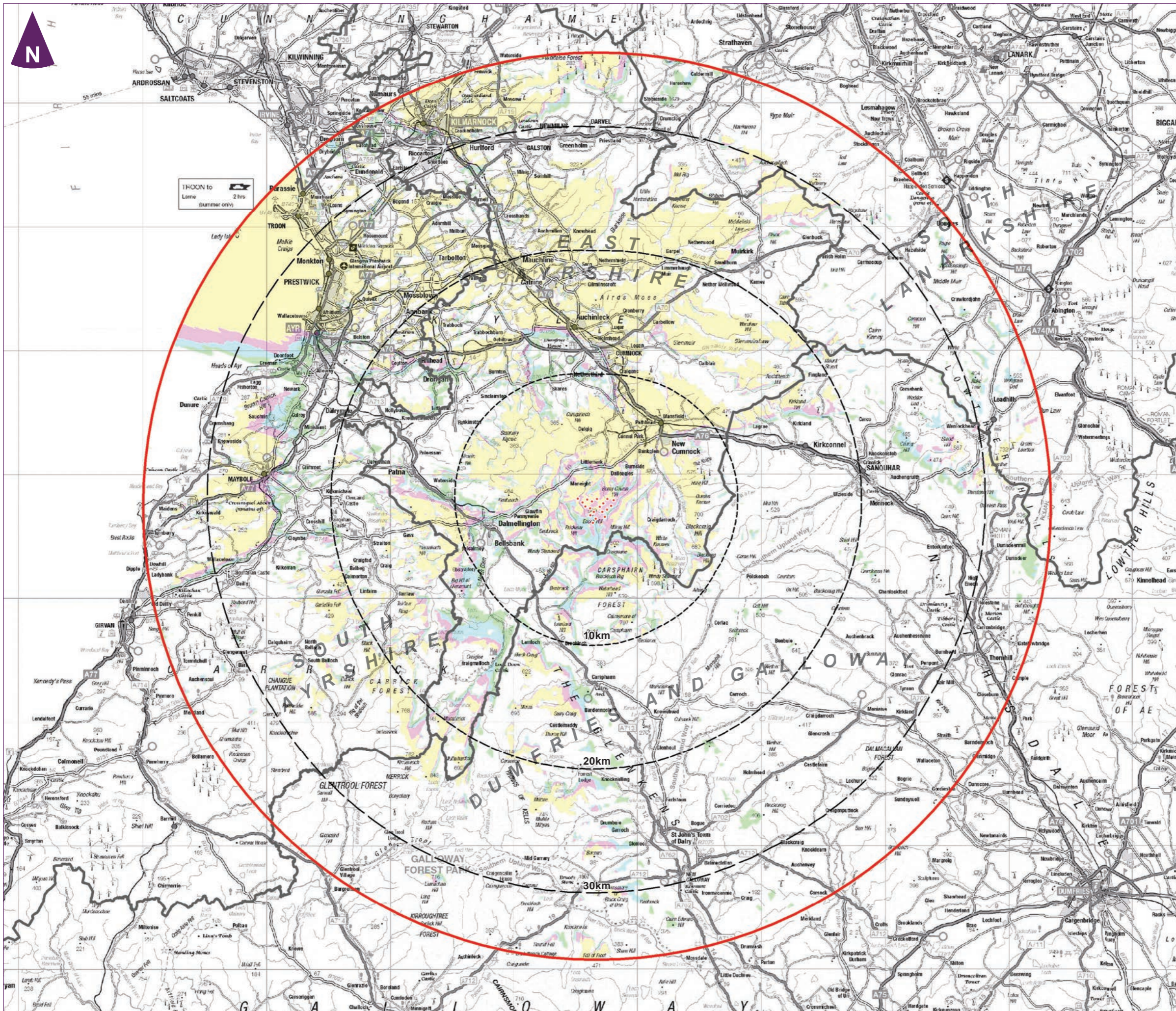


Client

Enoch Hill Wind Farm
 Environmental Statement



Figure 9.1
 Landscape and Visual Study Area



- Key**
- Proposed turbine location
 - Landscape and Visual Study Area
 - Local authority boundaries
 - 10km distance indicator from the proposed turbine locations
 - 20km distance indicator from the proposed turbine locations
 - 30km distance indicator from the proposed turbine locations
 - 1 - 4 Turbines may be theoretically visible
 - 5 - 9 Turbines may be theoretically visible
 - 10 - 14 Turbines may be theoretically visible
 - 15 - 19 Turbines may be theoretically visible

Notes:
 This figure has been based on the following parameters:
 Turbine layout file: LENOCH018.WFL
 Hub height: 80m
 Rotor diameter: 100m
 Height to blade tip: 130m



Client



Figure 9.2
Zone of Theoretical Visibility (ZTV) to Blade Tip



- Key**
- Proposed turbine location
 - Landscape and Visual Study Area
 - Local authority boundaries
 - 10km distance indicator from the proposed turbine locations
 - 20km distance indicator from the proposed turbine locations
 - 30km distance indicator from the proposed turbine locations
 - 1 - 4 Turbines may be theoretically visible
 - 5 - 9 Turbines may be theoretically visible
 - 10 - 14 Turbines may be theoretically visible
 - 15 - 19 Turbines may be theoretically visible

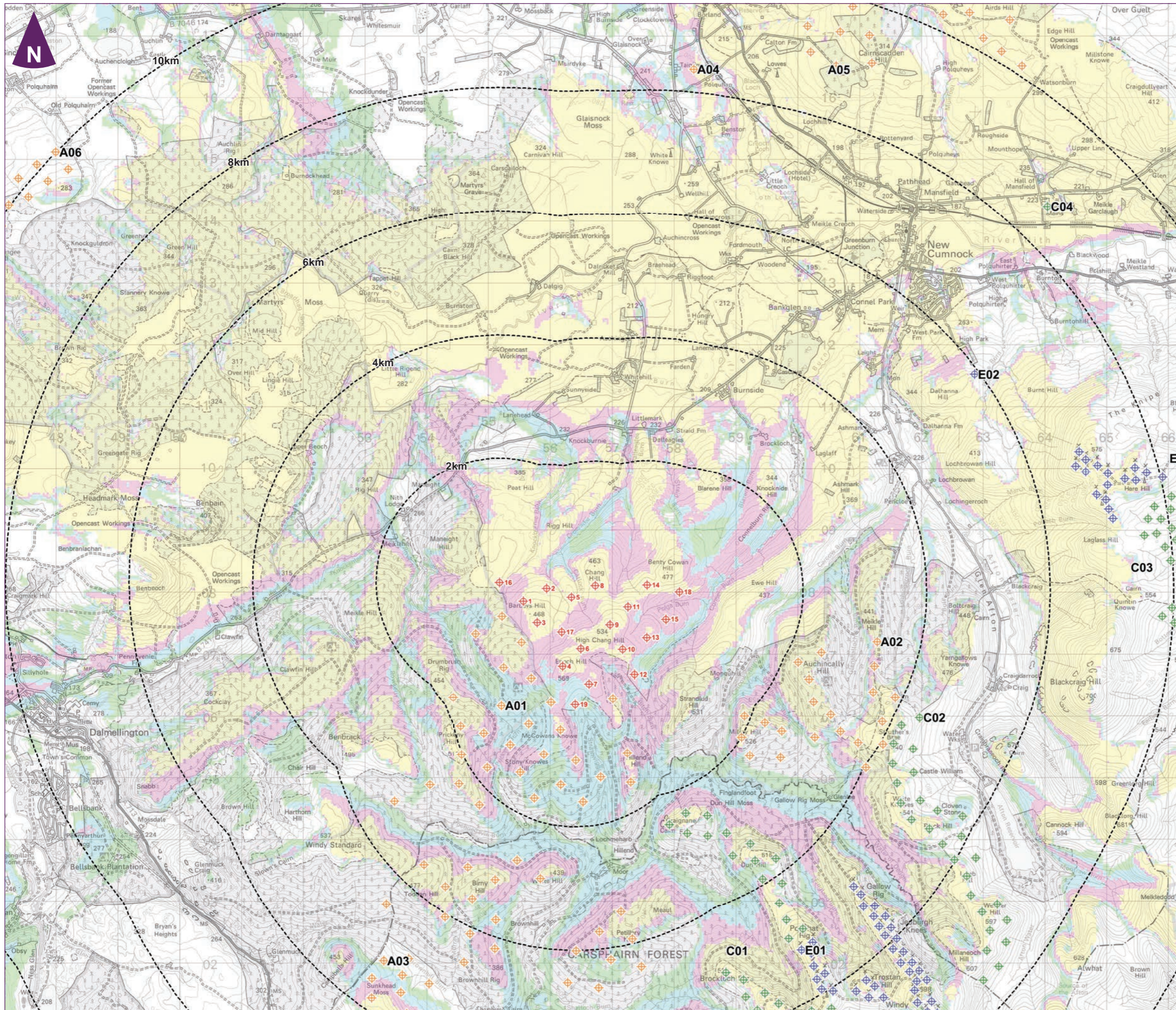
Notes:
 This figure has been based on the following parameters:
 Turbine layout file: LENOCH018.WFL
 Hub height: 80m
 Rotor diameter: 100m
 Height to blade tip: 130m



Client

Enoch Hill Wind Farm
 Environmental Statement

Figure 9.3
Zone of Theoretical Visibility (ZTV) to
Hub Height



Key

- Proposed turbine location
- 2km/4km/6km/8km/10km distance indicators from the proposed turbine locations
- 1 - 4 Turbines may be theoretically visible
- 5 - 9 Turbines may be theoretically visible
- 10 - 14 Turbines may be theoretically visible
- 15 - 19 Turbines may be theoretically visible
- Existing Wind Farms
- Consented Wind Farms
- Application Wind Farms

E01 Windy Standard	E03) Hare Hill
E02 High Park Farm	

Consented Wind Farms	
C01) Windy Standard Extension (Brockloch Rig)	C02) Afton
	C03) Hare Hill Extension
	C04) Mansfield Mains

Application Wind Farms	
A01) South Kyle	A04) Taiglim farm
A02) Pencloe	A05) High Cumnock
A03) Benbrack	A06) Polquhain

Notes:
 This figure has been based on the following parameters:
 Turbine layout file: LENOCH018.WFL
 Hub height: 80m
 Rotor diameter: 100m
 Height to blade tip: 130m



Client

**Enoch Hill Wind Farm
 Environmental Statement**

**Figure 9.4
 Detailed Zone of Theoretical Visibility (ZTV) to Blade Tip with Cumulative Wind Farms**