



Photomontage

View flat at a comfortable arm's length

OS reference:	E255 385, N601 853	Horizontal field of view:	53.5° (planar projection)	Camera:	Canon EOS 5D Mk2
Eye level:	336.5m AOD	Principal distance:	812.5mm	Lens:	50mm (Canon EF 50mm f/1.8)
Direction of view:	29°	Paper size:	841mm x 297mm (half A1)	Camera height:	1.5m AGL
Nearest turbine:	4.463m	Correct printed image size:	820 x 260mm	Date and time:	26/08/2014 14:06

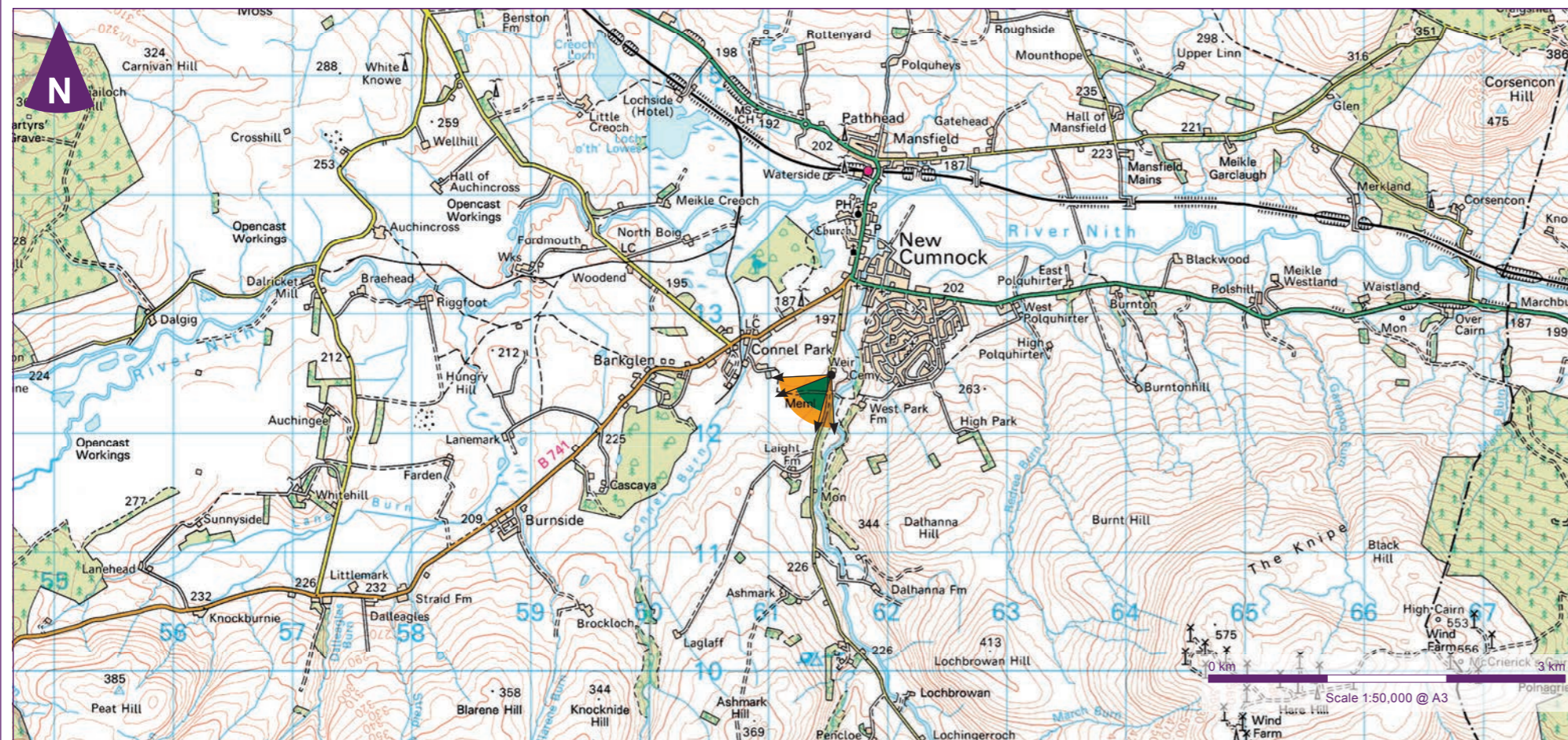
Enoch Hill Wind Farm
Environmental Statement



Figure 9.29d
Viewpoint 3: Core Path 667 Water of Deugh

May 2015

32965-GLA276.indd burtl



Viewpoint Parameters

OS reference:	E261 528, N612483
Ground Level Elevation:	210m AOD
Camera Height:	1.5m AGL
Direction of view to site centre ³ :	222°
Distance to nearest turbine:	5,639m
Number of blade tips theoretically visible ⁴ :	19
Number of hubs theoretically visible ⁴ :	18
Date and time of viewpoint photography:	11/06/2014 @ 11:40
Camera:	Canon EOS 5D Mk2
Lens:	50mm (Canon EF 50mm f/1.8)

Information on the limitations of visualisations:

Visualisations of wind farms have a number of limitations which you should be aware of when using them to form a judgement on a wind farm proposal. These include:

- A visualisation can never show exactly what the wind farm will look like in reality due to factors such as: different lighting, weather and seasonal conditions which vary through time and the resolution of the image;
- The images provided give a reasonable impression of the scale of the turbines and the distance to the turbines, but can never be 100% accurate;
- A static image cannot convey turbine movement, or flicker or reflection from the sun on the turbine blades as they move;
- The viewpoints illustrated are representative of views in the area, but cannot represent visibility at all locations;
- To form the best impression of the impacts of the wind farm proposal these images are best viewed at the viewpoint location shown;
- The images must be printed at the right size to be viewed properly (260mm by 820mm);
- You should hold the images flat at a comfortable arm's length. If viewing these images on a wall or board at an exhibition, you should stand at arm's length from the image presented.
- The ZTV presented here takes no account of the screening effects of vegetation or buildings.

Additional notes:

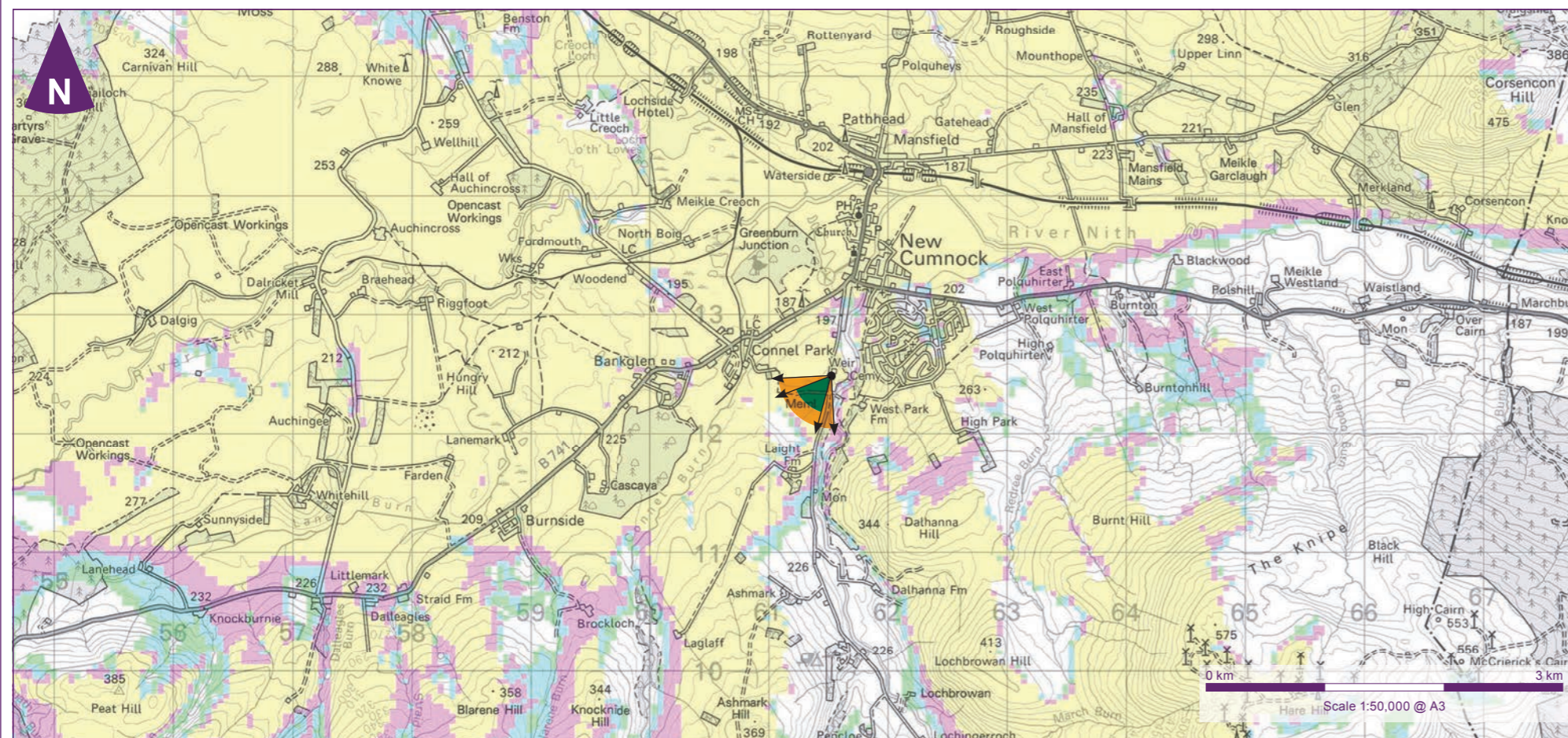
1. This figure has been based on the following parameters:
Turbine layout file: LENOCH018.WFL

Hub height: 80m • Rotor diameter: 100m • Height to blade tip: 130m

2. Turbine positions could be subject to micro-siting (typically up to 50m).

3. Direction given as bearing relative to Grid North (BNG).

4. The number of turbine blades and hubs theoretically visible is counted from the wireframe in sets of 3 and ignores the screening effects of any intervening objects and forestry.



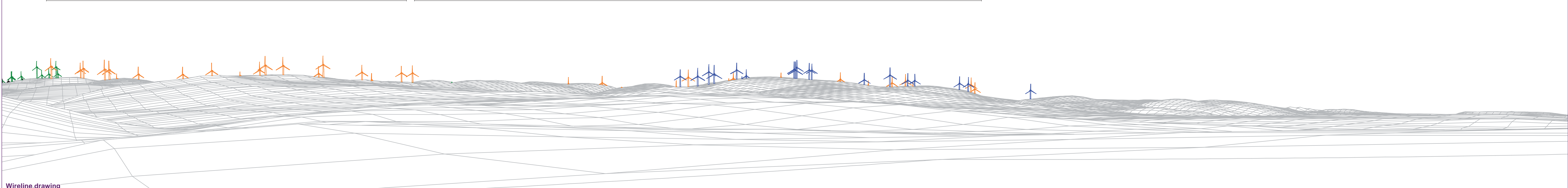
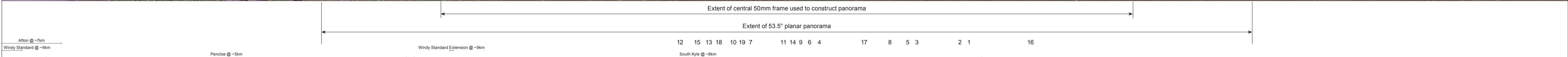
Key

	90° horizontal field of view		1 - 4 blade tips may be visible		10 - 14 blade tips may be visible
	53.5° horizontal field of view		5 - 9 blade tips may be visible		15 - 19 blade tips may be visible



Baseline photograph

This image provides landscape and visual context only



Wireline drawing

Wind Farm Key: Enoch Existing Consented Application

OS reference:	E261 528, N612483	Horizontal field of view:	90° (cylindrical projection)	Camera:	Canon EOS 5D Mk2
Eye level:	211.5m AOD	Principal distance:	522mm	Lens:	50mm (Canon EF 50mm f/1.8)
Direction of view:	222°	Paper size:	841mm x 297mm (half A1)	Camera height:	1.5m AGL
Nearest turbine:	5,639m	Correct printed image size:	820 x 130mm	Date and time:	11/06/2014 11:40

Enoch Hill Wind Farm
Environmental Statement

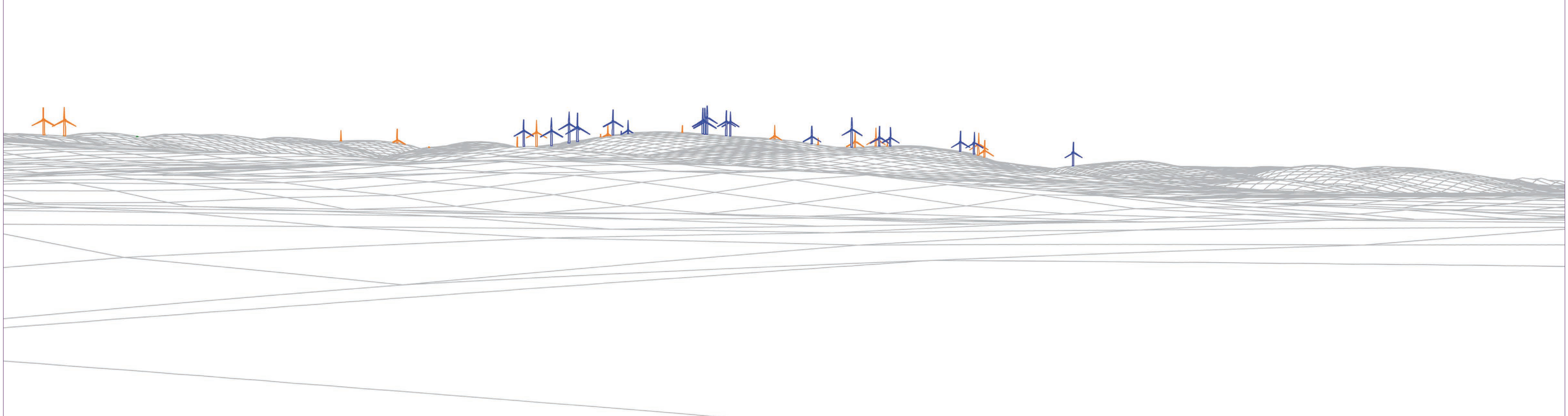


Figure 9.30b
Viewpoint 4: New Cumnock Cemetery

May 2015

12 15 13 18 10 19 7 11 14 9 6 4 17 8 5 3 2 1 16

Pencloe @ ~5km Windy Standard Extension @ ~9km South Kyle @ ~8km



Wireline drawing

View flat at a comfortable arm's length

Wind Farm Key: Enoch Existing Consented Application

OS reference: E261 528, N612483
 Eye level: 211.5m AOD
 Direction of view: 222°
 Nearest turbine: 5,639m

Horizontal field of view: 53.5° (planar projection)
 Principal distance: 812.5mm
 Paper size: 841mm x 297mm (half A1)
 Correct printed image size: 820 x 260mm

Camera: Canon EOS 5D Mk2
 Lens: 50mm (Canon EF 50mm f/1.8)
 Camera height: 1.5m AGL
 Date and time: 11/06/2014 11:40

Enoch Hill Wind Farm
 Environmental Statement



Figure 9.30c
 Viewpoint 4: New Cumnock Cemetery

May 2015



Photomontage

View flat at a comfortable arm's length

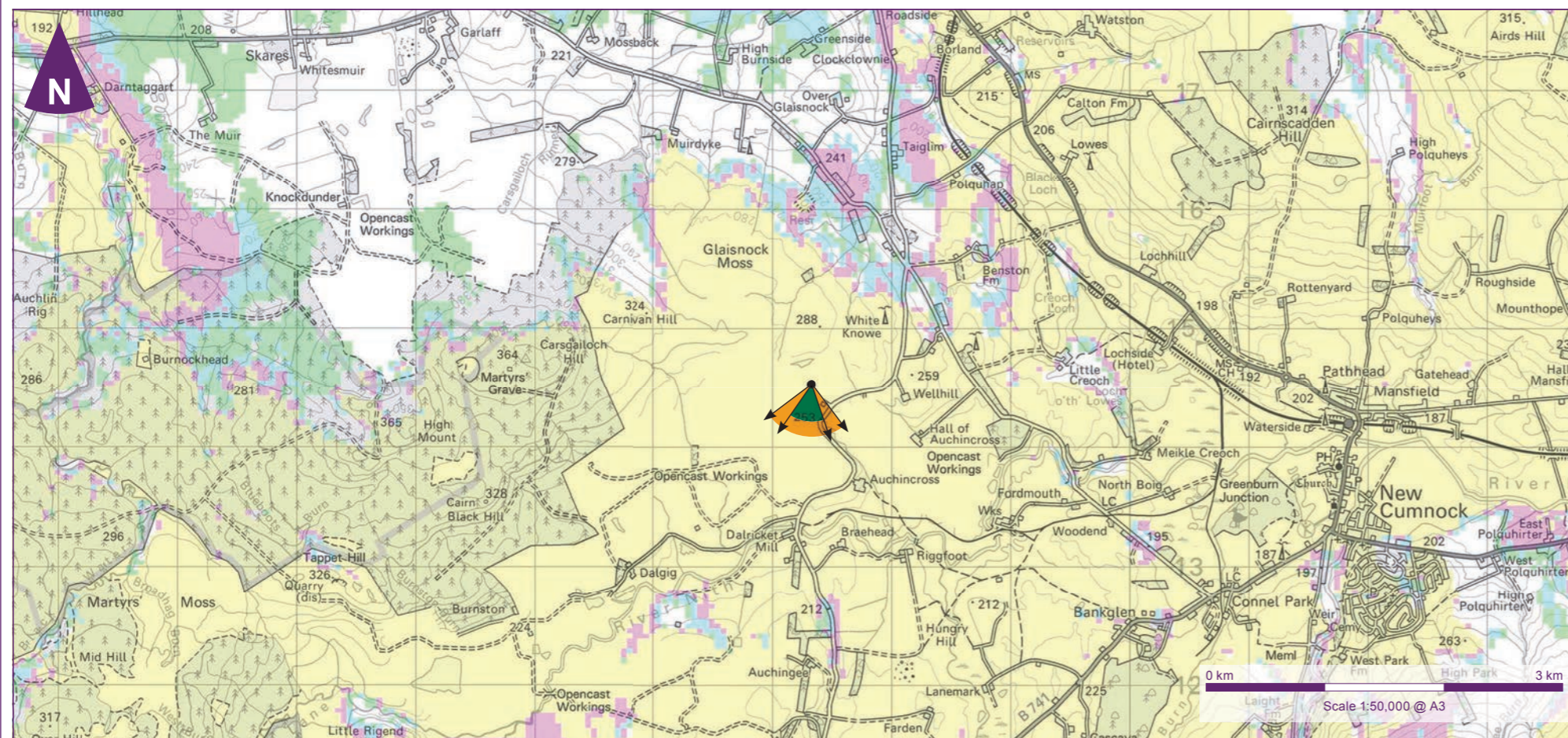
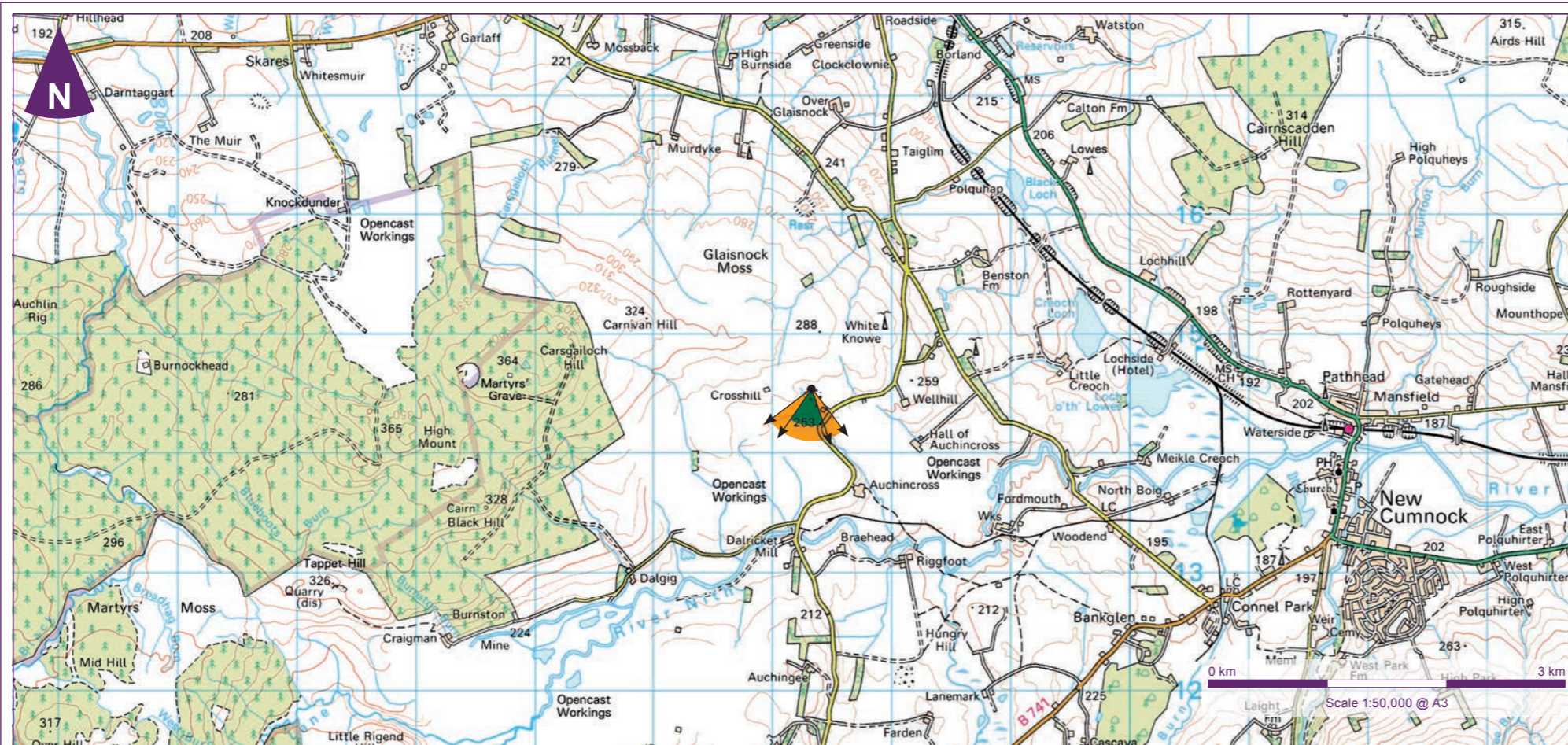
OS reference:	E261 528, N612483	Horizontal field of view:	53.5° (planar projection)	Camera:	Canon EOS 5D Mk2
Eye level:	211.5m AOD	Principal distance:	812.5mm	Lens:	50mm (Canon EF 50mm f/1.8)
Direction of view:	222°	Paper size:	841mm x 297mm (half A1)	Camera height:	1.5m AGL
Nearest turbine:	5,639m	Correct printed image size:	820 x 260mm	Date and time:	11/06/2014 11:40

Enoch Hill Wind Farm
Environmental Statement









Figure 9.30d
Viewpoint 4: New Cumnock Cemetery

May 2015



Key

	90° horizontal field of view		1 - 4 blade tips may be visible		10 - 14 blade tips may be visible
	53.5° horizontal field of view		5 - 9 blade tips may be visible		15 - 19 blade tips may be visible

Viewpoint Parameters

OS reference:	E257 327, N614 519
Ground Level Elevation:	267m AOD
Camera Height:	1.5m AGL
Direction of view to site centre ³ :	188°
Distance to nearest turbine:	6,398m
Number of blade tips theoretically visible ⁴ :	19
Number of hubs theoretically visible ⁴ :	18
Date and time of viewpoint photography:	10/06/2015 @ 13:00
Camera:	Canon EOS 5D Mk2
Lens:	50mm (Canon EF 50mm f/1.8)

Information on the limitations of visualisations:

Visualisations of wind farms have a number of limitations which you should be aware of when using them to form a judgement on a wind farm proposal. These include:

- A visualisation can never show exactly what the wind farm will look like in reality due to factors such as: different lighting, weather and seasonal conditions which vary through time and the resolution of the image;
- The images provided give a reasonable impression of the scale of the turbines and the distance to the turbines, but can never be 100% accurate;
- A static image cannot convey turbine movement, or flicker or reflection from the sun on the turbine blades as they move;
- The viewpoints illustrated are representative of views in the area, but cannot represent visibility at all locations;
- To form the best impression of the impacts of the wind farm proposal these images are best viewed at the viewpoint location shown;
- The images must be printed at the right size to be viewed properly (260mm by 820mm);
- You should hold the images flat at a comfortable arm's length. If viewing these images on a wall or board at an exhibition, you should stand at arm's length from the image presented.
- The ZTV presented here takes no account of the screening effects of vegetation or buildings.

Additional notes:

1. This figure has been based on the following parameters:
Turbine layout file: LENOCH018.WFL

Hub height: 80m • Rotor diameter: 100m • Height to blade tip: 130m

2. Turbine positions could be subject to micro-siting (typically up to 50m).

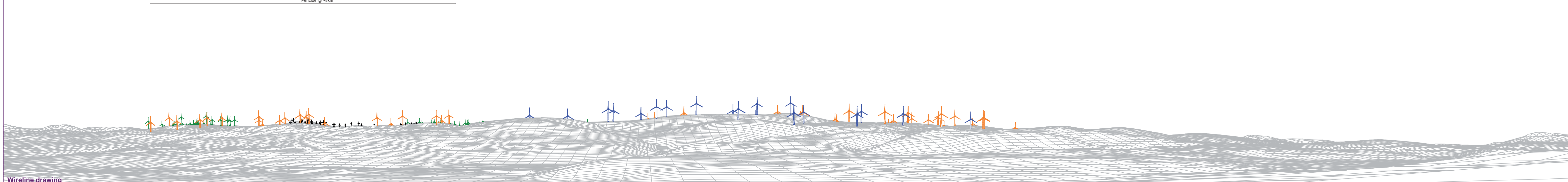
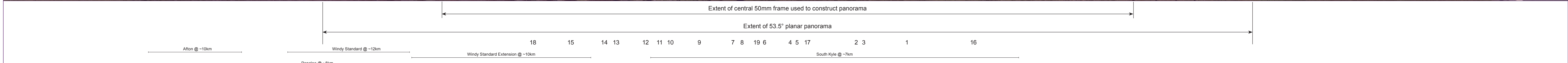
3. Direction given as bearing relative to Grid North (BNG).

4. The number of turbine blades and hubs theoretically visible is counted from the wireframe in sets of 3 and ignores the screening effects of any intervening objects and forestry.

Enoch Hill Wind Farm
Environmental Statement



Figure 9.31a
Viewpoint 5: Highpoint north of site (near Auchincross)



Wireline drawing	Wind Farm Key: Enoch Existing Consented Application	OS reference:	E257 327, N614 519	Horizontal field of view:	90° (cylindrical projection)	Camera:	Canon EOS 5D Mk2
		Eye level:	288.5m AOD	Principal distance:	522mm	Lens:	50mm (Canon EF 50mm f/1.8)
		Direction of view:	188°	Paper size:	841mm x 297mm (half A1)	Camera height:	1.5m AGL
		Nearest turbine:	6,398m	Correct printed image size:	820 x 130mm	Date and time:	10/06/2015 13:00

Enoch Hill Wind Farm
Environmental Statement

Figure 9.31b
Viewpoint 5: Highpoint north of site (near Auchincross)

May 2015

32965-GLA279.indd loves

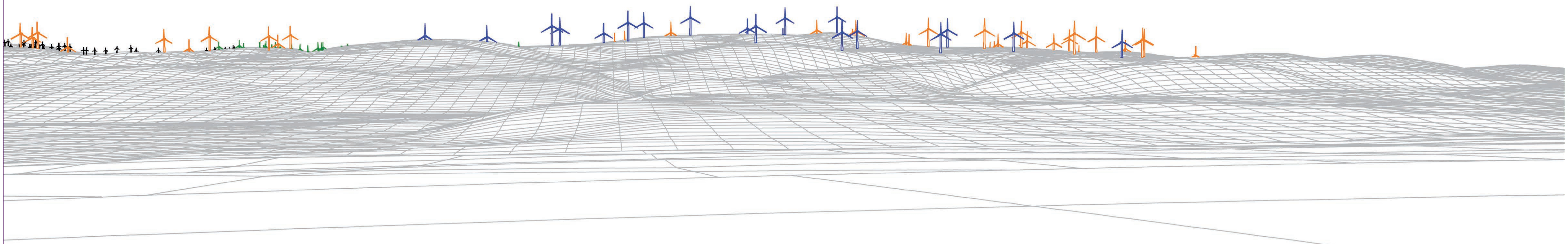
18 15 14 13 12 11 10 9 7 8 19 6 4 5 17 2 3 1 16

Windy Standard @ ~12km

Windy Standard Extension @ ~10km

South Kyle @ ~7km

Pencloe @ ~8km



Wireline drawing

View flat at a comfortable arm's length

Wind Farm Key: Enoch Existing Consented Application

OS reference: E257 327, N614 519
 Eye level: 268.5m AOD
 Direction of view: 188°
 Nearest turbine: 6,398m

Horizontal field of view: 53.5° (planar projection)
 Principal distance: 812.5mm
 Paper size: 841mm x 297mm (half A1)
 Correct printed image size: 820 x 260mm

Camera: Canon EOS 5D Mk2
 Lens: 50mm (Canon EF 50mm f/1.8)
 Camera height: 1.5m AGL
 Date and time: 10/06/2015 13:00

Enoch Hill Wind Farm
 Environmental Statement



Figure 9.31c
 Viewpoint 5: Highpoint north of site (near Auchincross)

May 2015

32965-GLA279.indd loves



Photomontage

View flat at a comfortable arm's length

OS reference:	E257 327, N614 519	Horizontal field of view:	53.5° (planar projection)	Camera:	Canon EOS 5D Mk2
Eye level:	268.5m AOD	Principal distance:	812.5mm	Lens:	50mm (Canon EF 50mm f/1.8)
Direction of view:	188°	Paper size:	841mm x 297mm (half A1)	Camera height:	1.5m AGL
Nearest turbine:	6,398m	Correct printed image size:	820 x 260mm	Date and time:	10/06/2015 13:00

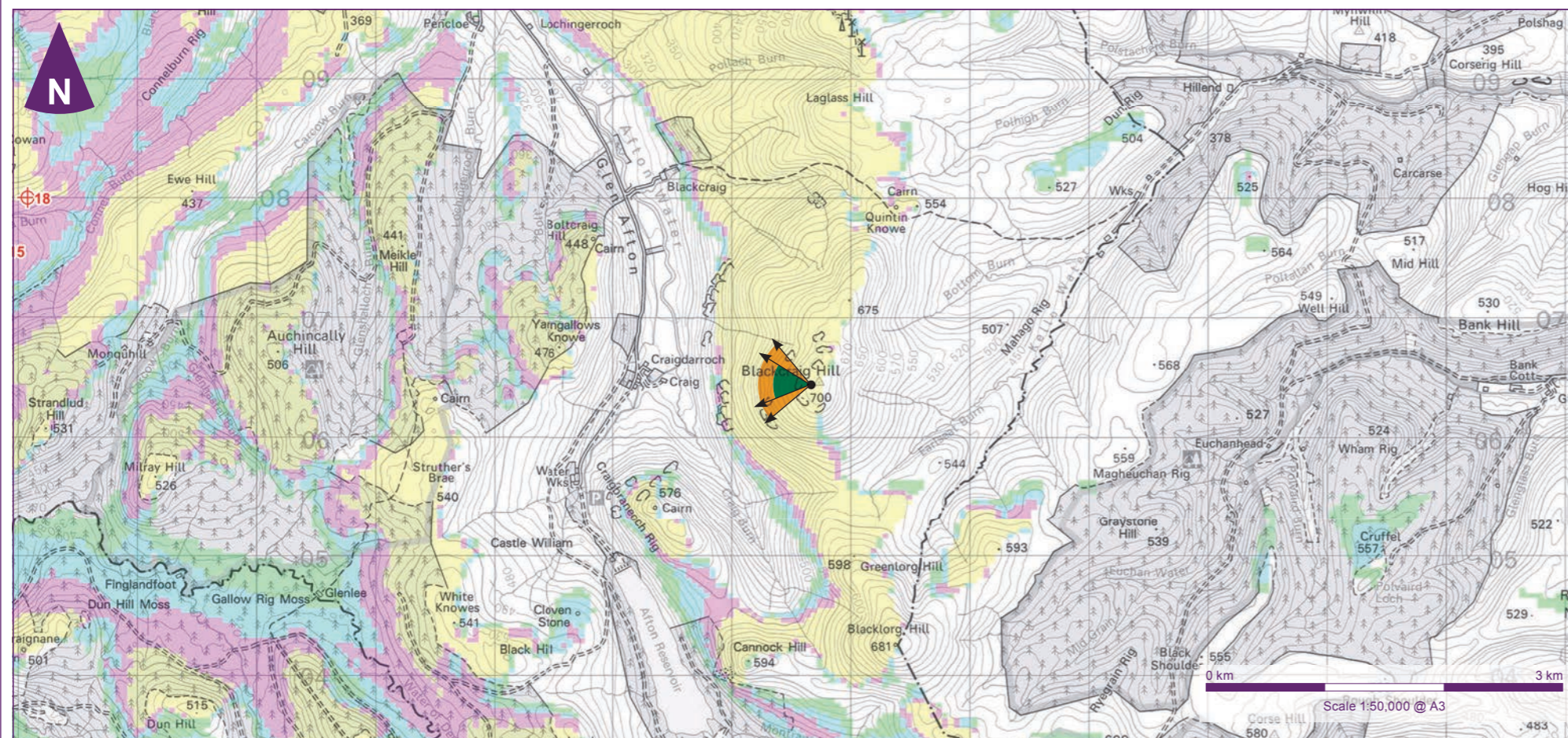
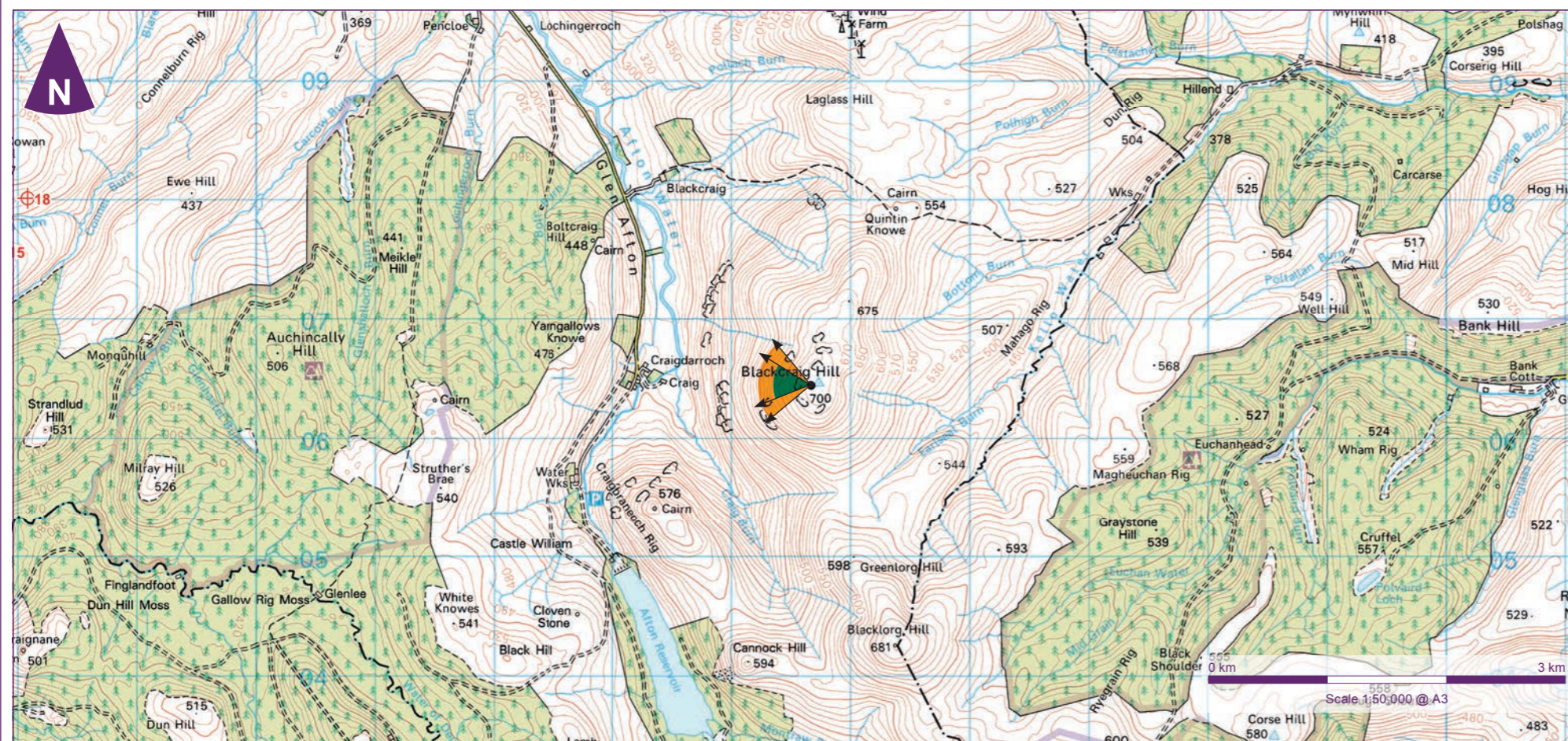
Enoch Hill Wind Farm
Environmental Statement









Figure 9.31d
Viewpoint 5: Highpoint north of site (near Auchinross)

May 2015

32965-GLA279.indd loves



Key

	90° horizontal field of view		1 - 4 blade tips may be visible		10 - 14 blade tips may be visible
	53.5° horizontal field of view		5 - 9 blade tips may be visible		15 - 19 blade tips may be visible

Viewpoint Parameters

OS reference:	E264 669, N606 435
Ground Level Elevation:	694m AOD
Camera Height:	1.5m AGL
Direction of view to site centre ³ :	275°
Distance to nearest turbine:	6,771m
Number of blade tips theoretically visible ⁴ :	19
Number of hubs theoretically visible ⁴ :	19
Date and time of viewpoint photography:	19/11/2013 @ 12:10
Camera:	Canon EOS 5D Mk2
Lens:	50mm (Canon EF 50mm f/1.8)

Information on the limitations of visualisations:

Visualisations of wind farms have a number of limitations which you should be aware of when using them to form a judgement on a wind farm proposal. These include:

- A visualisation can never show exactly what the wind farm will look like in reality due to factors such as: different lighting, weather and seasonal conditions which vary through time and the resolution of the image;
- The images provided give a reasonable impression of the scale of the turbines and the distance to the turbines, but can never be 100% accurate;
- A static image cannot convey turbine movement, or flicker or reflection from the sun on the turbine blades as they move;
- The viewpoints illustrated are representative of views in the area, but cannot represent visibility at all locations;
- To form the best impression of the impacts of the wind farm proposal these images are best viewed at the viewpoint location shown;
- The images must be printed at the right size to be viewed properly (260mm by 820mm);
- You should hold the images flat at a comfortable arm's length. If viewing these images on a wall or board at an exhibition, you should stand at arm's length from the image presented.
- The ZTV presented here takes no account of the screening effects of vegetation or buildings.

Additional notes:

1. This figure has been based on the following parameters:
Turbine layout file: LENOCH018.WFL

Hub height: 80m • Rotor diameter: 100m • Height to blade tip: 130m

2. Turbine positions could be subject to micro-siting (typically up to 50m).

3. Direction given as bearing relative to Grid North (BNG).

4. The number of turbine blades and hubs theoretically visible is counted from the wireframe in sets of 3 and ignores the screening effects of any intervening objects and forestry.

Enoch Hill Wind Farm
Environmental Statement



Figure 9.32a
Viewpoint 6: Blackcraig Hill South of New Cumnock