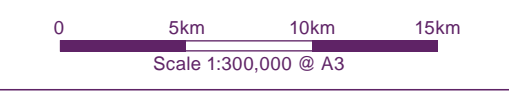


Key

- Proposed Turbine Location
- Council Boundaries
- Landscape and Visual Study Area
- 10km distance indicator from the proposed turbine locations
- 20km distance indicator from the proposed turbine locations
- 30km distance indicator from the proposed turbine locations
- Wild land areas (June 2014)
- Viewpoints
 - ES Viewpoints
 - 18) Shalloch on Minnoch
 - 20) Kirrieroch Hill
 - 21) Merrick
- Wild Land Viewpoint 1: Craigfionn

See figure 9.2 for ZTV key

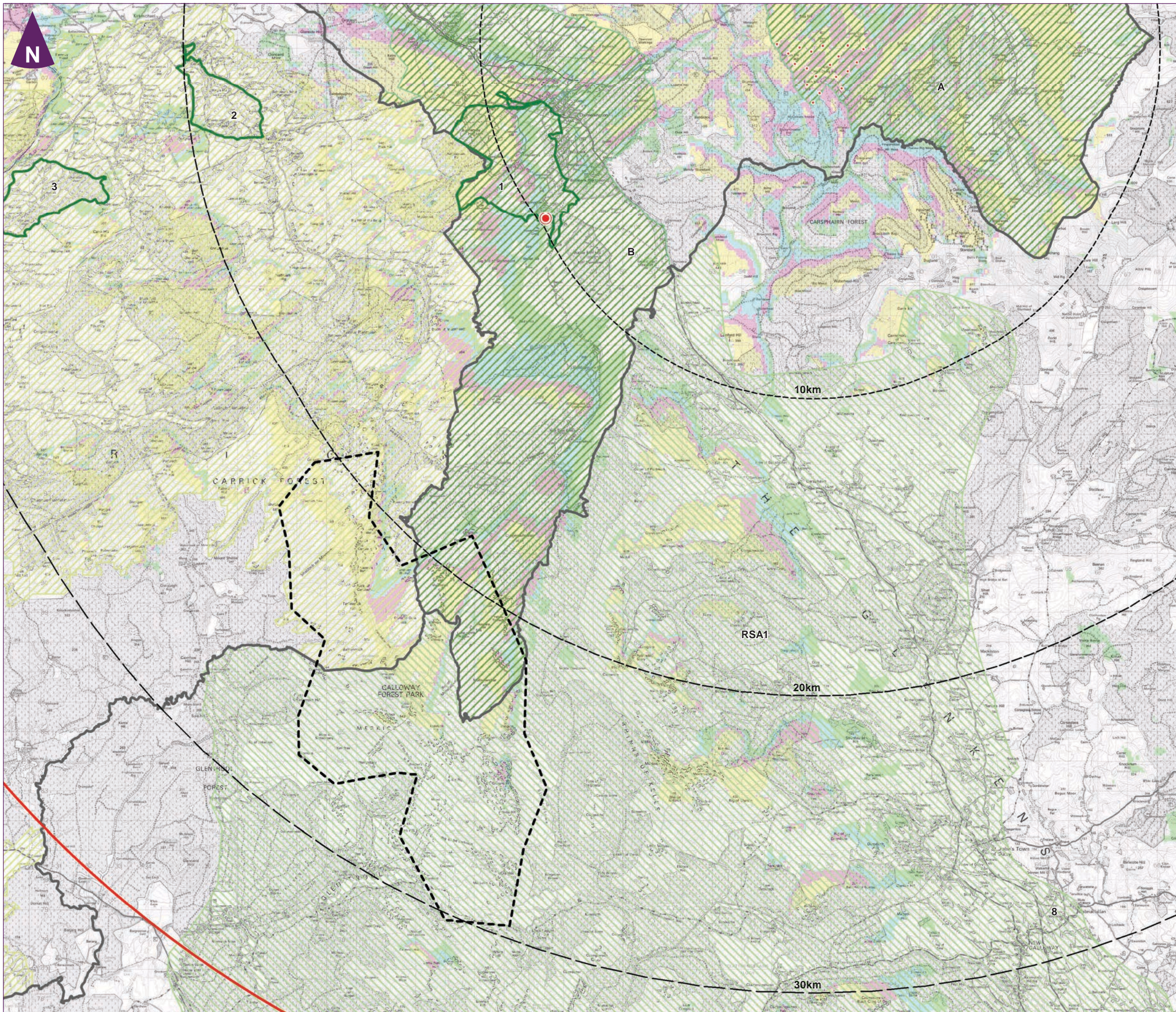
Notes:
 This figure has been based on the following parameters:
 Turbine layout file: LENOCH018.WFL
 Hub height: 80m
 Rotor diameter: 100m
 Height to blade tip: 130m



Client

Enoch Hill Wind Farm
 Environmental Statement

Figure 9.53
 Wild Land Assessment Areas



Key

-  Proposed Turbine Location
-  Landscape and Visual Study Area
-  Local authority boundaries
-  10km / 20km / 30km distance indicator from the proposed turbine locations
-  East Ayrshire Sensitive Landscape Character Areas (SLCA)
 A) Afton SLCA
 B) Doon Valley SLCA
Note: Sourced from <http://maps.ayrshire.gov.uk/mapsAJP/map/WindfarmSearch.htm>
-  South Ayrshire Regional Scenic Area
Note: Sourced from www.south-ayrshire.gov.uk
-  Dumfries and Galloway Regional Scenic Areas
 RSA1) Galloway Hills
Note: Sourced from "Dumfries and Galloway Proposed Local Development Plan, Technical Paper Regional Scenic Areas, Jan 2013"
-  Gardens and Designed Landscapes
 1) Craiggengillan
 2) Kilkerran
 3) Bargany
-  Dark Sky Observatory
-  Wild land areas (June 2014)

See figure 9.2 for ZTV key

Notes:
 This figure has been based on the following parameters:
 Turbine layout file: LENOCH018.WFL
 Hub height: 80m
 Rotor diameter: 100m
 Height to blade tip: 130m

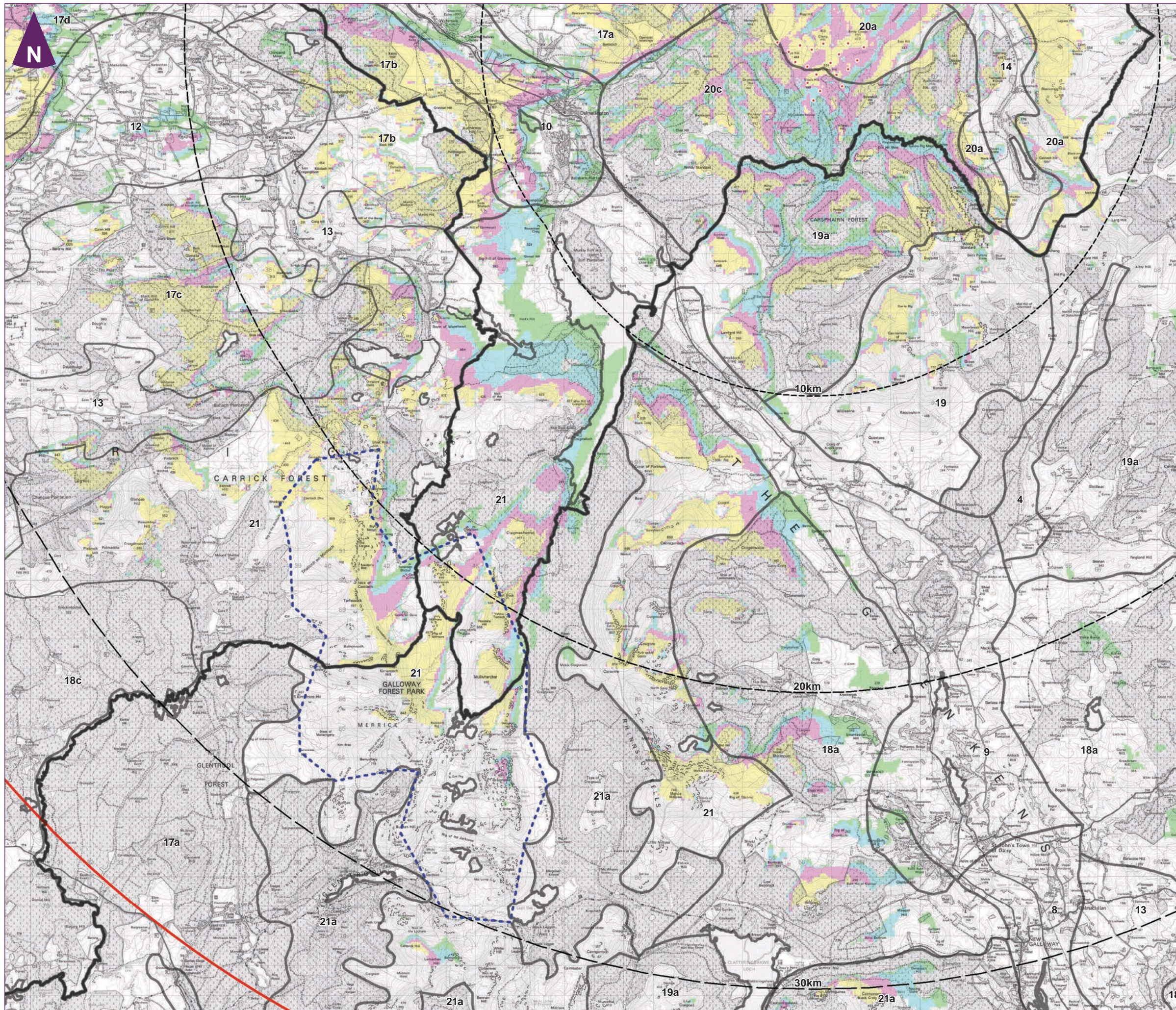
0 1 2 3 4 5 6km
 Scale 1:125,000 @ A3

Client

**Enoch Hill Wind Farm
 Environmental Statement**



**Figure 9.54
 ZTV and Landscape Designations**



Key

- Proposed Turbine Location
- Landscape and Visual Study Area
- Boundary of regional landscape character assessment areas
- 10km / 20km / 30km distance indicator from the proposed turbine locations
- Wild land areas (June 2014)
- Landscape areas

South Ayrshire Landscape Wind Capacity Study (Carol Anderson, July 2013)

- 12) Middle Dale
- 13) Intimate Pastoral Valley
- 17b) Foothills with Forest west of Doon Valley
- 17c) Foothills with Forest & Wind Farm
- 17d) Maybole Foothills
- 18c) South Ayrshire Plateau Moorlands + Forestry + Wind Farms
- 21) Rugged Uplands, Lochs & Forest

Dumfries and Galloway Wind Farm Landscape Capacity Study (Carol Anderson & Alison Grant, January 2011)

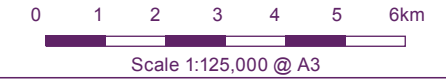
- 8) Flooded Valley
- 9) Upper Dales
- 13) Drumlin Pastures
- 17a) Plateau With Forest
- 18a) Foothills + Forestry
- 19) Southern Uplands
- 19a) Southern Uplands + Forestry
- 21) Rugged Granite Uplands
- 21a) Rugged Granite Uplands + Forestry

East Ayrshire Landscape Wind Capacity Study (Carol Anderson, July 2013)

- 10) Upland River Valley
- 21) Rugged Uplands, Loch & Forest
- 14) Upland Glen
- 17a) Foothills with Forestry & Opencast Mining
- 17b) Foothills with Forest west of Doon Valley
- 20a) East Ayrshire Southern Uplands
- 20c) Southern Uplands and Forestry
- 21) Rugged Uplands, Lochs & Forest

See figure 9.2 for ZTV key

Notes:
 This figure has been based on the following parameters:
 Turbine layout file: LENOCH018.WFL
 Hub height: 80m
 Rotor diameter: 100m
 Height to blade tip: 130m

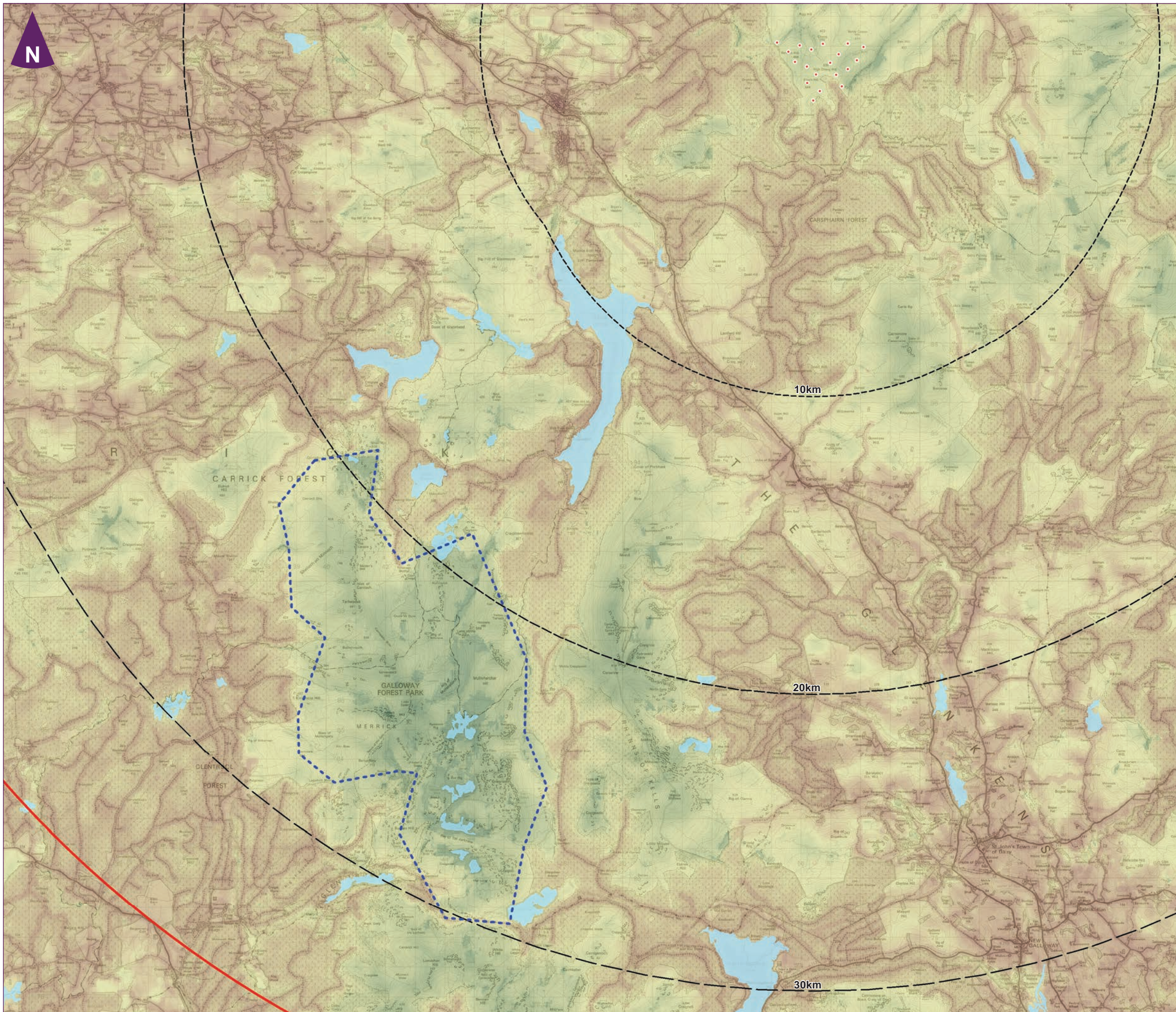


Client

Enoch Hill Wind Farm
 Environmental Statement



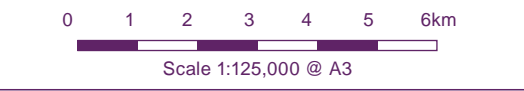
Figure 9.55
 Landscape Character



Key

- Proposed Turbine Location
- Landscape and Visual Study Area
- 10km distance indicator from the proposed turbine locations
- 20km distance indicator from the proposed turbine locations
- 30km distance indicator from the proposed turbine locations
- Lochs
- Level of Relative Wildness**
- High
- Low
- Wild land areas (June 2014)

Notes:
 This figure has been based on the following parameters:
 Turbine layout file: LENOCH018.WFL
 Hub height: 80m
 Rotor diameter: 100m
 Height to blade tip: 130m



Client

**Enoch Hill Wind Farm
 Environmental Statement**

**Figure 9.56
 Relative Wildness**