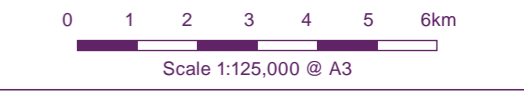


Key

- Proposed Turbine Location
- Landscape and Visual Study Area
- 10km distance indicator from the proposed turbine locations
- 20km distance indicator from the proposed turbine locations
- 30km distance indicator from the proposed turbine locations
- Lochs
- Level of Rugged or Challenging Terrain
- High
- Low
- Wild land areas (June 2014)

Notes:
 This figure has been based on the following parameters:
 Turbine layout file: LENOCH018.WFL
 Hub height: 80m
 Rotor diameter: 100m
 Height to blade tip: 130m



Client

**Enoch Hill Wind Farm
 Environmental Statement**

**Figure 9.57
 Rugged or Challenging Terrain**



Key

- Proposed Turbine Location
- Landscape and Visual Study Area
- 10km distance indicator from the proposed turbine locations
- 20km distance indicator from the proposed turbine locations
- 30km distance indicator from the proposed turbine locations
- Lochs
- Level of Absence of Modern Artefacts**
- High
- Low
- Wild land areas (June 2014)

Notes:
 This figure has been based on the following parameters:
 Turbine layout file: LENOCH018.WFL
 Hub height: 80m
 Rotor diameter: 100m
 Height to blade tip: 130m

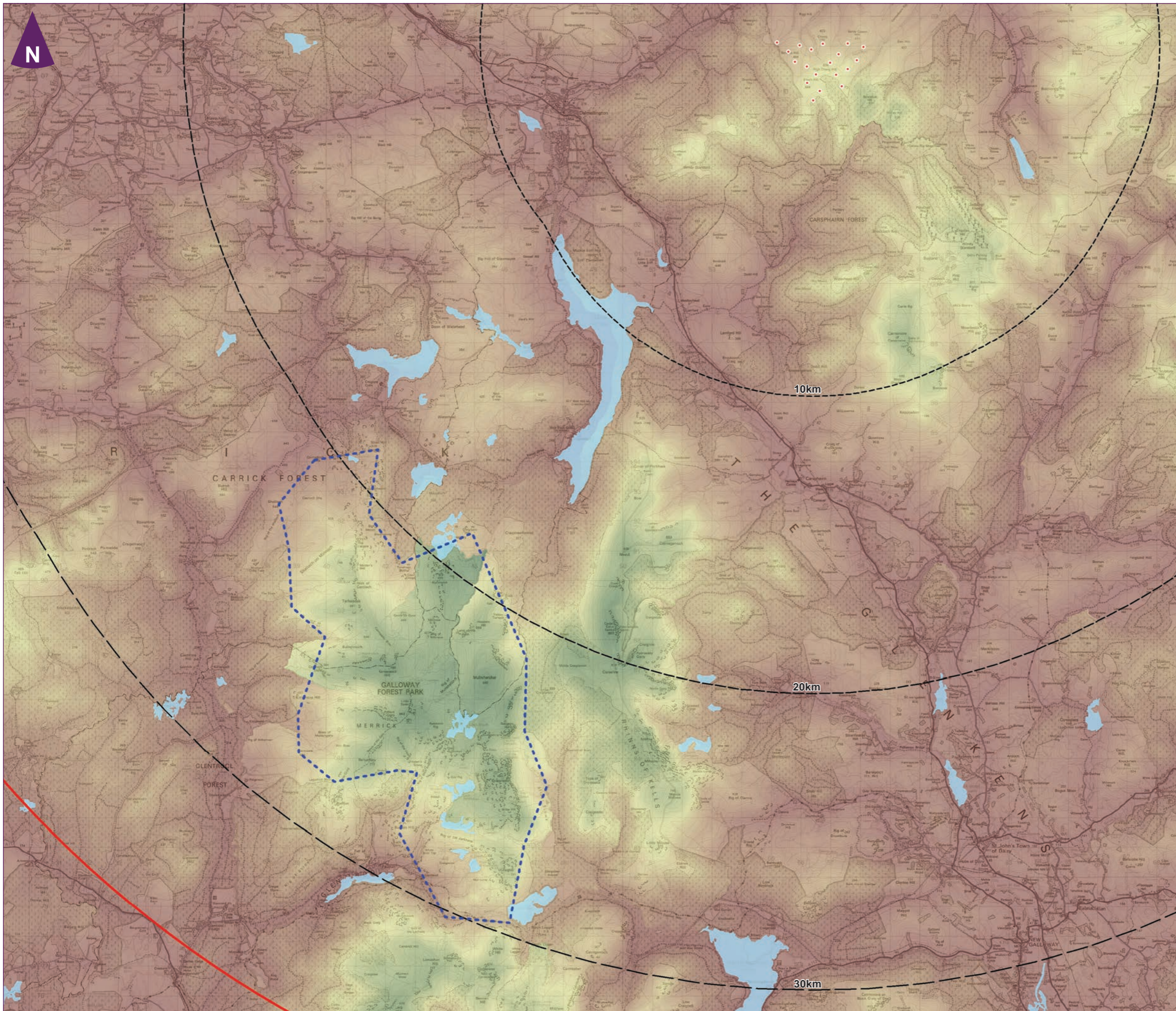
0 1 2 3 4 5 6km
 Scale 1:125,000 @ A3

Client

Enoch Hill Wind Farm
 Environmental Statement



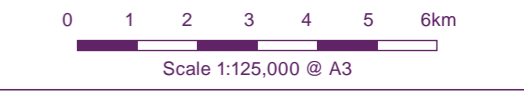
Figure 9.58
Absence of Modern Artefacts



Key

- Proposed Turbine Location
- Landscape and Visual Study Area
- 10km distance indicator from the proposed turbine locations
- 20km distance indicator from the proposed turbine locations
- 30km distance indicator from the proposed turbine locations
- Lochs
- Level of Remoteness from roads and ferries**
- High
- Low
- Wild land areas (June 2014)

Notes:
 This figure has been based on the following parameters:
 Turbine layout file: LENOCH018.WFL
 Hub height: 80m
 Rotor diameter: 100m
 Height to blade tip: 130m

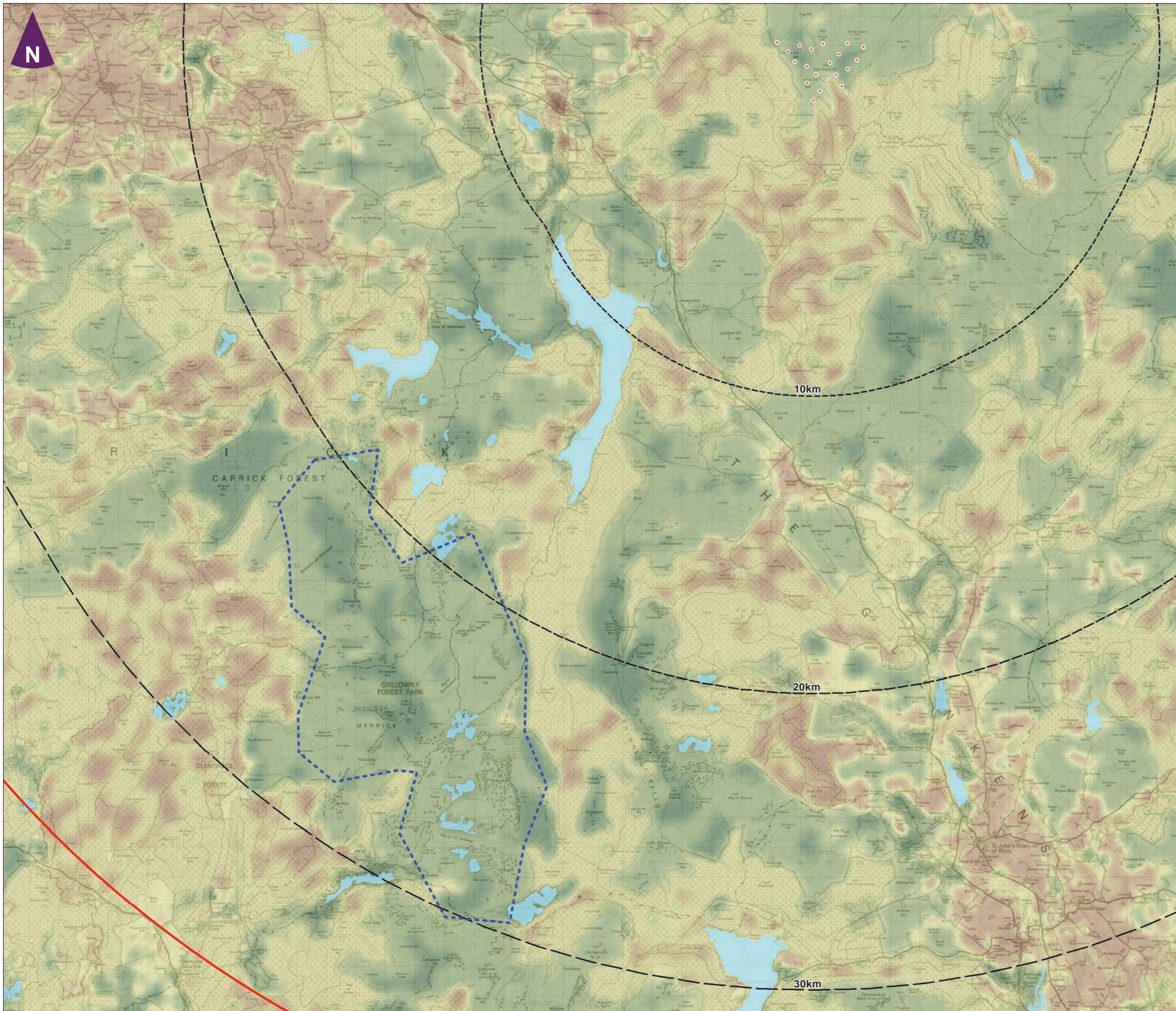


Client

**Enoch Hill Wind Farm
 Environmental Statement**

amec
 foster
 wheeler

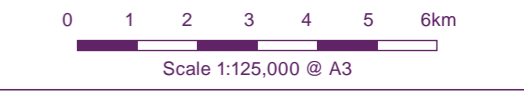
**Figure 9.59
 Remoteness from Roads and Ferries**



Key

- Proposed Turbine Location
- Landscape and Visual Study Area
- 10km distance indicator from the proposed turbine locations
- 20km distance indicator from the proposed turbine locations
- 30km distance indicator from the proposed turbine locations
- Lochs
- Level of Perceived Naturalness**
- High
- Low
- Wild land areas (June 2014)

Notes:
 This figure has been based on the following parameters:
 Turbine layout file: LENOCH018.WFL
 Hub height: 80m
 Rotor diameter: 100m
 Height to blade tip: 130m



Client

**Enoch Hill Wind Farm
 Environmental Statement**

amec
 foster
 wheeler

**Figure 9.60
 Perceived Naturalness**