

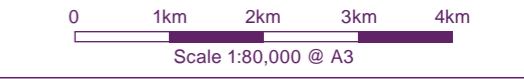
Key

- Proposed turbine location
- 2km/4km/6km/8km/10km distance indicators from the proposed turbine locations
- Application wind farms

A01) South Kyle A04) Benbrack

- Enoch wind farm may be theoretically visible
- South Kyle wind farm may be theoretically visible
- Benbrack wind farm may be theoretically visible
- Enoch and South Kyle may be theoretically visible
- Enoch and Benbrack may be theoretically visible
- South Kyle and Benbrack may be theoretically visible
- Enoch, South Kyle and Benbrack may be theoretically visible

Notes:
 This figure has been based on the following parameters:
 Turbine layout file: LENOCH018.WFL
 Hub height: 80m
 Rotor diameter: 100m
 Height to blade tip: 130m

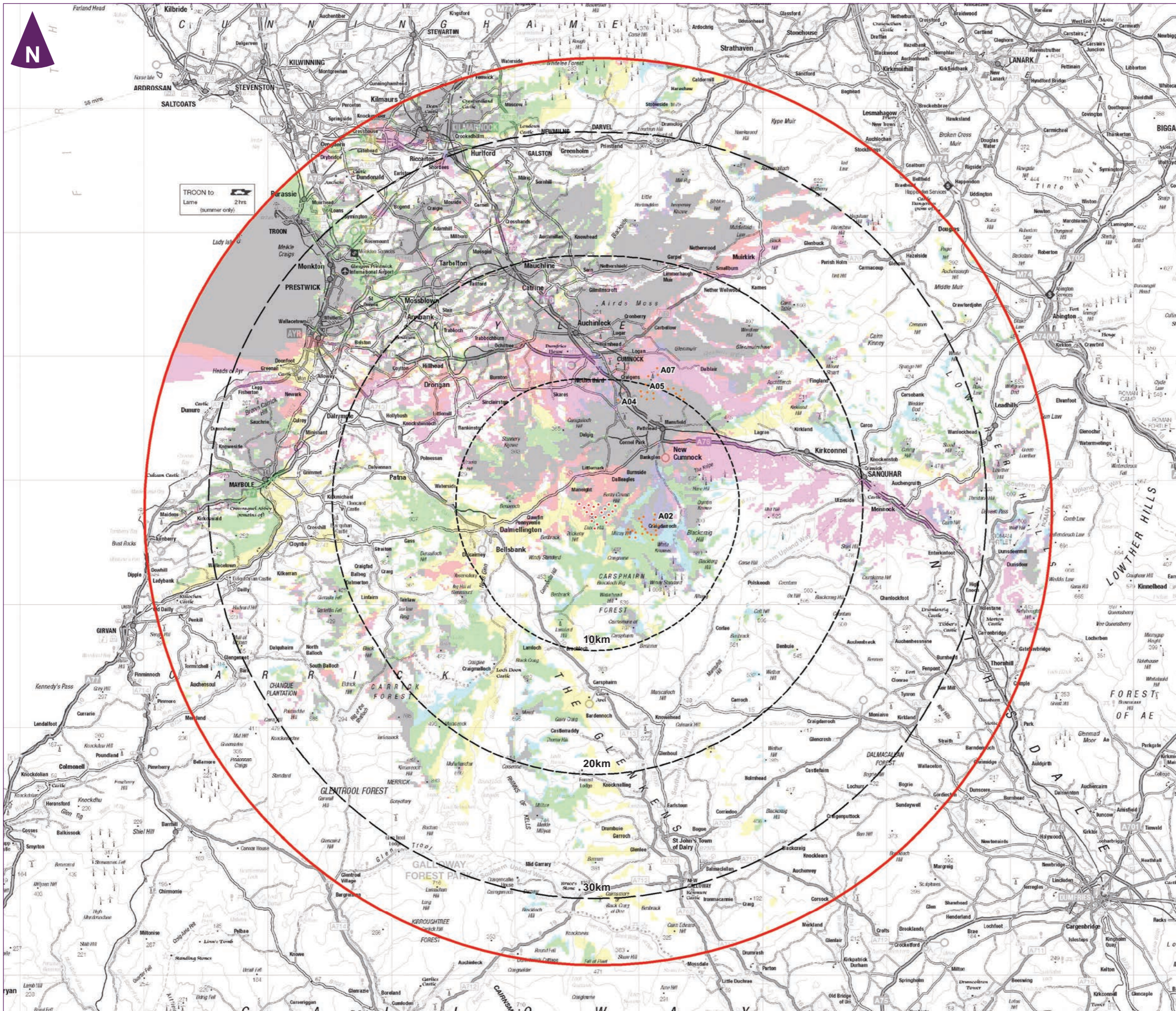


Client

**Enoch Hill Wind Farm
 Environmental Statement**

amec
foster
wheeler

**Figure 9.12b
 Cumulative ZTV 5: 10km Enoch, South
 Kyle and Benbrack**



Key

- Proposed turbine location
- Landscape and Visual Study Area
- 10km/20km/30km distance indicator from the proposed turbine locations
- Application wind farms

A02) Pencloe A05) High Cumnock
 A04) Taiglim farm A07) Garleffan

- Enoch wind farm may be theoretically visible
- Pencloe wind farm may be theoretically visible
- Taiglim farm, High Cumnock and Garleffan may be theoretically visible
- Enoch and Pencloe may be theoretically visible
- Enoch, Taiglim farm, High Cumnock and Garleffan may be theoretically visible
- Pencloe, Taiglim farm, High Cumnock and Garleffan may be theoretically visible
- Enoch, Pencloe, Taiglim farm, High Cumnock and Garleffan may be theoretically visible

Notes:
 This figure has been based on the following parameters:
 Turbine layout file: LENOCH018.WFL
 Hub height: 80m
 Rotor diameter: 100m
 Height to blade tip: 130m

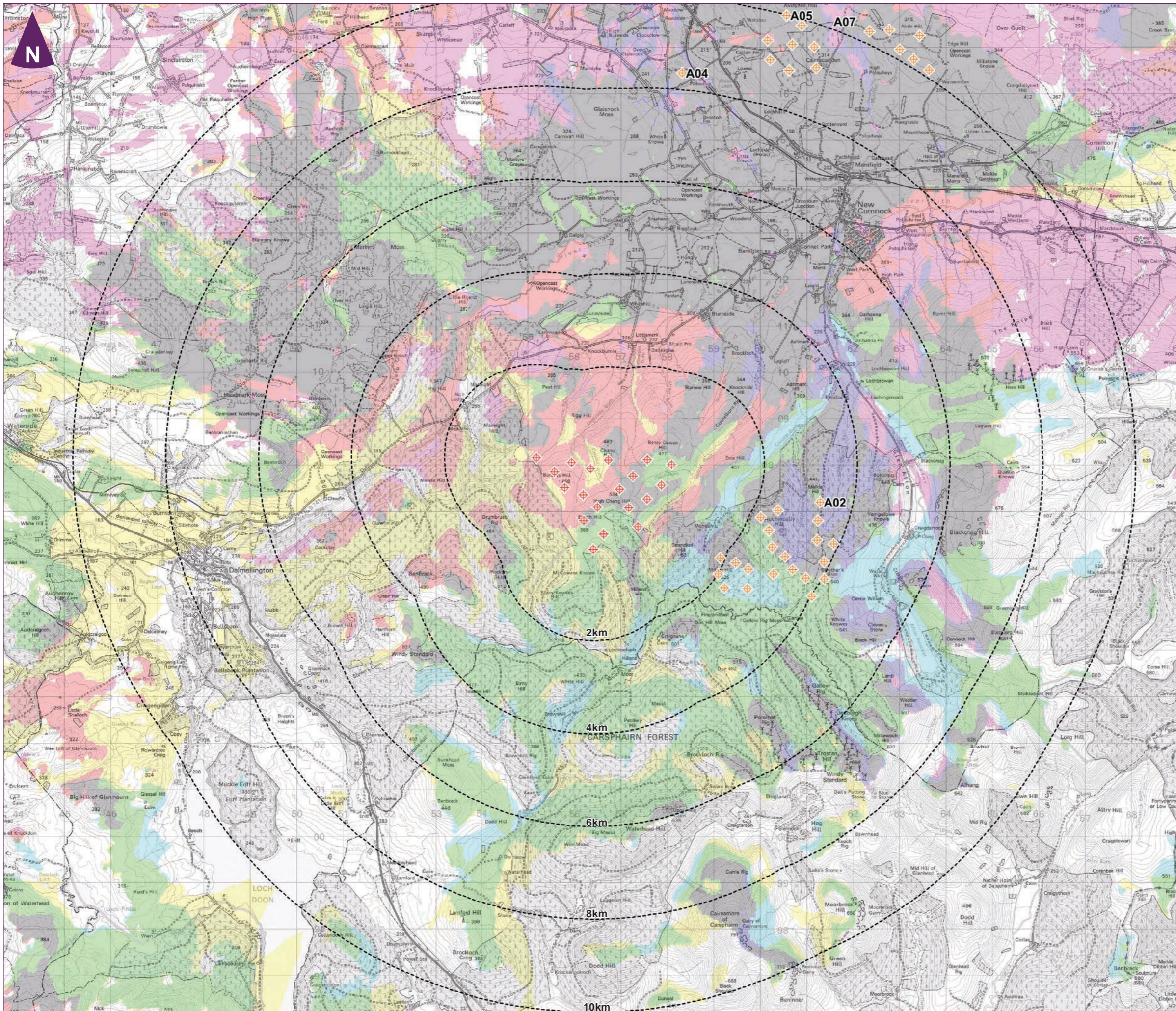
0 5km 10km 15km
 Scale 1:300,000 @ A3

Client

Enoch Hill Wind Farm
 Environmental Statement



Figure 9.13a
Cumulative ZTV 6: Enoch, Pencloe, Taiglim Farm, High Cumnock and Garleffan



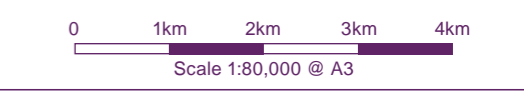
Key

- Proposed turbine location
- 2km/4km/6km/8km/10km distance indicators from the proposed turbine locations
- Application wind farms

A02) Pencloe A05) High Cumnock
 A04) Taiglim Farm A07) Garleffan

- Enoch wind farm may be theoretically visible
- Pencloe wind farm may be theoretically visible
- Taiglim farm, High Cumnock and Garleffan may be theoretically visible
- Enoch and Pencloe may be theoretically visible
- Enoch, Taiglim farm, High Cumnock and Garleffan may be theoretically visible
- Pencloe, Taiglim farm, High Cumnock and Garleffan may be theoretically visible
- Enoch, Pencloe, Taiglim farm, High Cumnock and Garleffan may be theoretically visible

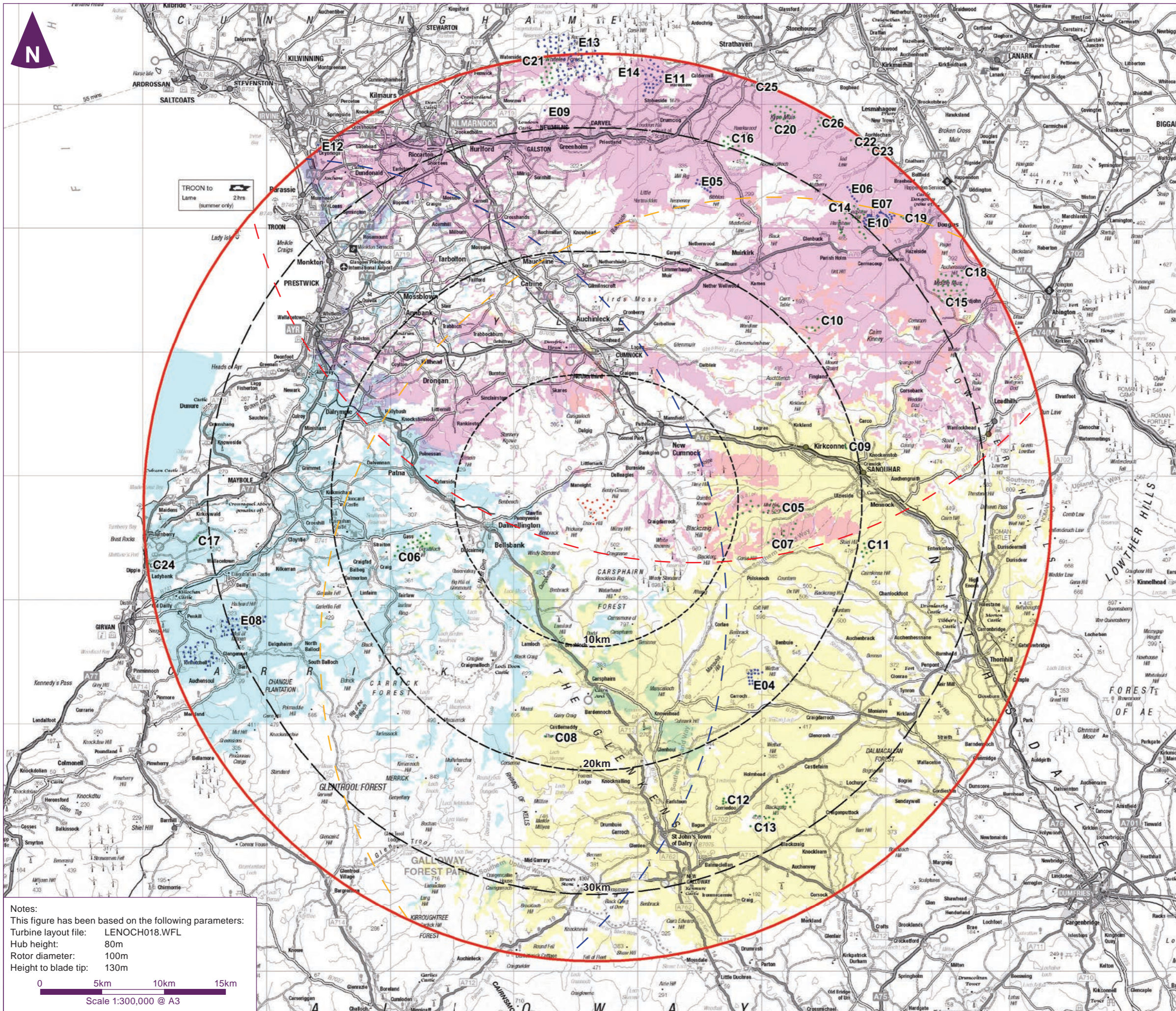
Notes:
 This figure has been based on the following parameters:
 Turbine layout file: LENOCH018.WFL
 Hub height: 80m
 Rotor diameter: 100m
 Height to blade tip: 130m



Client

Enoch Hill Wind Farm
 Environmental Statement

Figure 9.13b
Cumulative ZTV 6: 10km Enoch, Pencloe, Taiglim Farm, High Cumnock and Garleffan



Key

- Proposed turbine location
- Landscape and Visual Study Area
- 10km/20km/30km distance indicator from the proposed turbine locations
- 36.695m radius from Western Group site centre
- 36.695m radius from Eastern Group site centre
- 36.695m radius from Northern Group site centre
- Existing wind farms
- Consented wind farms

E04) Wether Hill	E11) Calder Water
E05) Bankend Rig	E12) Shelvalton Moss / Glaxo
E06) Nutberry	E13) Whitelee Extension (Phase I + II)
E07) Hagshaw Hill	E14) West Browncastle
E08) Hadyard Hill	E15) Whitelee
E09) Low Bowhill	
E10) Hagshaw Hill Extension	

C05) Sanquhar	C16) Dungavel
C06) Dersalloch	C17) Chapelton Farm
C07) Whiteside Hill	C18) Middle Muir
C08) Torrs Hill	C19) Hazelside Farm
C09) Sunnyside	C20) Kype Muir
C10) Penbreck	C21) Sneddon Law
C11) Twentysilling Hill	C22) Cleughhead Farm
C12) Knockman Hill	C23) Yonderton Farm
C13) Blackcraig Hill	C24) Dowhill
C14) Galawhistle	C25) Netherholm Farm
C15) Andershaw	C26) Auchenrobert

- Eastern Group may be theoretically visible
- Western Group may be theoretically visible
- Northern Group may be theoretically visible
- Eastern and Western Group may be theoretically visible
- Eastern and Northern Group may be theoretically visible
- Western and Northern Group may be theoretically visible
- Eastern, Western and Northern Group may be theoretically visible

Notes:
 This figure has been based on the following parameters:
 Turbine layout file: LENOCH018.WFL
 Hub height: 80m
 Rotor diameter: 100m
 Height to blade tip: 130m

0 5km 10km 15km
 Scale 1:300,000 @ A3

Client

Enoch Hill Wind Farm
 Environmental Statement

Figure 9.14
Cumulative ZTV 7: Existing and Consented Wind Farms between 10km and 35km

June 2015 32965-GLA337.indd irvic02



- Key**
- Proposed turbine location
 - Landscape and Visual Study Area
 - 10km/20km/30km distance indicator from the proposed turbine locations
 - 36.695m radius from Western Group site centre
 - 36.695m radius from Eastern Group site centre
 - 36.695m radius from Southern Group site centre
 - Application wind farms

- | | |
|--------------------|----------------------------|
| A08) Quantans Hill | A19) Margree |
| A09) Glenmount | A20) Linburn Farm |
| A10) Knockshinnoch | A21) Kennoxhead |
| A11) High Glenmuir | A22) Loch Urr |
| A12) Lethans | A23) Leadhills (Windy Dod) |
| A13) Keirs Hill | A24) Glentaggart |
| A14) Longburn | A25) Feoch |
| A15) Ulzieside | A26) Burnfoot Farm |
| A16) Spango | A27) Mochrum Fell |
| A17) Penbreck | |
| A18) Fowler Farm | |

- Western Group may be theoretically visible
- Eastern Group may be theoretically visible
- Southern Group may be theoretically visible
- Western and Eastern Group may be theoretically visible
- Western and Southern Group may be theoretically visible
- Eastern and Southern Group may be theoretically visible
- Western, Eastern and Southern Group may be theoretically visible

Notes:
 This figure has been based on the following parameters:
 Turbine layout file: LENOCH018.WFL
 Hub height: 80m
 Rotor diameter: 100m
 Height to blade tip: 130m

0 5km 10km 15km
 Scale 1:300,000 @ A3

Client



Figure 9.15
Cumulative ZTV 8: Application Wind Farms between 10km-35km