

**Key**

- Site Boundary
- Study Area
- HER Assets within 500m
- DBA Assets
- ▲ Turbine Location
- Proposed on site tracks
- Crane Pad
- ⊕ Permanent meteorological mast
- Temporary Construction Compound
- SPEN and EON Substation compound
- Borrow pit search area

Note:  
The Historic Scotland GIS Data contained in this material was obtained on 27/03/2015. The most publicly available up to date Historic Scotland GIS Data can be obtained from <http://www.historic-scotland.gov.uk/>.

0 150 300 600 900 1,200  
Meters

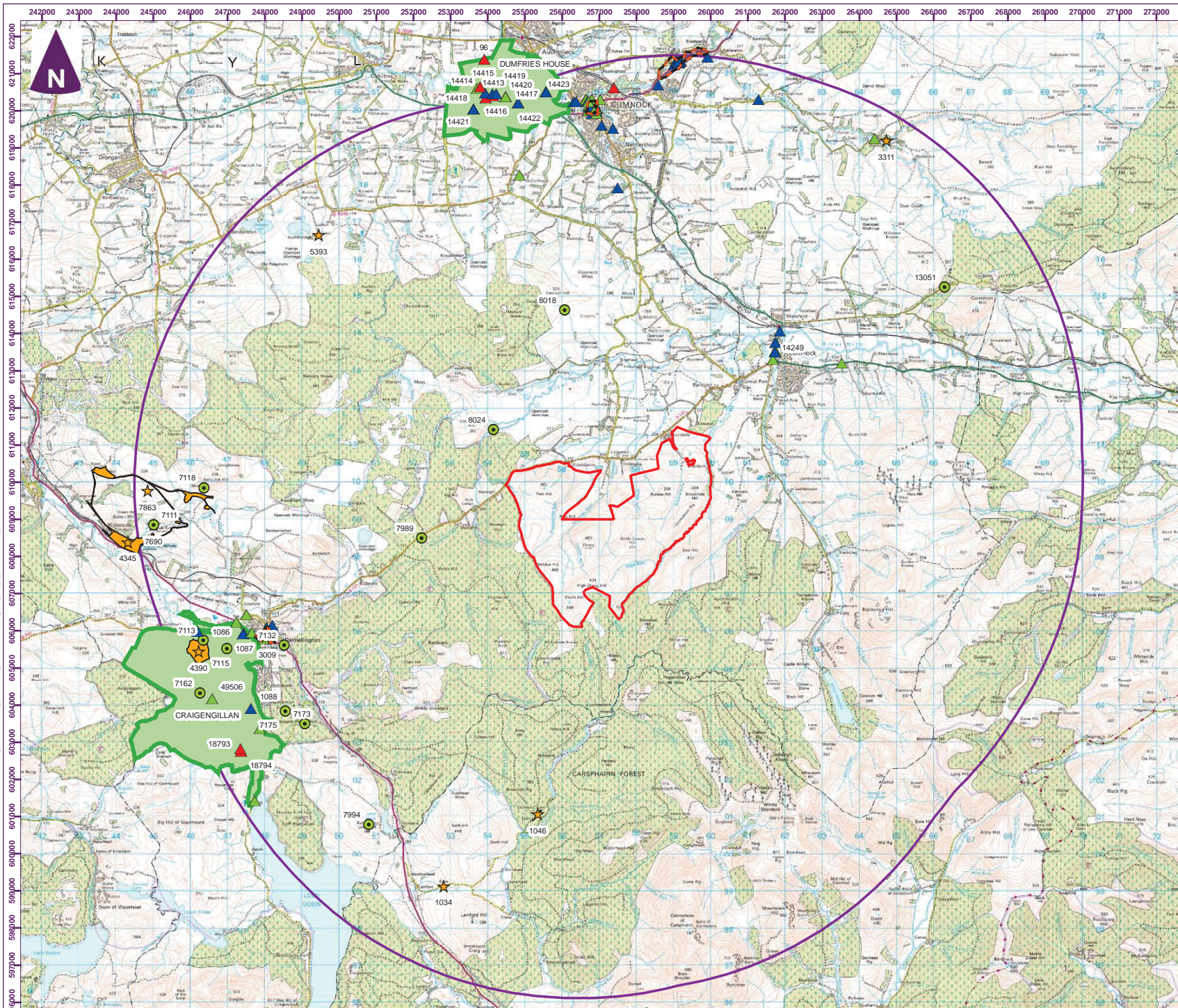
Scale at A3: 1:25,000

Client

Enoch Hill Wind Farm  
Environmental Statement

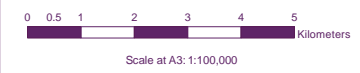
**Figure 10.1**  
Non-Designated Heritage Assets

File: F:\G:\MAD\DATA\PROJECT\32965\Enoch Hill Wind Farm\EA\_SUB\0400\Design\Archaeology\2015\Figures\10.2965\_Figure\_10.1-2\_Development\_Site.mxd



- Key
- Site Boundary
  - Extended Study Area
  - GDL
  - ★ Scheduled Monument
  - ▲ Category A Listed Building
  - ▲ Category B Listed Building
  - ▲ Category C Listed Building
  - Conservation Areas
  - Probable and possible nationally important assets

Note:  
The Historic Scotland GIS Data contained in this material was obtained on 27/03/2015. The most publicly available up to date Historic Scotland GIS Data can be obtained from <http://www.historic-scotland.gov.uk/>.



Client

Enoch Hill Wind Farm  
Environmental Statement



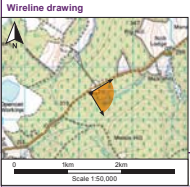
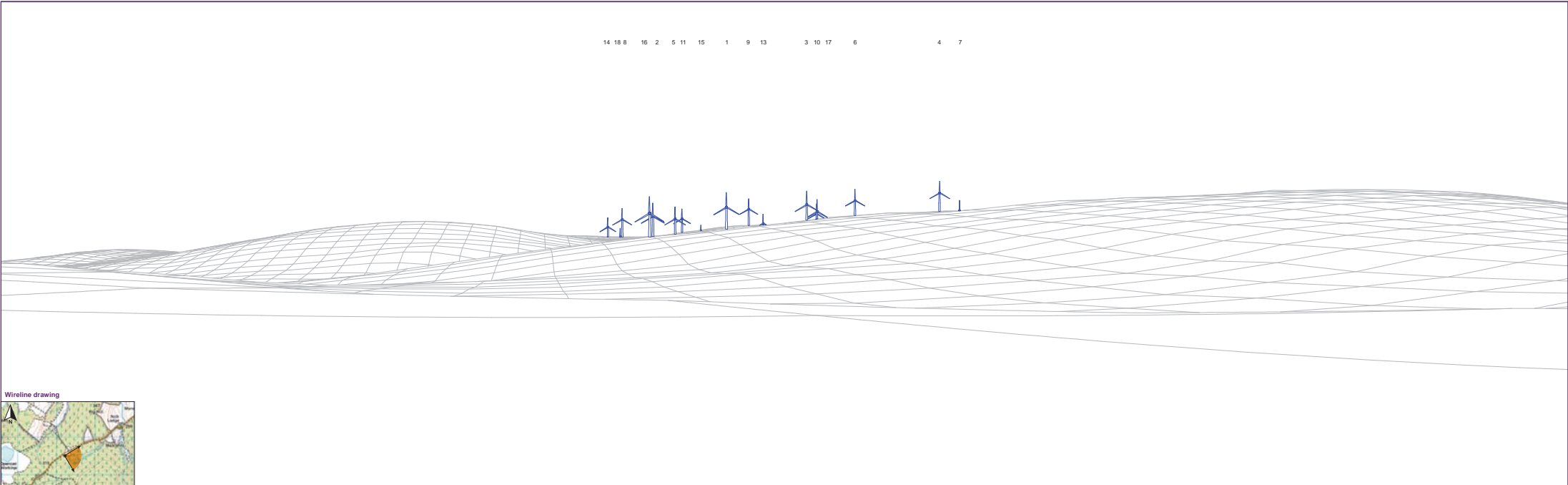
**Figure 10.2**  
Designated and Potentially Nationally Important Assets

file: F:\GIM\DATA\PROJECT\32965\Enoch Hill Wind Farm\EA SUB\DU\040 Design\Archaeology\2015\Figures\10.2\_08a revised\_A3\_2015.mxd





14 18 8 16 2 5 11 15 1 9 13 3 10 17 6 4 7



View flat at a comfortable arm's length

Contains Ordnance Survey data © Crown copyright and database right 2014

Wind Farm Key Enoch



**Notes:**  
 \* This figure has been based on the following parameters:  
 Turbine model file: ESD020010.rvt;  
 Hub height: 85m • Rotor diameter: 100m • Height to blade tip: 130m  
 \* turbine positions could be subject to minor shifting (typical) up to 50m

• Direction given as bearing relative to Grid North (BNG)

OS reference: 620 235 660 645  
 Eye level: 322.5m AOD  
 Direction of view: 104°  
 Nearest turbine: 2.95km

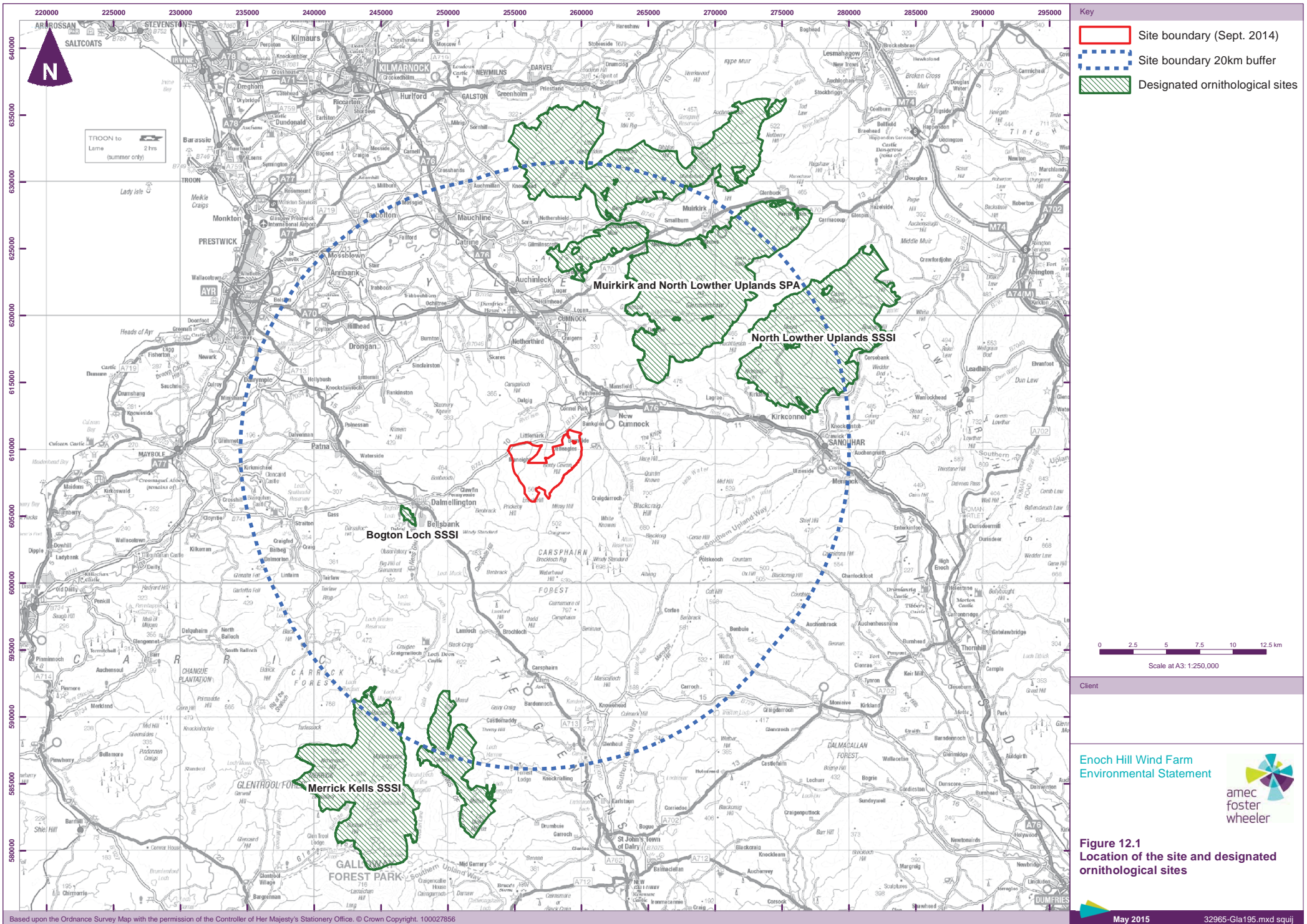
Horizontal field of view: 90° (cylindrical projection)  
 Principal distance: 822mm  
 Number of frons visible: 16  
 Number of blade tips visible: 17

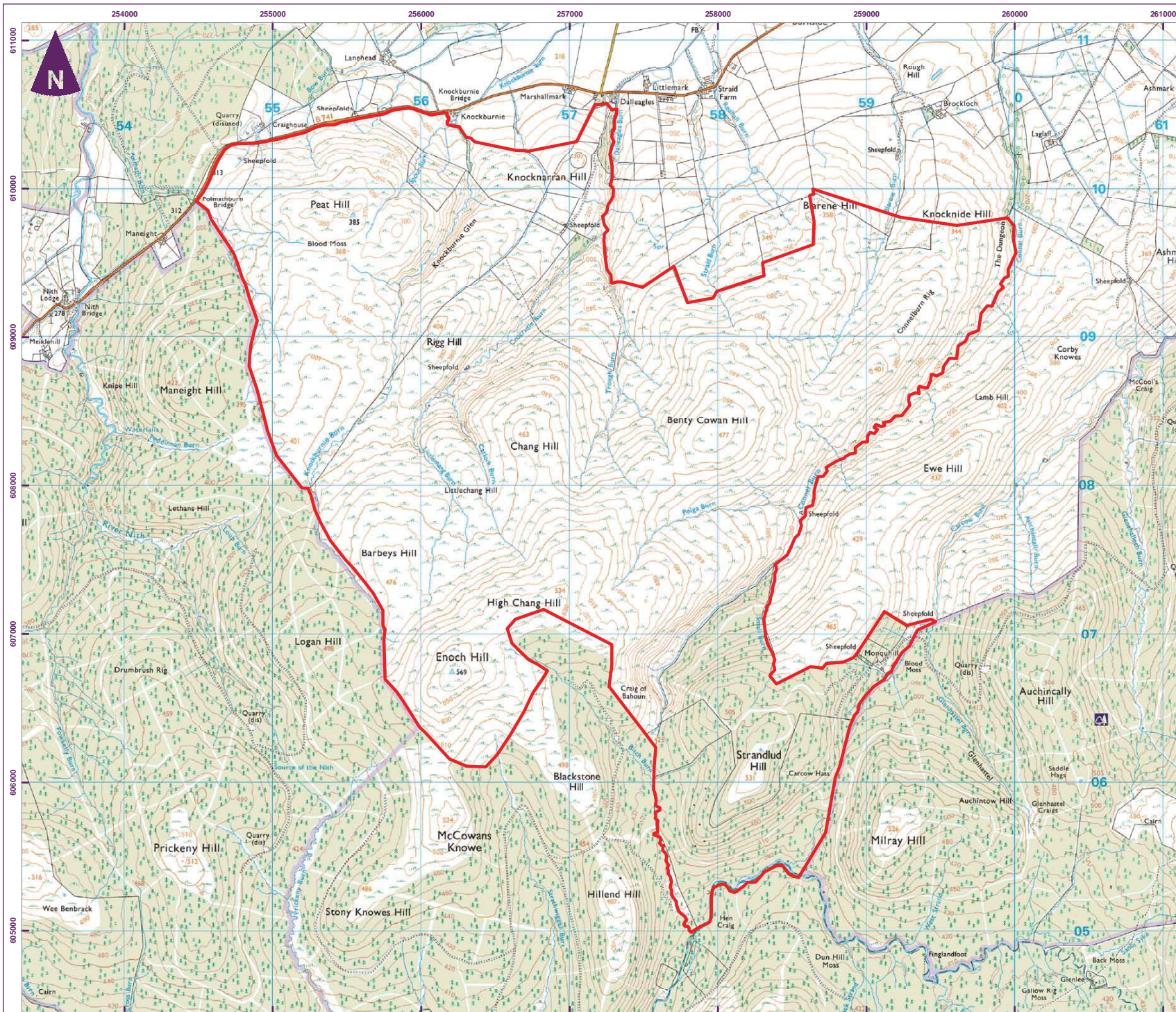
Enoch Hill Wind Farm  
 Environmental Statement



Figure 10.4  
 Viewpoint: Beoch Cairn  
 June 2015

22905-GLA331.indd.burt





Key

 2011-12 winter transect survey area

0 0.25 0.5 0.75 1 1.25 km

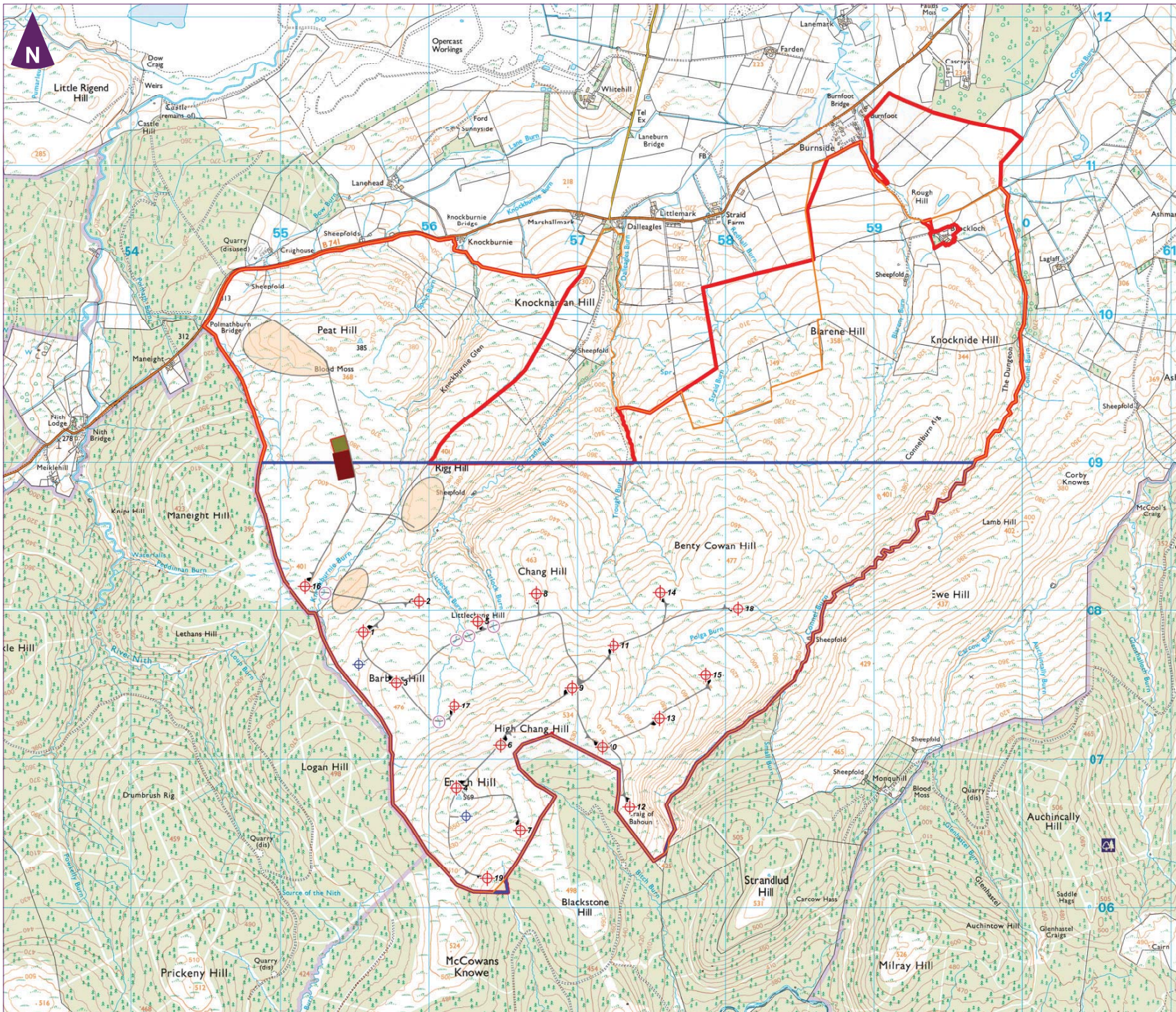
Scale at A3: 1:25,000

Client

Enoch Hill Wind Farm  
Environmental  
Statement



Figure 12.2a  
2011-12 winter transect survey area



- Key
- 2013 Site boundary (accessible land boundary in 2013)
  - Core survey area (2012 and 2013)
  - 2012 survey area: 2012 site boundary
  - Turbine Location - LENOCH008
  - Proposed on site tracks
  - Crane pad
  - SPEN and EON Substation compound
  - Temporary construction compound
  - Watercourse crossing
  - Borrow pit search area
  - Permanent meteorological mast



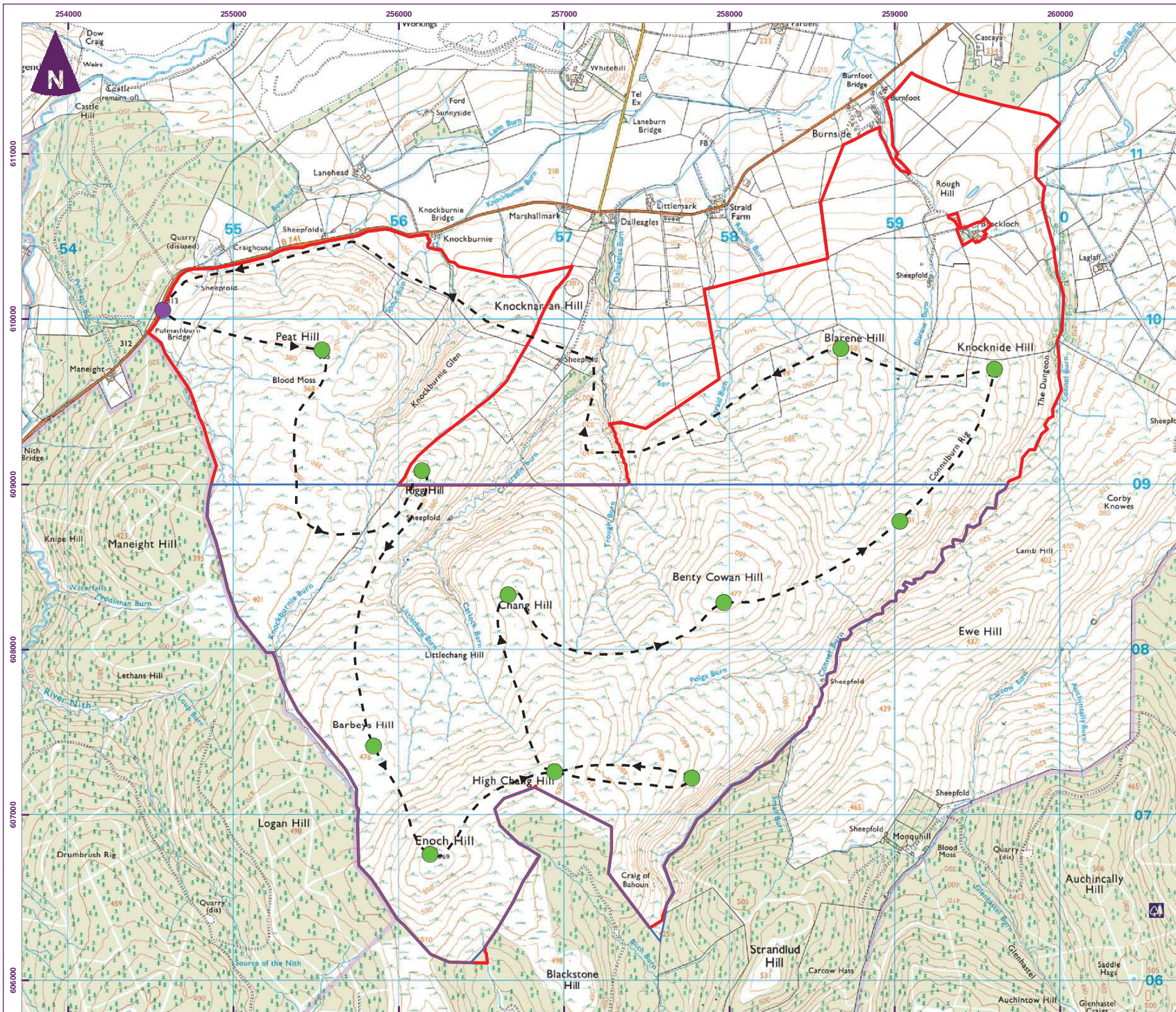
Client

Enoch Hill Wind Farm  
Environmental Statement



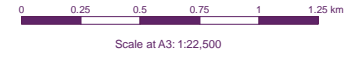
Figure 10-10  
and 10-11  
Reeding Lea  
Area





Key

- Site boundary (Sept. 2014)
- Core survey area
- Start/finish
- Observation point scan
- Winter walkover route



Client

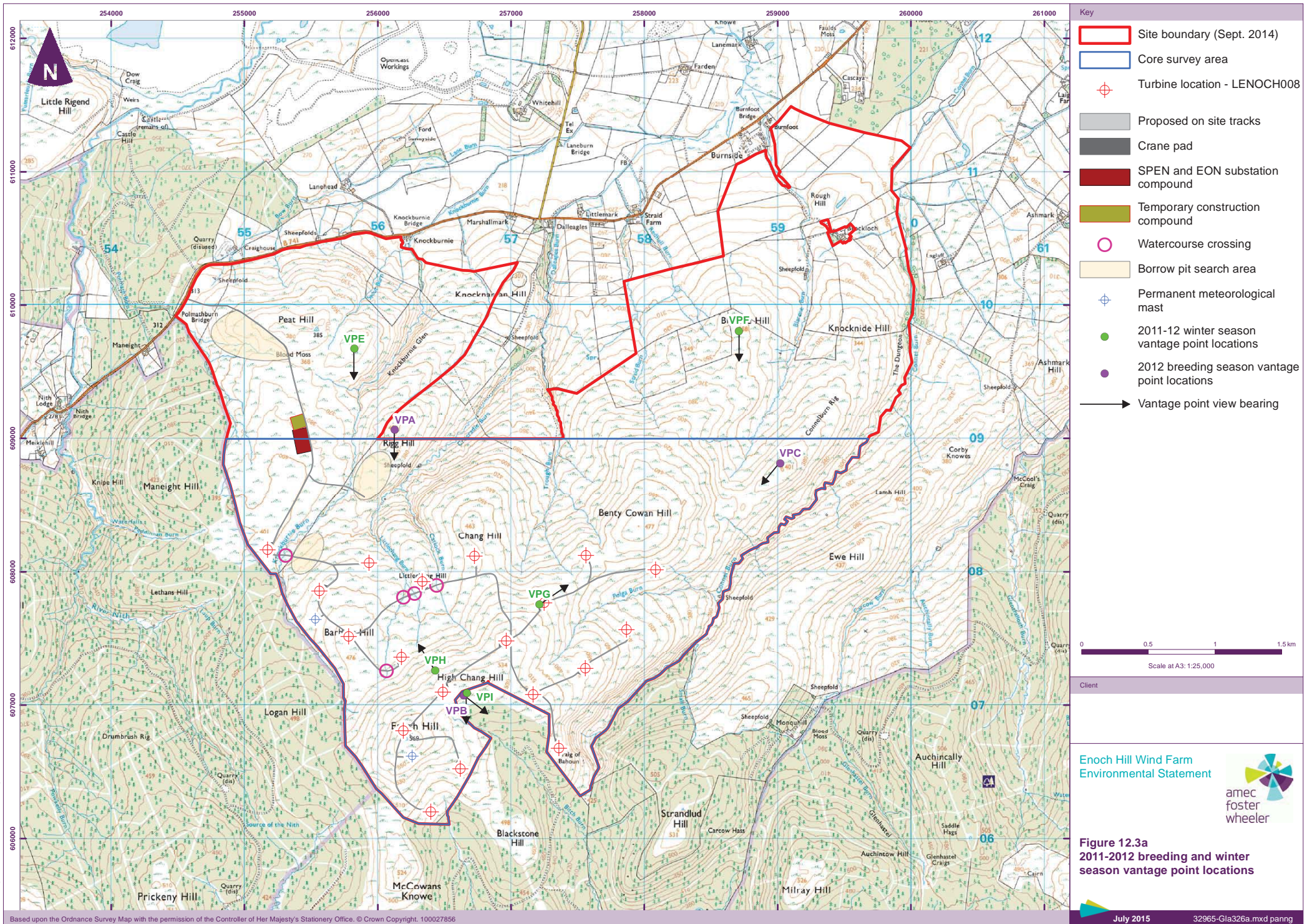
Enoch Hill Wind Farm  
Environmental Statement



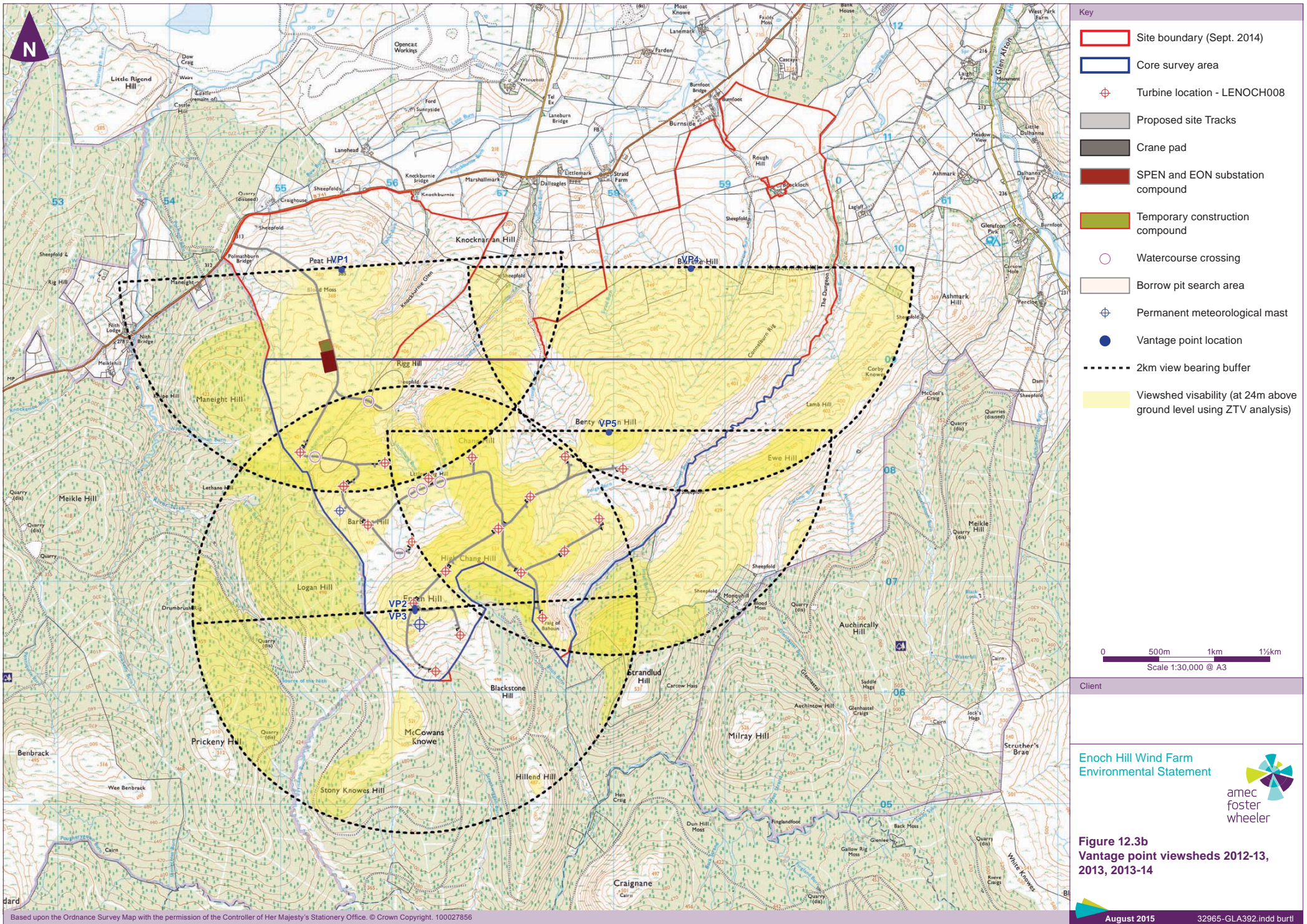
**Figure 12.2c**  
2013-2014 winter transect  
survey area

file: C:\Users\jgwards\pennu\GLOBAL\Desktop\Enoch Hill\GIS\MapDocs\201306\Gla198a.mxd

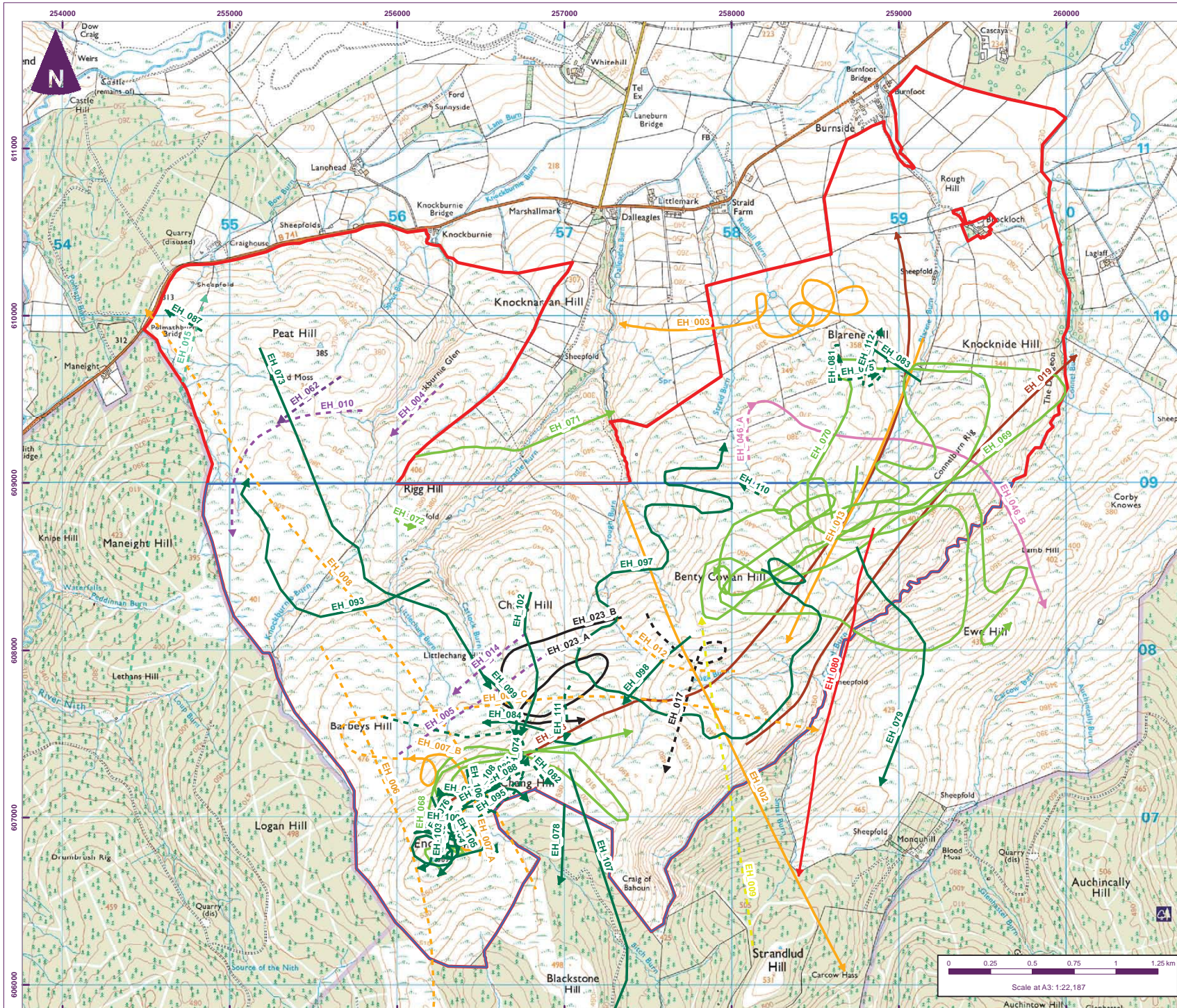
Based upon the Ordnance Survey Map with the permission of the Controller of Her Majesty's Stationery Office. © Crown Copyright. 100027856



file: C:\Users\jgervais\pennu\_GLOBALLDesktop\Enoch\_AncGIS\MXD\020905\_Gla326a.mxd







**Key**

- Site boundary (Sept. 2014)
- Core survey area

**Winter Season 2011-2012**

- - - Golden plover flight above or below collision risk height
- Golden plover flight at collision risk height
- - - Greylag goose above or below collision risk height
- Greylag goose at collision risk height

**Breeding Season 2012**

- - - Golden plover flight above or below collision risk height
- Golden plover flight at collision risk height

**Winter Season 2012-2013**

- - - Golden plover above or below collision risk height
- Golden plover at collision risk height
- - - Black grouse flight above or below collision risk height
- Black grouse flight at collision risk height
- - - Whooper swan flight above or below collision risk height
- Whooper swan flight at collision risk height

**Breeding Season 2013**

- - - Barnacle goose above or below collision risk height
- Barnacle goose at collision risk height
- - - Golden plover above or below collision risk height
- Golden plover at collision risk height
- - - Greylag goose above or below collision risk height
- Greylag goose at collision risk height

**Winter Season 2013-2014**

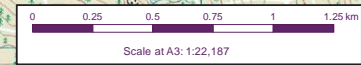
- - - Golden plover above or below collision risk height
- Golden plover flight at collision risk height
- - - Pink-footed goose above or below collision risk height
- Pink-footed goose at collision risk height
- - - Black grouse above or below collision risk height
- Black grouse at collision risk height

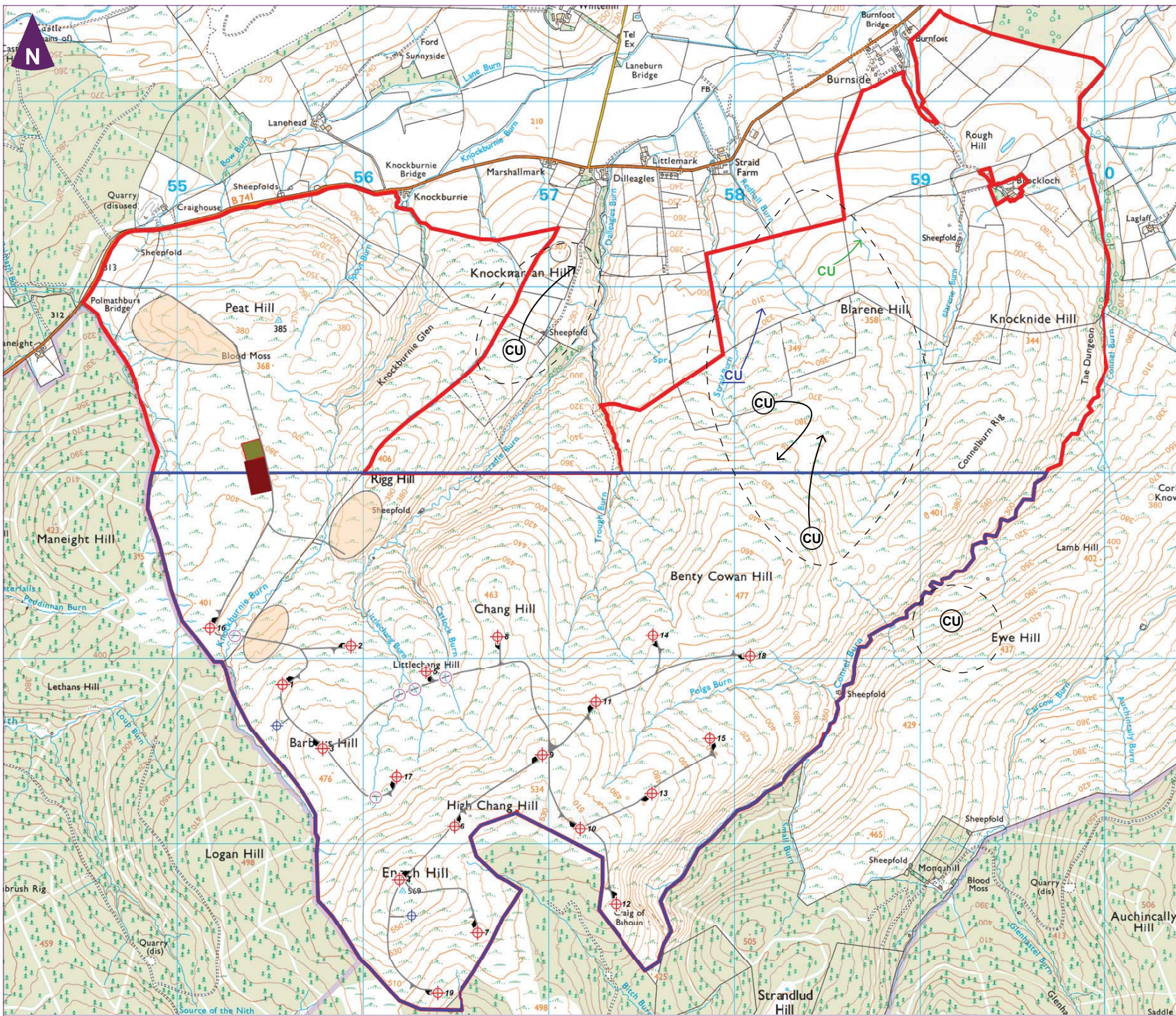
Client

Enoch Hill Wind Farm  
Environmental Statement



**Figure 12.5**  
Flight activity map  
wildfowl and waders






**Key**

- Site boundary (Sept. 2014)
- Core survey area
- + Turbine location - LENOCH008
- Proposed on site tracks
- Crane pad
- SPEN and EON substation compound
- Temporary construction compound
- Watercourse crossing
- Borrow pit search area
- + Permanent meteorological mast
- Single territory
- Visit 1
- Visit 2
- Visit 3
- Note: No target species seen on visit 4
- CU Curlew
- Calling
- Displaying/Singing
- ← Flight path

0 200 400 600 800 1km  
Scale 1:20,000 @ A3

Client

**Enoch Hill Wind Farm  
Environmental Statement**



**Figure 12.6  
Breeding wader territories 2013**