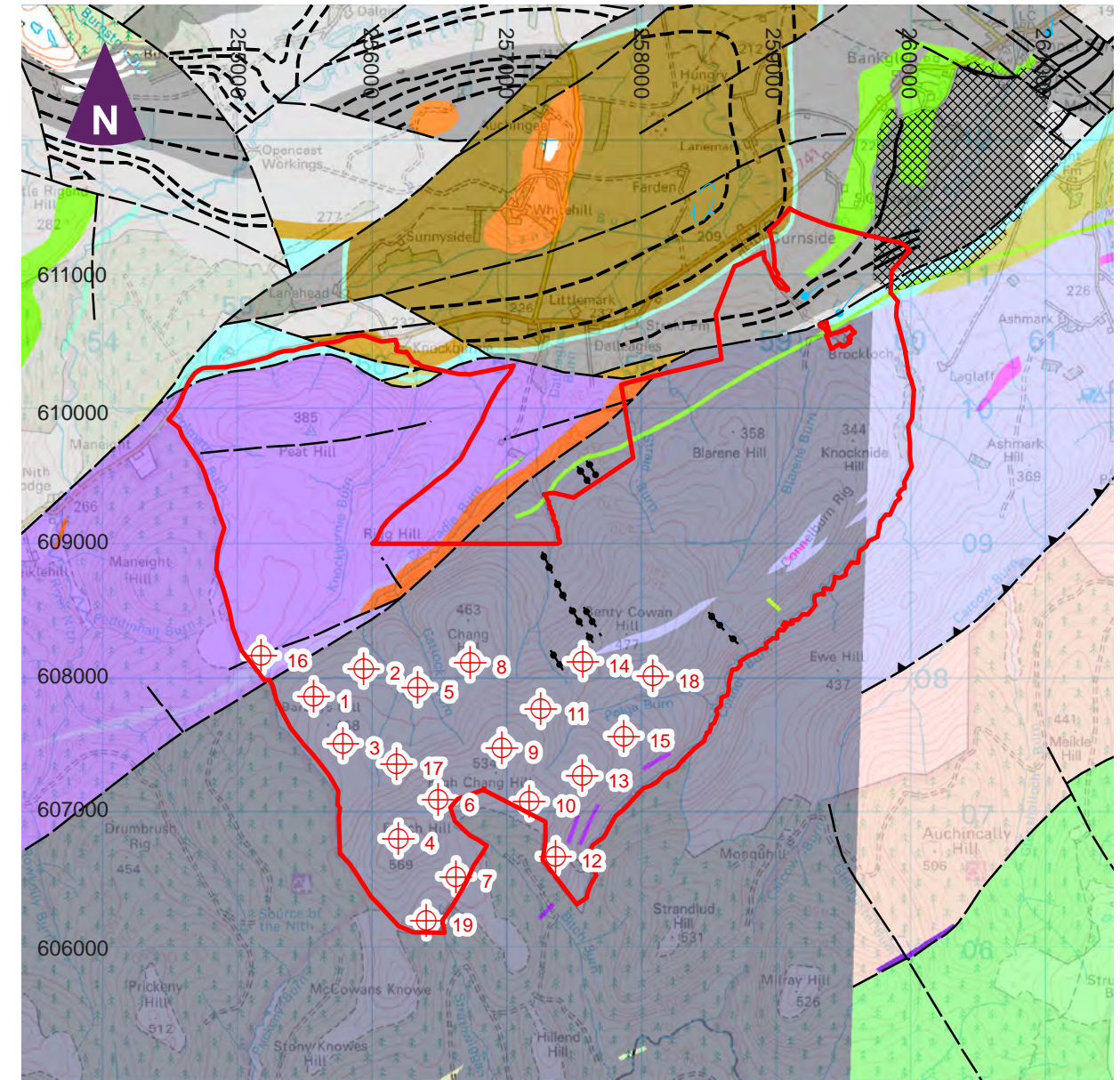


Drift Geology



Solid Geology

0 km 3 km
Scale 1:50,000 @ A3

Key

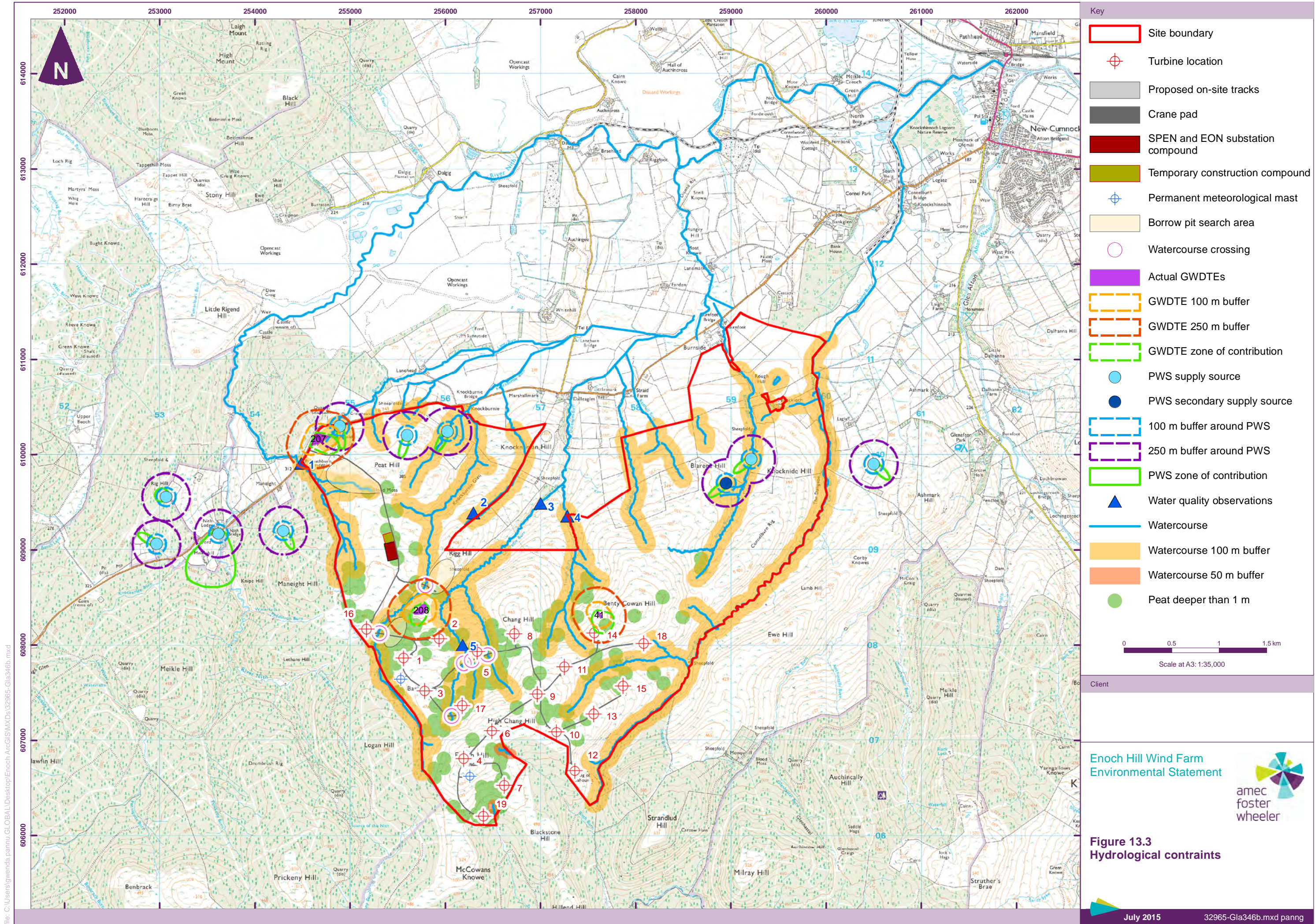
| | | | | | | | | | |
|----------------------|--------------------------------------|--|---|--|---|--|---|--|--|
| | Site boundary | | SCOTTISH UPPER COAL MEASURES FORMATION - SEDIMENTARY ROCK CYCLES, COAL MEASURE TYPE | | LIMESTONE COAL FORMATION AND UPPER LIMESTONE FORMATION (UNDIFFERENTIATED) - LIMESTONE | | LANARK GROUP - CONGLOMERATE, SANDSTONE | | CRAWFORD GROUP - BASALT, LAVA-PILLOWED |
| | Turbine location | | SCOTTISH MIDDLE COAL MEASURES FORMATION - SEDIMENTARY ROCK CYCLES, COAL MEASURE TYPE | | LIMESTONE COAL FORMATION - SEDIMENTARY ROCK CYCLES, CLACKMANNAN GROUP TYPE | | SOUTHERN MIDLAND VALLEY FELSITE SILLS - FELSITE | | CRAWFORD GROUP - MUDSTONE AND CHERT |
| Drift Geology | | | | | | | | | |
| | Alluvium | | SCOTTISH LOWER COAL MEASURES FORMATION - SEDIMENTARY ROCK CYCLES, COAL MEASURE TYPE | | UPPER LIMESTONE FORMATION - SEDIMENTARY ROCK CYCLES, CLACKMANNAN GROUP TYPE | | NORTH BRITAIN SILURO-DEVONIAN CALC-ALKALINE DYKE SUITE - ANDESITE | | UNNAMED IGNEOUS INTRUSION OF UNKNOWN AGE - MAFITE |
| | Till | | WESTERN MIDLAND VALLEY WESTPHALIAN TO EARLY PERMIAN SILLS - QUARTZ-MICROGABBRO | | UPPER LIMESTONE FORMATION - LIMESTONE | | BLACKCRAIG FORMATION - CONGLOMERATE, WACKE | | Coal seam, inferred |
| | Gravel, Sand and Silt | | PASSAGE FORMATION - SANDSTONE | | AYRSHIRE BASANITIC AND FOIDITIC PLUGS AND VENTS - PYROCLASTIC-ROCK | | MARCHBURN FORMATION - CONGLOMERATE | | Coal seam, observed |
| | Peat | | LIMESTONE COAL FORMATION AND UPPER LIMESTONE FORMATION (UNDIFFERENTIATED) - SEDIMENTARY ROCK CYCLES, CLACKMANNAN GROUP TYPE | | BALLAGAN FORMATION, CLYDE SANDSTONE FORMATION, STRATHCLYDE GROUP AND LOWER LIMESTONE FORMATION (UNDIFFERENTIATED) | | MARCHBURN FORMATION - WACKE | | Drumlin, form line at base |
| | Infilled ground - artificial deposit | | CARRICK VOLCANIC FORMATION - BASALT AND BASALTIC ANDESITE | | CUMBRAE-STEVENSTON DYKE - ANDESITE | | LEADHILLS SUPERGROUP - CONGLOMERATE, WACKE AND MUDSTONE | | Fault, inferred, displacement unknown |
| | MULL DYKE-SWARM - QUARTZ-MICROGABBRO | | | | | | | | Reverse or thrust fault, inferred, barbs on hanging wall side, throw in metres |
| | CUMBRAE-STEVENSTON DYKE - ANDESITE | | | | | | | | Glacial meltwater channel centre line, undifferentiated |
| | AEGRANUM MARINE BAND - LIMESTONE | | | | | | | | Mineral vein, inferred |

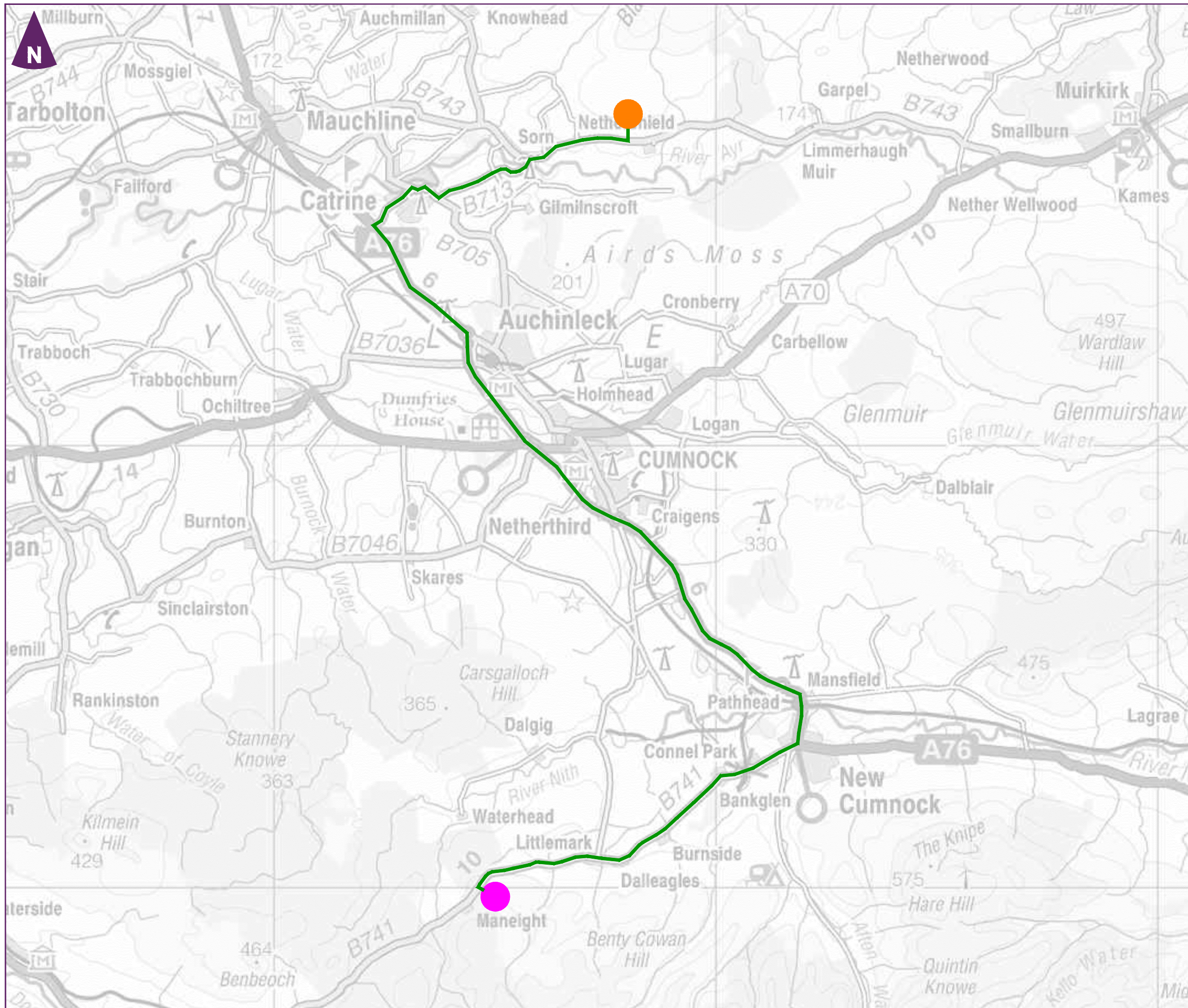
Client

Enoch Hill Wind Farm
Environmental Statement



Figure 13.2
Geology





Key

- Breedon Aggregates Scotland Ltd.
- Site Access
- Proposed HGV Route

NOT TO SCALE

Client

Enoch Hill Wind Farm




Figure 14.1
Quarry Routing Option

June 2015

32965 - GLA349.dwg ford

