

Client

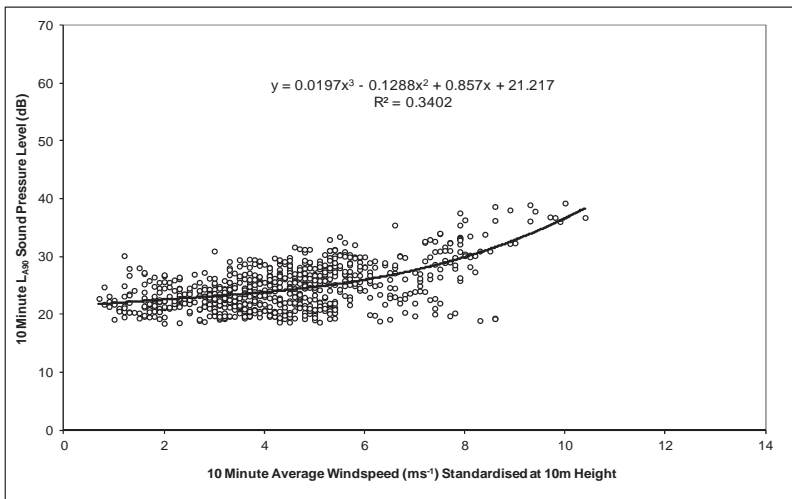
Enoch Hill Wind Farm  
Environmental Statement



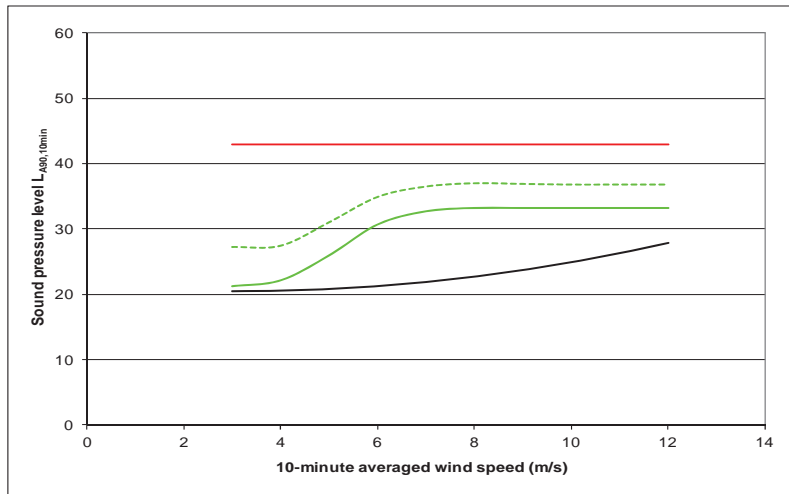
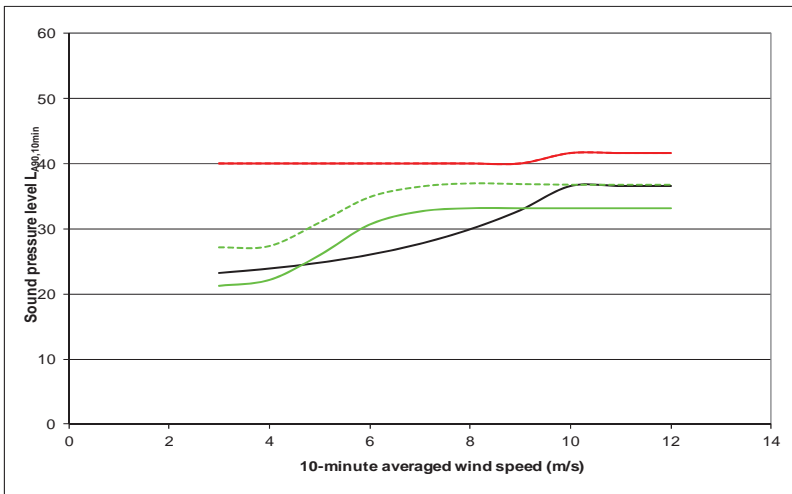
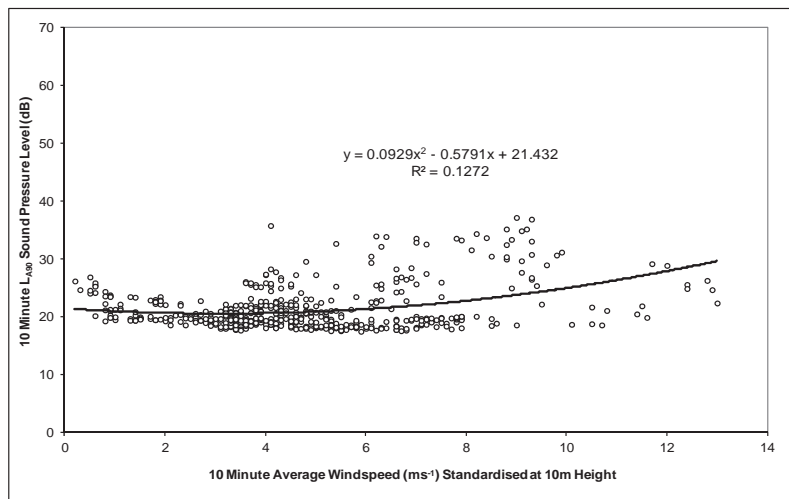
amec  
foster  
wheeler

**Figure 7.2**  
Wind conditions encountered during  
the noise monitoring survey

Quiet Daytime



Night time



Key

- ETSU Derived Noise Limit,  $L_{A90, 10min}$
- Background Noise Level,  $L_{A90, 10min}$
- Predicted Wind Turbine Noise Level,  $L_{A90, 10min}$
- - - Predicted Cumulative Wind Turbine Noise Level,  $L_{A90, 10min}$

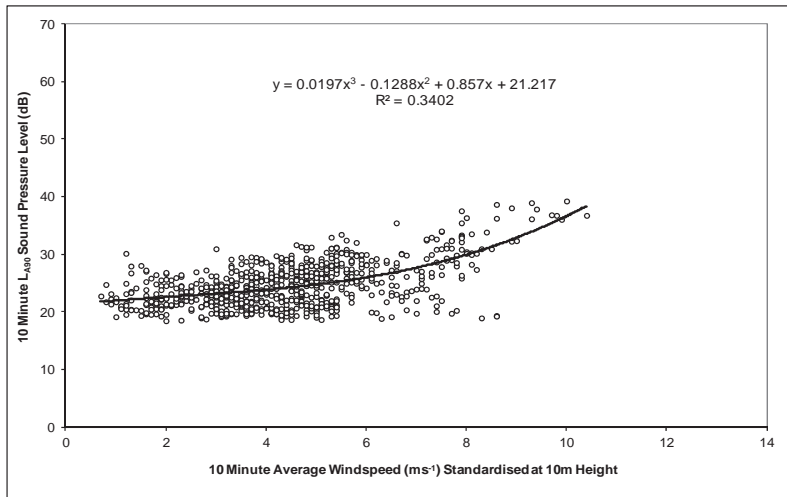
Client

Enoch Hill Wind Farm  
Environmental Statement

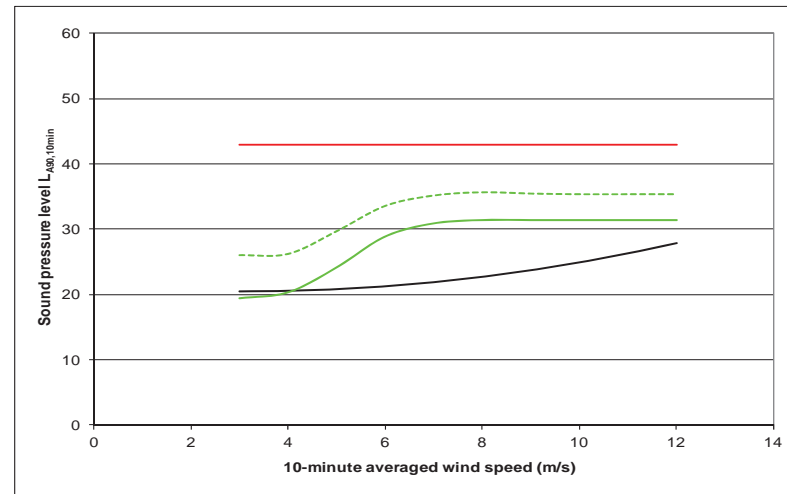
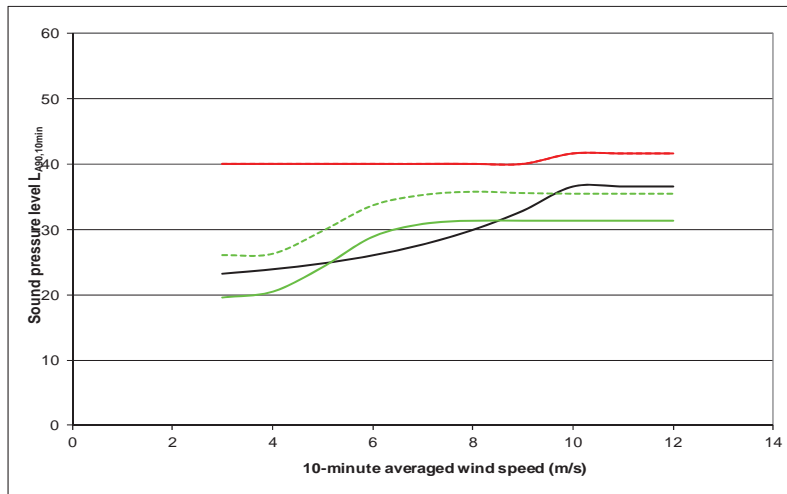
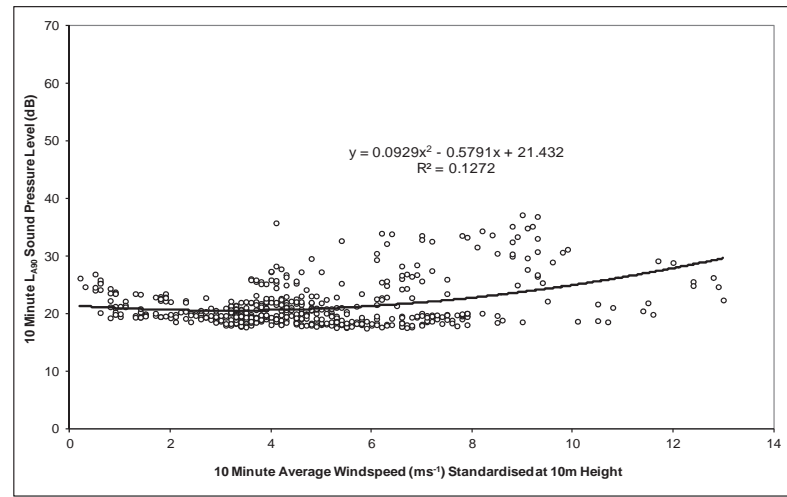


Figure 7.3  
R1 - Meikle Hill  
noise assessment

Quiet Daytime



Night time



Key

- ETSU Derived Noise Limit,  $L_{A90, 10min}$
- Background Noise Level,  $L_{A90, 10min}$
- Predicted Wind Turbine Noise Level,  $L_{A90, 10min}$
- Predicted Cumulative Wind Turbine Noise Level,  $L_{A90, 10min}$

Client

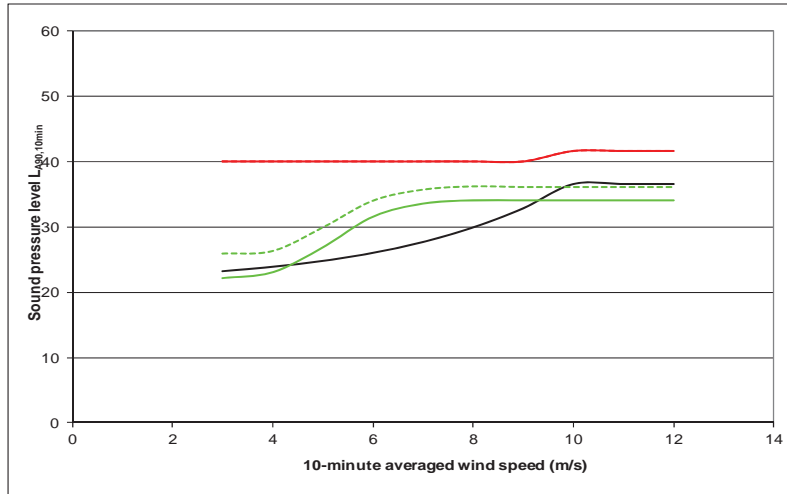
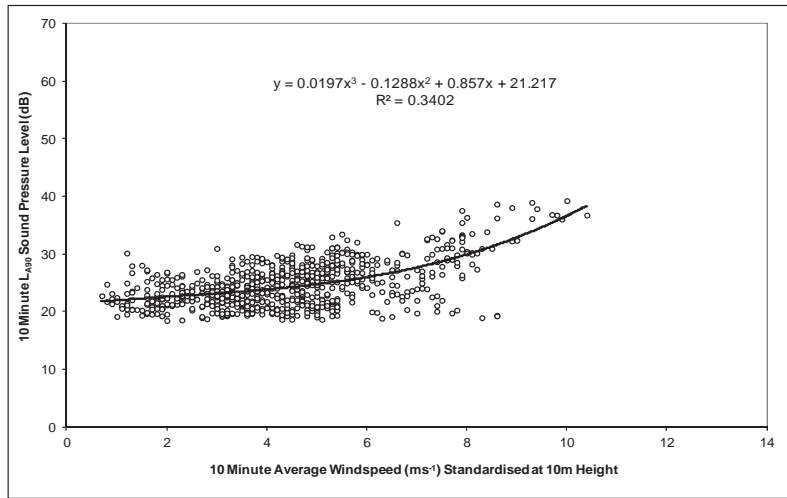
Enoch Hill Wind Farm  
Environmental Statement



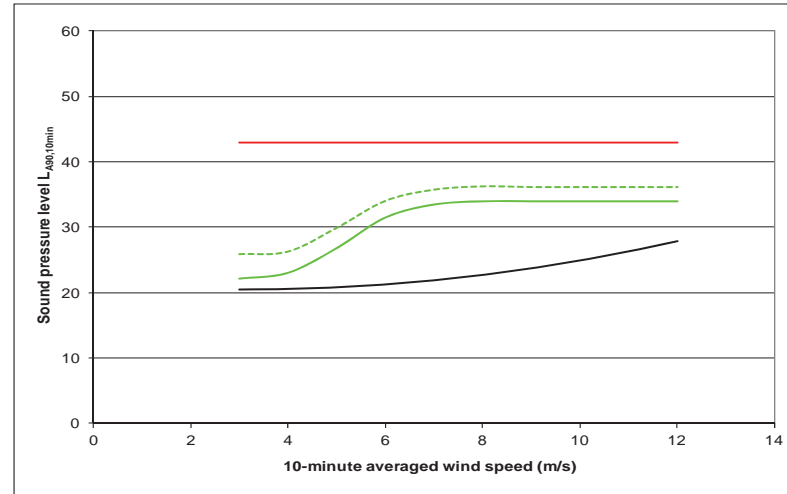
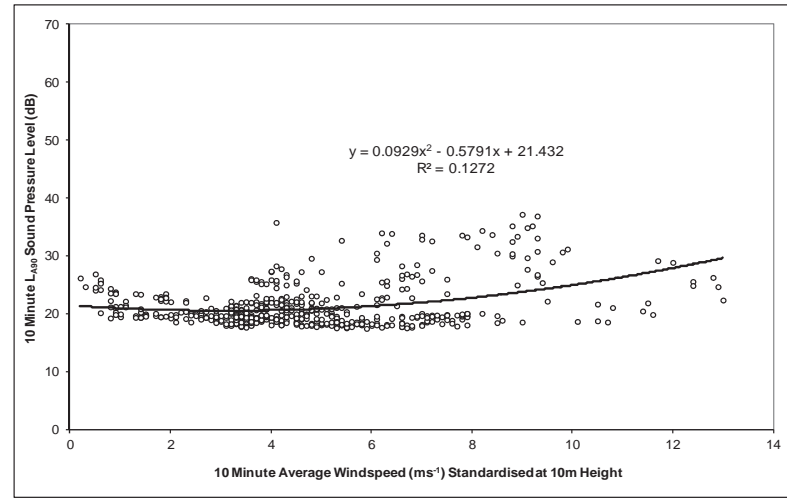
Figure 7.4  
R2 - Nith Lodge  
noise assessment



Quiet Daytime



Night time



Key

- ETSU Derived Noise Limit,  $L_{A90, 10min}$
- Background Noise Level,  $L_{A90, 10min}$
- Predicted Wind Turbine Noise Level,  $L_{A90, 10min}$
- Predicted Cumulative Wind Turbine Noise Level,  $L_{A90, 10min}$

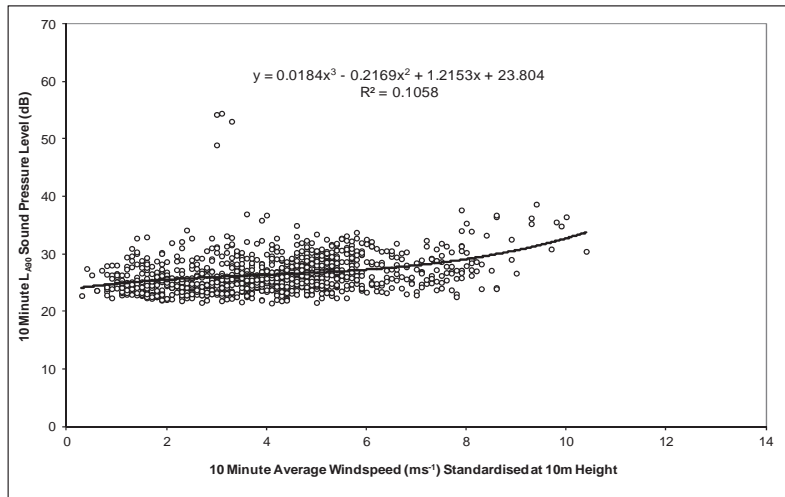
Client

Enoch Hill Wind Farm  
Environmental Statement

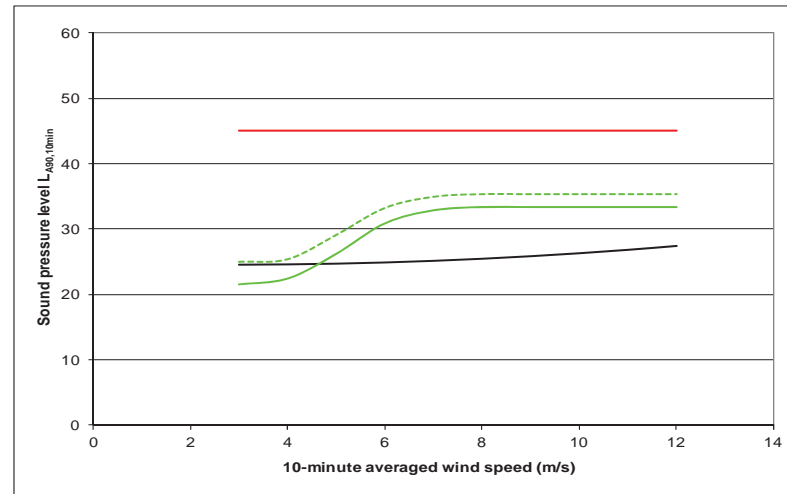
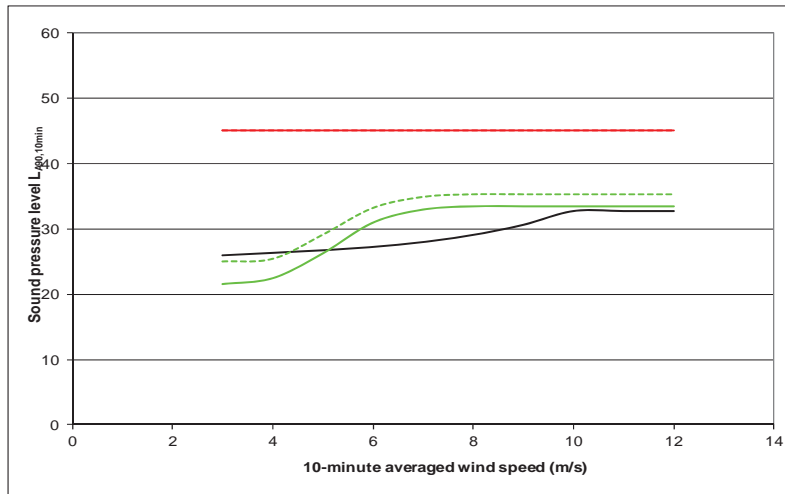
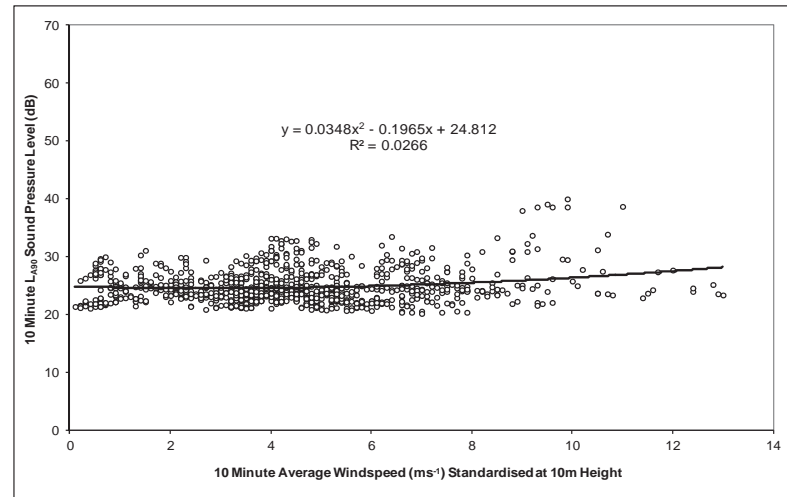


Figure 7.5  
R3 - Maneight  
noise assessment

Quiet Daytime



Night time



Key

- ETSU Derived Noise Limit,  $L_{A90,10min}$
- Background Noise Level,  $L_{A90,10min}$
- Predicted Wind Turbine Noise Level,  $L_{A90,10min}$
- Predicted Cumulative Wind Turbine Noise Level,  $L_{A90,10min}$

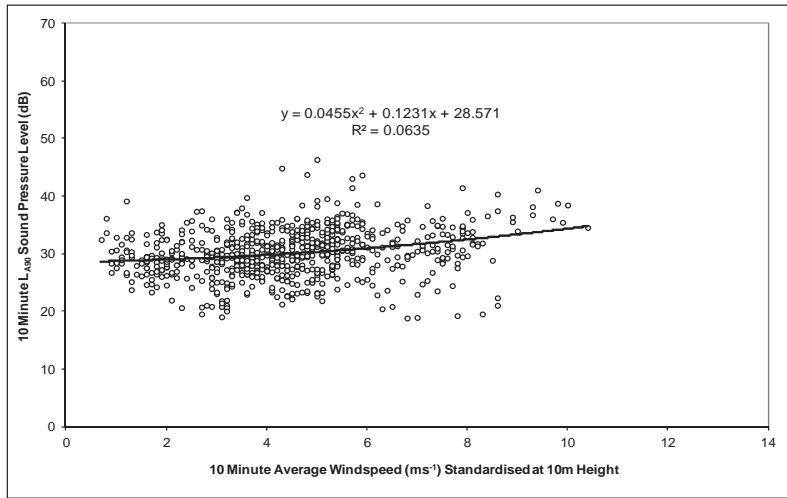
Client

Enoch Hill Wind Farm  
Environmental Statement

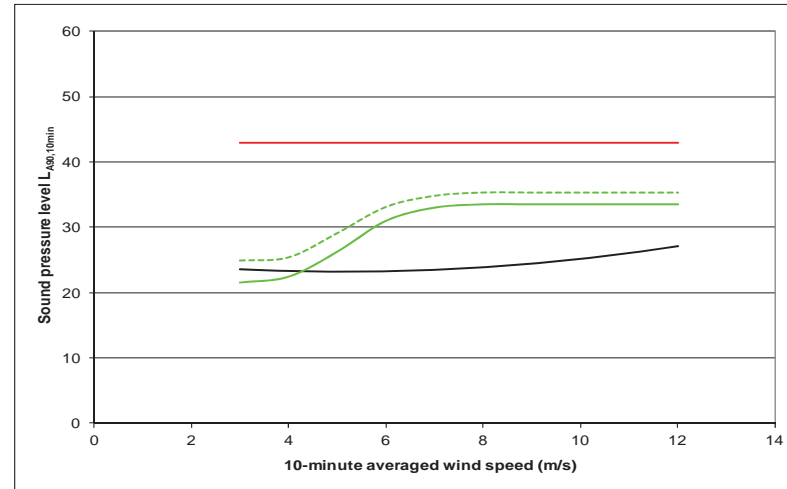
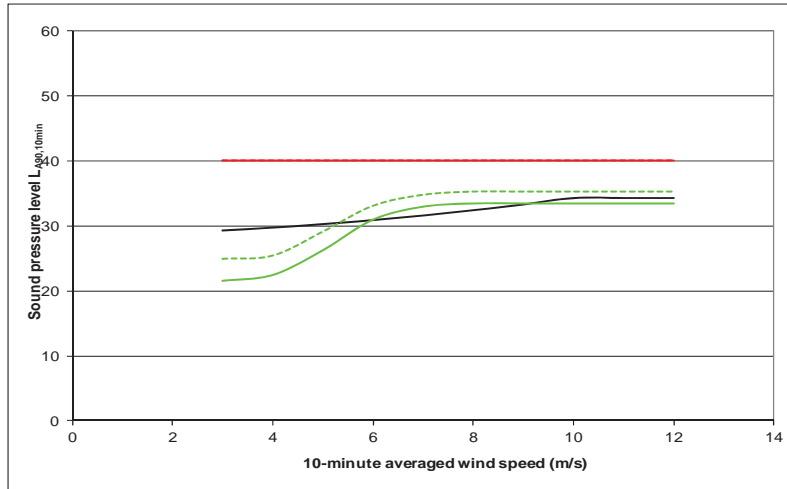
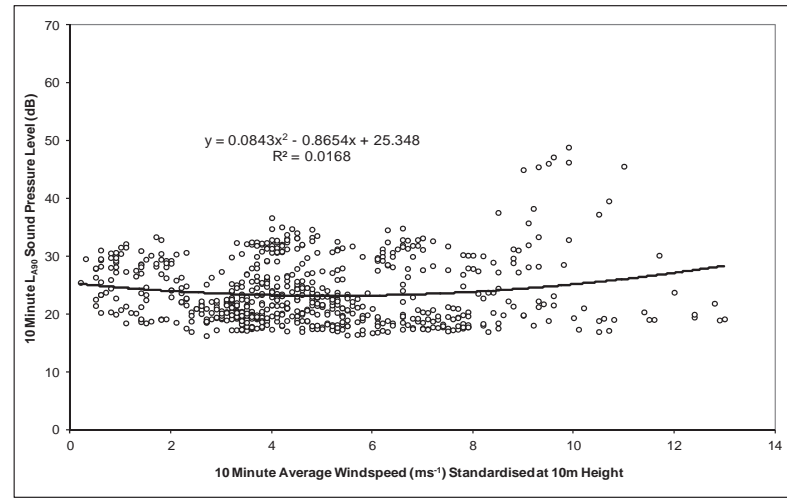


Figure 7.6  
R4 - Knockburnie  
noise assessment

Quiet Daytime



Night time



Key

- ETSU Derived Noise Limit,  $L_{A90, 10min}$
- Background Noise Level,  $L_{A90, 10min}$
- Predicted Wind Turbine Noise Level,  $L_{A90, 10min}$
- Predicted Cumulative Wind Turbine Noise Level,  $L_{A90, 10min}$

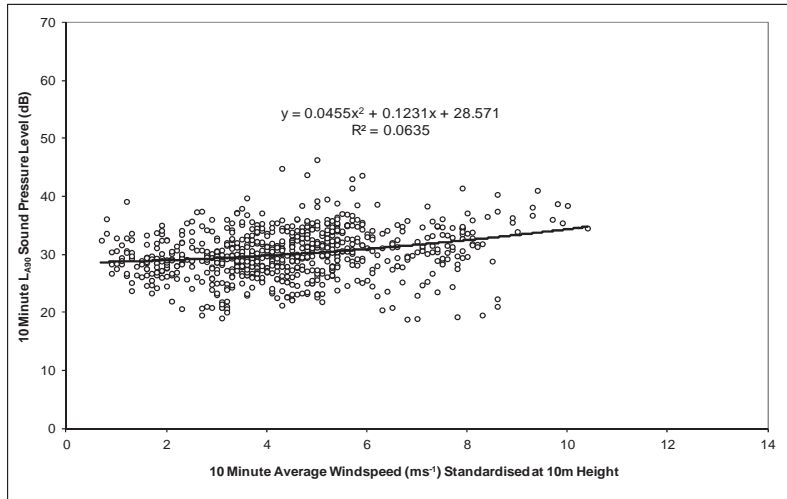
Client

Enoch Hill Wind Farm  
Environmental Statement

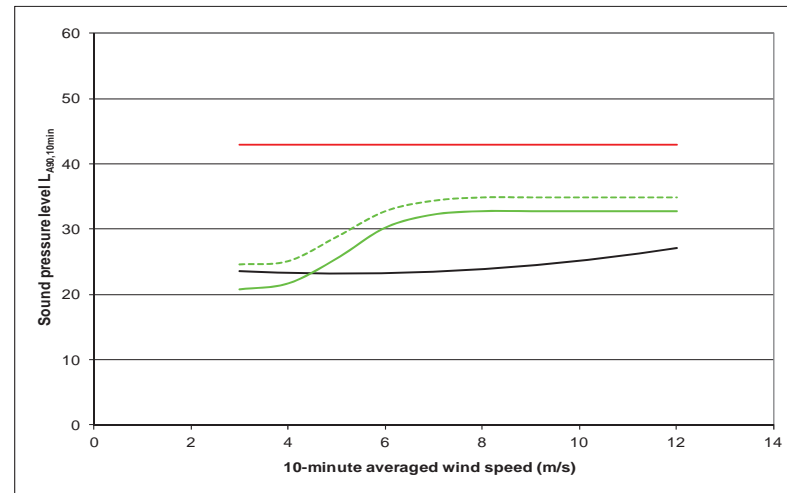
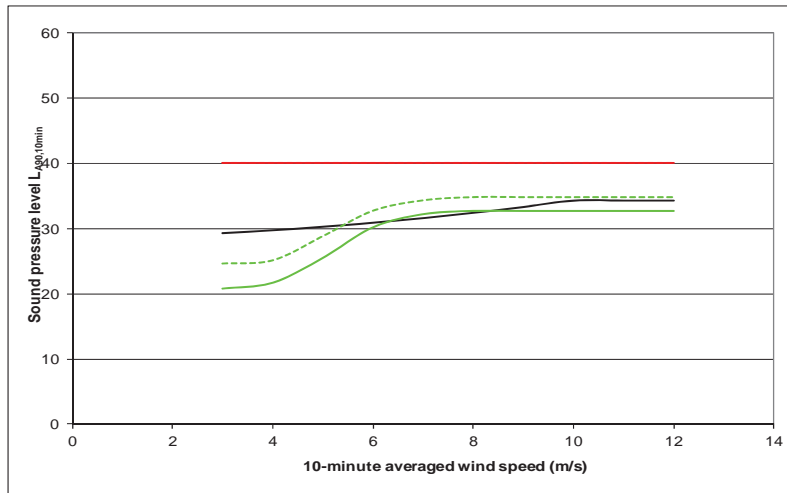
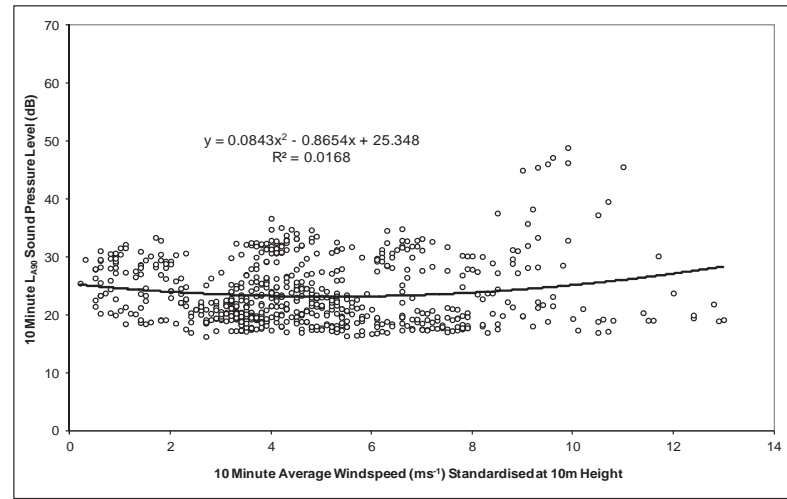


Figure 7.7  
R5 - Dalleagles  
noise assessment

Quiet Daytime



Night time



Key

- ETSU Derived Noise Limit,  $L_{A90, 10min}$
- Background Noise Level,  $L_{A90, 10min}$
- Predicted Wind Turbine Noise Level,  $L_{A90, 10min}$
- Predicted Cumulative Wind Turbine Noise Level,  $L_{A90, 10min}$

Client

Enoch Hill Wind Farm  
Environmental Statement

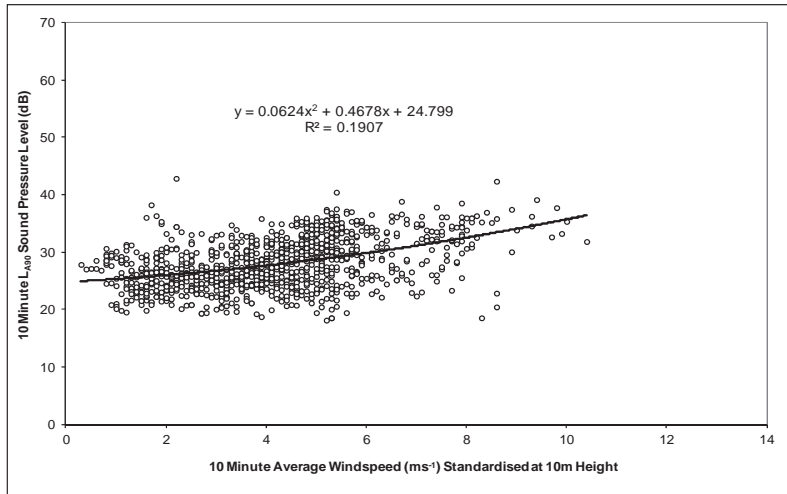


Figure 7.8  
R6 - Dalleagles Terrace  
noise assessment

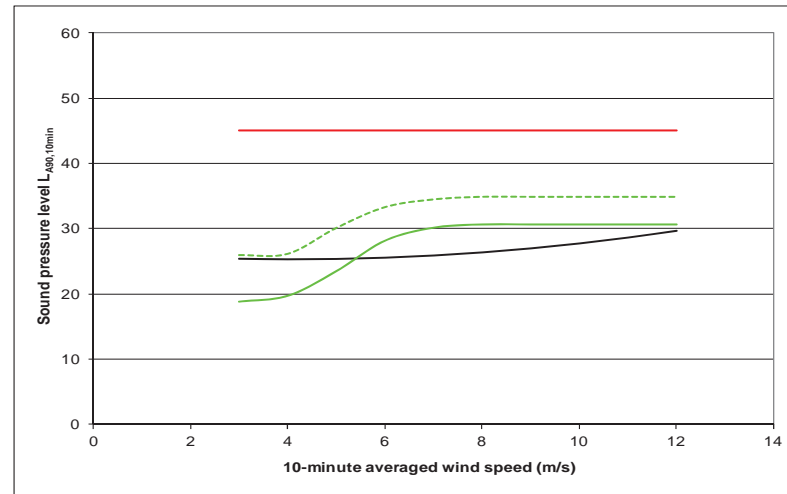
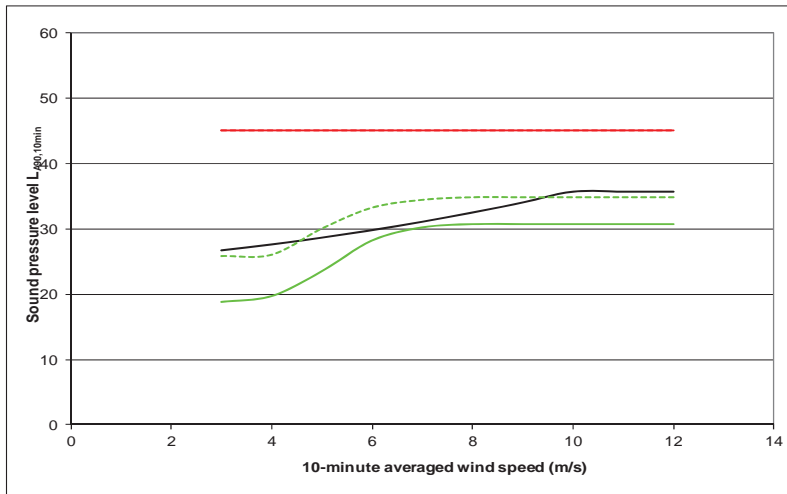
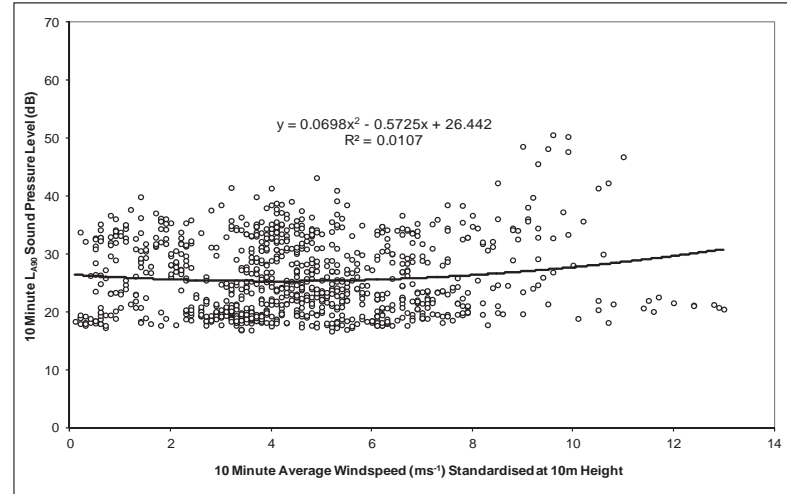




Quiet Daytime



Night time



Key

- ETSU Derived Noise Limit,  $L_{A90, 10min}$
- Background Noise Level,  $L_{A90, 10min}$
- Predicted Wind Turbine Noise Level,  $L_{A90, 10min}$
- Predicted Cumulative Wind Turbine Noise Level,  $L_{A90, 10min}$

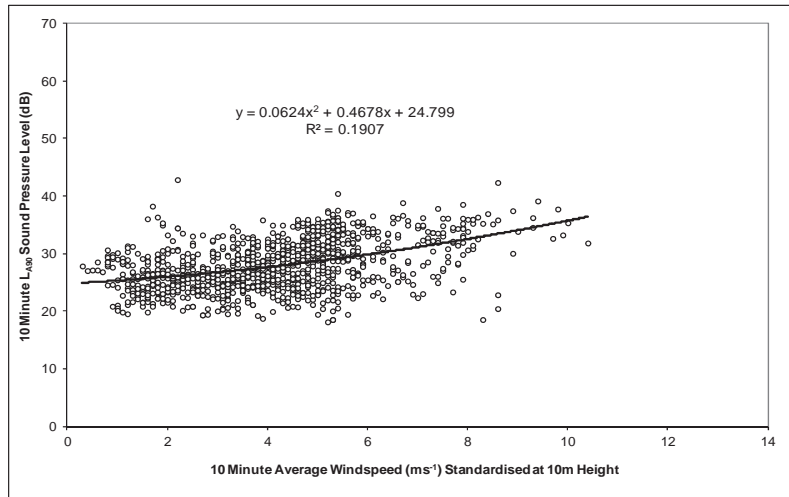
Client

Enoch Hill Wind Farm  
Environmental Statement

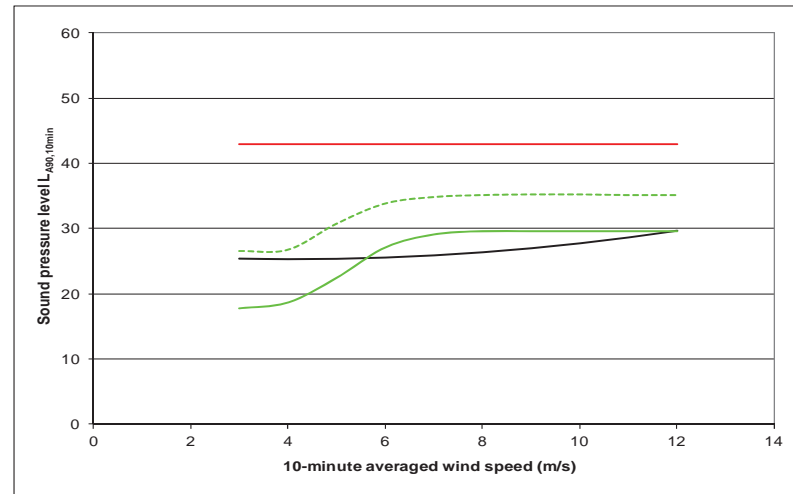
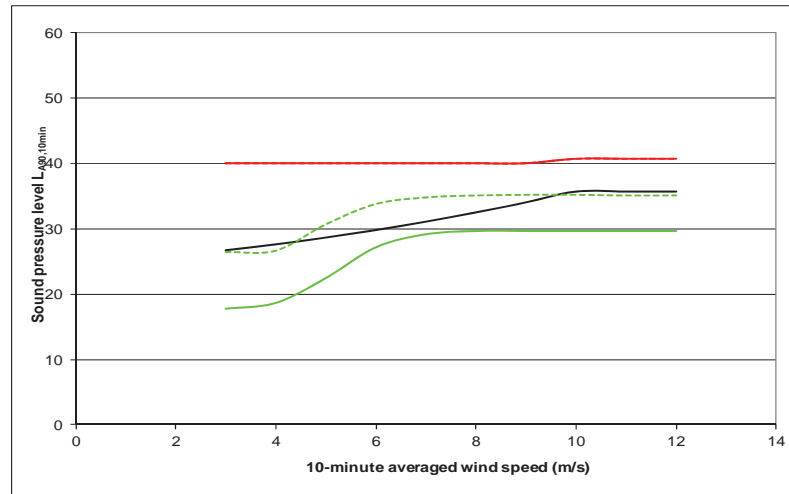
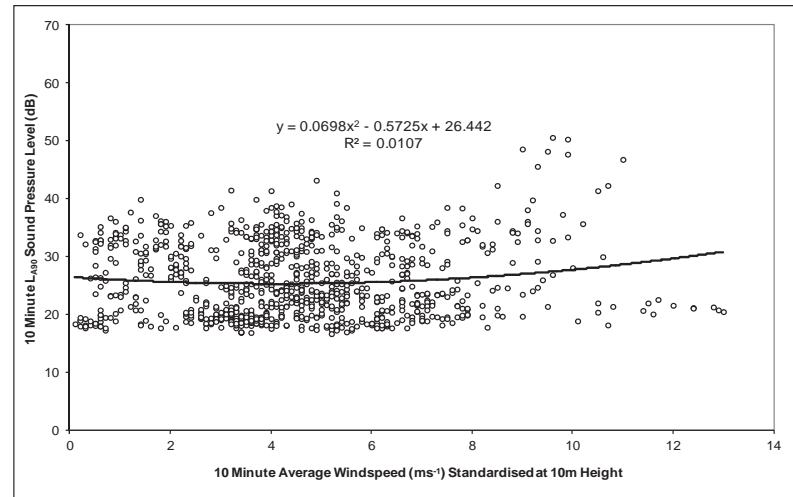


Figure 7.9  
R7 - Brockloch  
noise assessment

Quiet Daytime



Night time



Key

- ETSU Derived Noise Limit,  $L_{A90, 10min}$
- Background Noise Level,  $L_{A90, 10min}$
- Predicted Wind Turbine Noise Level,  $L_{A90, 10min}$
- - - Predicted Cumulative Wind Turbine Noise Level,  $L_{A90, 10min}$

Client

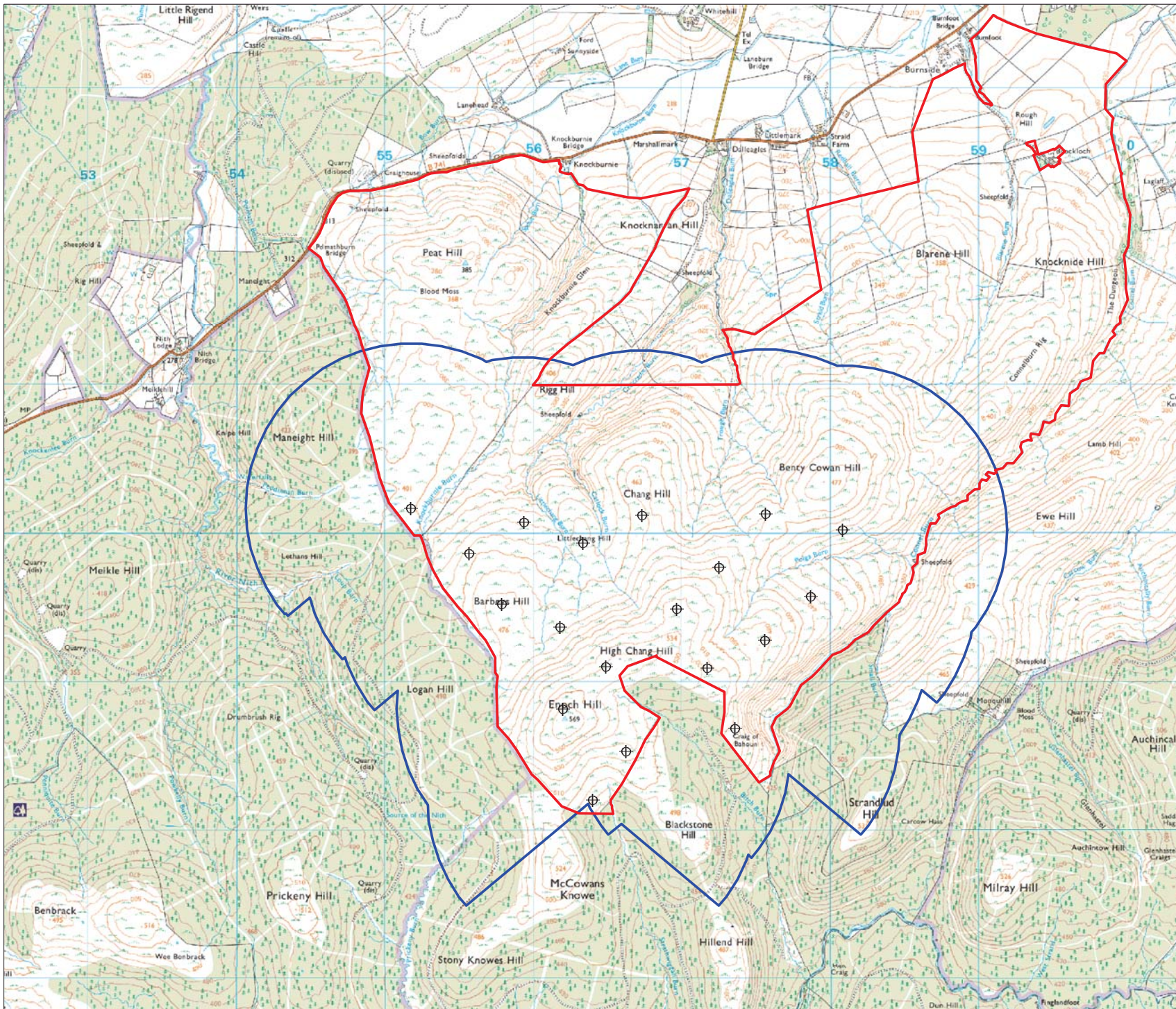
Enoch Hill Wind Farm  
Environmental Statement



Figure 7.10  
R8 - Laglaff  
noise assessment







Key

- Site boundary
- Shadow flicker study area
- + Proposed turbine location

Note: Shadow flicker study area of 10x rotor diameter, plus 50m micro-siting buffer. Rotor diameter assumed to be 106m.



Client

Enoch Hill Wind Farm  
Environmental Statement



**Figure 8.1**  
Shadow Flicker Study Area