
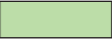



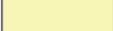


Key

	90° horizontal field of view		1 - 4 blade tips may be visible		9 - 12 blade tips may be visible
	53.5° horizontal field of view		5 - 8 blade tips may be visible		13 - 16 blade tips may be visible

Viewpoint Parameters

OS reference:	E260 263, N614 753
Ground Level Elevation:	189m AOD
Camera Height:	1.5m AGL
Direction of view to site centre ³ :	208°
Distance to nearest turbine:	7,184m
Number of blade tips theoretically visible ⁴ :	16
Number of hubs theoretically visible ⁴ :	15
Date and time of viewpoint photography:	10/06/2015 @ 12:00
Camera:	Canon EOS 5D Mk2
Lens:	50mm (Canon EF 50mm f/1.8)

Information on the limitations of visualisations:

Visualisations of wind farms have a number of limitations which you should be aware of when using them to form a judgement on a wind farm proposal. These include:

- A visualisation can never show exactly what the wind farm will look like in reality due to factors such as: different lighting, weather and seasonal conditions which vary through time and the resolution of the image;
- The images provided give a reasonable impression of the scale of the turbines and the distance to the turbines, but can never be 100% accurate;
- A static image cannot convey turbine movement, or flicker or reflection from the sun on the turbine blades as they move;
- The viewpoints illustrated are representative of views in the area, but cannot represent visibility at all locations;
- To form the best impression of the impacts of the wind farm proposal these images are best viewed at the viewpoint location shown;
- The images must be printed at the right size to be viewed properly (260mm by 820mm);
- You should hold the images flat at a comfortable arm's length. If viewing these images on a wall or board at an exhibition, you should stand at arm's length from the image presented.
- The ZTV presented here takes no account of the screening effects of vegetation or buildings.

Additional notes:

1. This figure has been based on the following parameters:
Turbine layout file: LENOCH048.WFL

Hub height: 80m • Rotor diameter: 100m • Height to blade tip: 130m

2. Turbine positions could be subject to micro-siting (typically up to 50m).

3. Direction given as bearing relative to Grid North (BNG).

4. The number of turbine blades and hubs theoretically visible is counted from the wireframe in sets of 3 and ignores the screening effects of any intervening objects and forestry.

**Enoch Hill Wind Farm
Further Environmental
Information**

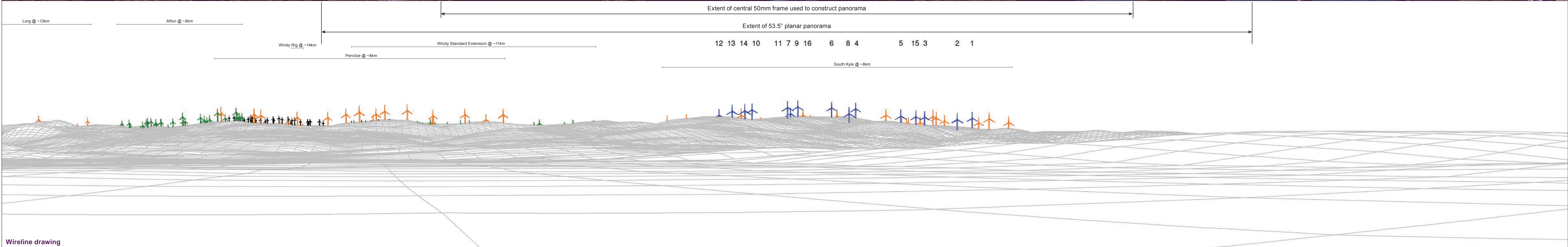


**Figure 9.33a
Viewpoint 7: Lochside Hotel**



Baseline photograph

This image provides landscape and visual context only



Wireline drawing

Wind Farm Key: Enoch Existing Consented Application

OS reference: E260 263, N614 753
 Eye level: 190.5m AOD
 Direction of view: 208°
 Nearest turbine: 7,184m

Horizontal field of view: 90° (cylindrical projection)
 Principal distance: 522mm
 Paper size: 841mm x 297mm (half A1)
 Correct printed image size: 820 x 130mm

Camera: Canon EOS 5D Mk2
 Lens: 50mm (Canon EF 50mm f/1.8)
 Camera height: 1.5m AGL
 Date and time: 10/06/2015 12:00

[Enoch Hill Wind Farm Further Environmental Information](#)



Figure 9.33b Viewpoint 7: Lochside Hotel

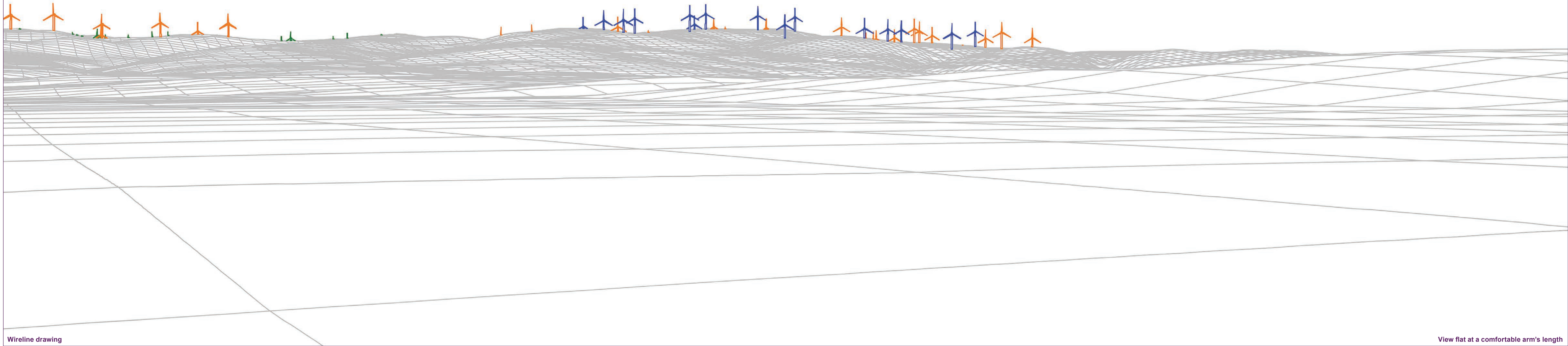
September 2016

Windy Standard Extension @ ~11km

Pencloe @ ~8km

South Kyle @ ~8km

12 13 14 10 11 7 9 16 6 8 4 5 15 3 2 1



Wireline drawing

View flat at a comfortable arm's length

Wind Farm Key: Enoch Existing Consented Application

OS reference:	E260 263, N614 753	Horizontal field of view:	53.5° (planar projection)	Camera:	Canon EOS 5D Mk2
Eye level:	190.5m AOD	Principal distance:	812.5mm	Lens:	50mm (Canon EF 50mm f/1.8)
Direction of view:	208°	Paper size:	841mm x 297mm (half A1)	Camera height:	1.5m AGL
Nearest turbine:	7,184m	Correct printed image size:	820 x 260mm	Date and time:	10/06/2015 12:00

[Enoch Hill Wind Farm](#)
[Further Environmental Information](#)



Figure 9.33c
Viewpoint 7: Lochside Hotel

September 2016

37898-GOS030.indd switm



Photomontage

View flat at a comfortable arm's length

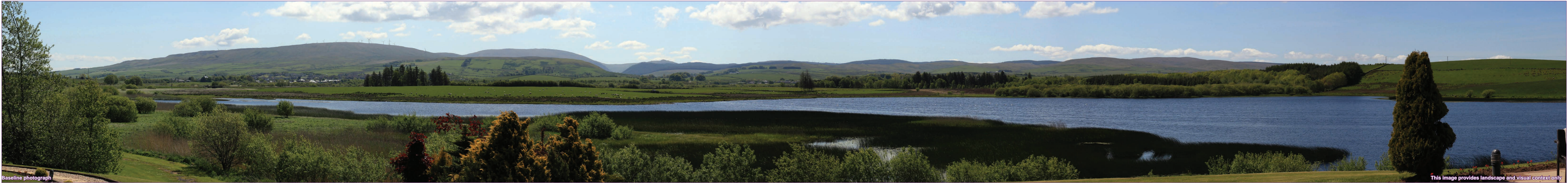
OS reference:	E260 263, N614 753	Horizontal field of view:	53.5° (planar projection)	Camera:	Canon EOS 5D Mk2
Eye level:	190.5m AOD	Principal distance:	812.5mm	Lens:	50mm (Canon EF 50mm f/1.8)
Direction of view:	208°	Paper size:	841mm x 297mm (half A1)	Camera height:	1.5m AGL
Nearest turbine:	7,184m	Correct printed image size:	820 x 260mm	Date and time:	10/06/2015 12:00

Enoch Hill Wind Farm
Further Environmental Information



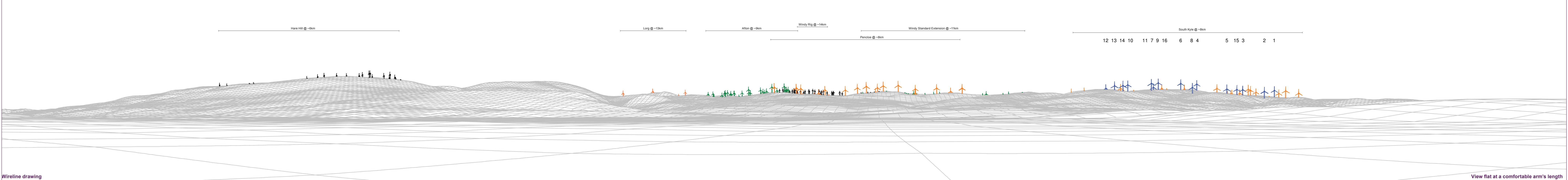
Figure 9.33d
Viewpoint 7: Lochside Hotel

September 2016



Baseline photograph

This image provides landscape and visual context only



Wireline drawing

View flat at a comfortable arm's length

OS reference:	E260 263, N614 753	Horizontal field of view:	135° (cylindrical projection)	Camera:	Canon EOS 5D Mk2
Eye level:	190.5m AOD	Principal distance:	522mm	Lens:	50mm (Canon EF 50mm f/1.8)
Direction of view:	208°	Paper size:	1,138mm x 297mm	Camera height:	1.5m AGL
Nearest turbine:	7,184m	Correct printed image size:	1188 x 130mm	Date and time:	10/06/2016 12:00

Enoch Hill Wind Farm
Further Environmental Information



Figure 9.33e
Viewpoint 7: Lochside Hotel

September 2016