



RWE



Enoch Hill Wind Farm

Christmas Newsletter

December 2024

Dear Resident,

We are writing to bring you an end of year update for our Enoch Hill Wind Farm Construction Project and also provide an update on the Community Fund that will be made available to the local area in relation to the project, once operational.

In our August newsletter we notified residents along our component delivery route of the anticipated schedule of night time deliveries. We are pleased to inform you that all deliveries were completed on 1st November 2024 and the TTROs (Temporary Traffic Regulation Orders) that were due to stay in place until 28th February 2025, have now been requested to be cancelled with ARA to free up the road space once again.

We would also like to inform you that our site will be closing on 20th December 2024, and re-opening on 6th January 2025 to allow our site team a well-deserved rest over the festive period.

During this period the generators on site required for keeping equipment warm and dry will need to be refuelled, therefore a small number of the team will attend site on 27th December 2024 and 3rd January 2025 to carry out the re-fuelling works.

We now have 14 out of 15 turbines installed on site, with the 15th turbine installed up to base and mid-tower section. The remaining top tower, nacelle, hub and blades will be installed after the Christmas Break. Once the final turbine is fully installed you will see the main crane being de-mobilised from site. This will conclude the major construction works period.

In the new year we will continue with the final re-instatement works required to complete the remaining minor civil works on site and also start the pre-commissioning works on the turbines.

We will also be carrying out some re-instatement works at Connel Burn on the B741 to the temporary over run area in the New Year.

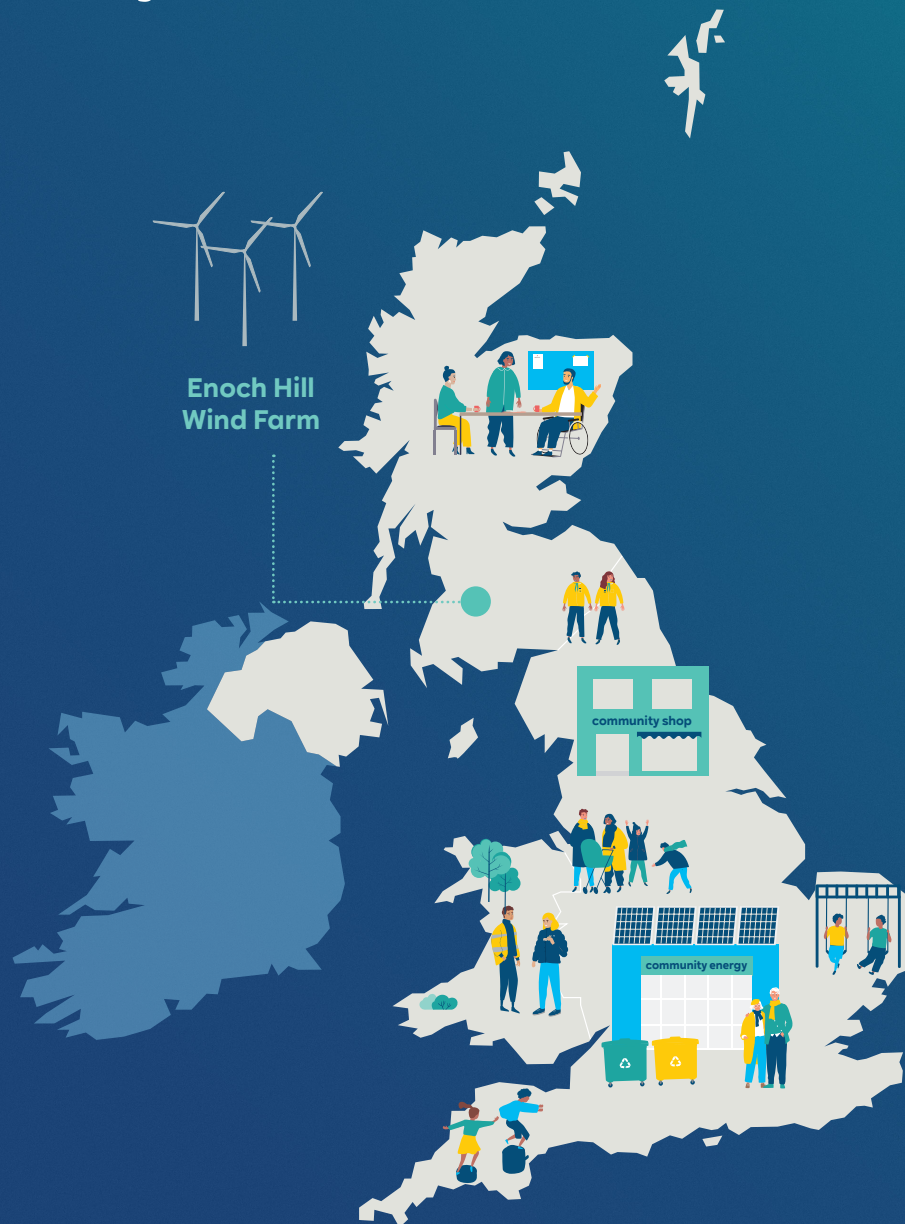
Wishing you, your family and the wider community a safe and happy holidays from all of the Enoch Hill Wind Farm Team.



For any queries or concerns please contact us at Enoch_hill@rwe.com



Enoch Hill Wind Farm Community Fund



RWE is committed to supporting the communities that neighbour our wind farms, investing £5 million in 2023 alone.

We have a strong track record of engaging local communities to decide how each fund should be structured and administered. We have a long history of engaging with communities throughout the process of developing and operating several other wind farms over many years.

Enoch Hill Wind Farm, once operational, will bring with it an annual community fund worth £350,000 per year, index linked, for the operational lifetime of the wind farm.

The consultation process for the Enoch Hill Wind Farm Community Fund has been taking place right through the development and construction of the wind farm. RWE representatives also attended the New Cumnock Community Council and Community Liaison Committee meetings in November 2024 to hear the views of those groups. Now we're offering everyone an opportunity to tell us what they think about the fund. Please see overleaf for how you can get involved; we'd love to hear from you.

Investing in Scottish Communities



“The training has allowed me to carry out the sheep dipping process for myself and I will now be able to do this for the surrounding neighbours.”

Derek | Crofter

Here are some examples of how our Community Funds have helped in other Scottish Communities:

Supporting education and training in Caithness

In Caithness several of the local grants panels that decide how RWE community funds are allocated have decided to use part of their funding to help local residents pursue education and training.

These awards are designed to provide access to learning opportunities that arm individuals with a diverse set of skills, crucial for securing or maintaining jobs in the region's key industries.

The funds have supported degree courses, masters qualifications, HND courses as well as more vocational courses that have enabled people to set up businesses or improve employment prospects.

One local person that has benefited is Derek, a local crofter who received funding for a two-day course that enabled him to achieve his Level 2 award in the Safe Use of Sheep Dips for Crofters:

“The funding provided a means for me to carry out this training which without the funding I probably would not have done. The training has allowed me to carry out the sheep dipping process for myself and I will now be able to do this for the surrounding neighbours. This has helped reduce my own costs and is something that my neighbours will also benefit from.”

Supporting affordable childcare in Argyll

A local community panel decide on how the RWE An Suidhe Wind Farm Community Fund is spent. They have decided to make regular awards to a community-owned childcare facility that is helping to revitalise the local economy.

Cairndow Community Childcare provides affordable childcare for children aged six months to 12 years in Inveraray. An acute labour shortage in the mid-Argyll area has been exacerbated by a lack of childcare, preventing local people from taking up employment, or families with young children from moving into the area.

As the only after-school or 'wrap-around' childcare service in the area outside term time, Cairndow Community Childcare is vital and wind farm community funds provide a reliable, long term income stream for this community business.

To find out more about RWE's community funds you can visit our website [rwe.com/in-your-community](https://www.rwe.com/in-your-community)



Get involved

We would love to hear from local people to find out how they think the Enoch Hill Wind Farm Community Fund might best support local communities. Please take part by completing our online survey by scanning the QR code below or visiting this website: givemyview.com/enochhill



Next steps

The consultation will remain open until 31st January 2025 and the results will be communicated in Spring/Summer 2025. This will include plans for the fund administration.

The community fund will be made available once the project enters commercial operations which is likely to be late summer 2025.

If you have any further questions, or if you need help completing the survey, please contact our community investment team:

- ✉ community.investment@rwe.com
- ☎ **07760 190477**

