

RWE

Enoch Hill Wind Farm

July 2024 Newsletter

In this issue...

Project update

Delivery route and timetable

RWE in your community

Project Update

Welcome to the latest edition of the Enoch Hill newsletter, bringing you updates on the recent developments of our onshore wind farm.

Since our last newsletter we have completed some major milestones; all our turbine foundations and our on-site access tracks are fully constructed. The control building construction is nearing completion, with internal fit out works on-going and the majority of our earthworks are complete.

Our 15 turbines are made up of multiple components which will be assembled on site. Each turbine component will be transported using specialist delivery vehicles and trailers and are classified as Abnormal Loads (ALs).

In preparation for turbine deliveries we have been carrying out road modifications works at several locations along the A76 and B741.

To test the suitability of these modifications our first trial run took place on Saturday 11th May. The second part of the trial run is planned for the morning of the **29th July**. This will involve a trailer representing the length of a turbine blade, being escorted by police along the A76 just after Bellfield Interchange and will end along the B741 at Burnfoot Road.

All delivery convoys will be escorted by support vehicles from the delivery partner and Police Scotland.

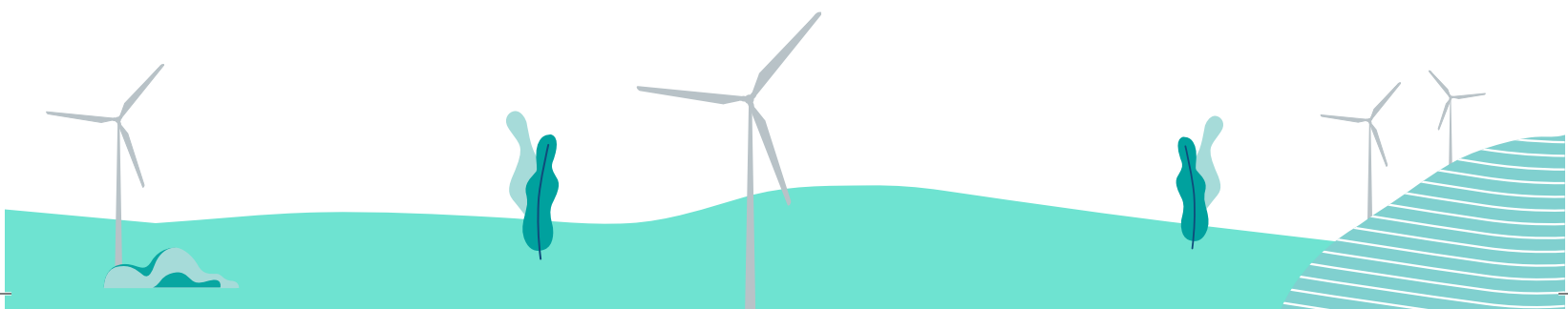




Figure 01

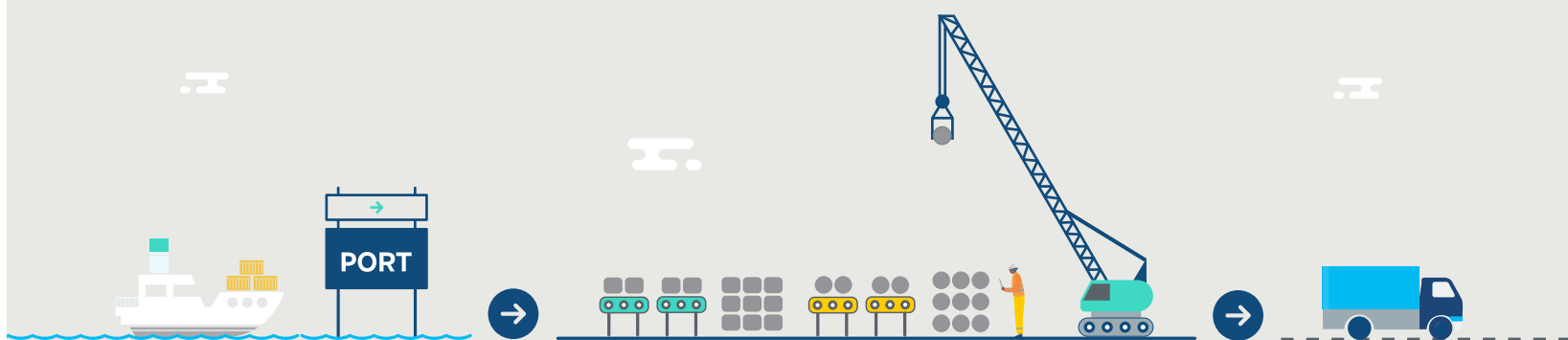
Delivery route

The components will be loaded onto AIL vehicles at King George V Docks, Glasgow, travel westbound, then merge on to M8 at J25A.

Non-blade loads will continue east and U-turn back onto M8 Westbound at Seaward Interchange. Blade loads will continue on M74, join the M73 and U-turn at M8/M73 Ballieston interchange. Loads will then continue back on the M73, M74 and M8, diverging onto the M77 towards Bellfield Interchange and exit to join the A76.

Loads will then proceed south east to New Cumnock and take the right hand turn onto the B741, to continue to the site entrance.

The full delivery route is shown in figure 01.



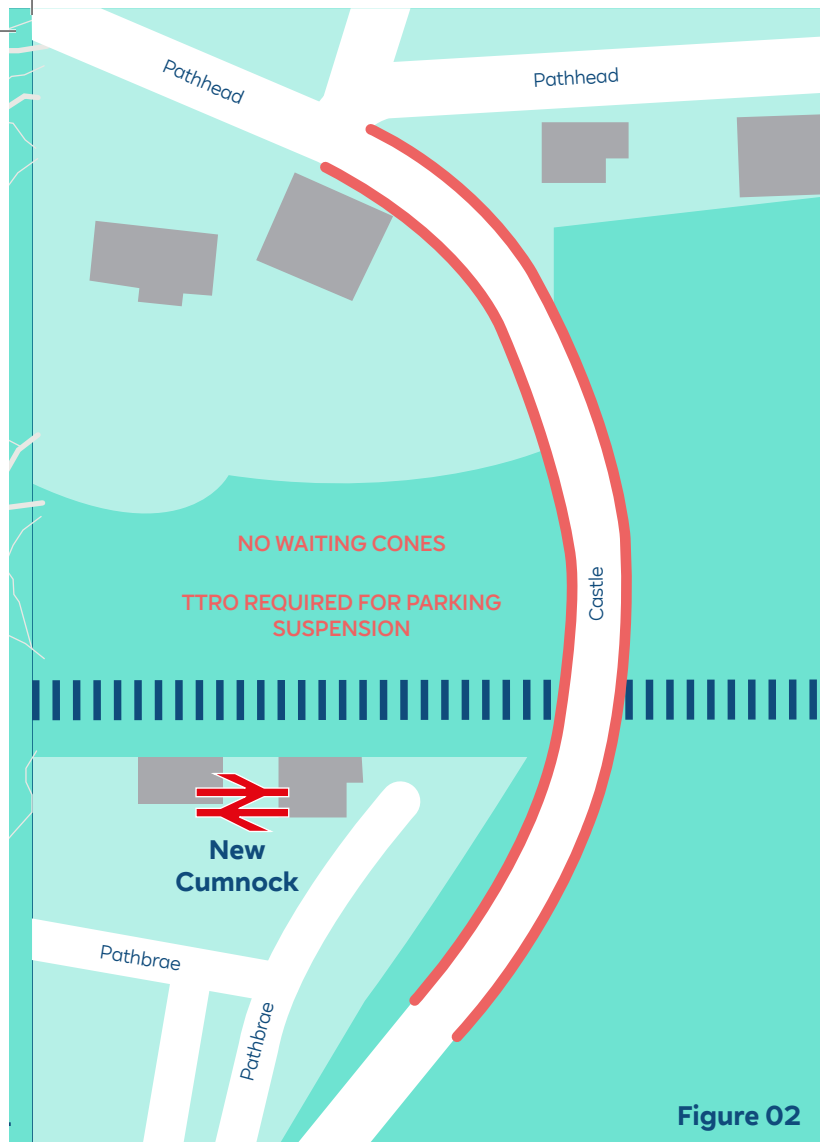


Figure 02



Figure 03

Delivery timetable

For the past year RWE have been working closely with the turbine manufacturers (Nordex), their delivery partners (McFadyen's Transport Ltd) and local authorities to minimise disruption to the local community.

Turbine component deliveries are scheduled to commence on the evening of 6th August 2024 and will continue periodically (approx. 3 evenings per week) through until January 2025. Full details of the delivery schedule will be uploaded to the Enoch Hill website.

The convoys will travel between approximately 9pm and midnight, to minimise disruption to road users. The delivery schedule is subject to change, dependant on police availability and inclement weather.



The delivery schedule will be updated regularly, please visit www.rwe.com/enochhill for the latest information.



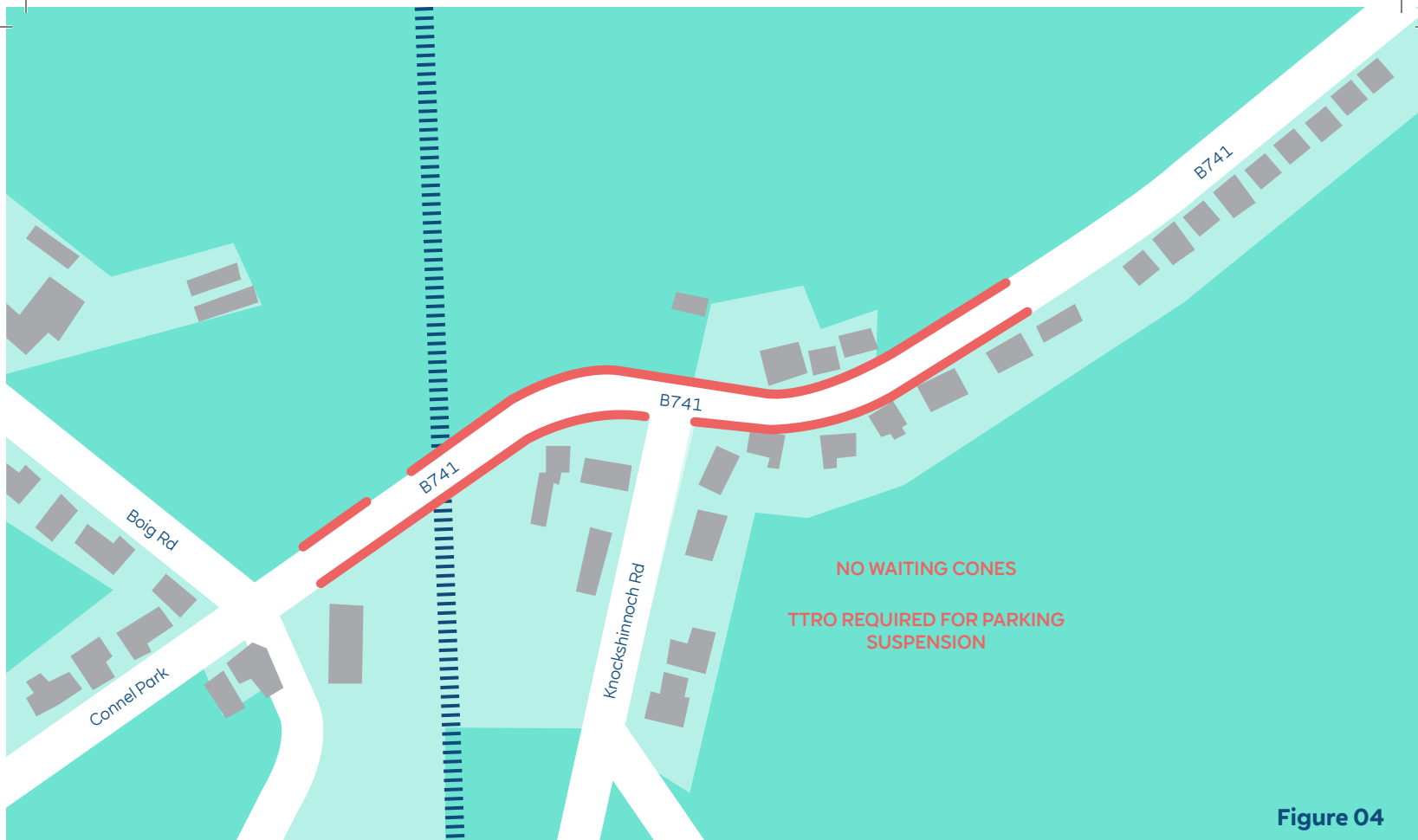


Figure 04

What does this mean for the local community?

We realise that any deliveries will affect the surrounding community. We apologise in advance for any potential delays and inconvenience this may cause.

We are carrying out monthly video/photographic surveys on the delivery route, as required by ARA (Ayrshire Roads Alliance), to monitor the condition of the roads during the delivery period. This includes roads, bridges/culverts and structures close to the road, including up to the site entrance, therefore we would like to bring this to the attention of local residents should you witness the surveys being carried out.

As part of the abnormal load permit, we are required to have Temporary Traffic Regulation Orders (TTROs) in place for the duration of the deliveries. TTROs are legal orders that require certain areas of public road space to be kept clear to allow for the delivery vehicles to safely pass through.

Get in touch



For any queries or concerns please contact us via the following:

✉ enoch_hill@rwe.com

TTROs are in place at the three following areas :

- 1 **TM001** – A76 Pathhead, New Cumnock (Figure 02)
- 2 **TM002** – A76/B741 Afton Bridge, nr New Cumnock Primary School (Figure 03)
- 3 **TM003** – B741, Connel Burn (Figure 04)

The TTROs are in force from 3rd July 2024 until 28th February 2025. Cones will be placed in relevant areas to prevent parking/obstruction, however the cones will be removed for the periods in which deliveries are not due to take place to minimise disruption.

