



Rosehall Wind Farm. For illustrative purposes.

Enoch Hill Wind Farm Newsletter

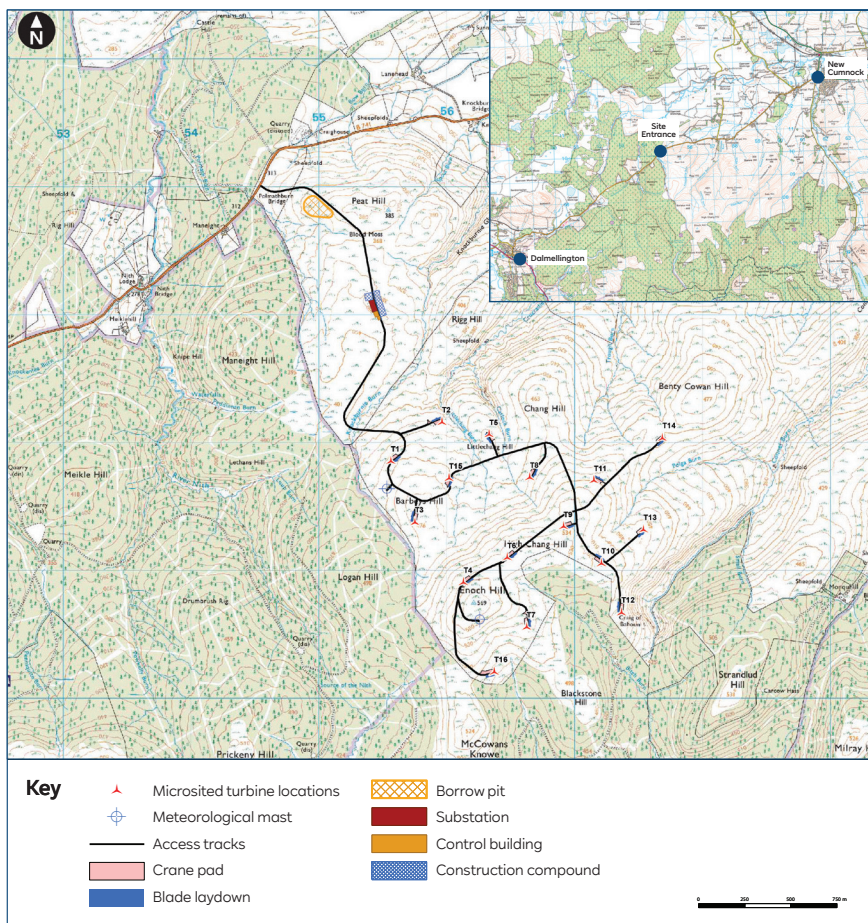
June 2023

We are about to begin construction on our Enoch Hill Wind Farm on the 5th of June, 2023. Enoch Hill is located between New Cumnock and Dalmellington. This newsletter will keep you up to date with progress but also provide you with our contact information.

Enoch Hill Wind Farm is set to commence construction. The initial site entrance, construction compound and access tracks will begin shortly. We're planning to start on site on the 5th of June.

The plan shows where we're creating the site entrance and this is where the initial construction work will be focused on. There's a need to install a set of temporary traffic lights in order to control the flow of traffic past the site entrance. The lane closure on the B741 will be for no longer than 4 weeks (5th June until 2nd July). After the 4 weeks both lanes will be open and there will then be a TTRO (temporary traffic regulation order) in place for the duration of construction works which reduces the speed limit to 40MPH. These road safety measures have been made in consultation with Ayrshire Roads Alliance (ARA) and East Ayrshire Council (EAC). We're sorry for this inconvenience, and we'll do everything we can to minimise disruption.

Here are contact details for RWE and the onsite contractors that will be able to help if anything arises.



Contact details:
 Farrans Support (onsite contractor) – tel: 01483 717 321
 RWE Support – email: enoch_hill@rwe.com