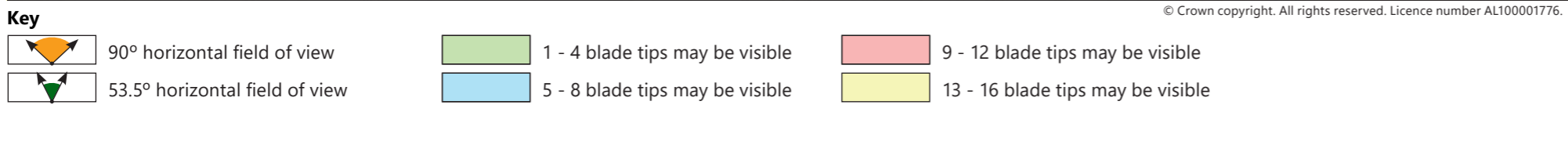
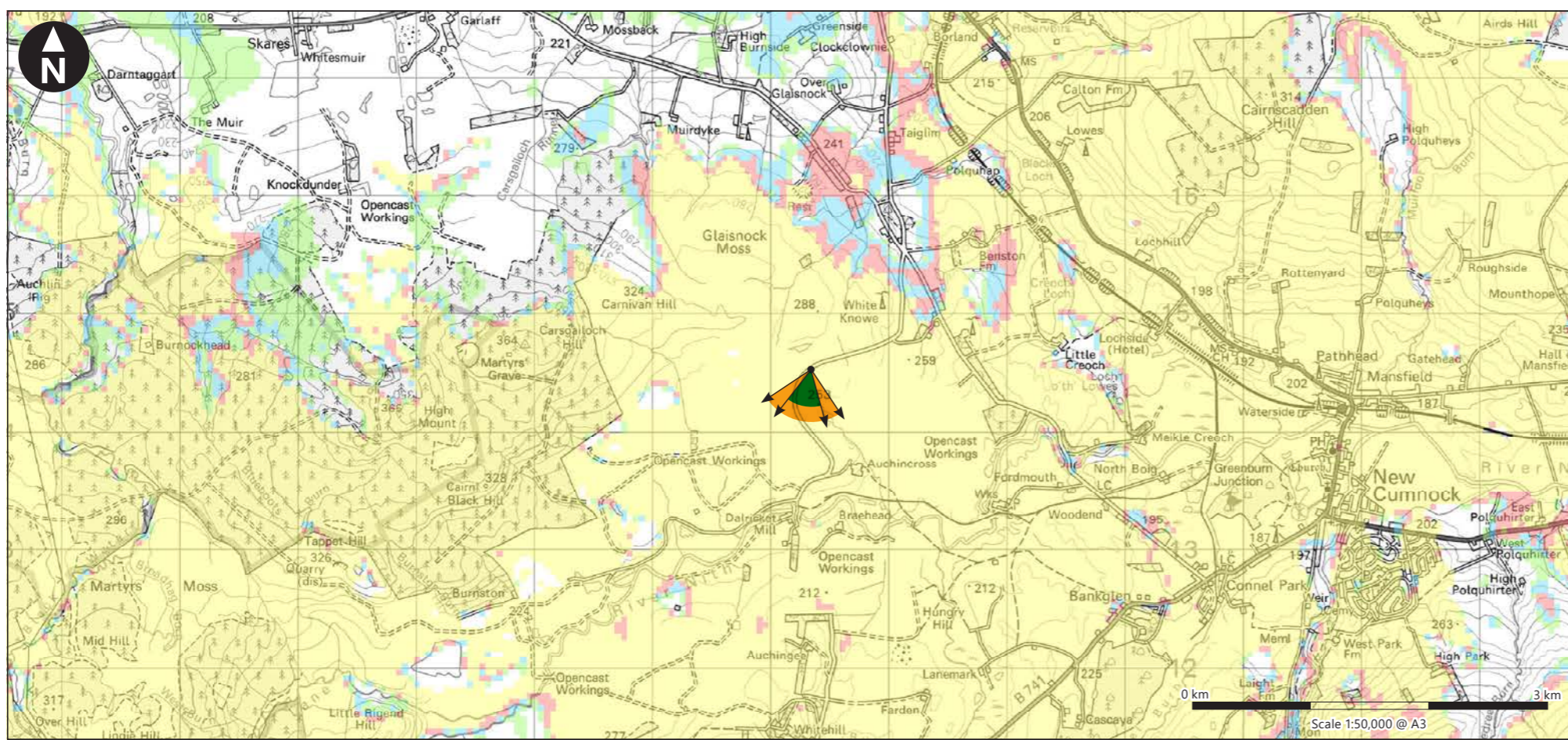
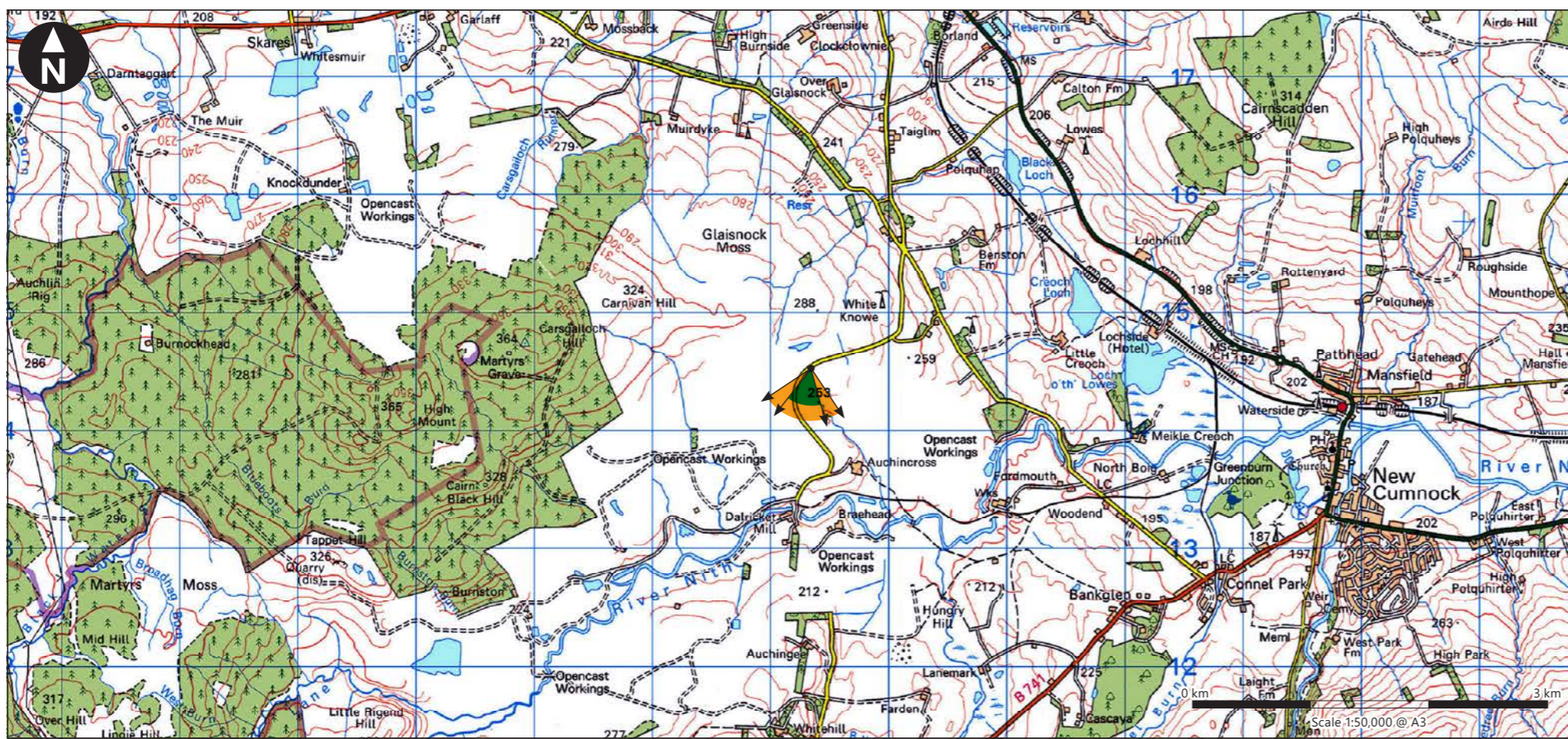


H:\Projects\37898 - SUB - NTH Enoch Hill\Drawings\2020 Variation\37898-WOOD-XX-02-DR-Z-0034.indd Originator: wisc03



**Viewpoint Parameters**

OS reference:	E257 336, N614 528
Ground Level Elevation:	282m AOD
Camera Height:	1.5m AGL
Direction of view to site centre <sup>3</sup> :	186°
Distance to nearest turbine:	6,479m
Number of blade tips theoretically visible <sup>4</sup> :	16
Number of hubs theoretically visible <sup>4</sup> :	15
Date and time of viewpoint photography:	20/03/2020 @ 11:05
Camera:	Canon EOS 5D Mk2
Lens:	50mm (Canon EF 50mm f/1.8)

**Information on the limitations of visualisations:**

Visualisations of wind farms have a number of limitations which you should be aware of when using them to form a judgement on a wind farm proposal. These include:

- A visualisation can never show exactly what the wind farm will look like in reality due to factors such as: different lighting, weather and seasonal conditions which vary through time and the resolution of the image;
- The images provided give a reasonable impression of the scale of the turbines and the distance to the turbines, but can never be 100% accurate;
- A static image cannot convey turbine movement, or flicker or reflection from the sun on the turbine blades as they move;
- The viewpoints illustrated are representative of views in the area, but cannot represent visibility at all locations;
- To form the best impression of the impacts of the wind farm proposal these images are best viewed at the viewpoint location shown;
- The images must be printed at the right size to be viewed properly (260mm by 820mm);
- You should hold the images flat at a comfortable arm's length. If viewing these images on a wall or board at an exhibition, you should stand at arm's length from the image presented.
- The ZTV presented here takes no account of the screening effects of vegetation or buildings.


**Additional notes:**

1. This figure has been based on the following parameters:  
Turbine layout file: LENOCH062.WFL
  - Hub height: 81.9m
  - Rotor diameter: 136m
  - Height to blade tip: 149.9m
2. Turbine positions could be subject to micro-siting (typically up to 50m).
3. Direction given as bearing relative to Grid North (BNG).
4. The number of turbine blades and hubs theoretically visible is counted from the wireframe in sets of 3 and ignores the screening effects of any intervening objects and forestry.
5. This figure is produced in accordance with SNH Visual Representation of Wind Farms 2017 guidance and also broadly accords with the Landscape Institute's Technical Guidance Note 6/19 (Type 4 Visualisation).

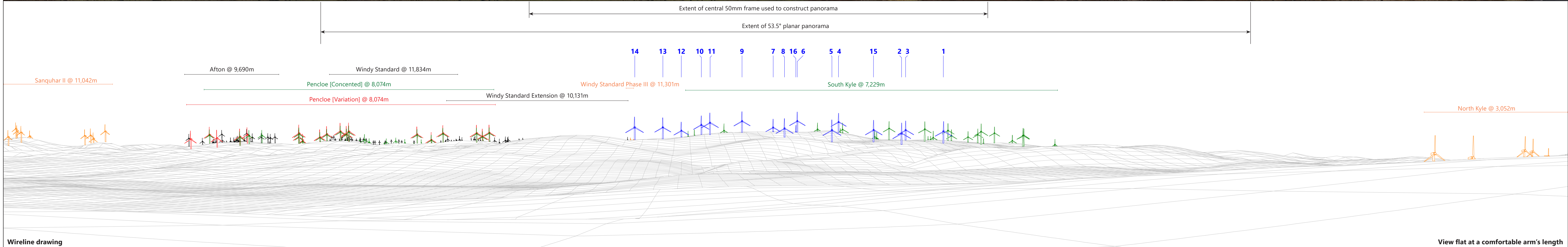
Client	
Enoch Hill Wind Farm Variation Application EIA Report	

**Figure V9.31a**  
**Viewpoint 5:**  
**Highpoint north of site (near Auchinross)**

May 2020



© Crown copyright. All rights reserved. Licence number AL100001776.



<b>Wind Farm Key:</b> 	OS reference:	E257 336, N614 528	Horizontal field of view:	90° (cylindrical projection)	Camera:	Canon EOS 5D Mk2	Client		Enoch Hill Wind Farm Variation Application EIA Report	<b>Figure V9.31b</b> <b>Viewpoint 5:</b> <b>Highpoint north of site (near Auchinross)</b>	May 2020 	
	Eye level:	283.5m AOD	Principal distance:	522mm	Lens:	50mm (Canon EF 50mm f/1.8)						
	Direction of view:	191°	Paper size:	841mm x 297mm (half A1)	Camera height:	1.5m AGL						
	Nearest turbine:	6,479m	Correct printed image size:	820 x 130mm	Date and time:	20/03/2020 11:05						

View flat at a comfortable arm's length

H:\Projects\17898 - SUB - NTH Enoch Hill\0400 Drawings\2020 Variation\37898-WOOD-XK-02-DR-2-0034-1.rvt  
 Originator: wisco3

14 13 12 10 11 9 7 8 16 6 5 4 15 2 3 1

Windy Standard @ 11,834m

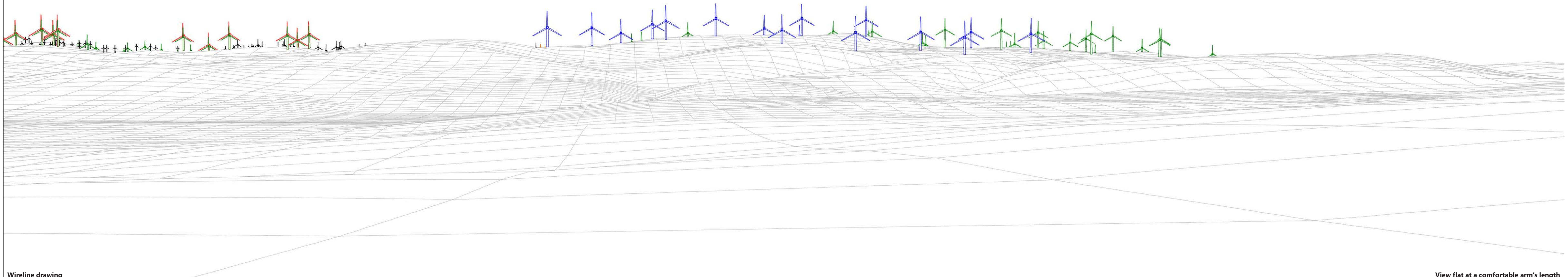
Pencloe [Concented] @ 8,074m

Windy Standard Extension @ 10,131m

Pencloe [Variation] @ 8,074m

Windy Standard Phase III @ 11,301m

South Kyle @ 7,229m



Wireline drawing

View flat at a comfortable arm's length

**Wind Farm Key:** Enoch Hill Wind Farm Existing Consented Application Scoping Variation

OS reference:	E257 336, N614 528	Horizontal field of view:	53.5° (planar projection)	Camera:	Canon EOS 5D Mk2
Eye level:	283.5m AOD	Principal distance:	812.5mm	Lens:	50mm (Canon EF 50mm f/1.8)
Direction of view:	191°	Paper size:	841mm x 297mm (half A1)	Camera height:	1.5m AGL
Nearest turbine:	6,479m	Correct printed image size:	820 x 260mm	Date and time:	20/03/2020 11:05



Client  
Enoch Hill Wind Farm Variation Application  
EIA Report

**Figure V9.31c**  
**Viewpoint 5:**  
**Highpoint north of site (near Auchinross)**

May 2020



H:\Projects\17898 - SUB - NTH Enoch Hill\0400 Drawings\2020 Variations\17898-WOOD-XX-02-DR-2-0034.indd Originator: wis03

H:\Projects\17898 - SUB - NTH Enoch Hill\040 Drawings\2020 Variation\17898-WOOD-XX-02-DR-2-0034.indd Originator: wis03



Photomontage

View flat at a comfortable arm's length

OS reference:	E257 336, N614 528	Horizontal field of view:	53.5° (planar projection)	Camera:	Canon EOS 5D Mk2
Eye level:	283.5m AOD	Principal distance:	812.5mm	Lens:	50mm (Canon EF 50mm f/1.8)
Direction of view:	191°	Paper size:	841mm x 297mm (half A1)	Camera height:	1.5m AGL
Nearest turbine:	6,479m	Correct printed image size:	820 x 260mm	Date and time:	20/03/2020 11:05



Client  
Enoch Hill Wind Farm Variation Application  
EIA Report

**Figure V9.31d**  
**Viewpoint 5:**  
**Highpoint north of site (near Auchinross)**

May 2020



H:\Projects\17898 - SUB - WITH Enoch Hill\0400 Drawings\2020 Variation\17898-WOOD-XX-02-DR-2-0034.indd Originator: wis03



**Photomontage**

Note: This 90 degree FoV photomontage is produced in addition to the SNH 'Visual Representation of Wind Farms' guidance and illustrates the Variation Development in its landscape setting.

OS reference:	E257 336, N614 528	Horizontal field of view:	90° (cylindrical projection)	Camera:	Canon EOS 5D Mk2
Eye level:	283.5m AOD	Principal distance:	522mm	Lens:	50mm (Canon EF 50mm f/1.8)
Direction of view:	191°	Paper size:	841mm x 297mm (half A1)	Camera height:	1.5m AGL
Nearest turbine:	6,479m	Correct printed image size:	820 x 130mm	Date and time:	20/03/2020 11:05



Client  
Enoch Hill Wind Farm Variation Application  
EIA Report

**Figure V9.31e**  
**Viewpoint 5:**  
**Highpoint north of site (near Auchinross)**

H:\Projects\37898 - SUB - WITH Enoch Hill\0400 Drawings\2020 Variation\37898-WOOD-XX-02-DR-2-0034.indd Originator: wis03



**Photomontage**

Note: This 90 degree FoV photomontage is produced in addition to the SNH 'Visual Representation of Wind Farms' guidance and illustrates the close relationship of the Variation Development and the consented South Kyle Wind Farm

OS reference:	E257 336, N614 528	Horizontal field of view:	90° (cylindrical projection)	Camera:	Canon EOS 5D Mk2
Eye level:	283.5m AOD	Principal distance:	522mm	Lens:	50mm (Canon EF 50mm f/1.8)
Direction of view:	191°	Paper size:	841mm x 297mm (half A1)	Camera height:	1.5m AGL
Nearest turbine:	6,479m	Correct printed image size:	820 x 130mm	Date and time:	20/03/2020 11:05



Client  
Enoch Hill Wind Farm Variation Application  
EIA Report

**Figure V9.31f**  
**Viewpoint 5:**  
**Highpoint north of site (near Auchinross)**

May 2020



View flat at a comfortable arm's length