



RWE

Gaerwen Wind Farm Newsletter

Spring 2023

Introducing the Project Manager

The planning process and the race to net zero

Project timeline

Local benefits

Community fund

Shared ownership

Business opportunities

Informal consultation – feedback



A warm welcome from the Project Manager

Arfon Edwards gives an update on the Gaerwen Wind Farm proposal



Thank you for taking an interest in the Gaerwen Wind Farm proposal. In this newsletter you will find information about our plans and what to look out for over the coming year.

We have been developing the Gaerwen Wind Farm project since 2020, undertaking ecology and land surveys, wind assessments, and more, in order to determine how suitable the site is for a wind farm. At the end of last year, we undertook an informal public consultation to introduce the project to local people. I want to thank all of you who came to visit our exhibitions or responded online. The feedback you gave was very valuable.

We've also been speaking to political representatives to ensure that they are updated and can inform us about local factors that we need to take into consideration when developing the project.

We are also looking at ways in which other bodies and organisations can be shared ownership partners in the project. At our informal consultation events we were joined by Community Energy Wales who discussed what options might be available for the project to have an element of community ownership.

Later this year, we will be undertaking the formal pre-application consultation. This part of the planning process is required by law, and the feedback we receive needs to be included in our planning submission. You can find out more about the planning process below.

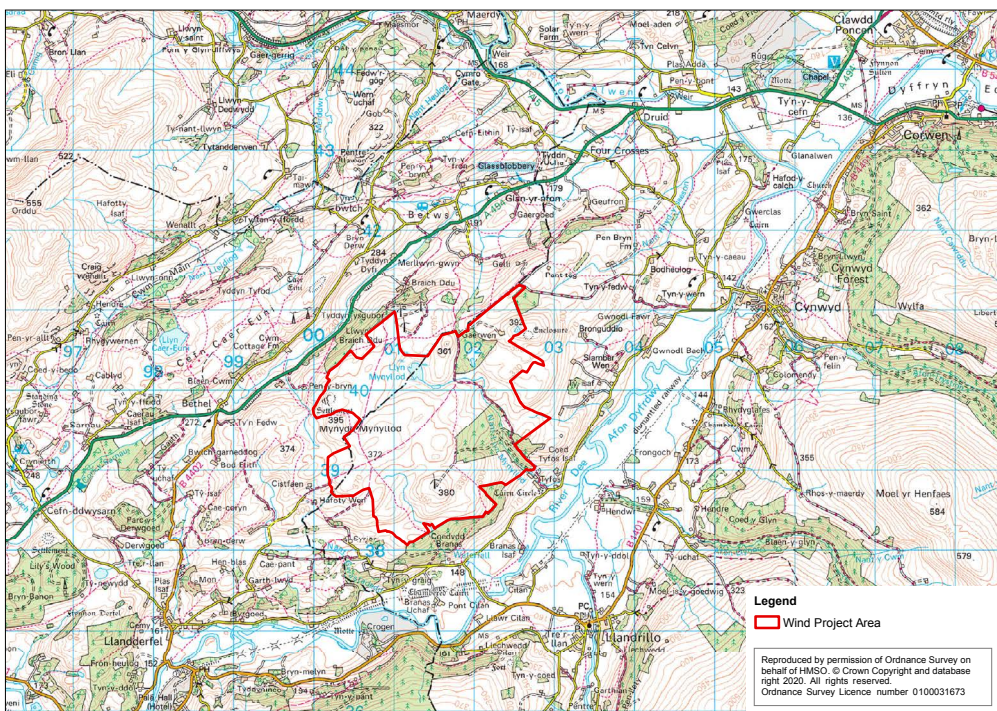
Climate change is at the forefront of our minds as we progress our plans. Many people in the community also have concerns about the impact that a warming planet will have on future generations.

Renewable energy plays a critical role in enabling us to transition away from fossil fuels which are creating the climate emergency. There is now a sense of urgency among policy makers at the global, national, and local level, who are all working to tackle climate change, with each and every one of us being urged to play our part.

I hope that you find this newsletter informative. If you have any questions, please don't hesitate to contact me. I'll be in touch again to let you know when the pre-application consultation is due to take place and to explain how you can get involved.



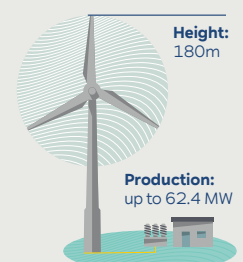
Arfon Edwards, Gaerwen Development Project Manager



The proposed Gaerwen Wind Farm site is south-west of Corwen and north-east of Bala.

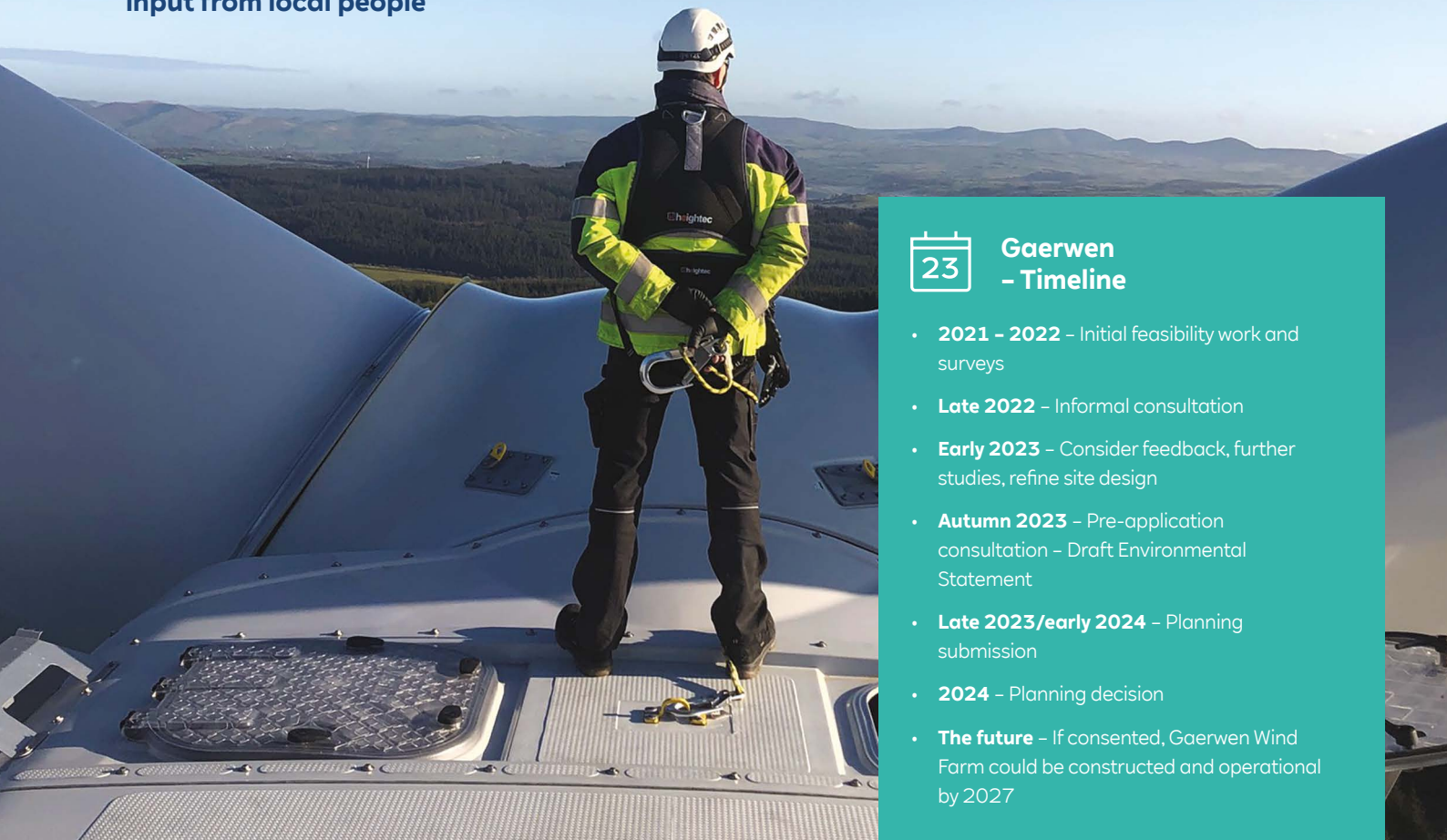
Gaerwen Wind Farm – at a glance

- Up to 13 turbines
- Each turbine will be up to 180m in height (to blade tip)
- Generating circa 62.4 MW
- Solar and battery potential being explored
- Shared ownership
- Community benefit fund



The planning process and the race to net zero

Decision by Welsh Government with input from local people



Gaerwen - Timeline

- **2021 - 2022** – Initial feasibility work and surveys
- **Late 2022** – Informal consultation
- **Early 2023** – Consider feedback, further studies, refine site design
- **Autumn 2023** – Pre-application consultation – Draft Environmental Statement
- **Late 2023/early 2024** – Planning submission
- **2024** – Planning decision
- **The future** – If consented, Gaerwen Wind Farm could be constructed and operational by 2027

Wales is legally obliged to achieve net zero by 2050 and there are interim targets in place to keep the country on track, including that Wales should meet the equivalent of 70 percent of its electricity demand from Welsh renewable electricity sources by 2030*.

To help achieve this, the Welsh Government has policies to encourage the growth of the renewable energy industry in Wales. One of the ways that renewable energy generation is being supported is through the planning process.

The Gaerwen Wind Farm proposal is categorised as a Development of National Significance. RWE must undertake a six-week pre-application consultation on the draft Environmental Statement with members of the public, community consultees, and statutory consultees, such as Natural Resources Wales, the local authorities, and others.

A key document in the planning application, the Environmental Statement, includes details of the landscape and visual impacts, wind monitoring data, transport and access, ecology and habitats assessments, noise calculations, and much more.

Initially, the planning application is considered by a planning inspector who will undertake their own consultation and may decide to hold hearings or an inquiry. The planning inspector is guided by laws and policies that shape decisions on large scale renewable energy projects, including Welsh Government's Future Wales: the national plan 2040. The planning inspector presents their findings and recommendations to the Welsh Government Minister, who takes the final decision based on the inspector's advice.

The local authorities of Denbighshire and Gwynedd are statutory consultees and provide their own views to the planning inspector. Community and town councils and local ward councillors are community consultees.

As part of the proposed site is on common land, a separate permission to develop on common land is also required, which will be applied for at the same time.

*The Welsh Government is currently consulting on a target of meeting the equivalent of 100 percent of its electricity demand from Welsh renewable electricity sources by 2035.

Local benefits

Community fund for local good causes

In the last decade, wind farms operated by RWE in Wales have contributed over £10 million to local communities. If Gaerwen Wind Farm gains planning consent, we will work closely with the community to tailor a benefits package that has local people at the heart of how the fund works.

Shared ownership

The Welsh Government has said that it wants all new energy projects to have an element of shared ownership, and that's just what RWE will offer on the Gaerwen project. There are different models for shared ownership. Here are examples of our existing offer:

Pen March Wind Farm

At Pen March Wind Farm, located north of Rhymney straddling the borders of both Caerphilly and Merthyr Tydfil County Borough Council, RWE and two local Councils have been discussing shared ownership, conversations supported by the Welsh Government Energy Services, and investment advisors, Abundance. As a result of efforts from all sides, RWE has signed a Memorandum of Understanding with Caerphilly, with talks also ongoing with Merthyr Tydfil. The agreements reached would give the Councils the option to invest and receive a share of any profits made from the wind farm, which could be spent on local public services.

Alwen Wind Farm

At our Alwen Wind Farm, located adjacent to Llyn Brenig and the Alwen Reservoir, we've been working with Community Energy Wales (CEW) to develop a shared ownership offer. In this example, CEW is setting up a co-operative, which will be able to invest up to 15 per cent of the capital costs of building the wind farm, using funds raised from local people who wish to invest. This will enable the community to share in the revenues generated by the operation of the wind farm itself.

Calling local businesses – come and join us at our supplier event in May

Opportunities for businesses and contractors

If the project gets the go-ahead, local companies will be encouraged to bid for contracts to help develop and construct the site. There are all sorts of skills, goods and services that are required to build a wind farm, and RWE would like to work with local businesses on the project.

On 18 May 2023, we are partnering with our sister projects – Alwen Forest Wind Farm and the Awel y Môr Offshore Wind Farm – to showcase the sorts of contracts that will be available. If you're interested in joining us at Venue Cymru, Llandudno to hear more about the opportunities, please email the Gaerwen team.

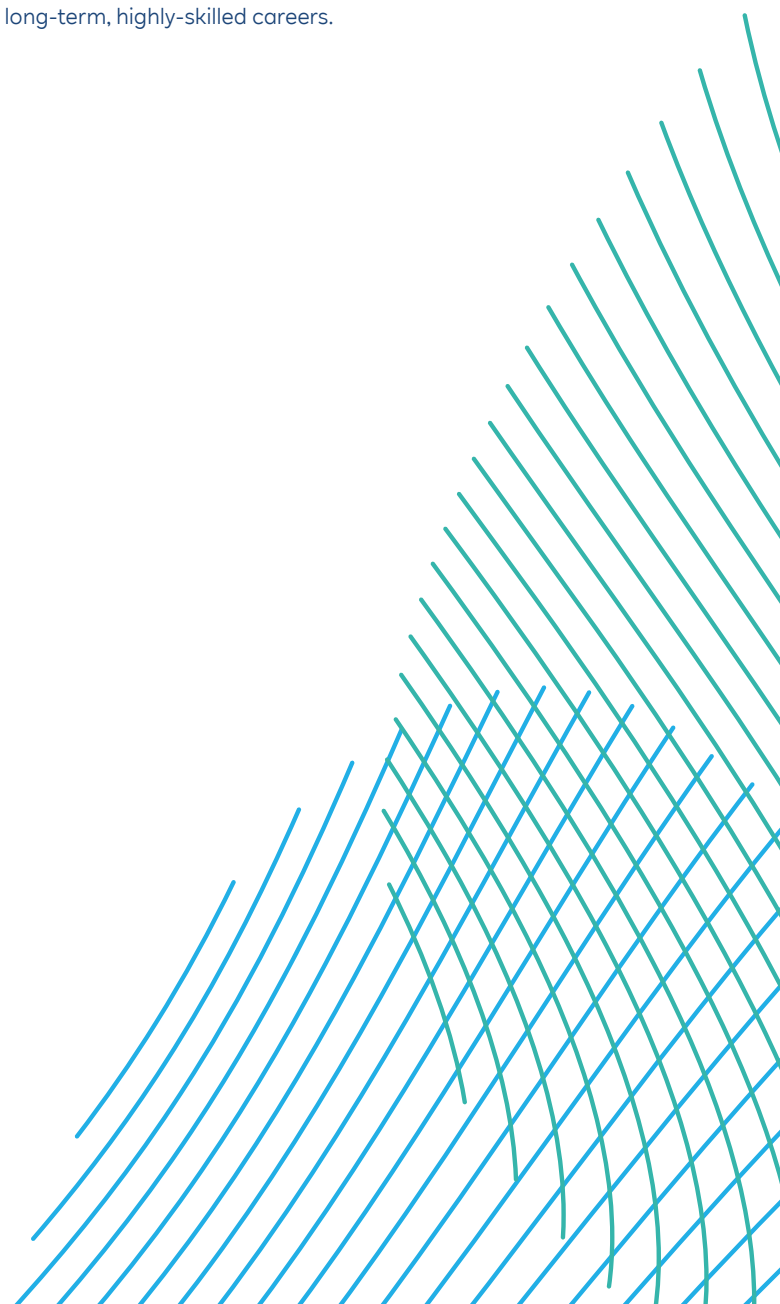
RWE Renewables in Wales

RWE in Wales

RWE produces around 15 per cent of the UK's electricity. We are the largest renewables investor in Wales, operating almost 1 GW of projects across onshore and offshore wind farms plus hydroelectric sites. We employ over 300 people across our Welsh sites, which include Baglan, Dolgarrog, Pembroke, and Port of Mostyn. Gaerwen Wind Farm is one of a pipeline of new renewable energy projects in development across Wales in offshore, onshore, battery storage, solar and hydrogen.

Over the last decade, together with partners, RWE has invested over £3 billion to deliver projects in Wales.

We also operate a successful apprenticeship scheme in partnership with Grŵp Llandrillo Menai in north Wales, which trains our wind turbine technicians for the whole of the UK for both onshore and offshore wind farms. To date, this has trained over 30 individuals with almost all progressing into long-term, highly-skilled careers.





Feedback from the informal consultation

Late last year, RWE undertook an initial three-week informal consultation online and at events in Corwen, Llandderfel and Llandrillo, to share information about the project and gather initial views from local communities. The RWE team were joined at the events by Community Energy Wales who provided information on community ownership, and by Conwy Voluntary Services Council who discussed how RWE community funds have benefited the region.

Those attending the events in person were invited to read about the proposal on information boards, look at some early wireframes (of the turbines marked on the landscape), speak to RWE staff, complete a feedback form and take away an information booklet. The consultation information is still available to view online at www.rwe.com/gaerwen

Feedback – snapshot of results

In total, 123 feedback forms were completed, either online or in person at the events. RWE asked a number of direct questions, here are the results from some of these:

Are you supportive of the Gaerwen Wind Farm proposal?

- Yes - 11%
- No - 77%
- Unsure - 12%

Do you support the development of onshore wind farms?

- Yes - 25%
- No - 59%
- Unsure - 16%

Do you support the development of solar?

- Yes - 69%
- No - 6%
- Unsure - 25%

In response to the question 'I recognise that there is a climate emergency that needs addressing'.

- 81% agreed
- 7% disagreed
- 12% were unsure

There was a lot of valuable feedback about the proposal. Some people said that they thought a wind farm at Gaerwen would make a valuable contribution to tackling climate change, that the community benefit fund would be useful, and welcomed the potential jobs and supply chain opportunities. Of those who were opposed, the most frequently cited concern was the impact that the turbines could have on views of the landscape. Other concerns included traffic disruption, potential for noise when the turbines are operational, and whether tourism would be affected.

The majority of people who responded were older with 69% indicating that they were 50+.

RWE will reflect on the comments received and decide what can be done to address some of the concerns raised. It is important that RWE reaches as many people as possible during the coming months to share the plans for a wind farm at Gaerwen and hear ideas about how the project can be developed as sensitively as possible. The company is especially keen to hear from younger people. If you have thoughts on organisations or groups that might like to learn more, please let us know.



How to contact us

Keep in touch and let us have your views

✉ gaerwen@rwe.com

🌐 www.rwe.com/gaerwen

☎ **01490 340067**



RWE is one of the world's leading renewable energy companies, and the #1 renewable generator in Wales

>3 GW*

of power generation including the UK's first large-scale offshore wind farm North Hoyle**

In operation



3 Offshore wind farms



5 Hydro power stations



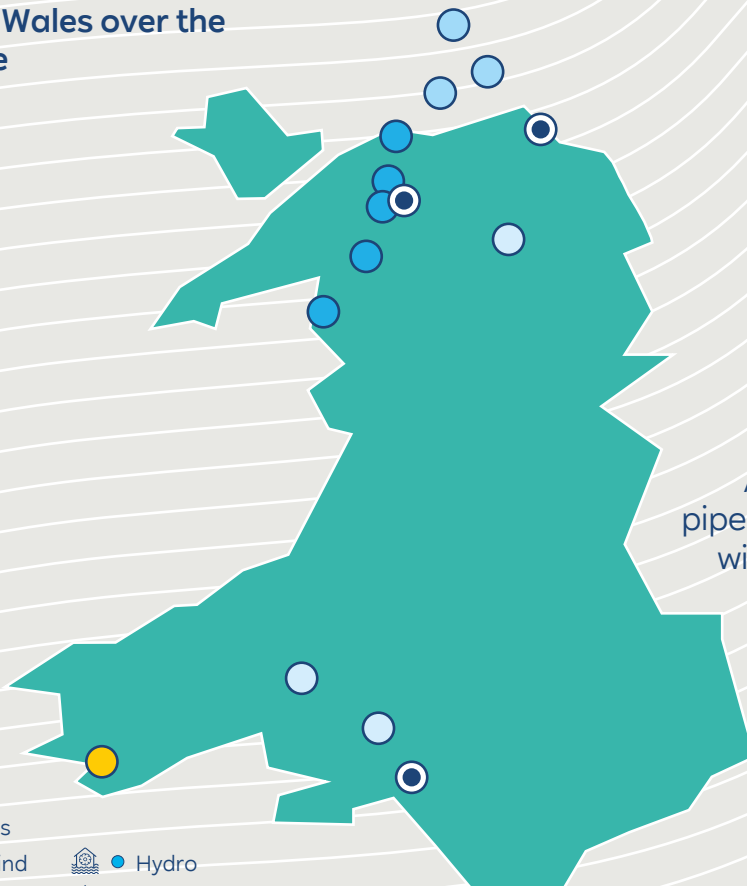
3 Onshore wind farms



1 Gas fired power station

£3bn

invested in Wales over the last decade



- Main offices
- Offshore wind
- Onshore wind
- Hydro
- Gas

RWE in Wales

Largest electricity generator with involvement in almost 1 GW of renewable energy – at the forefront of a low carbon future.

Our unique Pembroke Net Zero Centre is combining hydrogen, floating wind, battery storage, CCS and solar to drive the wider decarbonisation of South Wales.

An ambitious project development pipeline, comprising ~600MW onshore wind, Awel Y Môr offshore wind farm - Wales' largest renewable energy investment this decade - and ambitions for GW-scale Celtic Sea floating wind.

*RWE pro rata share 2,652 MW including 50% share of Gwynt y Môr (576MW) and 50% share of Rhyl Flats (90MW)

**Operated but not owned by RWE (60MW)



Annual community funding will amount to over

£ 2.4 million

Decisions made by local people for local communities



Pembroke Power Station

£ 20 million

Gwynt y Môr offshore wind farm

£ 8 million

annual contributions to local economy