

[Our impacts](#)

[Case studies](#)



# RWE

# Our community funds



# funds



Annual report 2024



# A community-driven journey to sustainable growth

**Over their lifetime the renewable projects we are operating and building are dedicated to investing more than £160 million into community-driven projects, helping to build lasting legacies and work towards the UK's transition to net zero.**

At RWE, we believe that true transformation begins at the heart of local communities. We're not just invested in renewable energy; we're invested in people and the sustainable futures of communities that host our renewable energy projects across the UK.

Our commitment goes beyond the boundaries of flexible financial investment; nurturing growth, resilience, and sustainability.

Our funds are all about helping communities to achieve their plans through the delivery of flexible funding that can meet the unique needs of their local area. At RWE, our approach is holistic, inclusive, and centred on the belief that when communities thrive, we all thrive.

Join us in our story to see how these funds are powering positive change, empowering local projects, enhancing public buildings and spaces, and fostering vibrant connections that bring local people together for a brighter future for everyone living close to our projects.



**In 2024, projects operated by RWE invested more than**

**£6.1m**

**into community funds, which helped to create:**

**937**

Volunteering opportunities

**1789**

Education & training opportunities

**£7.5m**

Match funding

**47**

Jobs

**122**

Safeguarding of jobs



# Tom Glover

RWE UK Country Chair



**RWE is dedicated to delivering clean energy projects across the UK, and one of the highlights of the year for me is reflecting on how these infrastructure projects are benefiting local people.**

We strive to embed the community at the core of our operations by empowering local initiatives and fostering sustainable development, and the outcomes are truly inspiring.

This year, I'm thrilled to announce our total community benefit fund contributions have reached over £44.7 million. None of this would be possible without the dedication of the wonderful local volunteers who make up our community panels across the UK and lead fund decision making, bringing unparalleled insights and passion to deliver meaningful change.

Empowering local decision-making isn't just a strategy; it's a commitment to recognising and valuing the expertise that comes from lived experience. We know that local people are intimately aware of the challenges and intricacies of their community, allowing them to make funding decisions in a way that directly addresses the most pressing issues.

A highlight for me this year was the opportunity to join with our newly appointed community investment stewards, the Norfolk Community Foundation at the University of East Anglia Enterprise Centre to launch the discovery round of our Norfolk Offshore Wind Zone Community Fund.

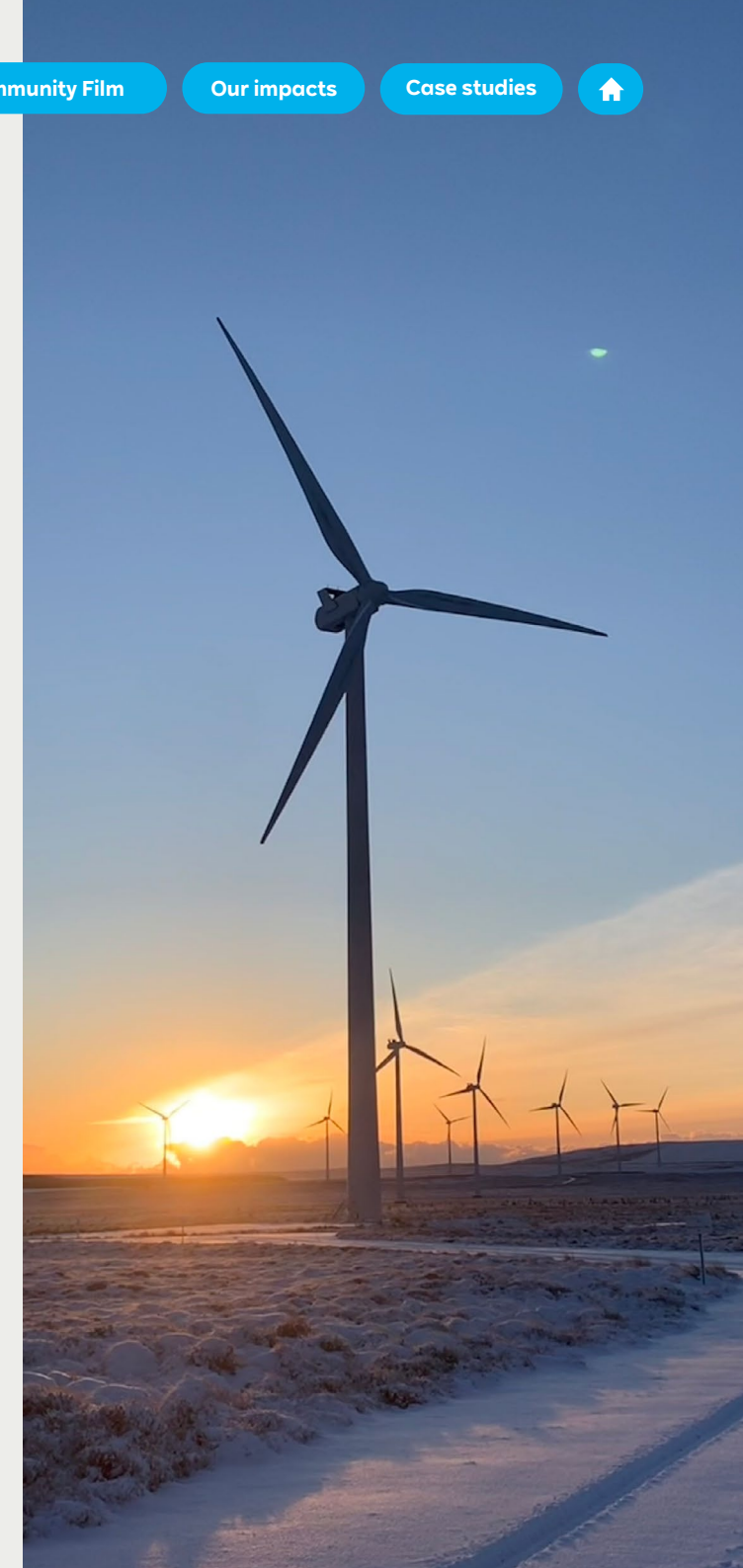
The culmination of years of engagement with local people, groups and organisations, this was a huge step forward in the delivery of an exciting fund which aims to create places where people want to live and thrive now and in the future.

We established our first solar farm community funds which will empower a diverse range of local projects with lasting impacts. Initiatives like installing rooftop solar panels and energy efficiency measures in schools and community buildings with the goal of reducing costs and carbon emissions to foster a more sustainable future for the communities closest to our solar projects.

Finally, it was a year of celebration as we paid tribute to the hundreds of local people and groups who make amazing things happen with funding from our renewable energy projects. To highlight our commitment to best practices and innovation we launched our Future Bright Recognition Award. The inaugural award was presented to Abergele Community Action in honour of their outstanding innovation and community spirit, setting a benchmark for others to aspire to.

Thank you to everyone who has helped make all of this possible. I look forward to another year of not only powering homes, but also the future of our communities.

*Tom*





# How our funding works

Our approach to community funding explained



## It's all about you

Meeting the needs of the local area is what we're here for.



## Every community is different

We tailor our funds to meet the unique and changing needs of communities and we take a bespoke approach for every allocation.



## Local knowledge is best

We want communities to be at the heart of decision-making: we recruit local panels with the knowledge to call the shots on what we fund and how, and our funds are usually managed locally by professional grant making organisations.



## We adapt

Our funds can respond rapidly to emergencies and unforeseen challenges – so we're there to help communities through unexpected events such as floods, the pandemic, or the cost-of-living crisis.



## We flex

Our adaptable approach means we can support projects through grants, loans or even by investing.



## We listen

We take a flexible approach and listen to consultation responses to find out how the area surrounding the site is used for living, working and recreation.



## Ensuring legal compliance

Funds are secured through legal agreements for the future and to mandate good governance.



## We keep it simple

So, the application process is easy, straight forward and with as little bureaucracy as possible!



## We're here for the long-haul

We encourage communities to plan for the future, to support sustainable development and build legacy for future generations.



## Global goals

We measure our funds against the UN Sustainable Development Goals (SDGs) which are a universal call to action to end poverty, protect the planet and improve the lives and prospects of everyone, everywhere. Adopted by all UN Member States in 2015.



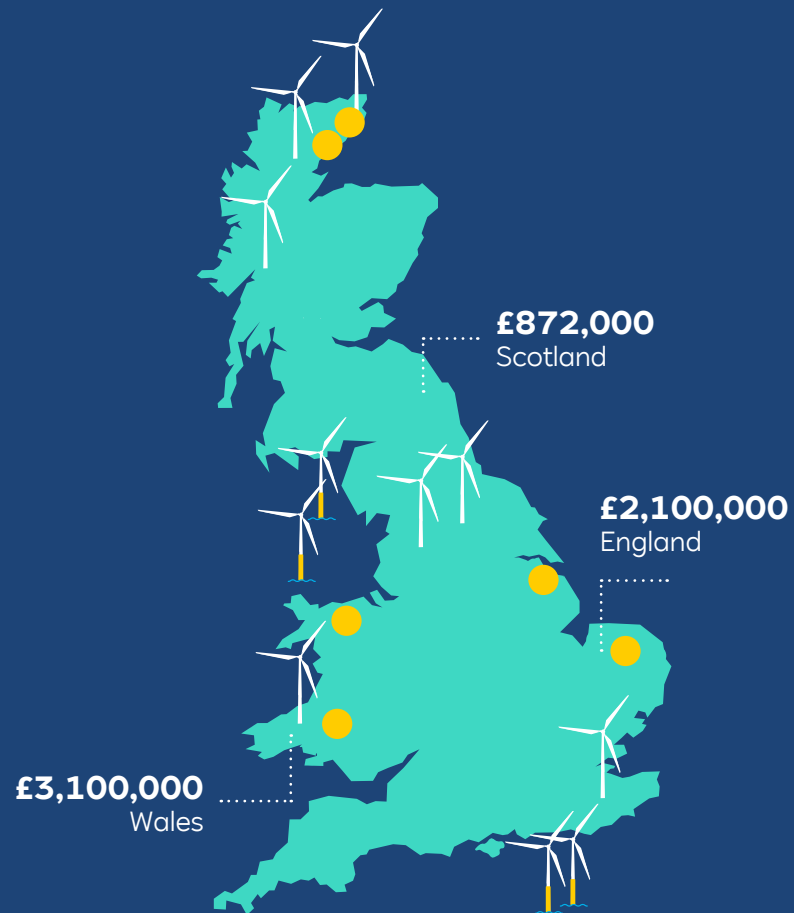
## And this is just the beginning

We aim to future-proof benefits by securing and sign-posting match funding and curating partnerships with other funders.

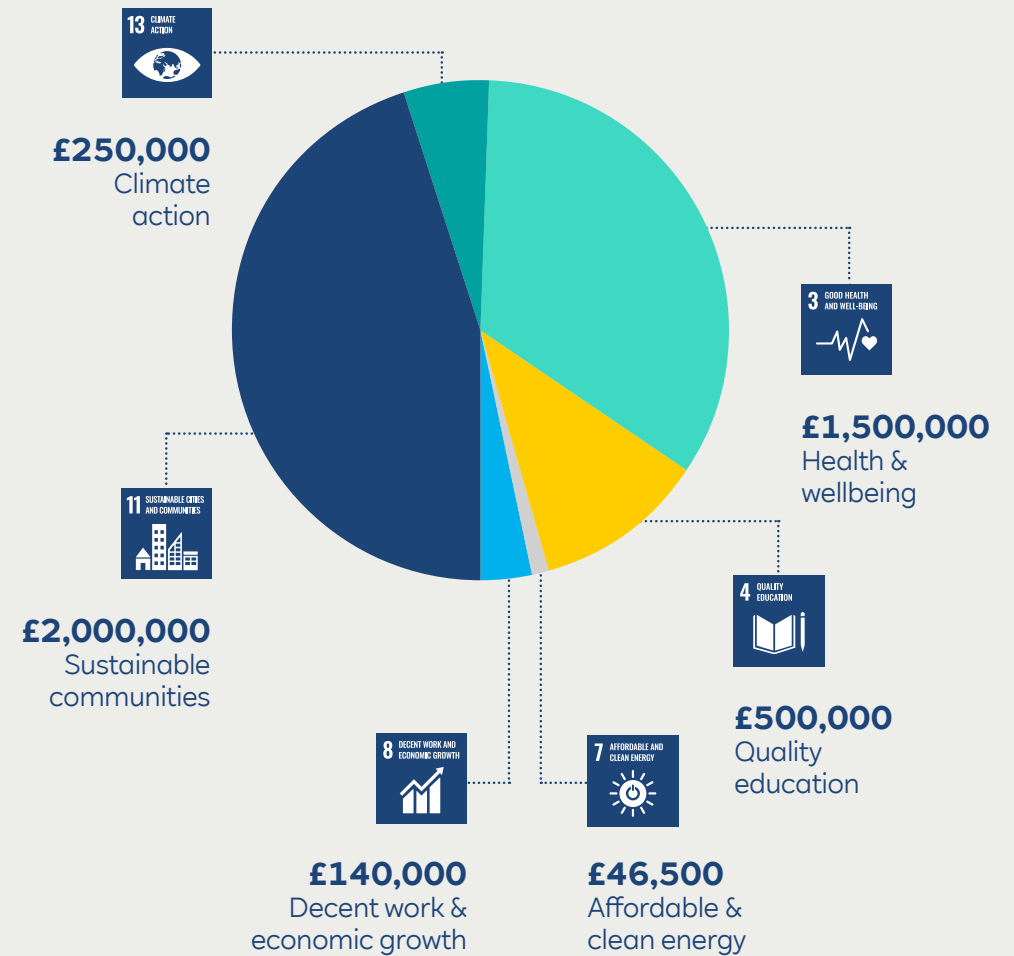


# Our year in a snapshot

Click on the yellow location dots to read our case studies:



## 2024 grants made to support UN Sustainable Development Goals:



To find out more about the UN sustainable development goals visit: [sdgs.un.org/goals](https://sdgs.un.org/goals)

📍 Camster Wind Farm Community Fund

## Retaining vital rural services

Watten Shop

**In the heart of Watten, a small rural village in Scotland, the closure of the local shop stirred deep concerns. This shop was more than just a place to purchase essentials—it was a lifeline, a spot where neighbours shared stories and smiles.**

Its absence threatened to heighten feelings of isolation, especially among the elderly and vulnerable, and chipped away at the village's sense of identity. Faced with this reality, the Watten Shop Group emerged. This volunteer-led initiative set out to not only save the shop but transform it into a community-owned hub that would sustain the village economically, socially, and environmentally.

The group burst into action, weaving together the fabric of community spirit to launch a share offer, raising funds essential for purchasing and rejuvenating the beloved shop. The nearby RWE Camster Wind Farm's community fund support of over £90,000, provided the much-needed thrust, covering legal costs, wages, stock, and enabling a smooth lease transition while orchestrating the purchase.

Aided by the passionate local Community Development Officer, also funded by the wind farm, this initiative bore fruit. The newly transformed shop is not just a marketplace, it has prioritised local produce, supporting nearby farmers and reducing food miles. By offering jobs, it became a foundational space for young residents, sparking career paths and experience. Plans for a cosy café area in the future will create a gathering spot, building social connections and easing isolation.

The Watten Shop Group exemplifies the power of grassroots initiatives to build community wealth. By saving and revitalising the village shop, the group created a sustainable, inclusive, and thriving community hub. Their story is a testament to what's possible when communities unite around a shared vision, blending innovation and determination to create lasting impact.



Watten Community Film

Our impacts

Case studies



**“The first grant to lease the shop during the purchase process meant the Watten community didn’t risk losing it to closure. We’re very grateful to the RWE Camster Wind Farm Fund for this opportunity.”**

Watten Shop Group’s Treasurer



## Helping local business to develop and grow

Snowdonia Glamping Holidays

**Nestled within the breathtaking landscapes of Snowdonia National Park, Snowdonia Glamping Holidays stands as a beacon of sustainability and luxury.**

As one of the pioneering glamping experiences in North Wales, this business is not just about offering an unforgettable stay, it's about nurturing a thriving and sustainable rural community. They are dedicated to sustainability using innovative solutions like ground source heat pumps, guest-accessible EV chargers, and an on-site bio-sewerage treatment plant.

A Clocaenog Forest Wind Farm business grant of over £18,000 was matched with the business's own funds and has facilitated the installation of solar panels, inverter battery storage, and the necessary infrastructure enhancements. This investment propels Snowdonia Glamping Holidays toward greater energy independence and reduced carbon emissions, serving as an example for guests on the benefits of eco-friendly practices, whilst strengthening the tourist accommodation offer in the area.

By offering business grants the Clocaenog Forest Wind Farm Community Panel has recognised that small businesses are the cornerstone of rural development, they drive economic growth, create jobs, and foster community resilience. When you support a local business they invest locally, they circulate money within the community, supporting local suppliers and services helping rural areas to thrive in a rapidly changing economic landscape, ensuring long-term prosperity and stability.





## A little goes a long way

Angle for the Community

**Founded in 2022, Angle for the Community is a grass roots Community Interest Company, aiming to harness the therapeutic and mental health benefits of angling and finding a reconnection with nature.**

Taking the opportunity to regenerate an under-used fishing pond, founders and qualified coaches, Ken and Dave welcome an extensive variety of groups including the Scouts, an Autism group and referrals from the NHS. The overall aim is to make angling accessible for all especially for young people and those of all ages who struggle with mental health and addiction issues.

Just a small grant of £800 from the RWE Humber Gateway Wind Farm Community Fund has enabled Angle for the Community to buy essential equipment such as waterproofs, ramps and walkie-talkies meaning sessions are more accessible and can be offered to more young people and throughout the winter months.

Angle for the Community are enhancing their mentoring programme to teach young people the art of angling, enabling them to pass on this joy and knowledge by earning their own coaching certificate.

[Angle Community Film](#)

[Our impacts](#)

[Case studies](#)



**“It seems odd to be thinking that fishing can help people with autism and the difficulties surrounding that. But it’s absolutely brilliant because people are parallel on the pegs. You don’t have to make eye contact, you don’t have to make small talk, you can just be side by side with other people just focussing on the fishing.”**

Angle for the Community participant



Caithness Wind Farm Education and Training Fund

## Local decision-making driving regional funding delivery

**The Caithness Wind Farms Education and Training Fund launched in 2022 with a decision to invest an initial £30,000 by the RWE Camster Wind Farm Fund Community Panel.**

In subsequent years a total of £75,000 has been made available to the wider Caithness regional area, all driven by local decision making.

This innovative bursary program provides financial support to residents aged 16 and over, helping them access education and training opportunities to boost their employability or embark on new career paths. This spreads this benefit to people living across Caithness who were not already eligible to education and training funds from other wind farms.

The fund covers a wide range of costs, including course fees, travel, childcare, study aids, technical equipment, and even accommodation. Designed to address the unique needs of Caithness, it prioritises applicants pursuing careers in vital sectors like health, education, tourism, renewable energy, engineering, and more. By focusing on industries critical to the region's economy, the fund creates a sustainable pipeline of skilled professionals while fostering local development.

Recipients can use the bursaries for diverse opportunities, from short vocational courses to undergraduate degrees and specialist certifications. First-time applicants can access up to £750, while second-time applicants can receive up to £500, ensuring broad accessibility while encouraging impactful investments in personal growth.

Administered by Foundation Scotland, this initiative reflects the power of community-driven decision making to inspire individuals to realise their potential and grasp opportunities to build a future in their local area whilst contributing to the local economy.


[Caithness Community Film](#)
[Our impacts](#)
[Case studies](#)


**“While community funds in the past have traditionally focused on the areas closest to the turbines, we believe adapting to the wider needs of the Caithness community reflects a more united, adaptable and forward-thinking approach.”**

Linda Malik Bremner, Camster Wind Farm Panel Member



 Mynydd y Gwair Wind Farm Community Fund[Our impacts](#)[Case studies](#)

## Improving community assets

Llangyfelach Scout Group

**A grant from the RWE Mynydd y Gwair Onshore Wind Farm Fund in Wales has enabled the 6th Llangyfelach Scouts to secure and enhance their outdoor space, marking a significant milestone in the ongoing development of their facilities.**

The scout hall, originally built in the 1960s, had fallen into disrepair, and extensive efforts over recent years have transformed it into a modern space for scouts and the local community alike. With £15,000 of wind farm funding, the group has now been able to turn its attention to the surrounding land, which, until recently, was unsecured and had become unsafe due to anti-social behaviour.

The new secure perimeter fence and access gates, along with the safe clearing of the grounds, have unlocked a wealth of outdoor opportunities for the scouts. Now, they can fully utilise the area for play, outdoor learning, and nature exploration, creating an inspiring environment for the wider community as well. This initial investment in security has laid the foundation for future outdoor projects, with plans already in place for raised beds and a polytunnel to support the next growing season. Looking ahead, the group envisions establishing a scout campsite on-site, which will help generate income and offer additional opportunities for sustainable growth.

**“This project has opened the door to outdoor activities in a safe space, where Beavers, Cubs, and Scouts can explore, learn about growing flowers and vegetables, and engage with local wildlife and biodiversity.”**

Michael Horst, 6th Llangyfelach Scout Group



## Listening to local people to shape the future of offshore wind community benefits

**RWE's offshore wind farm projects in Norfolk are putting local communities in the driver's seat, ensuring they directly benefit from the region's renewable energy future.**

The three offshore wind development projects have the potential to create new jobs during construction and operation as well as support local and regional skills development programmes and local supply chain activity.

Over the past few years, the projects have been listening to local people to help shape a community fund fit for the next 25 years. The fund aims to empower communities to grow greener by supporting the projects and places that build nature connection and climate resilience.

### The journey so far has included:

**Phase 1:** Understanding how Norfolk residents feel about climate change and offshore wind. The aim was to gather a broad outline of commonly held views that connect people in Norfolk.

**Phase 2:** Introducing the fund and gathering ideas for community initiatives.

**Phase 3:** Meeting residents in several locations along the length of the cable route to focus on the areas they had highlighted in phase 2 and to begin developing ideas the fund could support.

**Phase 4:** Appointing an independent fund administrator through an open tender process.

**Phase 5:** Launching the discovery round of the fund and recruiting a local decision-making panel that is representative of the diverse communities the fund will benefit.

With the Norfolk Community Foundation appointed as the community investment steward, the initial discovery round of funding was launched, focussing on the communities closest to the onshore infrastructure. Nature and green spaces, community hubs and community transport projects were all eligible to apply. Future funding will expand to include the wider Norfolk County area.



**“The community panel, made up of local people, lets us listen, understand challenges and opportunities, and support projects that matter. It’s fulfilling to help fund projects which build stronger, better-connected communities.”**

Rex Warner MBE, Decision-making panel member

# Katy Woodington

Senior Community Investment Manager (UK & Ireland)



**This year's community fund report fills me with pride and optimism for the future. Our efforts, more aligned than ever with the UN Sustainable Development Goals, are paving the way for a positive future for both people and the planet.**

These goals not only guide our current projects but are also planting the seeds for a lasting, sustainable legacy for future generations.

We've collaborated with industry, government, and community leaders to support consultation on the delivery of community benefit from net zero energy infrastructure and the development of best practice guidelines for the delivery of community benefits. We have consistently supported creating straightforward guidelines so communities can easily understand how they can benefit from the projects they host. We are steadfast in championing grassroots approaches, putting communities at the heart of how funding is delivered, guiding the decisions and reaping the rewards.

A hot topic this year has been the distribution of community benefits at local and regional levels. I was pleased to see our Camster Community Fund Panel allocate investment considering both these levels, developing a locally tailored solution. From years of listening to communities we understand in some circumstances and depending on scale of funds, there is potential to invest some funds into a wider area.

Our view is that people living closest to those projects are still uniquely placed, with the right support, to tailor solutions for their area and their funding.

RWE have a long history of working in partnership with other developers. Looking forward we will explore opportunities for further collaboration with developers and the wider funding community as well as innovative approaches to deliver this flexible funding where there are benefits for local communities to do so. Last year, RWE funds alone helped to unlock an additional £7.5 million in match funding. As our industry's collective investment, often in rural areas, grows, so does the potential to support transformative change, addressing unique local challenges.

To close, let me assure you that as we widen our lens to explore regional and legacy impacts, our focus on grassroots initiatives remains as sharp as ever. A shining example is "Angling in the Community," a small project highlighting how passionate local efforts can take a very small investment to drive significant health and well-being benefits. Volunteer groups' creativity and resolve are pivotal, and while we provide financial support, the communities are the true change-makers.

*Katy*

Our impacts

Case studies





# Our community voices



What our funds from renewable energy projects mean to our community panels in one word

## Decisions made by local people

Rosehall



### Supportive

Knabbs Ridge

### Needed

Lindhurst



### Appreciated

Bad á Cheò

### Varied

Gwynt y Môr



### Engaging

Triton Knoll

### Impactful

Triton Knoll



### Necessary

Triton Knoll

Legacy  
Clocaenog Forest

### Invaluable

Humber Gateway



### Enabling

Humber Gateway

### Lifeline

Rhyl Flats

### Encouraging

Camster



### Substantial

Gwynt y Môr

### Positive

Clocaenog Forest

### Thriving

Mynydd y Gwair

### Amazing

Gwynt y Môr



### Motivational

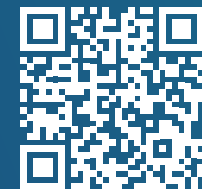
Triton Knoll

### Impressive

Triton Knoll

### Transformative

Clocaenog Forest



Find out more about our projects:  
[uk.rwe.com/in-your-community](https://uk.rwe.com/in-your-community)