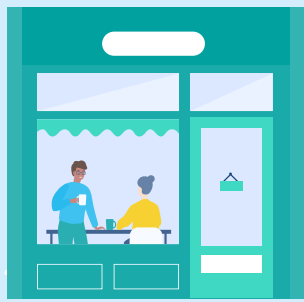
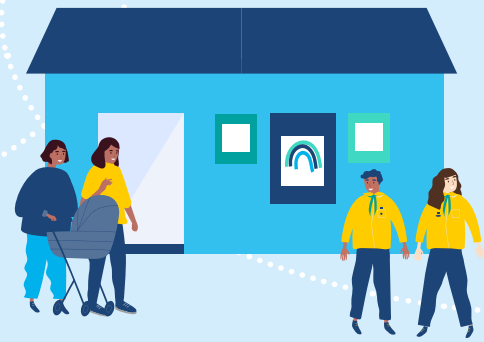


# RWE

**Transformative**  
Clocaenog Onshore  
Wind Farm



**Lasting Impact**  
Rampion Offshore  
Wind Farm



# Funding our communities

**Adaptable**  
Humber Gateway  
Offshore Wind Farm



# Our 2025 impact overview

Welcome to our 2025 annual report.

Over their lifetime the renewable projects we are operating and building are dedicated to investing more than £176 million into community-driven projects, helping to build lasting legacies and work towards the UK's transition to net zero.

**£5.7m +**

was invested into community funds in 2025 by RWE operated projects, helping create:

**3895**

Volunteering opportunities

**4563**

Education & training opportunities

**54**

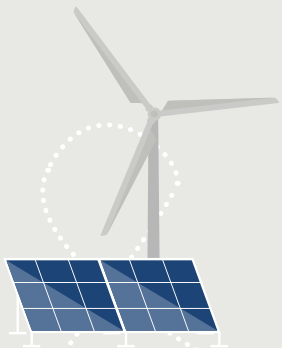
Jobs

**110**

Jobs safeguarded

**£5m**

Match funding



# Tom Glover

RWE UK Country Chair



**Each year, our Community Fund Annual Report is a powerful reminder of why this work matters. For over 25 years, RWE has worked alongside communities closest to our renewable energy projects, supporting locally led decisions and investing in what matters most to the people who live there.**

That commitment was brought to life at our Community Benefit Showcase in Westminster, where MPs, panel members, fund administrators and funded organisations came together to share practical insight on what community benefit funding can achieve. Hearing directly from volunteers and community leaders reinforced a simple truth: the strongest outcomes happen when decisions are shaped locally.

A standout example this year comes from the Norfolk Offshore Wind Farms Community Fund. The early Discovery phase of the fund is funding projects rooted in everyday community life from solar panels on village halls to more energy-efficient foodbanks and nature clubs for young people. Feedback from this phase will help build a fund that reflects long-term local priorities.

In Scotland, we were proud to recognise the Camster Wind Farm Community Fund Panel with our Future Bright Award. Their decision to share education and training benefits across

Caithness shows how community-led funding can unlock opportunities regionally while staying grounded in local need.

Looking ahead, the consenting of Alwen Forest Wind Farm in North Wales marks an important milestone. In partnership with Community Energy Wales, it will be our first Welsh project to offer shared ownership, giving communities the opportunity of a deeper, lasting stake in the energy transition.

This year, RWE community funds helped unlock more than £5 million in match funding, enabling larger and more ambitious projects. We've also expanded our solar community funding approach in partnership with Grantscape, strengthening governance and support for local decision-making.

Finally, our congratulations to Katy Woodington, Community Investment Lead, who was awarded an MBE. Katy's leadership has played a pivotal role in investing over £176 million in communities, always guided by local voices.

Thank you to every volunteer, partner and organisation involved. Together, we are delivering clean energy and helping communities build brighter, lasting futures.

*Tom*

[Our impacts](#)

[Case studies](#)



# How our funding works

Our approach to community funding explained



## It's all about you

From co-creating fund design to helping to deliver your community plans.



## Every community is different

We tailor our funds to meet the unique and changing needs of communities and we take a bespoke approach for every allocation.



## Local knowledge is best

We want communities to be at the heart of decision-making; we recruit local panels with the knowledge to call the shots on what we fund and how, and our funds are usually managed locally by professional grant making organisations.



## We adapt

Our funds can respond rapidly to emergencies and unforeseen challenges – so we're there to help communities through unexpected events.



## We flex

Our adaptable approach means we can support projects through grants, loans or even by investing.



## We listen

We take a flexible approach and listen to consultation responses to find out how the area surrounding the site is used for living, working and recreation.



## Ensuring legal compliance

Funds are secured through legal agreements for the future and to mandate good governance.



## We keep it simple

The application process is easy, straight forward and with as little bureaucracy as possible. We encourage fund administrators to join IVAR's 'Open and Trusting' grant making movement.



## We're here for the long-haul

We encourage communities to plan for the future to support sustainable development and community wealth building, creating a legacy for future generations.



## Global goals

We measure our funds against the UN Sustainable Development Goals (SDGs) which are a universal call to action to end poverty, protect the planet and improve the lives and prospects of everyone, everywhere. Adopted by all UN Member States in 2015.



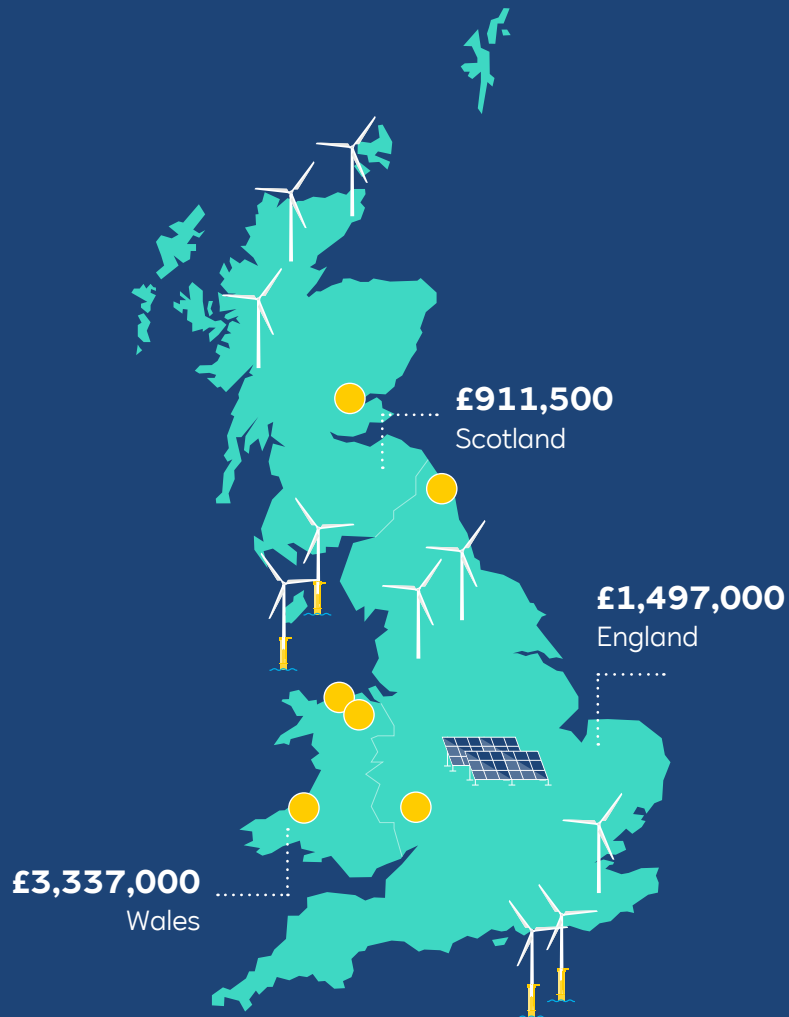
## And this is just the beginning

We aim to future-proof benefits by securing and sign-posting match funding and curating partnerships with other funders.

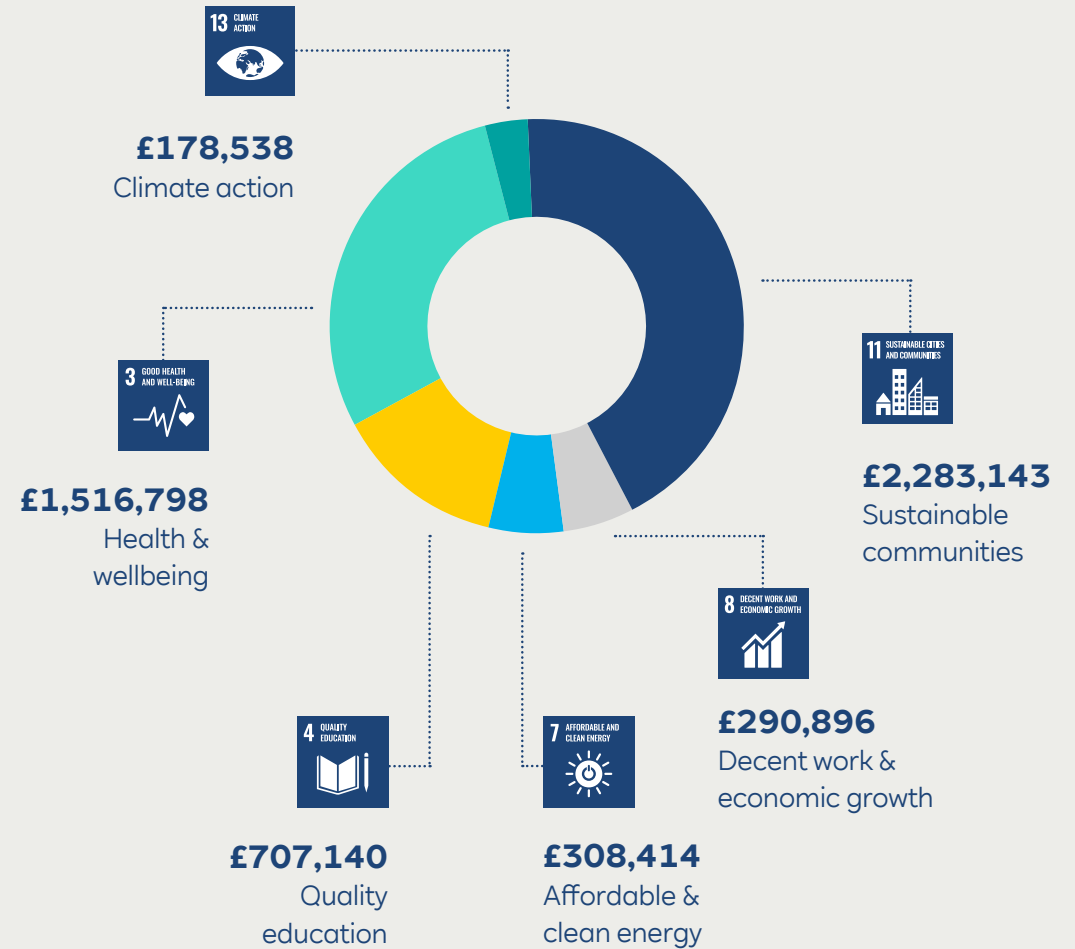


# Our year in a snapshot

Click on the yellow location dots to read our case studies:



## 2025 grants made to support UN Sustainable Development Goals:



To find out more about the UN sustainable development goals visit: [sdgs.un.org/goals](https://sdgs.un.org/goals)

Clocaenog Onshore Wind Farm Community Fund

## Securing vital rural services

South Denbighshire Partnership



**A three-year funding package from RWE'S Clocaenog Onshore Wind Farm Fund has helped secure the future of South Denbighshire Community Partnership (SDCP) - a true lifeline for people living across the rural Edeyrnion area.**

From its welcoming base at Canolfan Ni in Corwen, the Pengwern Hub in Llangollen, and smaller centres in local churches, SDCP reaches into the heart of the community, supporting people of all ages.

The funding has safeguarded essential services such as Meals on Wheels, community transport, prescription deliveries, shopping trips, and the much-loved Luncheon Clubs.

For many older residents, these are not just practical services but vital moments of connection, friendship, and care.

The grant has also allowed SDCP to continue offering opportunities that bring people together and respond directly to local needs. From hosting parent and toddler groups and craft activities to providing financial advice, mental health support, food growing, and exercise classes.

By creating trusted spaces where people feel welcomed and valued, the partnership is reducing isolation, improving health and wellbeing, whilst strengthening community spirit across rural Denbighshire.

“We are delighted to be in receipt of funding from Clocaenog Wind Farm Fund, we know the positive impact that the services we are able to provide with it has on our service users and communities. Without this support, we wouldn't be able to provide those services.”

Margaret | SDCP Chief Executive





 Brechfa Onshore Wind Farm Community Fund

## Keeping communities connected

Dolen Teifi

**Dolen Teifi is a pioneering community electric car share scheme, transforming rural mobility in West Wales where public transport falls short.**

The scheme provides over 400 registered users with affordable shared access to electric vehicles, connecting residents with vital services, training, work, and social activities.

By providing a credible alternative to private car ownership, Dolen Teifi is helping households reduce costs and carbon emissions, to help accelerate progress toward net zero. They are improving independence for disabled and vulnerable residents, supporting youth access to education, and reducing rural isolation.

The project has been shaped through strong collaboration and partnership, continually informed by lived experience. Its dedicated team of volunteer drivers keeps the service firmly rooted in the local community, while ongoing engagement ensures it remains relevant, responsive, and trusted.

RWE's Brechfa Onshore Wind Farm Fund initially supported the salary of a part-time volunteer coordinator as well as a 6-seater, accessible electric vehicle and charging points.

The subsequent success of the project has enabled Dolen Teifi to access lottery and government funding, allowing them to replicate the model in other parts of West Wales, spreading the impact even wider. They now operate with a fleet of more than 12 vehicles with hundreds of volunteer drivers.

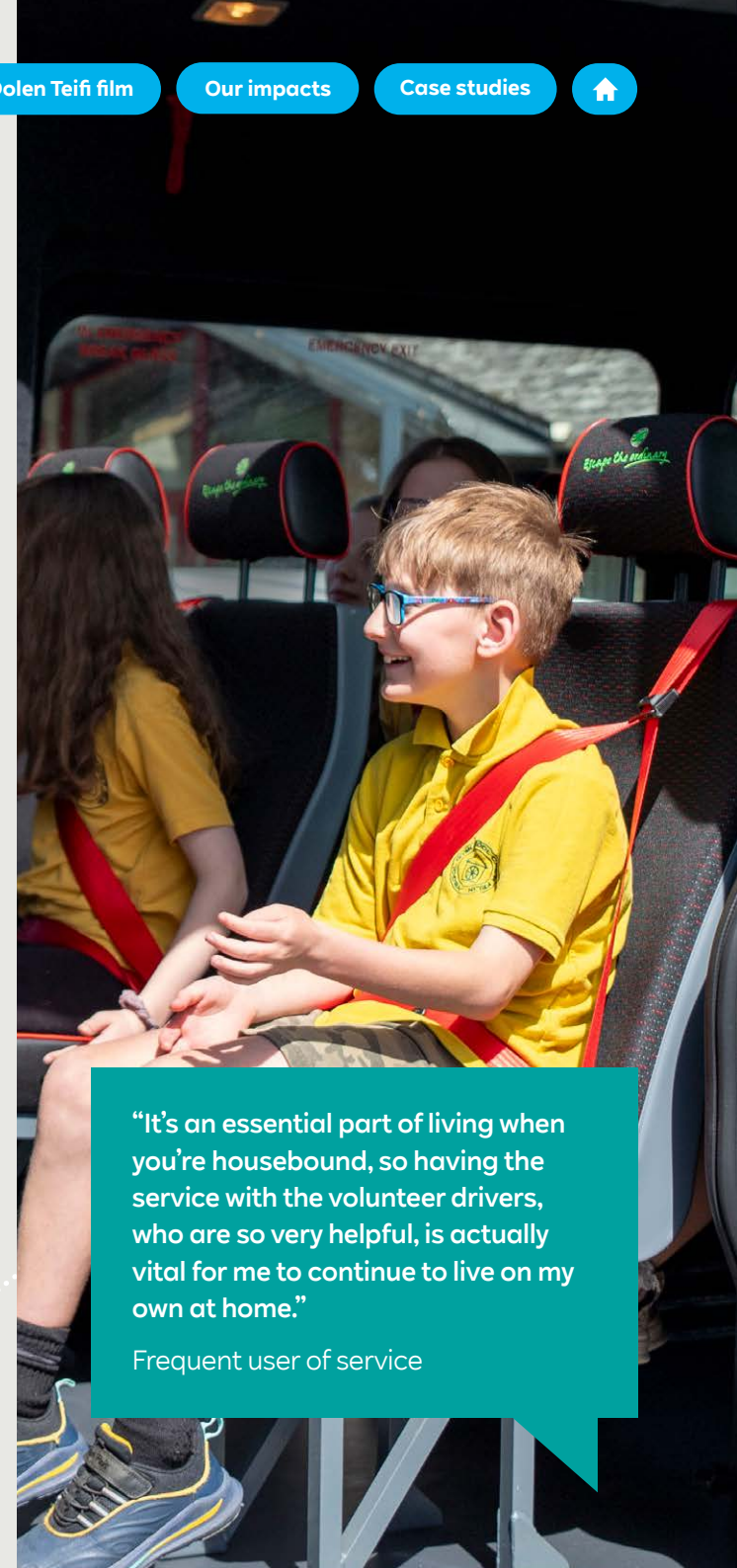
Through continuous innovation and local leadership, Dolen Teifi demonstrates that tailored, community-based solutions can drive environmental progress and social inclusion in even the most remote areas.



[Dolen Teifi film](#)

[Our impacts](#)

[Case studies](#)



**“It’s an essential part of living when you’re housebound, so having the service with the volunteer drivers, who are so very helpful, is actually vital for me to continue to live on my own at home.”**

Frequent user of service



Gwynt Y Môr Offshore Wind Farm Community Fund

## Nurturing isolated young people

1compass

**Serving some of North Wales’s most disadvantaged communities, 1compass is committed to helping young people build resilience and brighter futures through tailored support, skills development, and guidance.**

Flexible funding from the RWE operated Gwynt y Môr Wind Farm Community Fund has enabled the organisation to recruit an additional youth worker. This allows 1compass to run regular, year-round sessions for its three core youth groups, focusing on confidence, communication, positive social skills, family relationships, school attendance, and reducing anti-social behaviour.

The extra capacity also means the charity can expand its one-to-one home visit programme, supporting more young people not in education, training, or employment.

This helps bridge the gap between isolated home environments and youth group participation, creating a more connected and supported journey, led by professional youth workers.

“The centre has become a safe space for my son where he can be himself and have fun with friends whilst learning new things without the worry of not fitting in. With the centre being so close to home, it has really encouraged independence for him, getting there and back without an adult and being involved in making decisions to benefit our community. The difference in his confidence since joining has been amazing to watch.”

Steven | Parent





 Laynes Wood Solar Community Fund

## Supporting sustainable rural education

Picklenash Junior School

**A grant from the RWE Laynes Wood Solar Farm Fund has allowed Picklenash Junior School to install over 20 solar panels, reducing their energy costs and allowing them to focus on what really matters.**

Like all schools, Picklenash was struggling with tight budgets, which can limit what they can offer their students. The installation of the solar panels, and the subsequent reduction in energy costs is reducing some of that financial pressure, helping to bring stability to the school. The school can now look to redirect more time and resources into what matters most, providing their students with the best education possible.

As the only provider of primary education in Newent, Picklenash serves as a vital institution in the area. With the new panels installed, pupils can now see green technology in action, gaining hands-on insight into how it works and why it matters.

Their large outdoor forest school area is another example of how Picklenash has broadened the ways students engage with both the environment and their education, nurturing curiosity and a lasting love of learning.

The solar panels demonstrate the school's commitment to sustainability, setting a great example to their students. Not only are they benefiting financially from the panels, the reduction in CO<sub>2</sub> emissions also limits the school's carbon footprint and reliance on non-renewable energy, contributing to a cleaner, healthier environment.



**“The less we have to spend on electricity, the more money that we invest into the children and the better education we can give them.”**

Michelle Kelly | Executive Head Teacher

📍 Middlemoor Onshore Wind Farm Community Fund

# Helping vulnerable people

Williams Robertson Homes



**For over 60 years, William Robertson Homes Association (WRHA) has provided a lifeline to retired farmworkers who have dedicated their lives to the land.**

When their working years end, so does their right to stay in the estate properties they've called home for so many years. This could mean uncertainty at the most vulnerable stage of their lives. That's where WRHA steps in with a unique solution to a very local challenge.

Through multiple grants from the RWE Middlemoor Onshore Wind Farm Fund, they've been able to continue their vital work, providing subsidised housing where former farmworkers can live securely and relax, surrounded by the countryside they know and love.

For residents who would otherwise have nowhere to go, WRHA's support is genuinely life-changing. It's not just about four walls and a roof, it's about belonging.


These homes give people the chance to remain connected to the farmland and nature that shaped their lives, in communities where they feel they truly belong.

The wind farm grants have funded essential upgrades that keep daily living comfortable, such as new kitchens, efficient heating systems, and accessible bathrooms that restore independence.

**"Funding from the wind farm has been so useful in carrying out upgrades which will make such a difference to the quality of our resident's day to day lives"**  
Stephen Kerry | WRHA Secretary





 Lochelbank Onshore Wind Farm Community Fund

## Developing green community spaces

Green Shoots

**Based in the historic walled garden of Aberdalgie Church, Green Shoots is an organisation that consistently puts the community at the heart of everything it does.**

They are a community centre where people can go to build skills, make connections, or to simply experience the tranquillity of the space. With indoor and outdoor spaces available to community groups, Green Shoots has created a central space that all rural communities like Aberdalgie need.

With support from the RWE Lochelbank Onshore Wind Farm Community Fund, Green Shoots has created a new activity-based play area, allowing children to explore and enjoy the natural beauty and rich history of the site, bringing the space to life for the whole community.

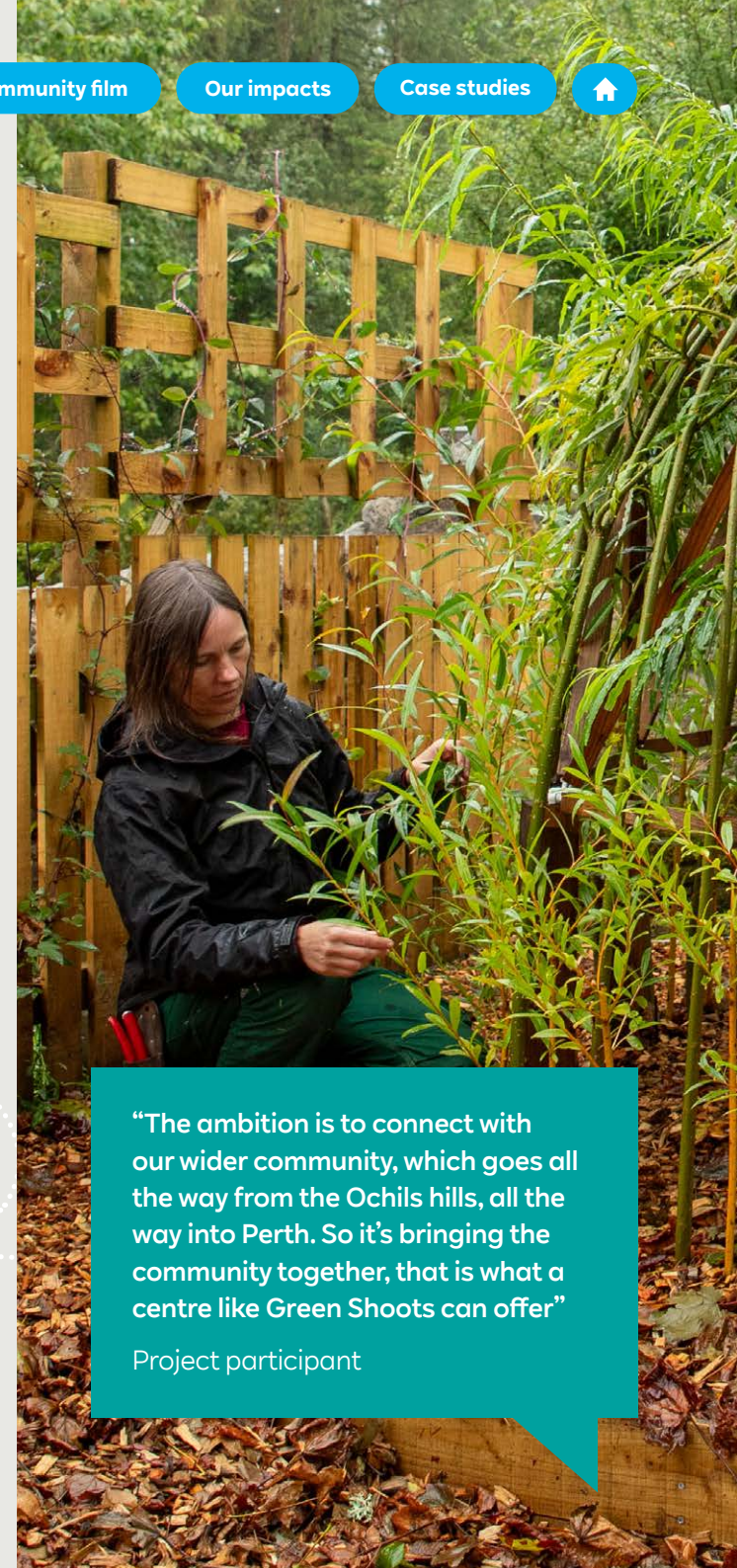
The initial investment from RWE also allowed Green Shoots to access match funding, making the contribution go even further.

The impact of a project like Green Shoots on the local community cannot be overstated.

For parents, it provides a welcoming space where children can play together and friendships between neighbours can flourish.

For kids, it offers the chance to explore nature beyond screens and develop social connections in a safe, engaging environment.

The space draws people for many reasons, but most importantly, it brings all ages together, fostering lasting bonds within the community.



**“The ambition is to connect with our wider community, which goes all the way from the Ochils hills, all the way into Perth. So it’s bringing the community together, that is what a centre like Green Shoots can offer”**

Project participant

# Katy Woodington MBE

UK Community Investment Lead



**Reflecting on 2025, I feel immense pride, not only in our achievements, but also in the people, partnerships, and communities supporting each one. This year ended with a moment I never expected: being awarded an MBE.**

While deeply personal, this recognition firmly belongs to others: my amazing team, our dedicated fund administrators, community panel members, voluntary sector partners and, above all, the volunteers and community leaders who turn ideas into action every day. Their determination and generosity of time are the foundations of everything we do.

Across the UK, we see the power of trusting communities to lead. In Wales, neighbouring our Clocaenog Onshore Wind Farm, the evolving Llanfwrog community-led affordable housing project shows how renewable energy funding can drive lasting change. Careful engagement, strong governance and partnership, are creating a locally owned solution that could enable young people to stay in their communities, a strong example of impactful, place-based investment.

Elsewhere, urgency demanded flexibility. In Llanpumsaint, the campaign to save The Railway Inn from auction might have faltered without rapid, community-driven decisions

from the Brechfa Onshore Wind Farm Fund panel. Swift governance support and the ability to act at pace are now guiding this cherished pub towards community ownership.

In Caithness, 2025 has been about listening and co-design. With significant additional community investment forthcoming, we are working with local panels to shape a new regional approach. Ahead of its launch in 2026, the principles of Caithness Futures are clear: complementing local funds, addressing gaps, and creating lasting regional benefits.

This focus on legacy is highlighted in the Brechfa Wind Farm Community Fund's decision to create an endowment fund, which reflects a maturing conversation about building community wealth and sustainability beyond the lifespan of a single project.

I hope our new Copse Lodge solar fund, supported by Grantscape, will be one of many as our UK solar portfolio grows.

Community investment is not an add-on to the energy transition. It is fundamental to building trust, resilience, and opportunity. I am incredibly proud of what communities are achieving and excited for what comes next.

*Katy*

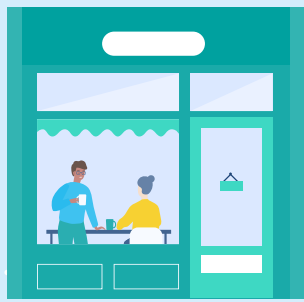
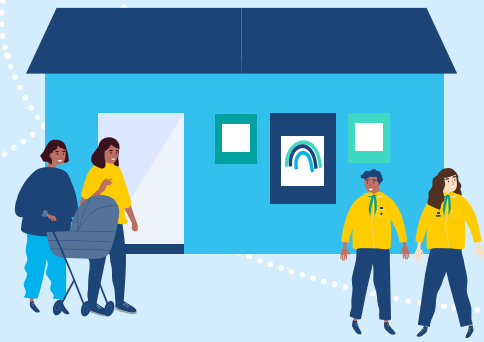
Our impacts

Case studies



# RWE

**Reduces the disadvantage gap**  
Cleethorpes Rotary Club |  
Humber Gateway Offshore Wind Farm



**The funding has taken the pressure off**  
Leiston Book Festival |  
Galloper Offshore Wind Farm



## What community funding means for projects...

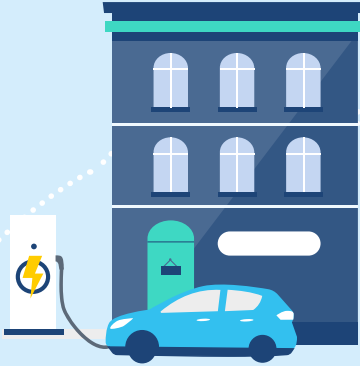


**Secured the future of the hall well beyond my lifetime**  
Shadforth Village Hall |  
Butterwick More Onshore Wind Farm

**It opened doors and strengthened community relationships**  
Caged Steel Communities |  
Tween Bridge Onshore Wind Farm

**Providing a sense of stability and reassurance**  
Folkestone Rainbow Centre |  
Little Cheyne Onshore Wind Farm

**Lasting impact to the community**  
1compass |  
Gwynt Y Môr Offshore Wind Farm



Discover more about our projects:  
[uk.rwe.com/in-your-community](https://uk.rwe.com/in-your-community)