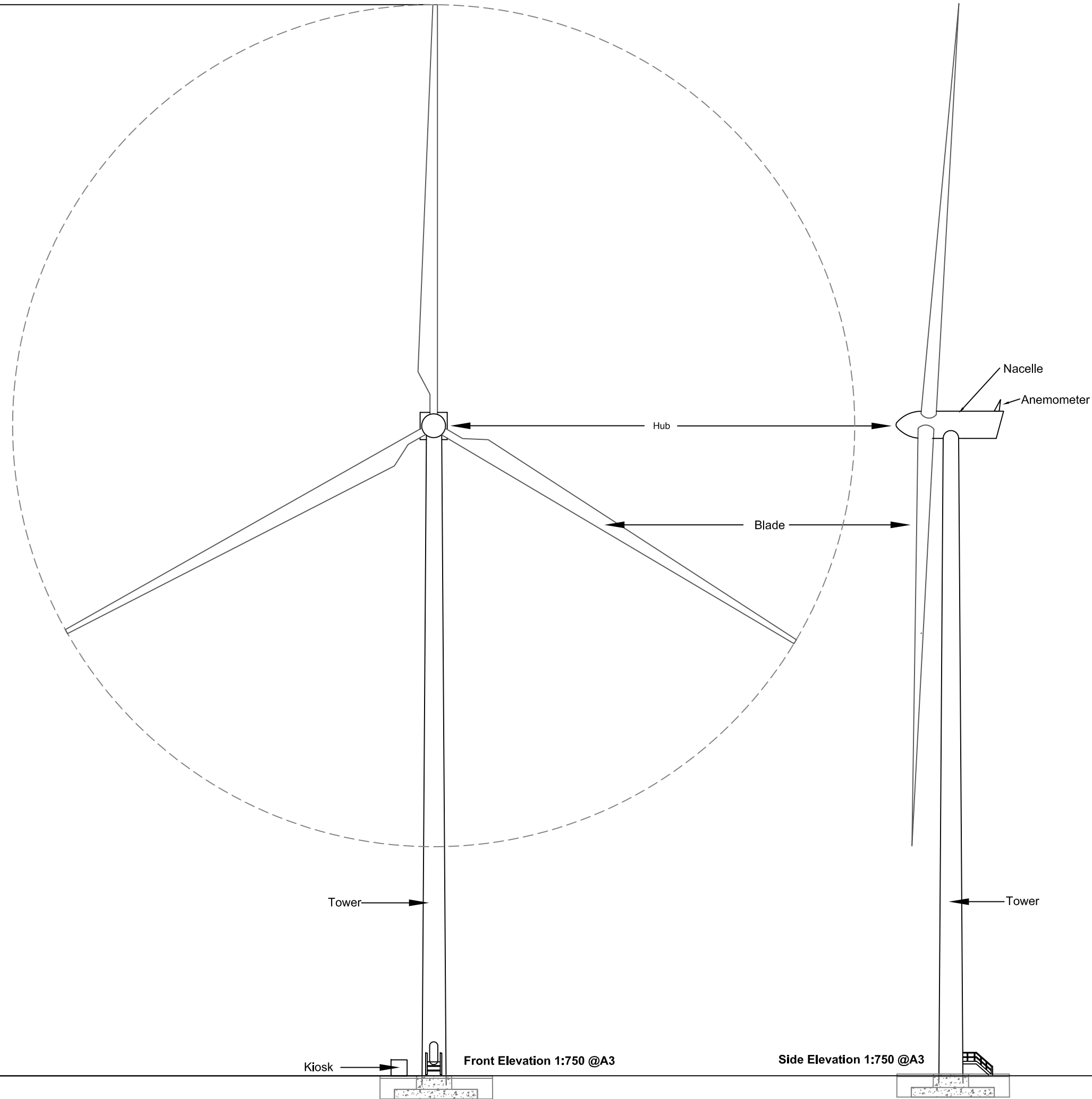
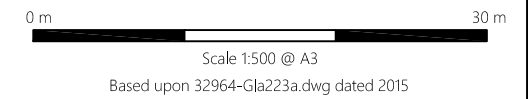


Maximum Tip Height 200m



Notes

1. This drawing is for illustrative purposes only
2. Drawing based typical turbine equal to or greater than 6.3MW
3. Maximum tip height will not exceed 200m



Client



Lorg Wind Farm  
Environmental Impact Assessment Report

**Figure 3.2**  
**Typical wind turbine structure**

October 2022

