

0 km 3 km
Scale 1:50,000 @ A3

- Wind Farm Key:**
- ⬆ Lorg Wind Farm
 - ⬆ Consented
 - ⬆ Application
 - ⬆ Scoping
 - ⬆ Existing

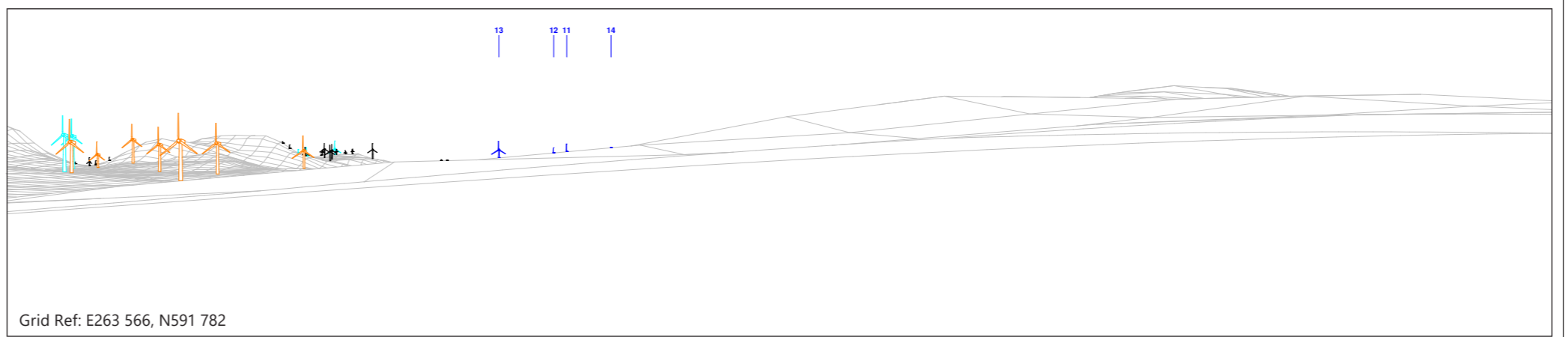
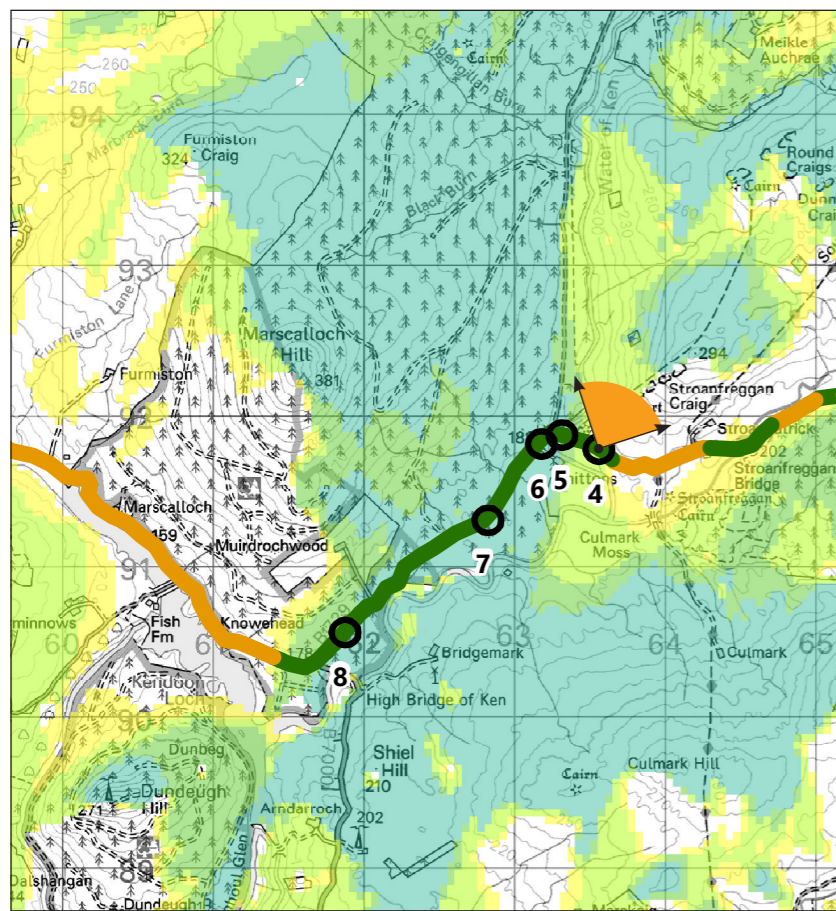
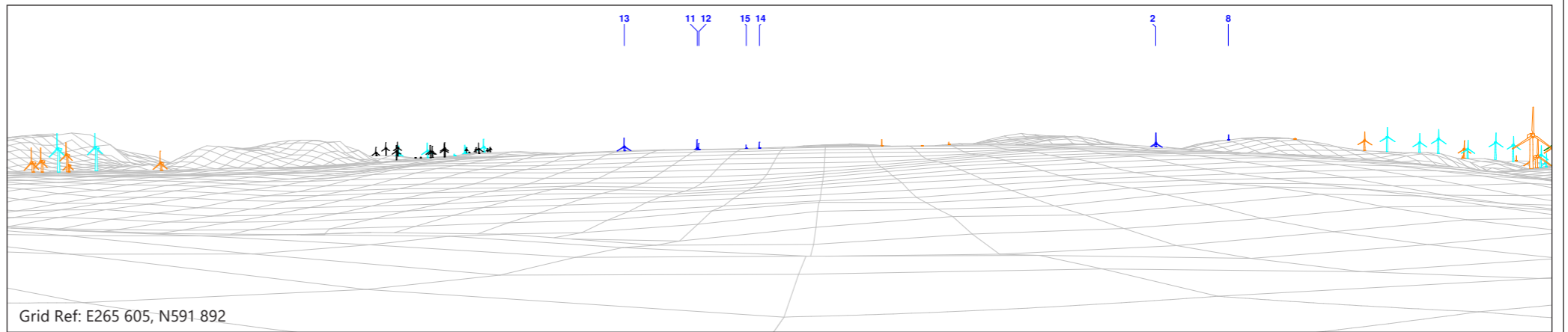
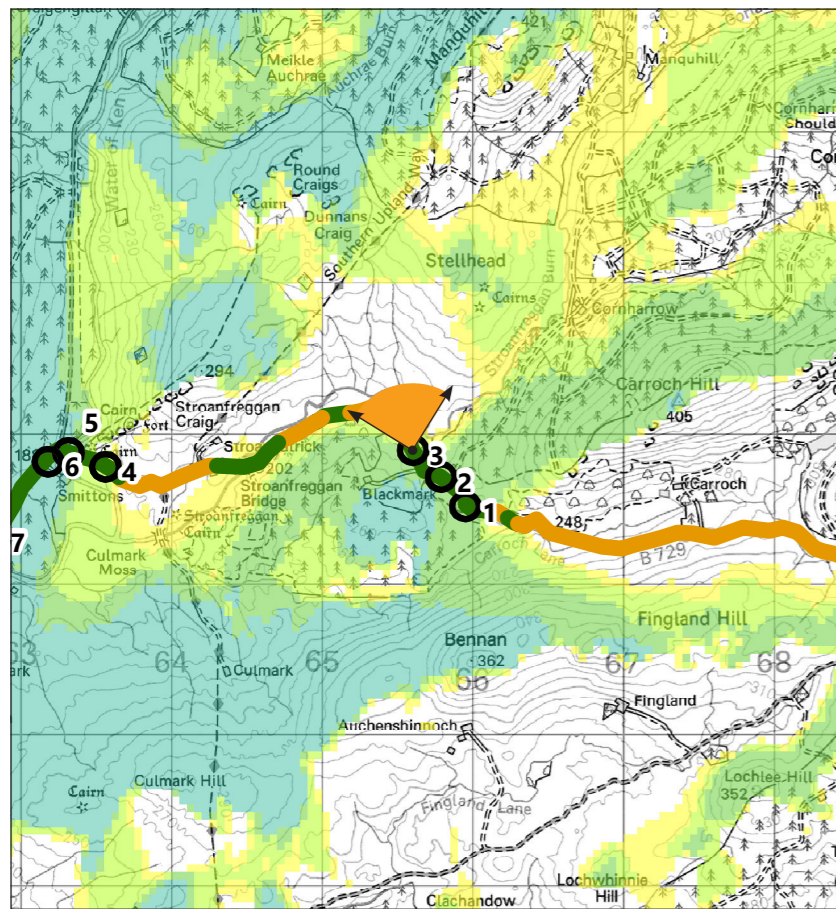
- Notes:
- i) Key for ZTV as illustrated on Figure 9.19a.
 - ii) The turbine visibility from the road has been evaluated through the use of site survey, wirelines and Google street view. It takes account of the screening effects of localised landform, vegetation and built form.
 - iii) Wirelines illustrate a 90° field of view (unless otherwise stated) and are provided for illustrative purposes only.



Figure 9.19b
Lorg Wind Farm
EIA Report
Sequential Route Assessment - B729

October 2022





0 km 3 km
Scale 1:50,000 @ A3

Wind Farm Key:

- Lorg Wind Farm
- Existing
- Consented
- Application
- Scoping

- Notes:
- i) Key for ZTV as illustrated on Figure 9.19a.
 - ii) The turbine visibility from the road has been evaluated through the use of site survey, wirelines and Google street view. It takes account of the screening effects of localised landform, vegetation and built form.
 - iii) Wirelines illustrate a 90° field of view (unless otherwise stated) and are provided for illustrative purposes only.



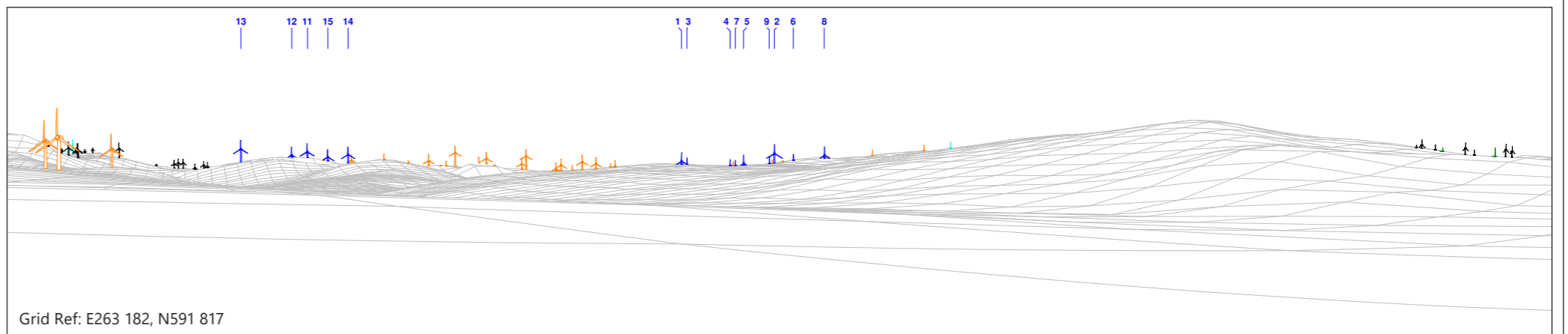
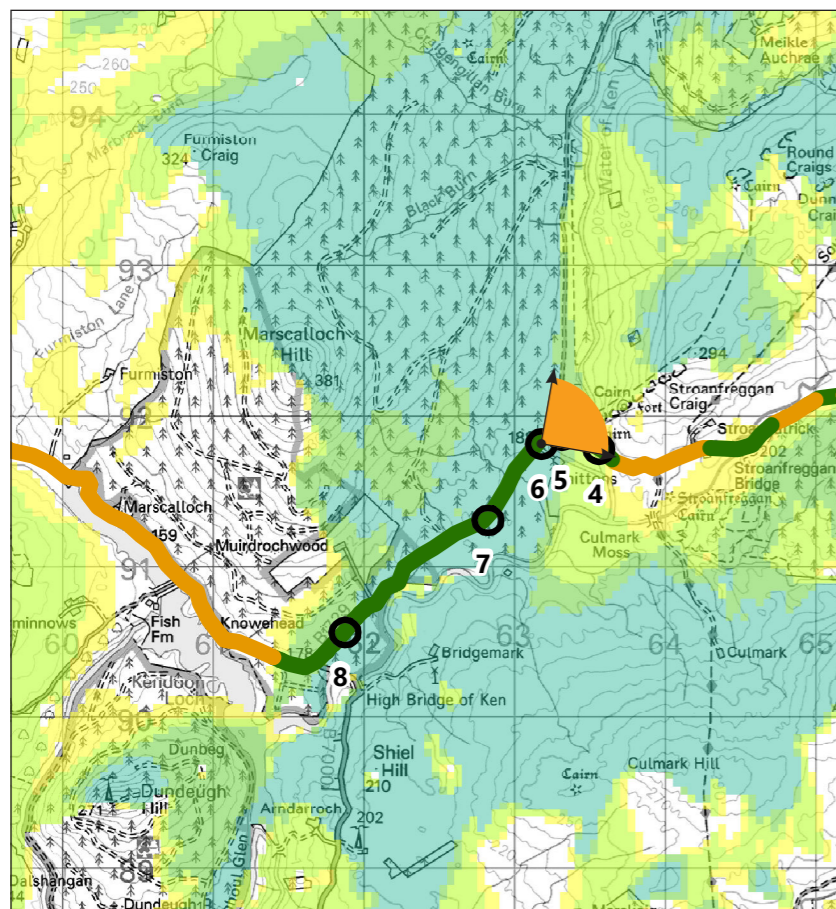
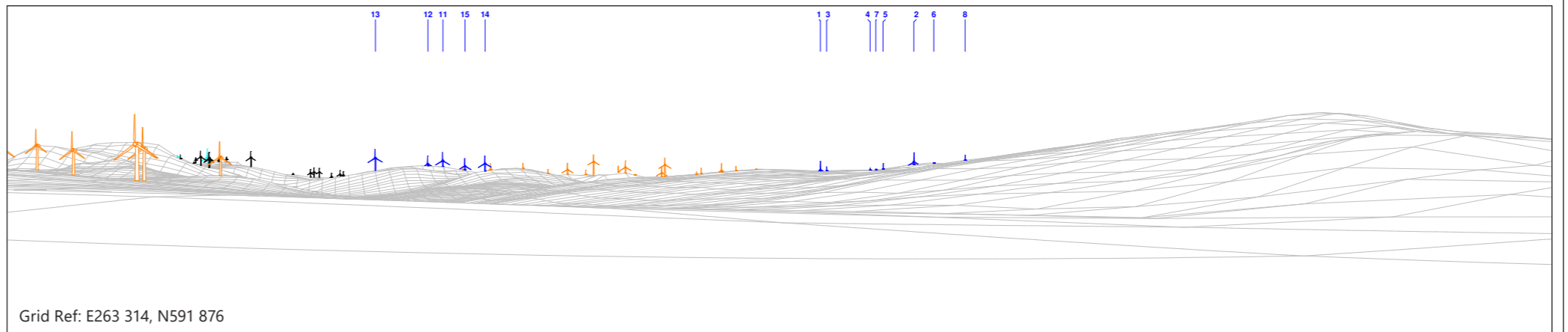
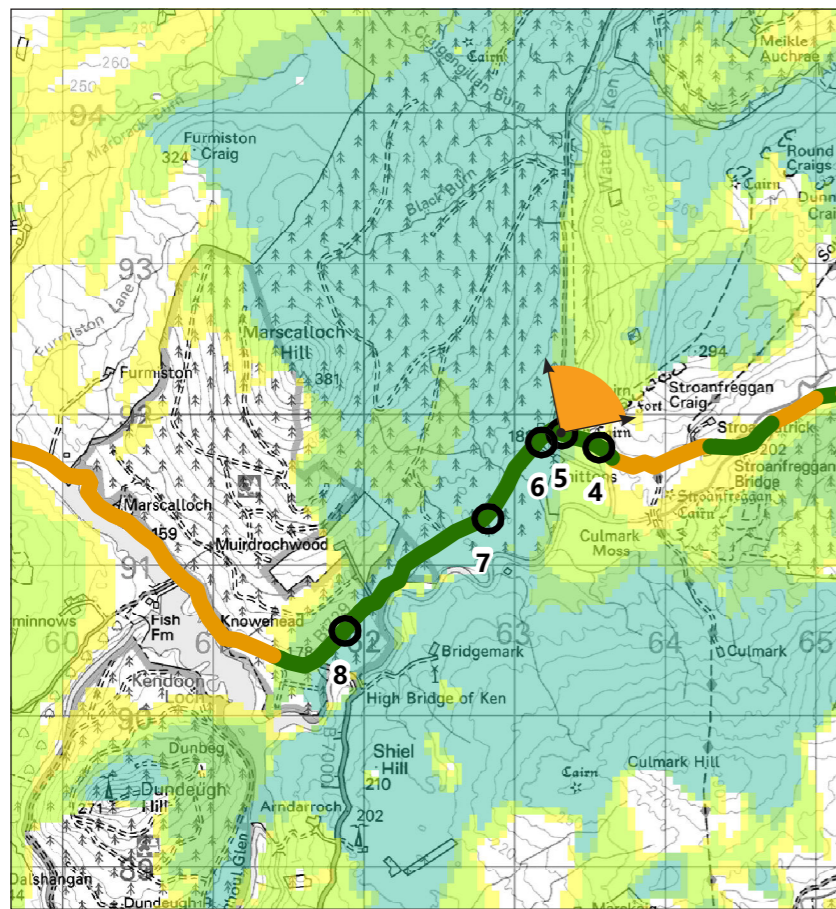
Figure 9.19c

Lorg Wind Farm
EIA Report

Sequential Route Assessment - B729

October 2022





0 km 3 km
Scale 1:50,000 @ A3

Wind Farm Key:

- Lorg Wind Farm
- Existing
- Consented
- Application
- Scoping

- Notes:
- i) Key for ZTV as illustrated on Figure 9.19a.
 - ii) The turbine visibility from the road has been evaluated through the use of site survey, wirelines and Google street view. It takes account of the screening effects of localised landform, vegetation and built form.
 - iii) Wirelines illustrate a 90° field of view (unless otherwise stated) and are provided for illustrative purposes only.



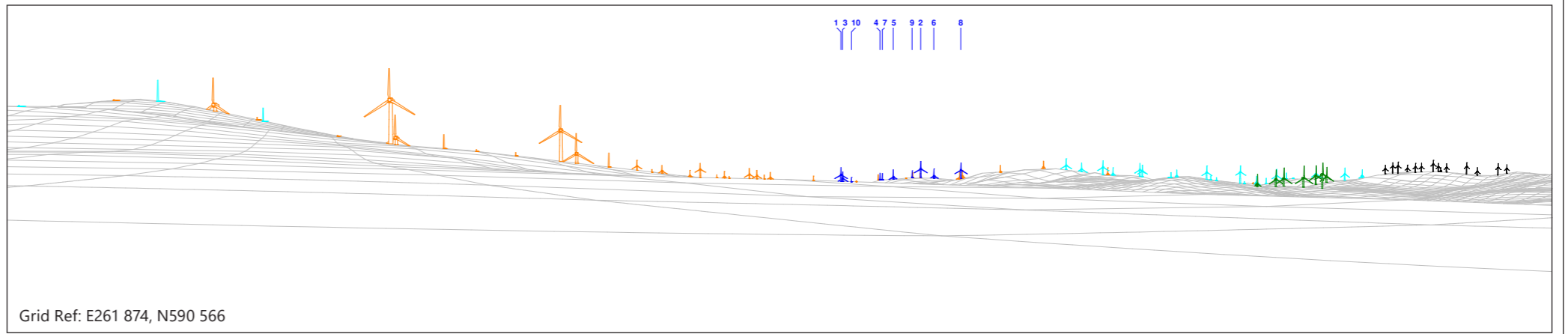
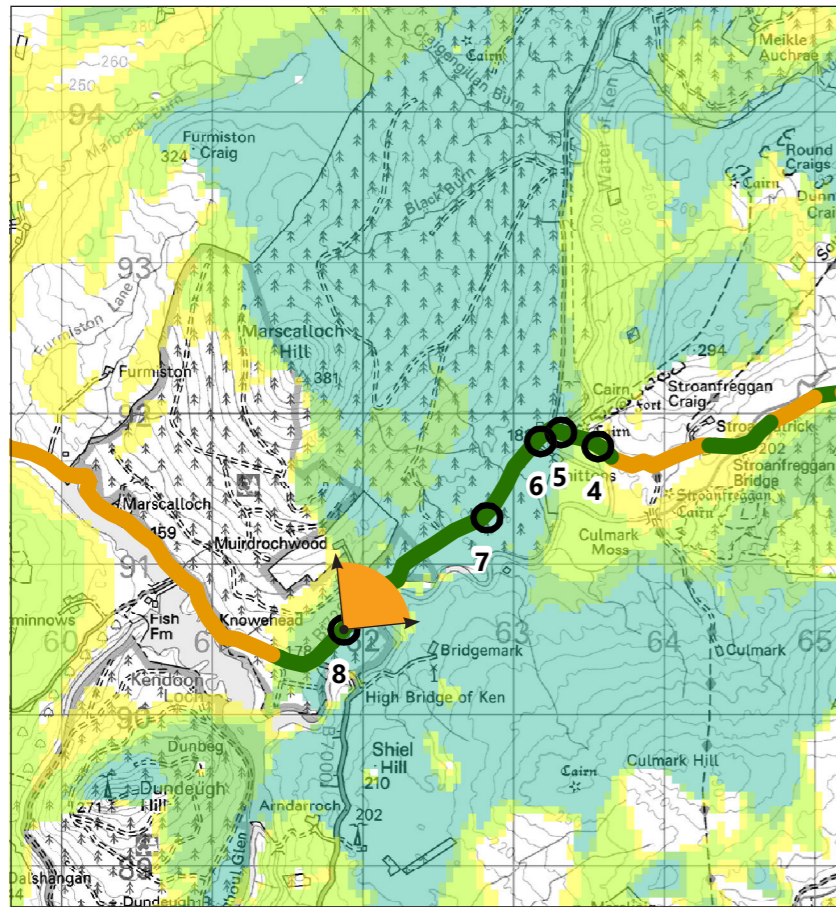
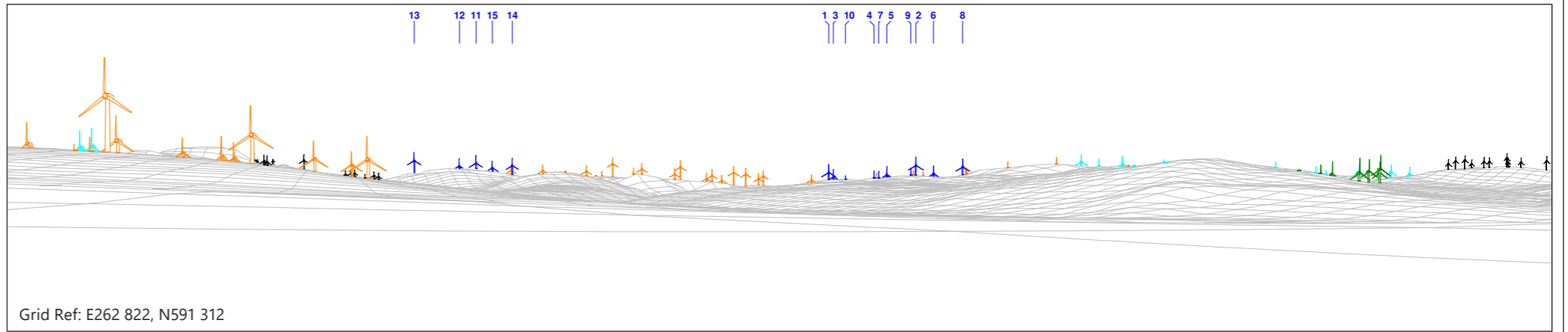
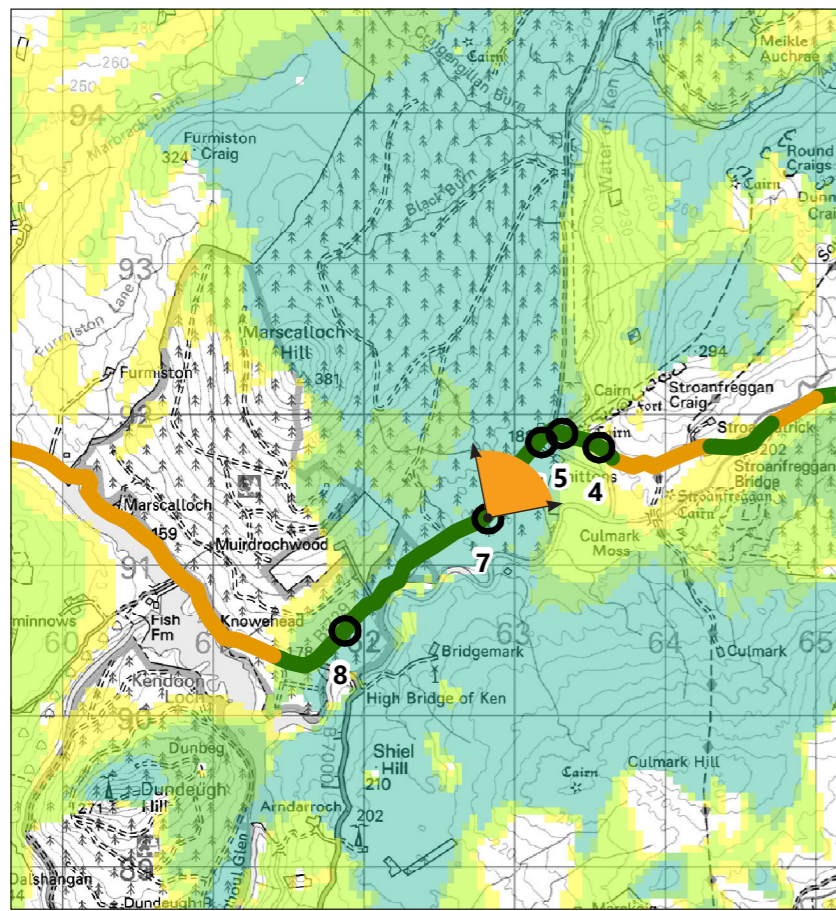
Figure 9.19d

Lorg Wind Farm
EIA Report

Sequential Route Assessment - B729

October 2022





0 km 3 km
Scale 1:50,000 @ A3

Wind Farm Key:

Lorg Wind Farm	Existing
Consented	Application
	Scoping

- Notes:
- i) Key for ZTV as illustrated on Figure 9.19a.
 - ii) The turbine visibility from the road has been evaluated through the use of site survey, wirelines and Google street view. It takes account of the screening effects of localised landform, vegetation and built form.
 - iii) Wirelines illustrate a 90° field of view (unless otherwise stated) and are provided for illustrative purposes only.

Figure 9.19e

Lorg Wind Farm
EIA Report

Sequential Route Assessment - B729

