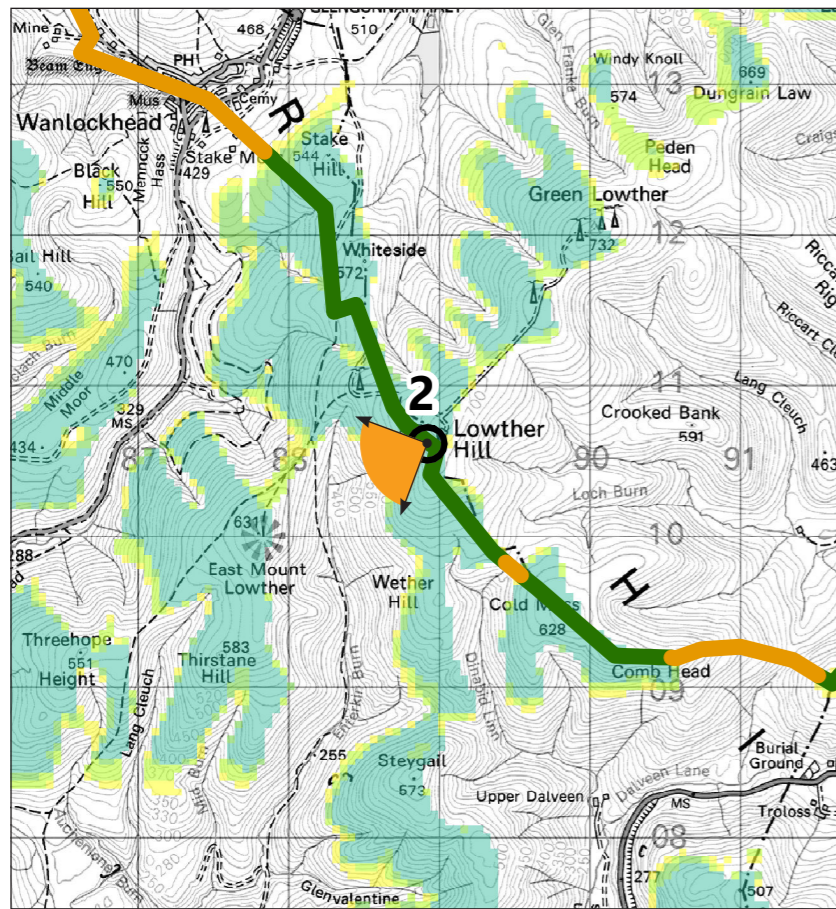
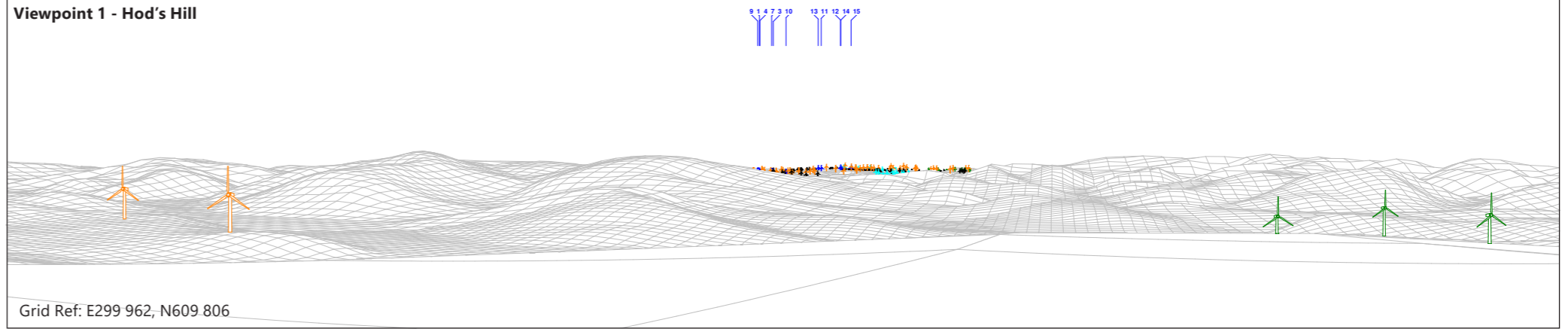
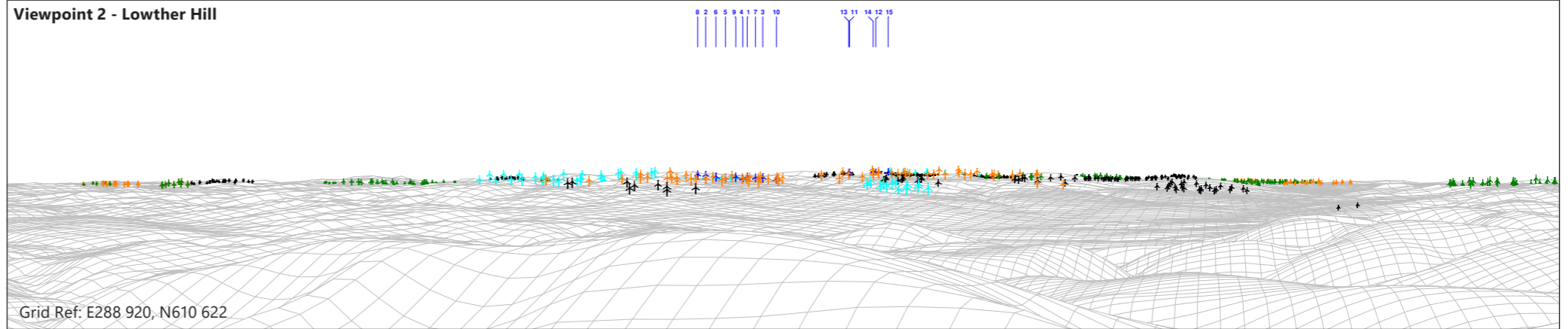


Viewpoint 1 - Hod's Hill



Viewpoint 2 - Lowther Hill



0 km 3 km
Scale 1:50,000 @ A3

Wind Farm Key:

	Long Wind Farm		Existing
	Consented		Application
	Scoping		

- Notes:
- i) Key for ZTV as illustrated on Figure 9.20a.
 - ii) The turbine visibility from the road has been evaluated through the use of site survey, wirelines and Google street view. It takes account of the screening effects of localised landform, vegetation and built form.
 - iii) Wirelines illustrate a 90° field of view (unless otherwise stated) and are provided for illustrative purposes only.



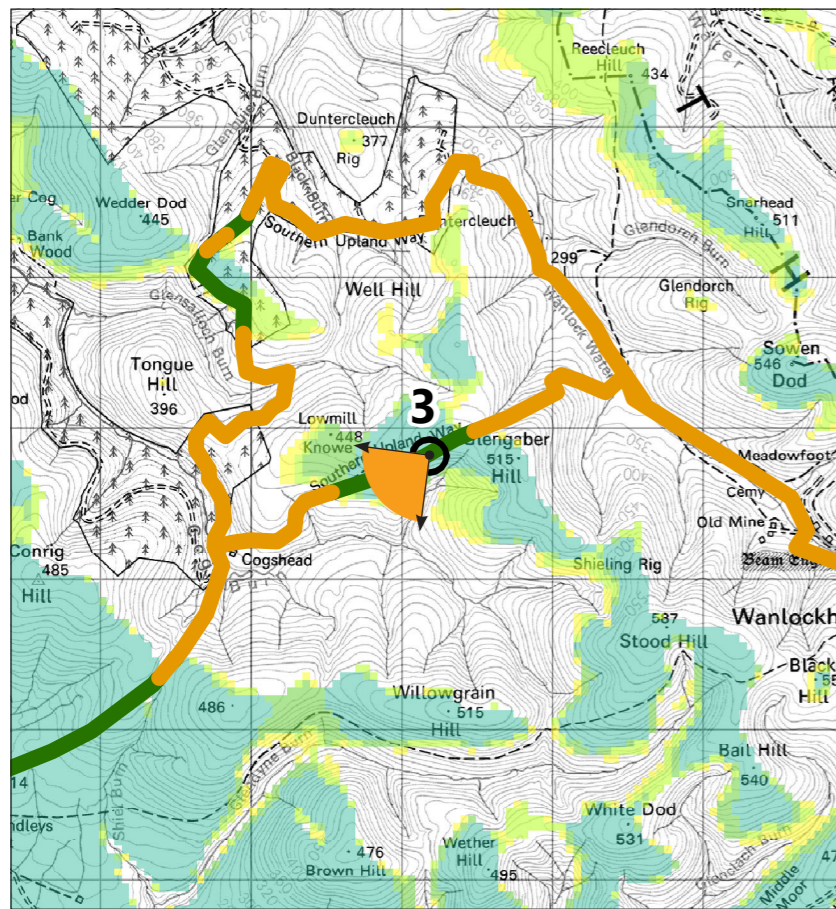
Figure 9.20b

Long Wind Farm
EIA Report

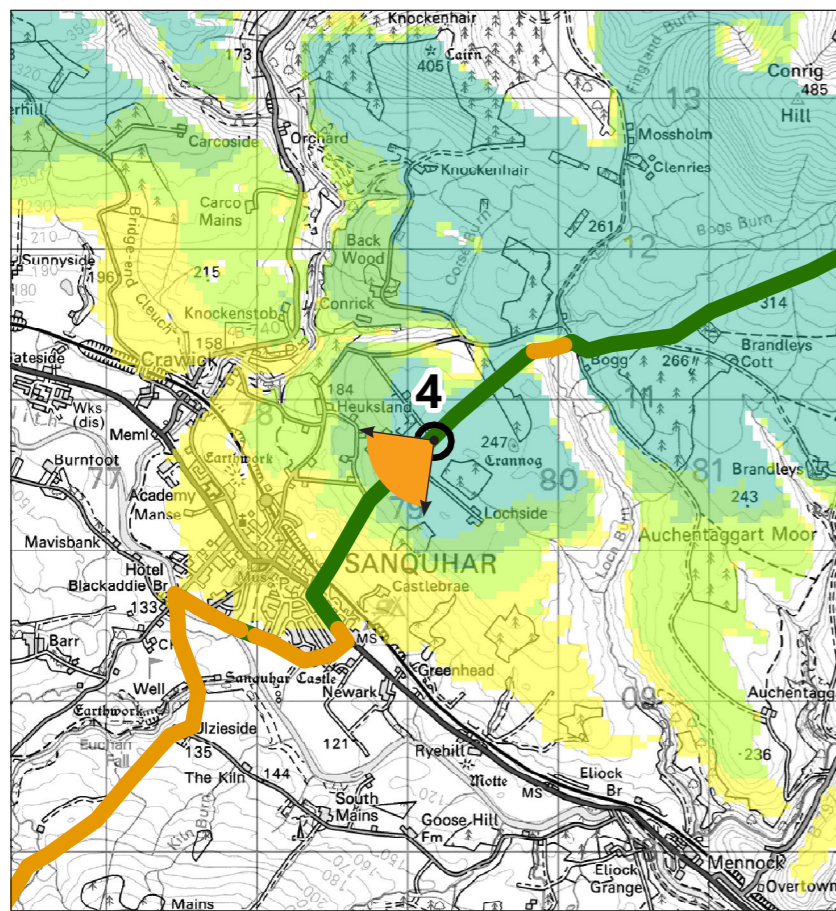
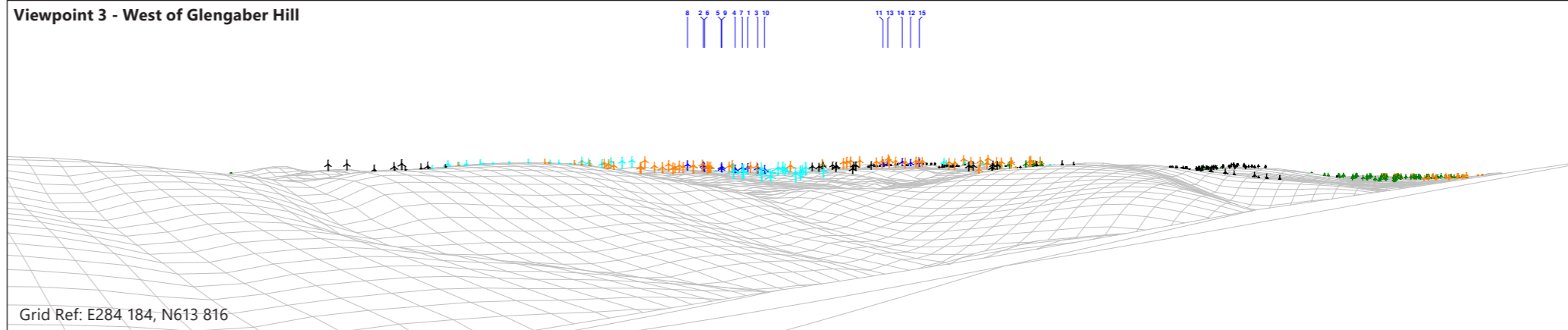
**Sequential Route Assessment
- Southern Upland Way**

October 2022





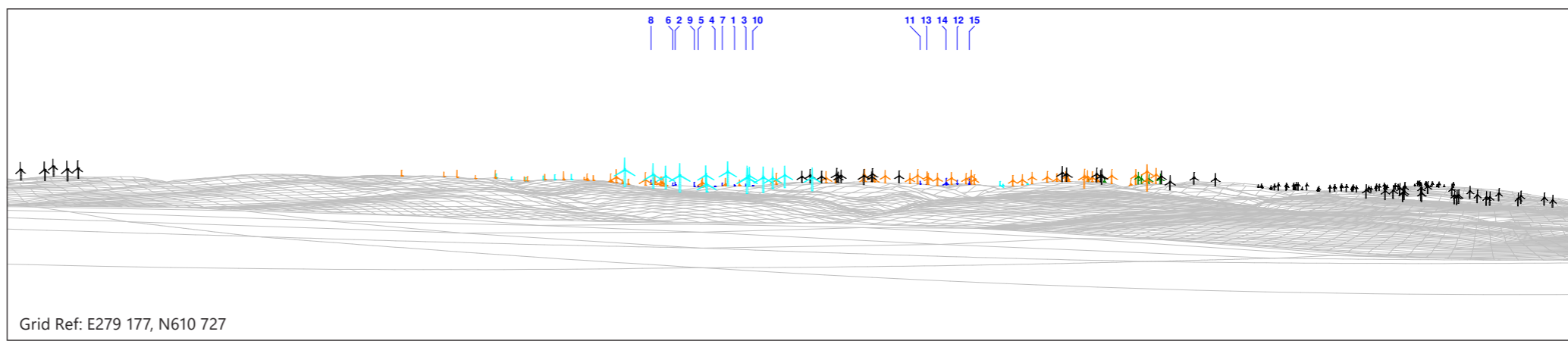
Viewpoint 3 - West of Glengaber Hill



Viewpoint 4 - Northeast of Sanquhar



Photograph Taken: 10/06/2015



0 km 3 km
Scale 1:50,000 @ A3

Wind Farm Key: Long Wind Farm Existing
 Consented Application Scoping

- Notes:
- i) Key for ZTV as illustrated on Figure 9.20a.
 - ii) The turbine visibility from the road has been evaluated through the use of site survey, wirelines and Google street view. It takes account of the screening effects of localised landform, vegetation and built form.
 - iii) Wirelines illustrate a 90° field of view (unless otherwise stated) and are provided for illustrative purposes only.



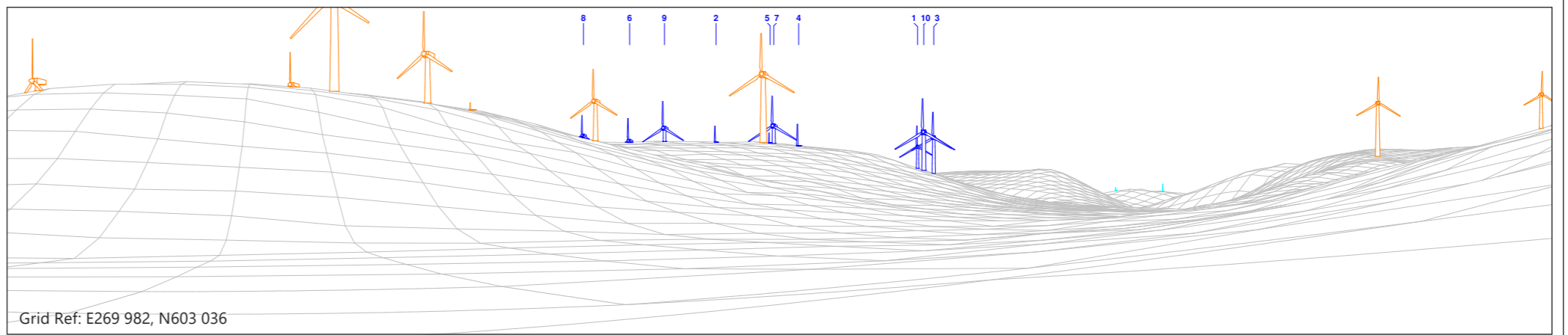
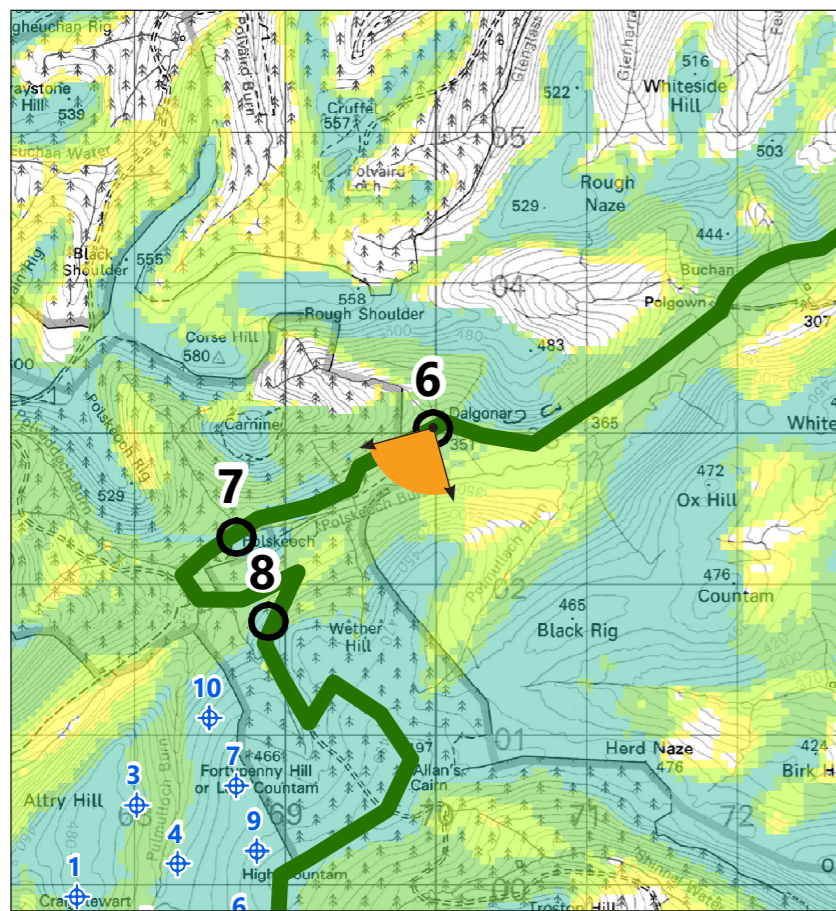
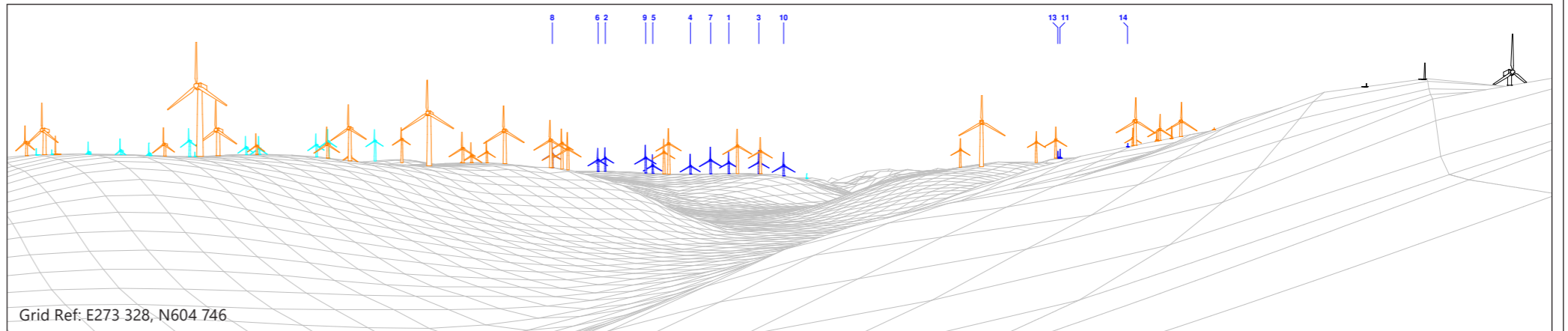
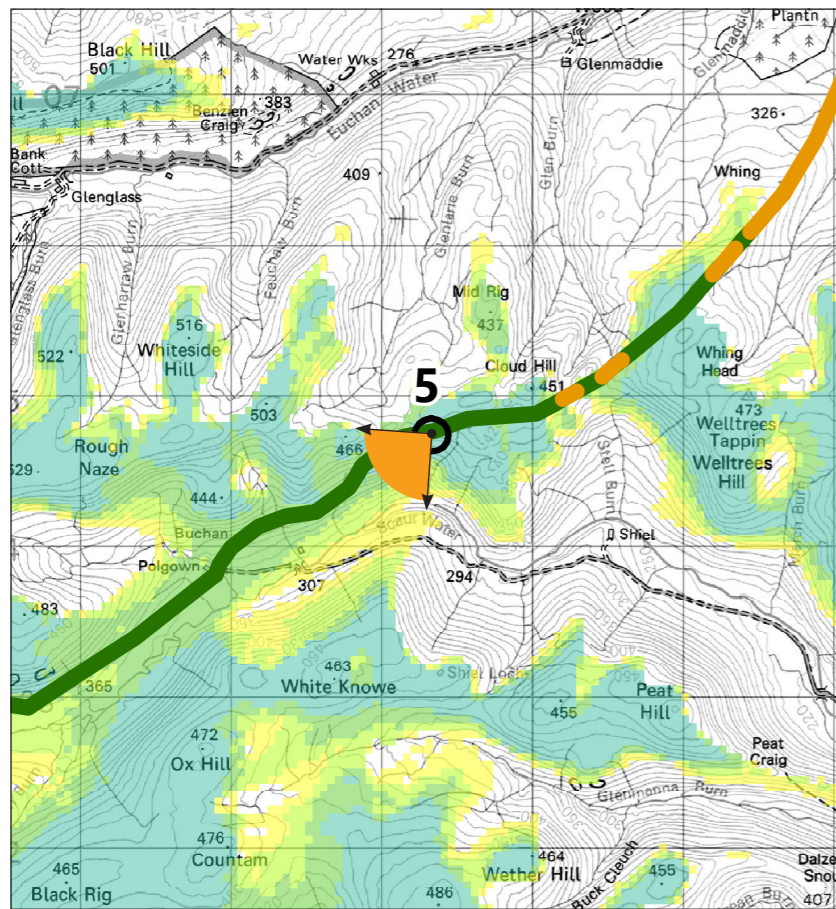
Figure 9.20c

Long Wind Farm
EIA Report

**Sequential Route Assessment
- Southern Upland Way**

October 2022





0 km 3 km
Scale 1:50,000 @ A3

Wind Farm Key:

- ⬆ Lorg Wind Farm
- ⬆ Consented
- ⬆ Application
- ⬆ Existing
- ⬆ Scoping

- Notes:
- i) Key for ZTV as illustrated on Figure 9.20a.
 - ii) The turbine visibility from the road has been evaluated through the use of site survey, wirelines and Google street view. It takes account of the screening effects of localised landform, vegetation and built form.
 - iii) Wirelines illustrate a 90° field of view (unless otherwise stated) and are provided for illustrative purposes only.

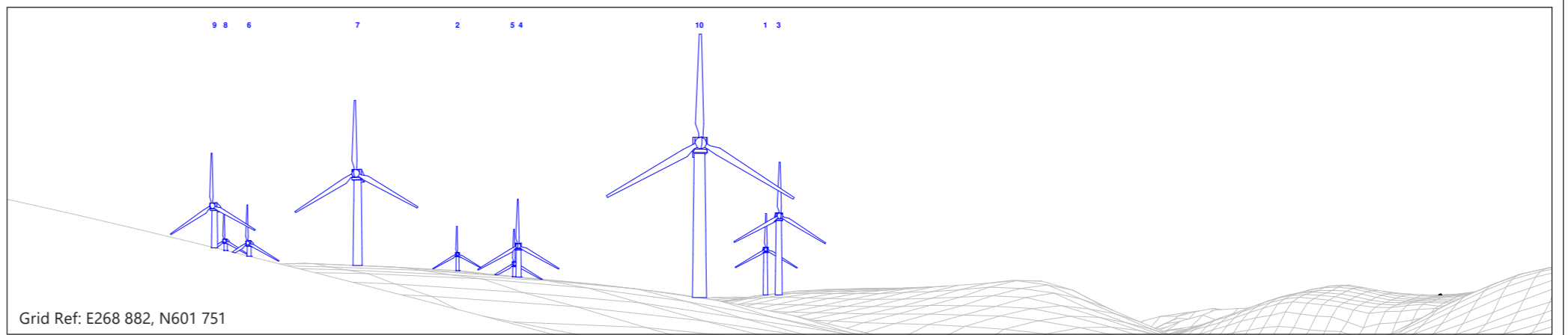
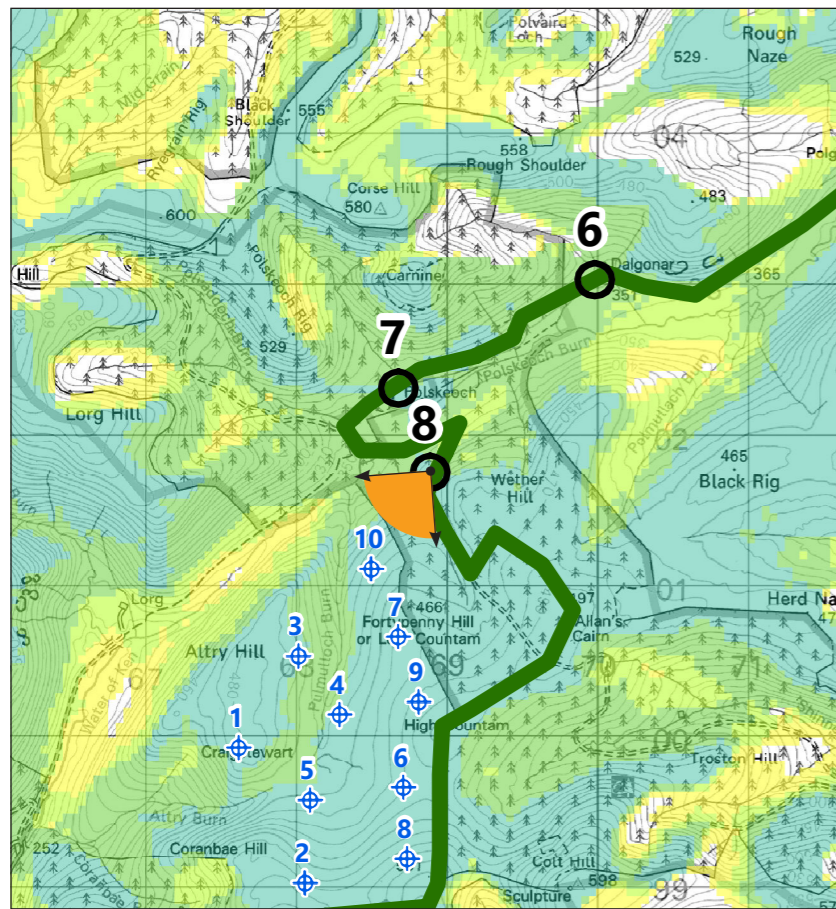
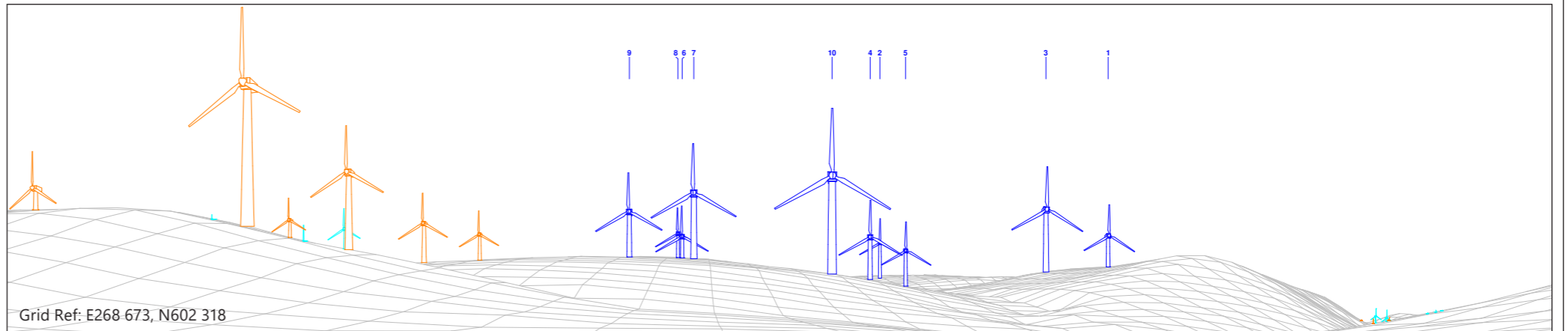
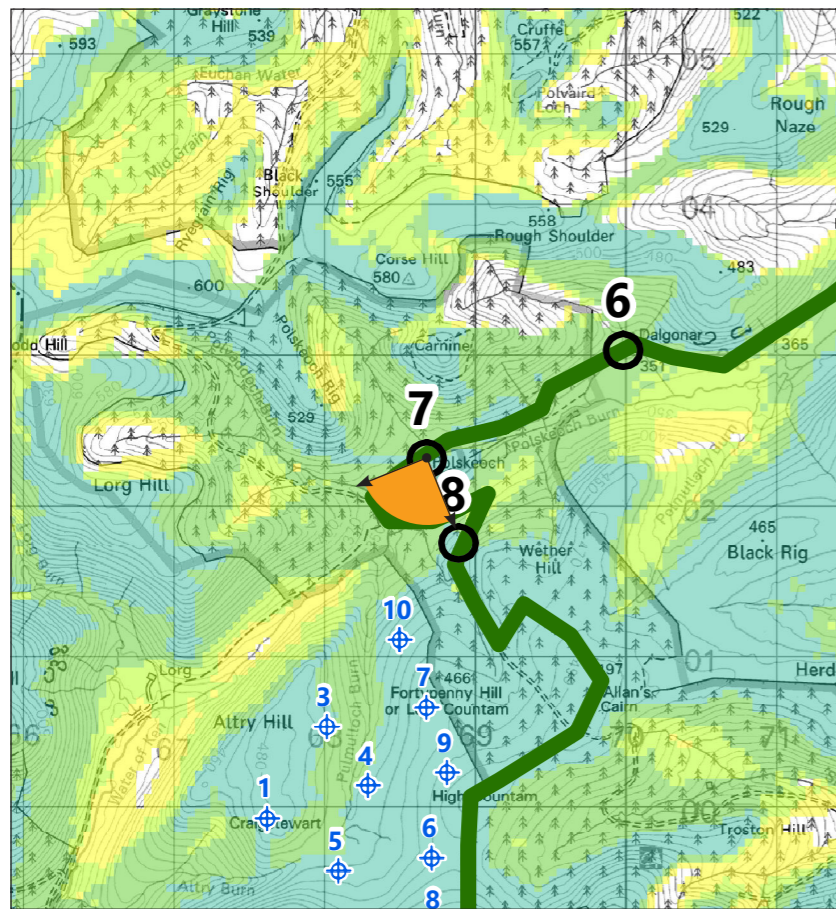
Figure 9.20d

Lorg Wind Farm
EIA Report

**Sequential Route Assessment
- Southern Upland Way**

October 2022





0 km 3 km
Scale 1:50,000 @ A3

Wind Farm Key:

	Lorg Wind Farm		Existing
	Consented		Application
			Scoping

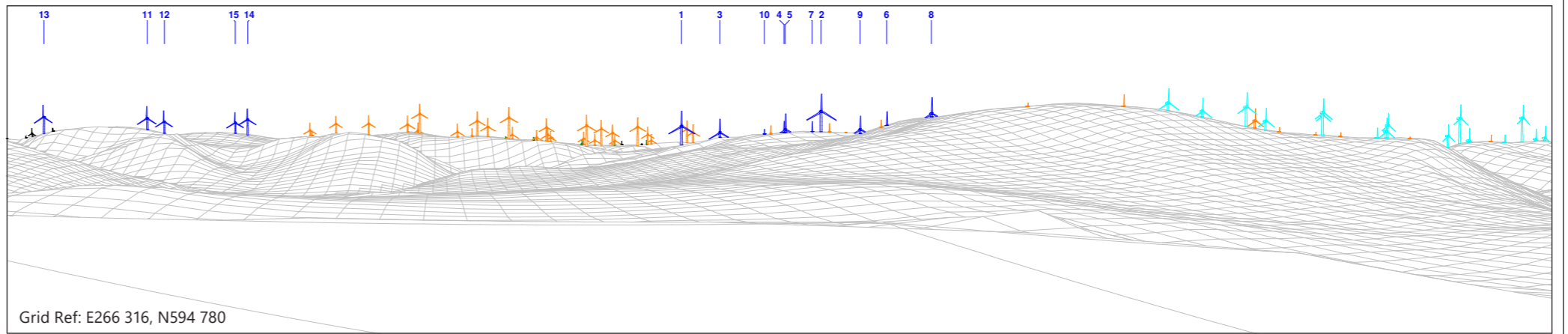
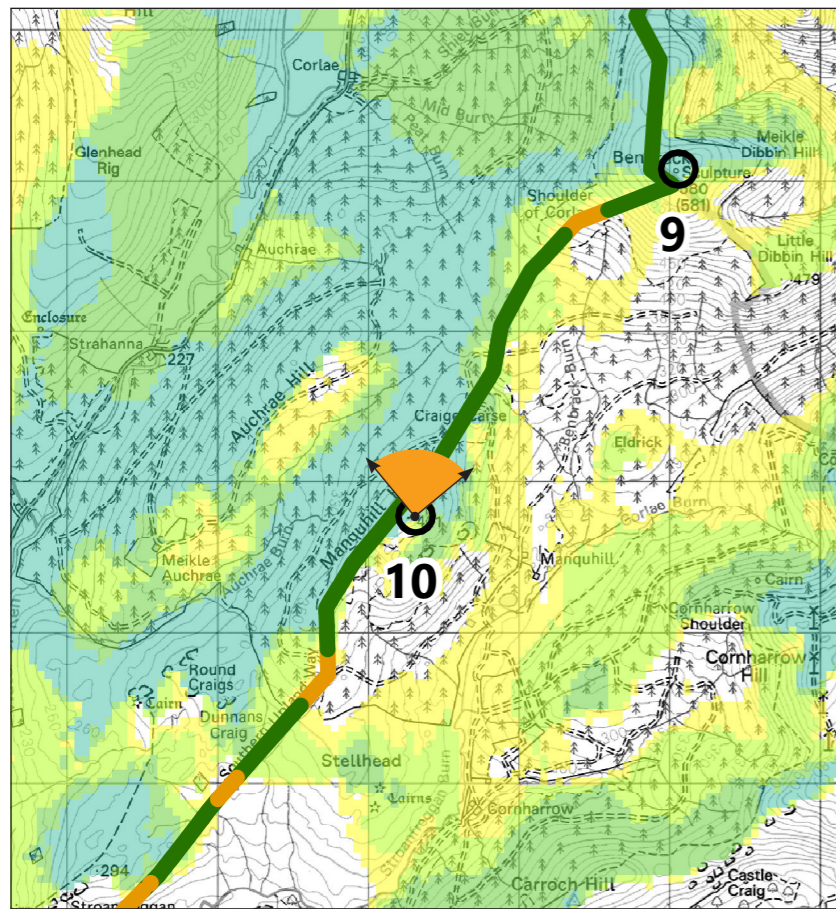
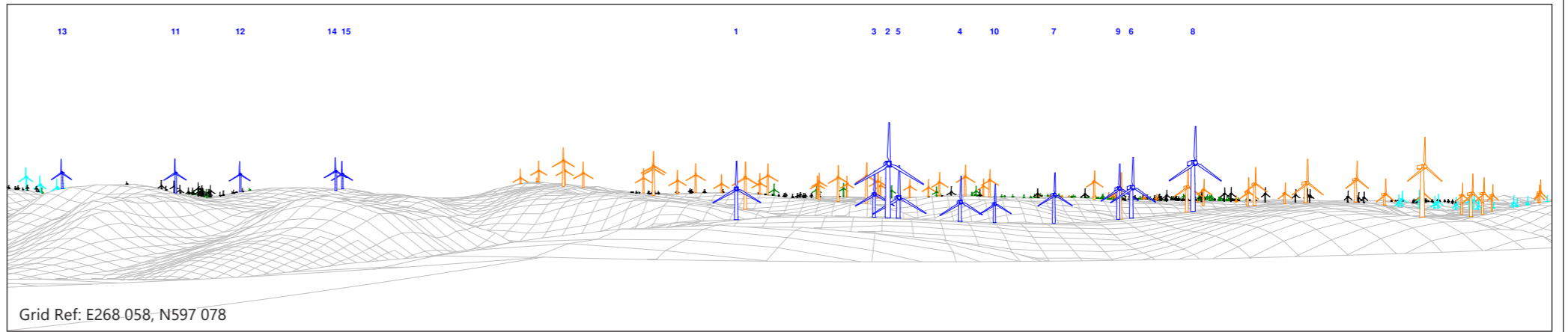
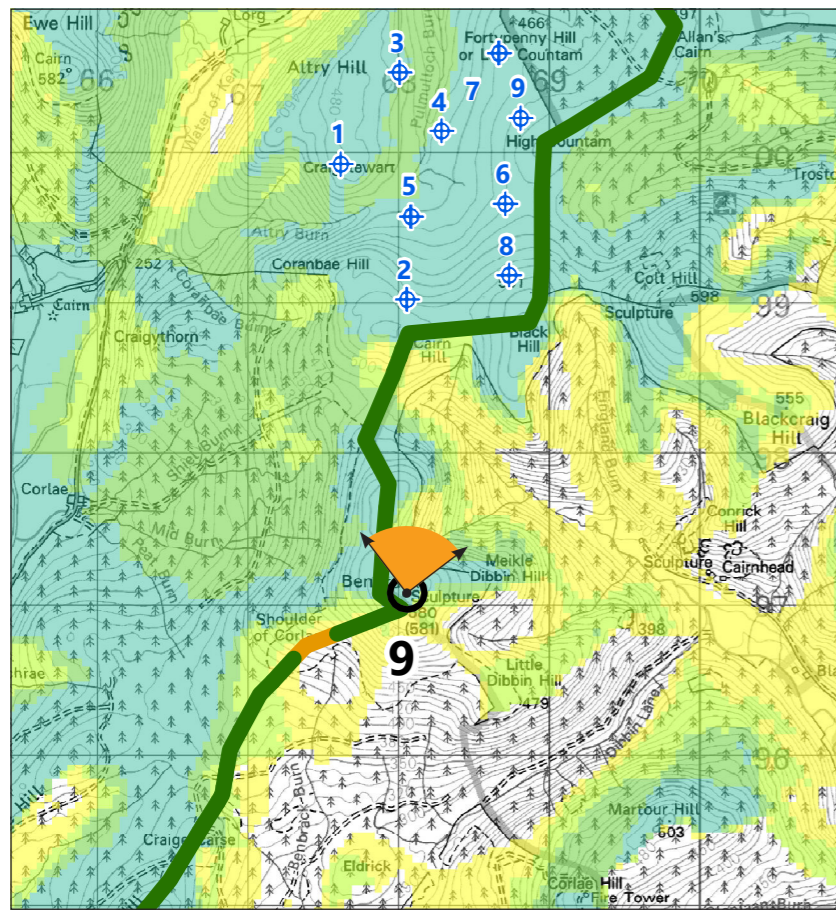
- Notes:
- i) Key for ZTV as illustrated on Figure 9.20a.
 - ii) The turbine visibility from the road has been evaluated through the use of site survey, wirelines and Google street view. It takes account of the screening effects of localised landform, vegetation and built form.
 - iii) Wirelines illustrate a 90° field of view (unless otherwise stated) and are provided for illustrative purposes only.



Figure 9.20e
Lorg Wind Farm
EIA Report
Sequential Route Assessment
- Southern Upland Way

October 2022





0 km 3 km
Scale 1:50,000 @ A3

Wind Farm Key: ⬆ Lorg Wind Farm ⬆ Existing
⬆ Consented ⬆ Application ⬆ Scoping

- Notes:
- i) Key for ZTV as illustrated on Figure 9.20a.
 - ii) The turbine visibility from the road has been evaluated through the use of site survey, wirelines and Google street view. It takes account of the screening effects of localised landform, vegetation and built form.
 - iii) Wirelines illustrate a 90° field of view (unless otherwise stated) and are provided for illustrative purposes only.



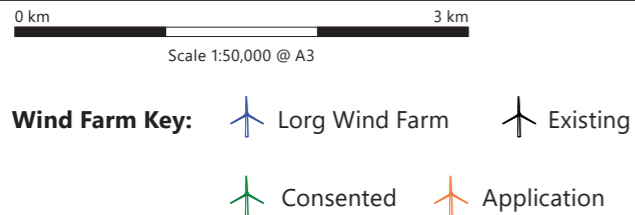
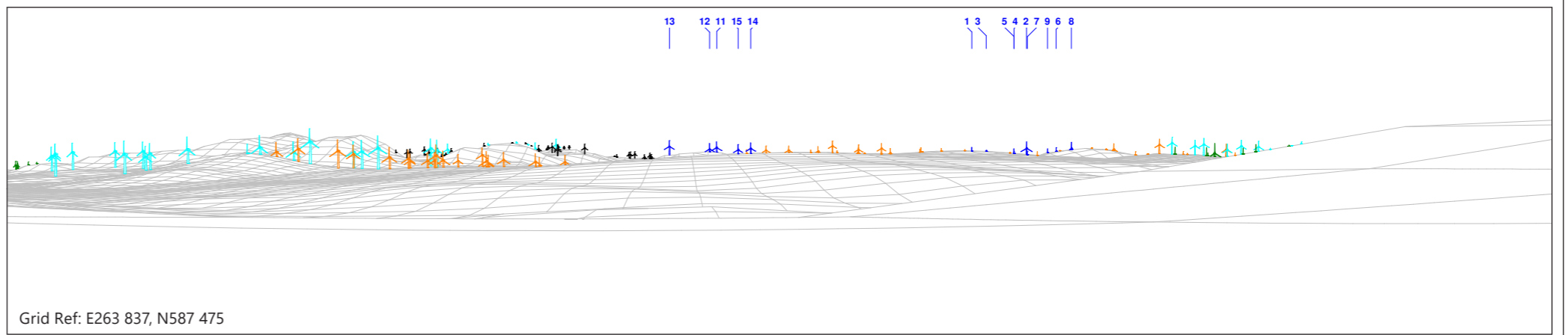
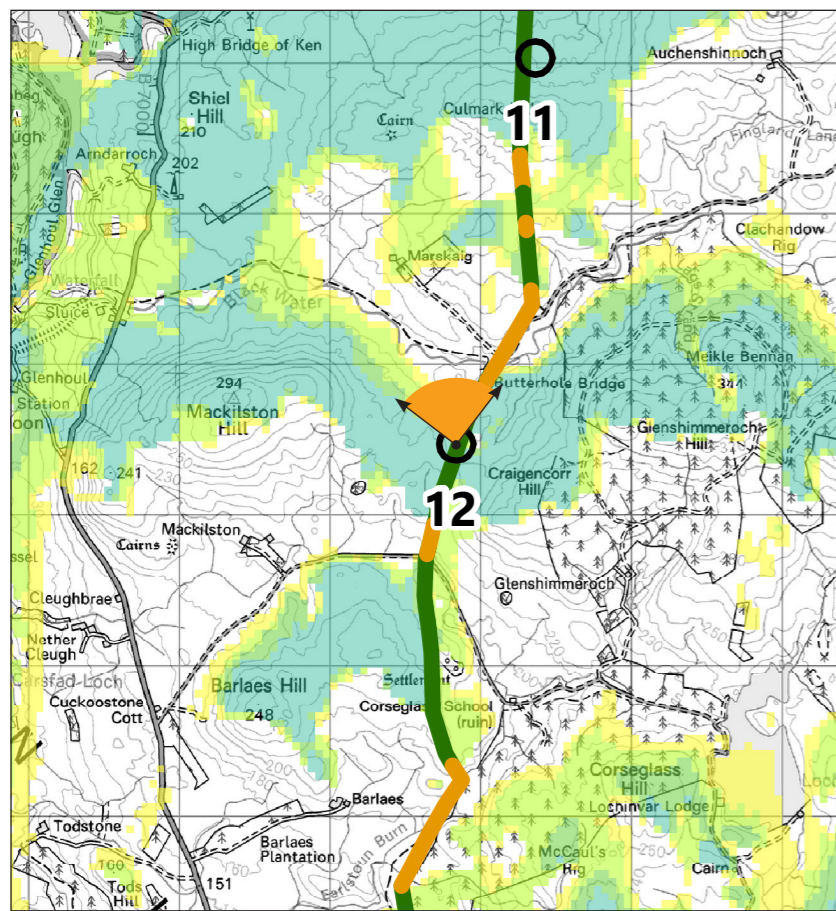
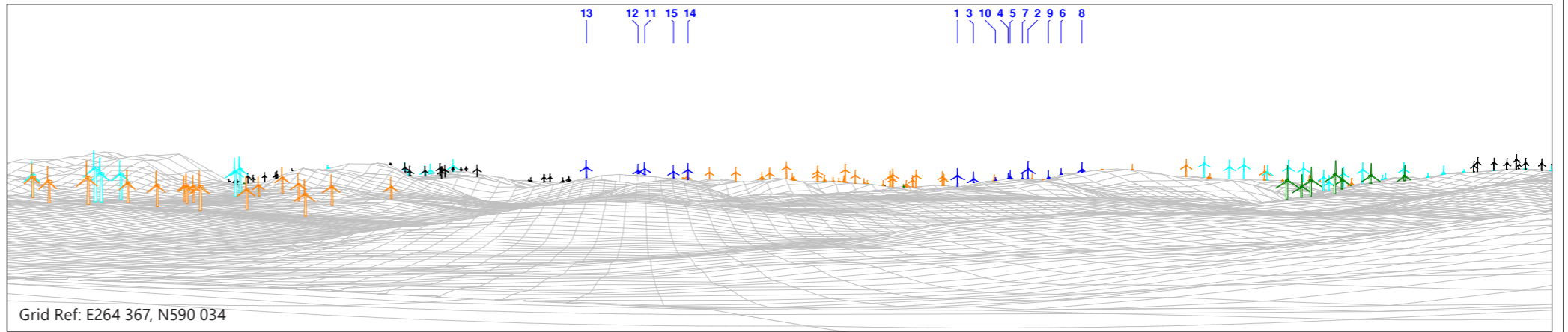
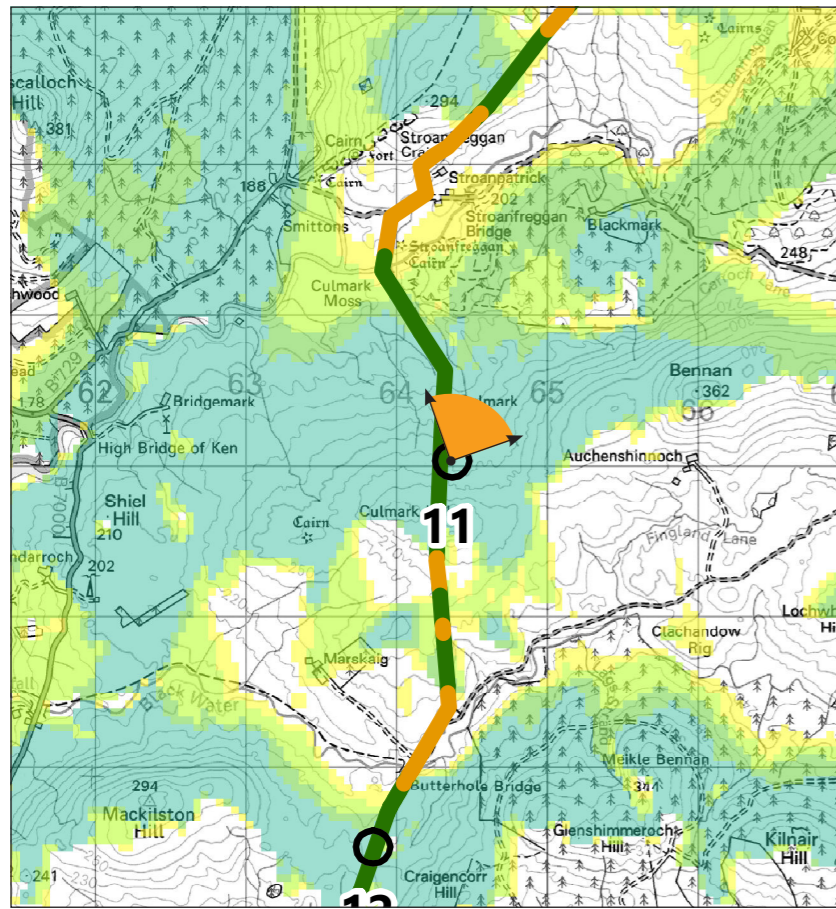
Figure 9.20f

Lorg Wind Farm
EIA Report

**Sequential Route Assessment
- Southern Upland Way**

October 2022





Notes:

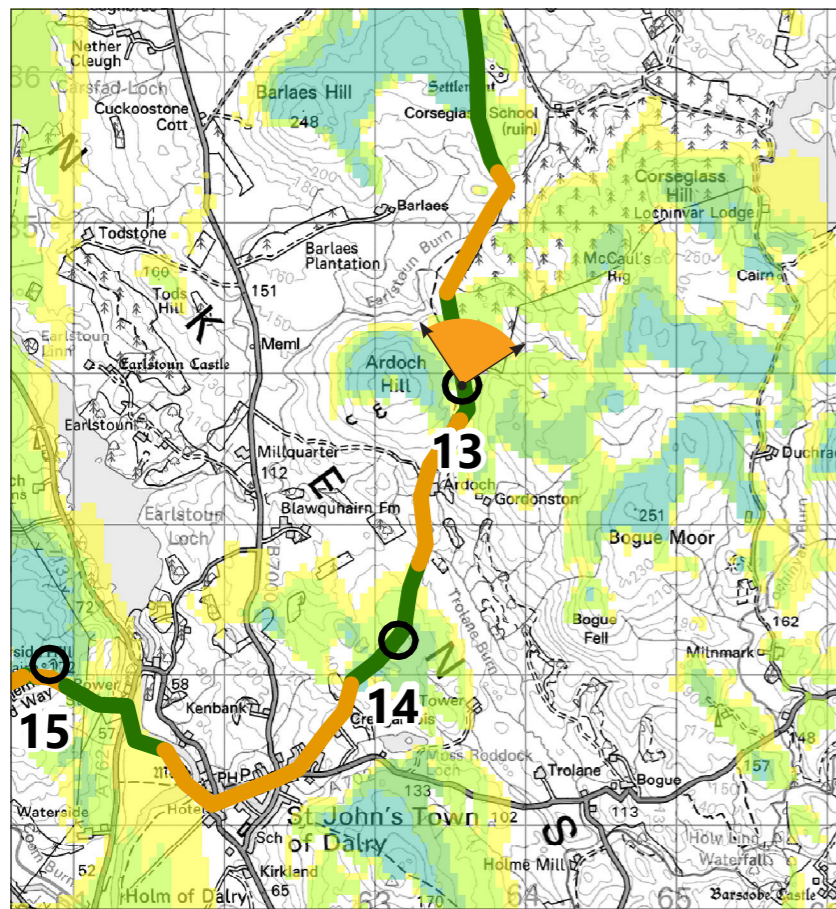
- i) Key for ZTV as illustrated on Figure 9.20a.
- ii) The turbine visibility from the road has been evaluated through the use of site survey, wirelines and Google street view. It takes account of the screening effects of localised landform, vegetation and built form.
- iii) Wirelines illustrate a 90° field of view (unless otherwise stated) and are provided for illustrative purposes only.



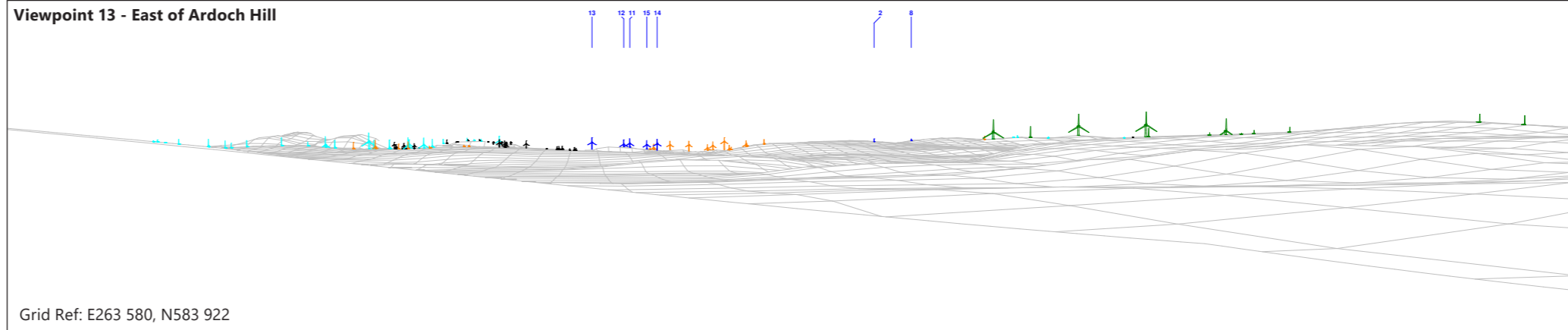
Figure 9.20g
 Long Wind Farm
 EIA Report
Sequential Route Assessment
 - Southern Upland Way

October 2022

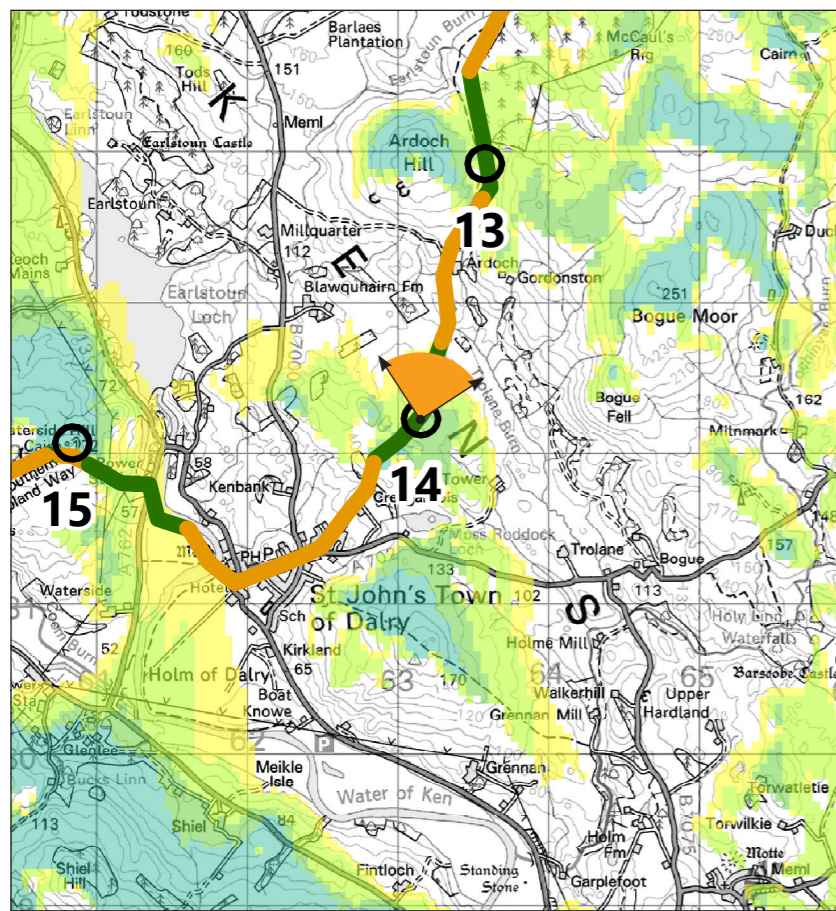




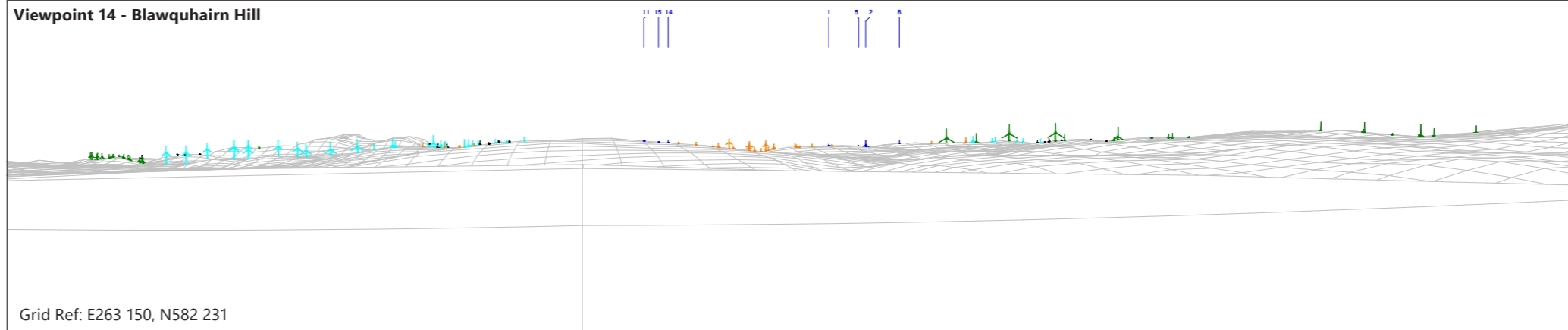
Viewpoint 13 - East of Ardoch Hill



Grid Ref: E263 580, N583 922



Viewpoint 14 - Blawquhairn Hill



Grid Ref: E263 150, N582 231

0 km 3 km
Scale 1:50,000 @ A3

- Wind Farm Key:**
- ↑ Lorg Wind Farm
 - ↑ Consented
 - ↑ Application
 - ↑ Scoping
 - ↑ Existing

- Notes:**
- i) Key for ZTV as illustrated on Figure 9.20a.
 - ii) The turbine visibility from the road has been evaluated through the use of site survey, wirelines and Google street view. It takes account of the screening effects of localised landform, vegetation and built form.
 - iii) Wirelines illustrate a 90° field of view (unless otherwise stated) and are provided for illustrative purposes only.



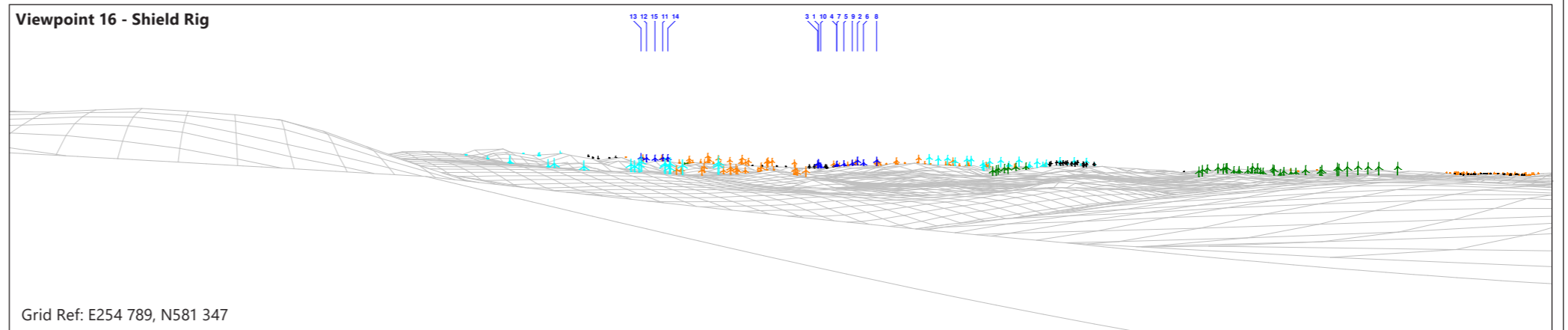
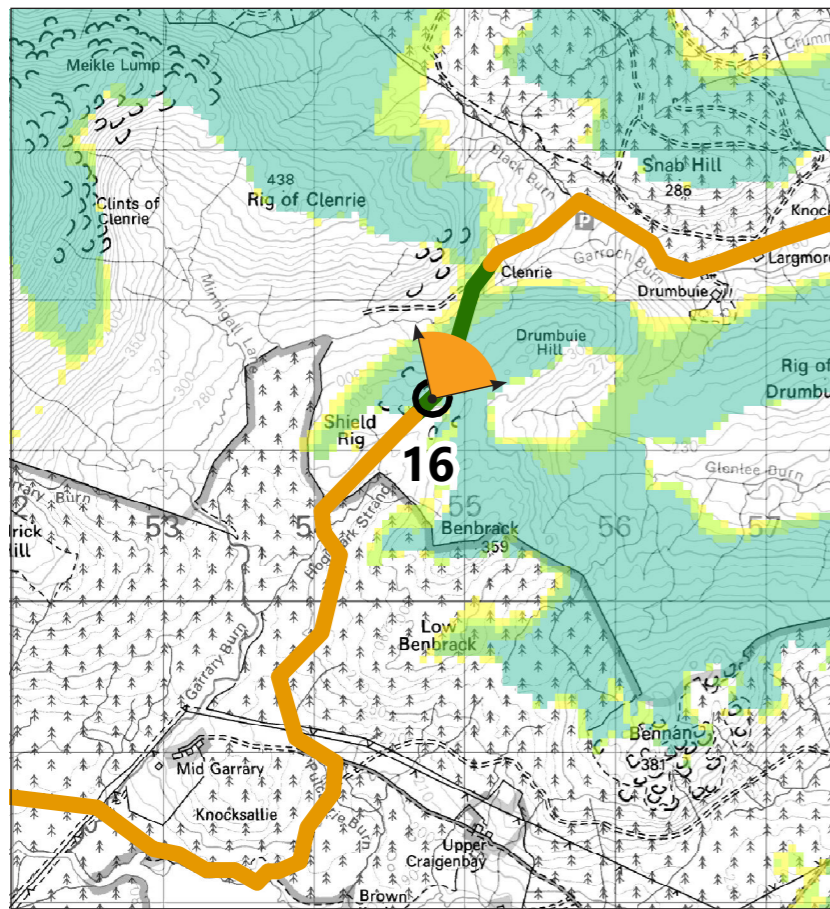
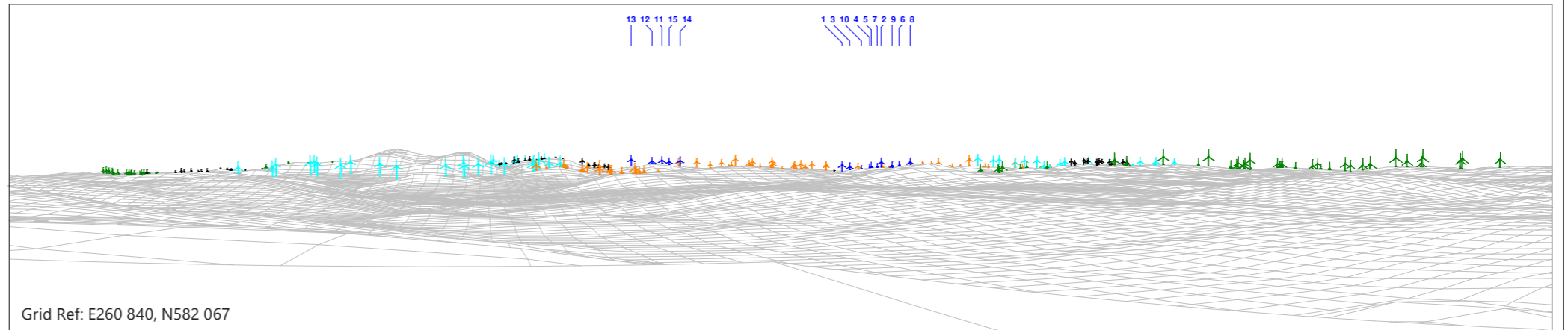
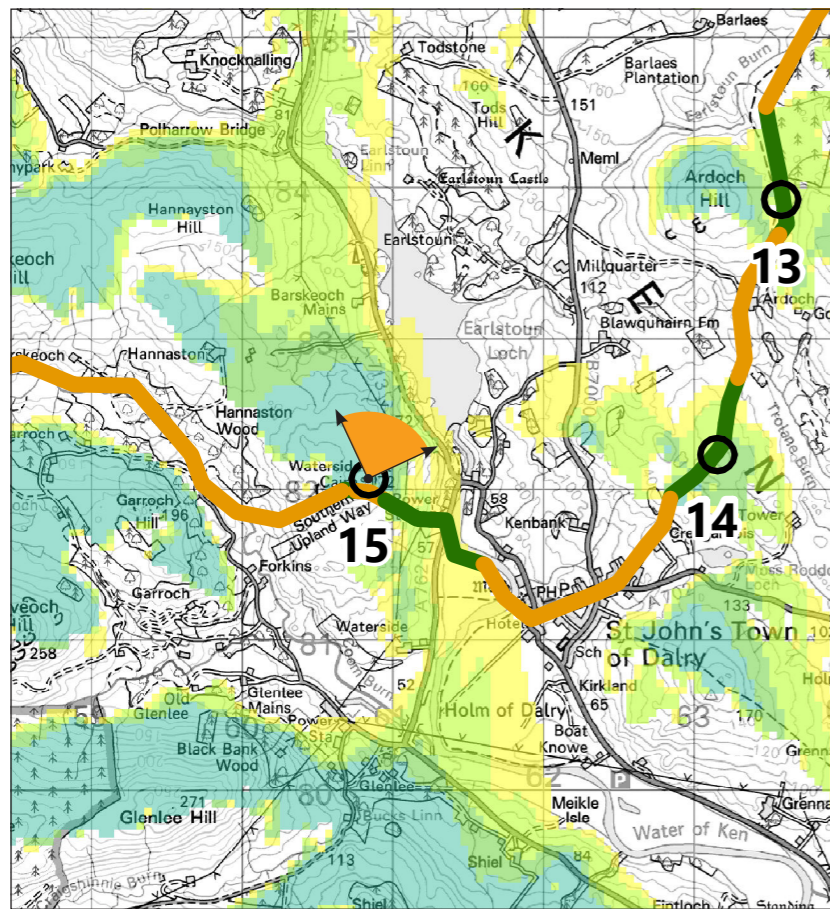
Figure 9.20h

Lorg Wind Farm
EIA Report

**Sequential Route Assessment
- Southern Upland Way**

October 2022





0 km 3 km
Scale 1:50,000 @ A3

- Wind Farm Key:**
- ↑ Lorg Wind Farm
 - ↑ Existing
 - ↑ Consented
 - ↑ Application
 - ↑ Scoping

- Notes:**
- i) Key for ZTV as illustrated on Figure 9.20a.
 - ii) The turbine visibility from the road has been evaluated through the use of site survey, wirelines and Google street view. It takes account of the screening effects of localised landform, vegetation and built form.
 - iii) Wirelines illustrate a 90° field of view (unless otherwise stated) and are provided for illustrative purposes only.



Figure 9.20i

Lorg Wind Farm
EIA Report

**Sequential Route Assessment
- Southern Upland Way**

October 2022

