

### Viewpoint Parameters

OS reference:	E274 952, N614 577
Ground Level Elevation:	465m AOD
Camera Height:	1.5m AGL
Direction of view to site centre <sup>3</sup> :	210°
Distance to nearest turbine:	14,930m
Number of blade tips theoretically visible <sup>4</sup> :	15
Number of hubs theoretically visible <sup>4</sup> :	14
Date and time of viewpoint photography:	15/07/2015 @ 09:10
Camera:	Canon EOS 5D Mk2
Lens:	50mm (Canon EF 50mm f/1.8)

### Information on the limitations of visualisations:

Visualisations of wind farms have a number of limitations which you should be aware of when using them to form a judgement on a wind farm proposal. These include:

- A visualisation can never show exactly what the wind farm will look like in reality due to factors such as: different lighting, weather and seasonal conditions which vary through time and the resolution of the image;
- The images provided give a reasonable impression of the scale of the turbines and the distance to the turbines, but can never be 100% accurate;
- A static image cannot convey turbine movement, or flicker or reflection from the sun on the turbine blades as they move;
- The viewpoints illustrated are representative of views in the area, but cannot represent visibility at all locations;
- To form the best impression of the impacts of the wind farm proposal these images are best viewed at the viewpoint location shown;
- The images must be printed at the right size to be viewed properly (260mm by 820mm);
- You should hold the images flat at a comfortable arm's length. If viewing these images on a wall or board at an exhibition, you should stand at arm's length from the image presented.
- The ZTV presented here takes no account of the screening effects of vegetation or buildings.

### Additional notes:

1. This figure has been based on the following parameters:  
Turbine layout file: LS36LORG2020019.WFL

- Hub height: 119m
- Rotor diameter: 162m
- Height to blade tip: 200m

2. Turbine positions could be subject to micro-siting (typically up to 50m).
3. Direction given as bearing relative to Grid North (BNG).

4. The number of turbine blades and hubs theoretically visible is counted from the wireframe in sets of 3 and ignores the screening effects of any intervening objects and forestry.

Client

**RWE**

Log Wind Farm  
EIA Report

**Figure 9.35a**  
**Viewpoint 14: Guffock Hill**

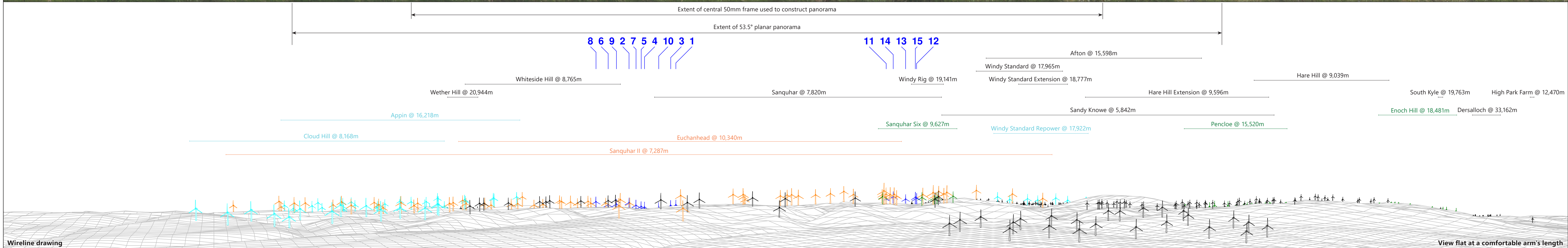
October 2022

**WSP**



Baseline photograph

This image provides landscape and visual context only



Wireline drawing

Notes: Turbines 1, 2, 8, 9, 11, 12, 13 and 15 would be lit at the hub with a visible red aviation warning light.  
 Afton, Dersalloch, Hare Hill Extension, Sandy Knowe, Sanquhar, South Kyle, Whiteside Hill, Windy Rig and Windy Standard Extension Wind Farms have been montaged onto the existing view, as they were not fully built at the date and time of the photograph.

Wind Farm Key: Lorg Wind Farm Existing Consented Application Scoping

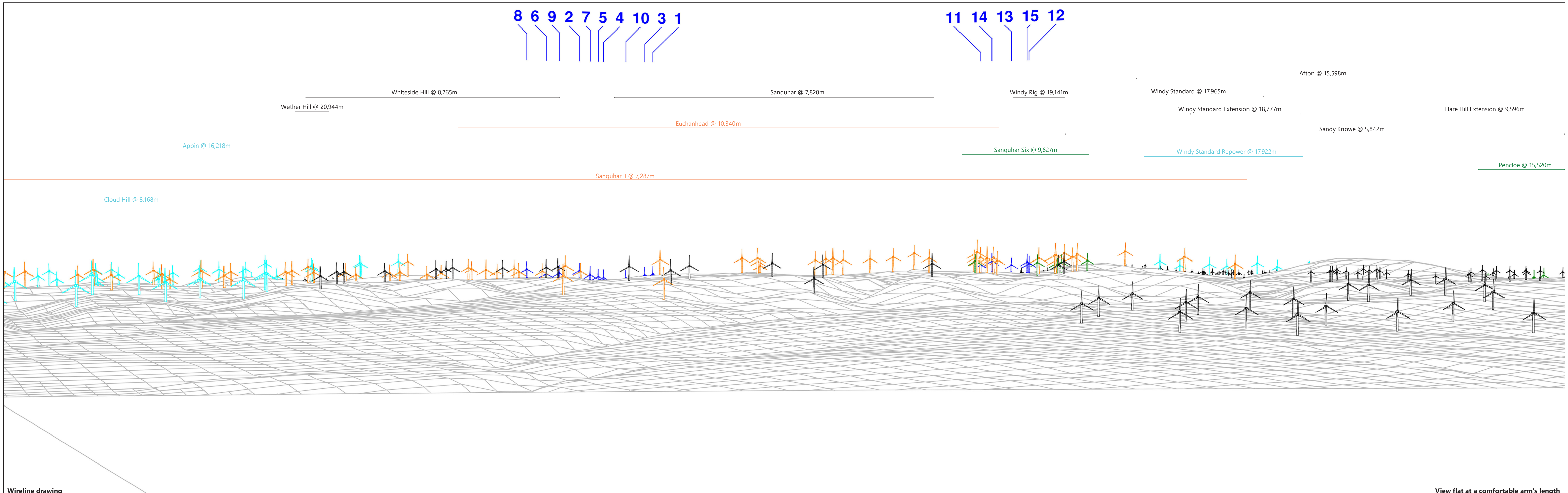
OS reference:	E274 952, N614 577	Horizontal field of view:	90° (cylindrical projection)	Camera:	Canon EOS 5D Mk2
Eye level:	466.5m AOD	Principal distance:	522mm	Lens:	50mm (Canon EF 50mm f/1.8)
Direction of view:	194°	Paper size:	841mm x 297mm (half A1)	Camera height:	1.5m AGL
Nearest turbine:	14,930m	Correct printed image size:	820 x 130mm	Date and time:	15/07/2015 09:10



Client  
 Lorg Wind Farm  
 EIA Report

Figure 9.35b  
 Viewpoint 14: Guffock Hill

Originator: wis03  
 H:\Data\Projects\32964-36 SUB Long FE\WVA\DD\Drawings\2022 536\WP14 Guffock Hill 32964-G05634\_R4.indd



**Wireline drawing**

Note: Turbines 1, 2, 8, 9, 11, 12, 13 and 15 would be lit at the hub with a visible red aviation warning light.

**Wind Farm Key:** Lorg Wind Farm Existing Consented Application Scoping

OS reference:	E274 952, N614 577	Horizontal field of view:	53.5° (planar projection)	Camera:	Canon EOS 5D Mk2
Eye level:	466.5m AOD	Principal distance:	812.5mm	Lens:	50mm (Canon EF 50mm f/1.8)
Direction of view:	194°	Paper size:	841mm x 297mm (half A1)	Camera height:	1.5m AGL
Nearest turbine:	14,930m	Correct printed image size:	820 x 260mm	Date and time:	15/07/2015 09:10



Client  
Lorg Wind Farm  
EIA Report

**Figure 9.35c**  
**Viewpoint 14: Guffock Hill**

View flat at a comfortable arm's length

October 2022



H:\Data\Projects\32964 - 36 SUB Lorg FEl\VA\DD\Drawings\2022\36\WP14 Guffock Hill\32964-GD5634\_R4.indd Originator: wis33



Photomontage

Note: Afton, Dersalloch, Hare Hill Extension, Sandy Knowe, Sanquhar, South Kyle, Whiteside Hill, Windy Rig and Windy Standard Extension Wind Farms have been montaged onto the existing view, as they were not fully built at the date and time of the photograph.

OS reference:	E274 952, N614 577	Horizontal field of view:	53.5° (planar projection)	Camera:	Canon EOS 5D Mk2
Eye level:	466.5m AOD	Principal distance:	812.5mm	Lens:	50mm (Canon EF 50mm f/1.8)
Direction of view:	194°	Paper size:	841mm x 297mm (half A1)	Camera height:	1.5m AGL
Nearest turbine:	14,930m	Correct printed image size:	820 x 260mm	Date and time:	15/07/2015 09:10



Client  
Lorg Wind Farm  
EIA Report

**Figure 9.35d**  
**Viewpoint 14: Guffock Hill**

View flat at a comfortable arm's length

October 2022



H:\Data\Projects\32964 - 36 SUB Long FEI\VA\DD40\Drawings\2022 536\WP14 Guffock Hill 32964-G05634\_R4.indd Originator: wis03



<b>Photomontage</b>								<b>View flat at a comfortable arm's length</b>		
Notes: This 90 degree FoV photomontage is produced in addition to the NatureScot 'Visual Representation of Wind Farms' guidance and illustrates the Proposed Development in its landscape setting. Afton, Dersalloch, Hare Hill Extension, Sandy Knowe, Sanquhar, South Kyle, Whiteside Hill, Windy Rig and Windy Standard Extension Wind Farms have been montaged onto the existing view, as they were not fully built at the date and time of the photograph.		OS reference:	E274 952, N614 577	Horizontal field of view:	90° (cylindrical projection)	Camera:	Canon EOS 5D Mk2	Client:	RWE	Lorg Wind Farm EIA Report
		Eye level:	466.5m AOD	Principal distance:	522mm	Lens:	50mm (Canon EF 50mm f/1.8)			<b>Figure 9.35e</b> <b>Viewpoint 14: Guffock Hill</b>
		Direction of view:	194°	Paper size:	841mm x 297mm (half A1)	Camera height:	1.5m AGL			October 2022
		Nearest turbine:	14,930m	Correct printed image size:	820 x 260mm	Date and time:	15/07/2015 09:10			

Originator: wis03  
 H:\Data\Projects\32964 - 36 SUB Long FEI\LVA\DD40\Drawings\2022 536\WP14 Guffock Hill 32964-G05634\_R4.indd