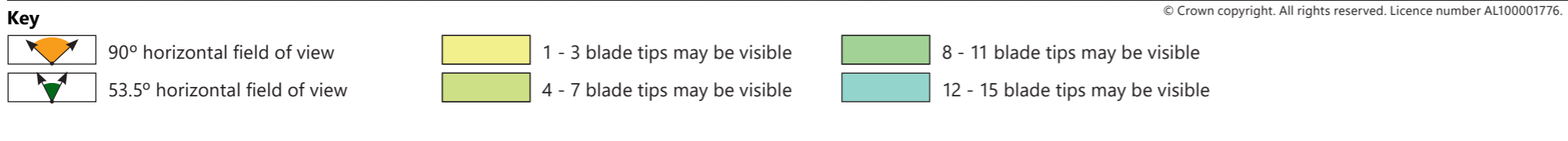
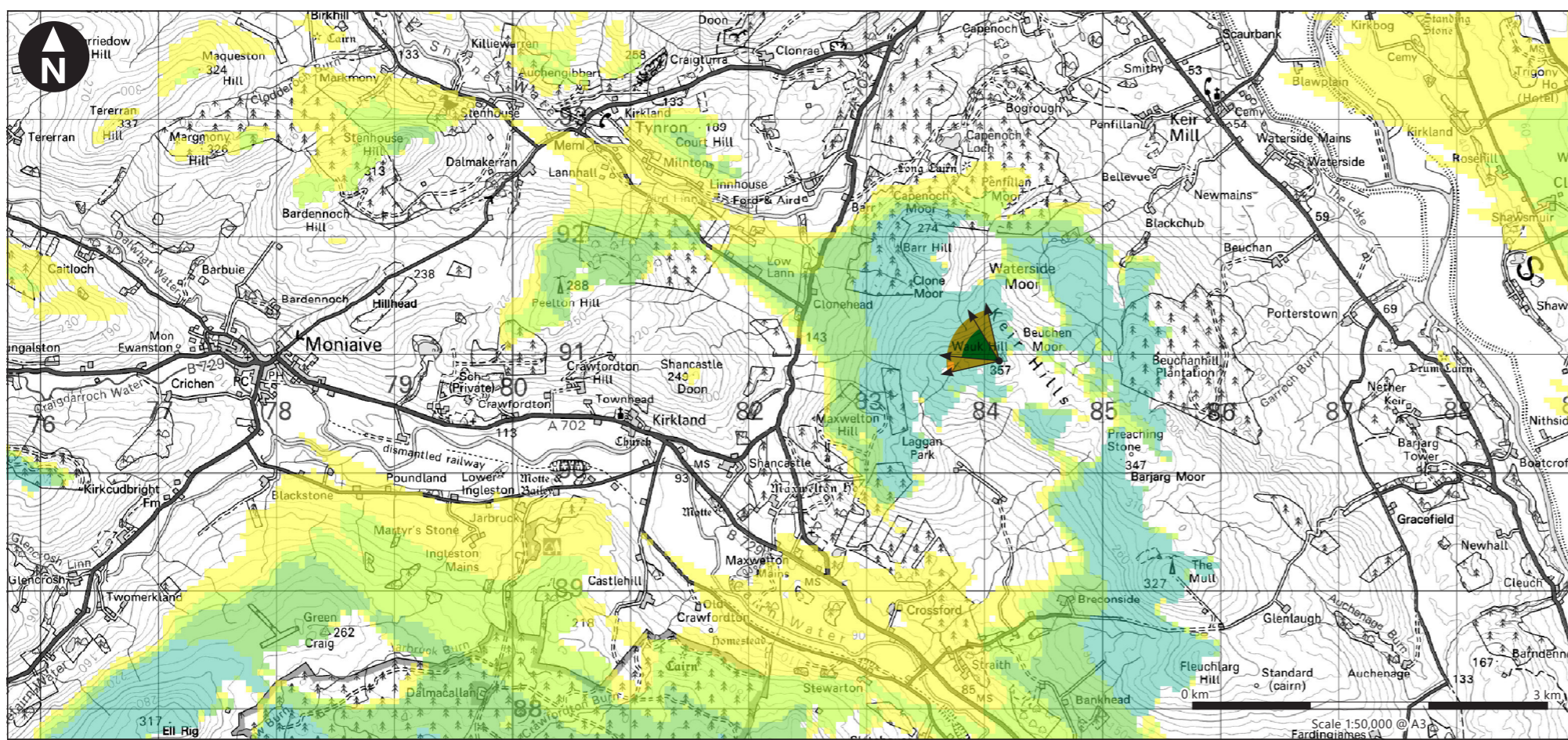
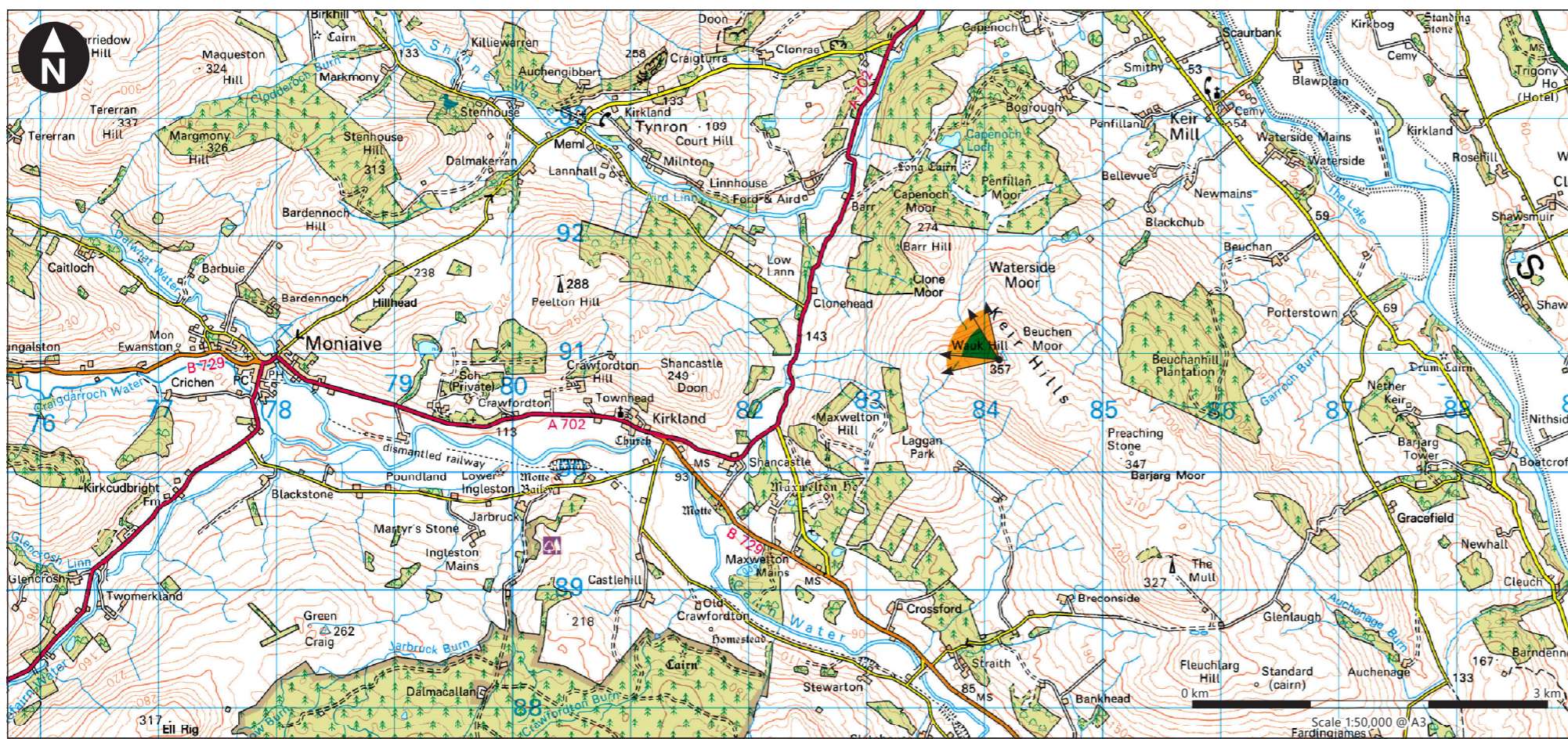


H:\data\Projects\32964 - 36 SUB Long FEI\A\040\Drawings\2022 536\VP15 Keir Hills 32964 - G05635\_R4.indd Originator: wilsc03



**Viewpoint Parameters**

OS reference:	E284 127, N590 943
Ground Level Elevation:	357m AOD
Camera Height:	1.5m AGL
Direction of view to site centre <sup>3</sup> :	299°
Distance to nearest turbine:	17,460m
Number of blade tips theoretically visible <sup>4</sup> :	15
Number of hubs theoretically visible <sup>4</sup> :	8
Date and time of viewpoint photography:	02/06/2013 @ 13:45
Camera:	Canon EOS 5D Mk2
Lens:	50mm (Canon EF 50mm f/1.8)

**Information on the limitations of visualisations:**

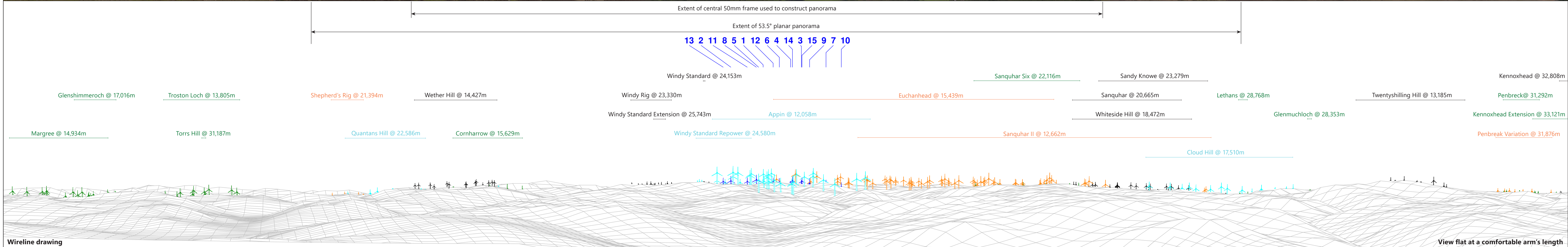
Visualisations of wind farms have a number of limitations which you should be aware of when using them to form a judgement on a wind farm proposal. These include:

- A visualisation can never show exactly what the wind farm will look like in reality due to factors such as: different lighting, weather and seasonal conditions which vary through time and the resolution of the image;
- The images provided give a reasonable impression of the scale of the turbines and the distance to the turbines, but can never be 100% accurate;
- A static image cannot convey turbine movement, or flicker or reflection from the sun on the turbine blades as they move;
- The viewpoints illustrated are representative of views in the area, but cannot represent visibility at all locations;
- To form the best impression of the impacts of the wind farm proposal these images are best viewed at the viewpoint location shown;
- The images must be printed at the right size to be viewed properly (260mm by 820mm);
- You should hold the images flat at a comfortable arm's length. If viewing these images on a wall or board at an exhibition, you should stand at arm's length from the image presented.
- The ZTV presented here takes no account of the screening effects of vegetation or buildings.

**Additional notes:**

1. This figure has been based on the following parameters:  
Turbine layout file: LS36LORG2020019.WFL
  - Hub height: 119m
  - Rotor diameter: 162m
  - Height to blade tip: 200m
2. Turbine positions could be subject to micro-siting (typically up to 50m).
3. Direction given as bearing relative to Grid North (BNG).
4. The number of turbine blades and hubs theoretically visible is counted from the wireframe in sets of 3 and ignores the screening effects of any intervening objects and forestry.

Client	
Long Wind Farm EIA Report	
<b>Figure 9.36a</b> <b>Viewpoint 15: Keir Hills</b>	
October 2022	



**Wireline drawing**

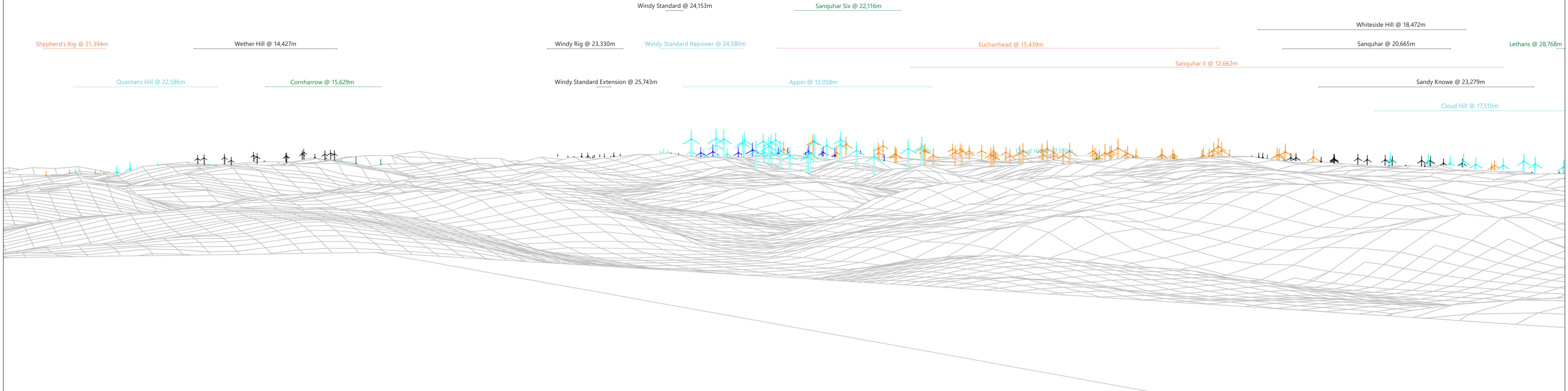
Notes: Turbines 2, 8, 9, 10, 11, 12, 13 and 15 would be lit at the hub with a visible red aviation warning light. Kennoxhead, Sandy Knowe, Sanquhar, Twentysilling Hill, Whiteside Hill, Windy Rig and Windy Standard Extension Wind Farms have been montaged onto the existing view, as they were not fully built at the date and time of the photograph.

**Wind Farm Key:** Lorg Wind Farm Existing Consented Application Scoping

OS reference:	E284 127, N590 943	Horizontal field of view:	90° (cylindrical projection)	Camera:	Canon EOS 5D Mk2	Client:	RWE
Eye level:	358.5m AOD	Principal distance:	522mm	Lens:	50mm (Canon EF 50mm f/1.8)	Lorg Wind Farm EIA Report	<b>Figure 9.36b</b> Viewpoint 15: Keir Hills
Direction of view:	302°	Paper size:	841mm x 297mm (half A1)	Camera height:	1.5m AGL		October 2022
Nearest turbine:	17,460m	Correct printed image size:	820 x 130mm	Date and time:	02/06/2013 13:45		

Originator: wis03  
H:\data\Projects\32964-36 SUB Lorg FEI\VA\LD\04\Drawings\2022 536\WP15 Keir Hills 32964-G05635\_R4.indd

13 2 11 8 5 1 12 6 4 14 3 15 9 7 10



Shepherd's Rig @ 21,394m

Wether Hill @ 14,427m

Quantans Hill @ 22,586m

Cornharrow @ 15,629m

Windy Standard @ 24,153m

Sanquhar Six @ 22,116m

Windy Rig @ 23,330m

Windy Standard Repower @ 24,580m

Euchanhead @ 15,439m

Whiteside Hill @ 18,472m

Sanquhar @ 20,665m

Lethans @ 28,768m

Sanquhar II @ 12,662m

Windy Standard Extension @ 25,743m

Appin @ 12,058m

Sandy Knowe @ 23,279m

Cloud Hill @ 17,510m

Cloud Hill @ 17,510m

**Wireline drawing**

Note: Turbines 2, 8, 9, 10, 11, 12, 13 and 15 would be lit at the hub with a visible red aviation warning light.

<b>Wind Farm Key:</b>	Lorg Wind Farm	Existing	Consented	Application	Scoping
-----------------------	----------------	----------	-----------	-------------	---------

OS reference:	E284 127, N590 943	Horizontal field of view:	53.5° (planar projection)	Camera:	Canon EOS 5D Mk2	Client:	RWE
Eye level:	358.5m AOD	Principal distance:	812.5mm	Lens:	50mm (Canon EF 50mm f/1.8)		Lorg Wind Farm EIA Report
Direction of view:	302°	Paper size:	841mm x 297mm (half A1)	Camera height:	1.5m AGL		<b>Figure 9.36c</b> Viewpoint 15: Keir Hills
Nearest turbine:	17,460m	Correct printed image size:	820 x 260mm	Date and time:	02/06/2013 13:45		October 2022

View flat at a comfortable arm's length



H:\Data\Projects\32964 - 36 SUB Long FEI\LVA\LD40\Drawings\2022 536\WP15 Keir Hills 32964\_GOS535\_R4.indd Originator: wis03



Photomontage

Note: Kennoxhead, Sandy Knowe, Sanquhar, Twentysilling Hill, Whiteside Hill, Windy Rig and Windy Standard Extension Wind Farms have been montaged onto the existing view, as they were not fully built at the date and time of the photograph.

OS reference:	E284 127, N590 943	Horizontal field of view:	53.5° (planar projection)	Camera:	Canon EOS 5D Mk2
Eye level:	358.5m AOD	Principal distance:	812.5mm	Lens:	50mm (Canon EF 50mm f/1.8)
Direction of view:	302°	Paper size:	841mm x 297mm (half A1)	Camera height:	1.5m AGL
Nearest turbine:	17,460m	Correct printed image size:	820 x 260mm	Date and time:	02/06/2013 13:45



Client  
Lorg Wind Farm  
EIA Report

Figure 9.36d  
Viewpoint 15: Keir Hills

View flat at a comfortable arm's length

October 2022

