

Viewpoint Parameters

OS reference:	E249 787, N587 060
Ground Level Elevation:	814m AOD
Camera Height:	1.5m AGL
Direction of view to site centre ³ :	52°
Distance to nearest turbine:	19,700m
Number of blade tips theoretically visible ⁴ :	15
Number of hubs theoretically visible ⁴ :	15
Date and time of viewpoint photography:	16/05/2013 @ 14:30
Camera:	Canon EOS 5D Mk2
Lens:	50mm (Canon EF 50mm f/1.8)

Information on the limitations of visualisations:

Visualisations of wind farms have a number of limitations which you should be aware of when using them to form a judgement on a wind farm proposal. These include:

- A visualisation can never show exactly what the wind farm will look like in reality due to factors such as: different lighting, weather and seasonal conditions which vary through time and the resolution of the image;
- The images provided give a reasonable impression of the scale of the turbines and the distance to the turbines, but can never be 100% accurate;
- A static image cannot convey turbine movement, or flicker or reflection from the sun on the turbine blades as they move;
- The viewpoints illustrated are representative of views in the area, but cannot represent visibility at all locations;
- To form the best impression of the impacts of the wind farm proposal these images are best viewed at the viewpoint location shown;
- The images must be printed at the right size to be viewed properly (260mm by 820mm);
- You should hold the images flat at a comfortable arm's length. If viewing these images on a wall or board at an exhibition, you should stand at arm's length from the image presented.
- The ZTV presented here takes no account of the screening effects of vegetation or buildings.

Additional notes:

1. This figure has been based on the following parameters:
Turbine layout file: LS36LORG2020019.WFL

- Hub height: 119m
- Rotor diameter: 162m
- Height to blade tip: 200m

2. Turbine positions could be subject to micro-siting (typically up to 50m).

3. Direction given as bearing relative to Grid North (BNG).

4. The number of turbine blades and hubs theoretically visible is counted from the wireframe in sets of 3 and ignores the screening effects of any intervening objects and forestry.

Client

RWE

Long Wind Farm
EIA Report

Figure 9.37a
Viewpoint 16: Corserine

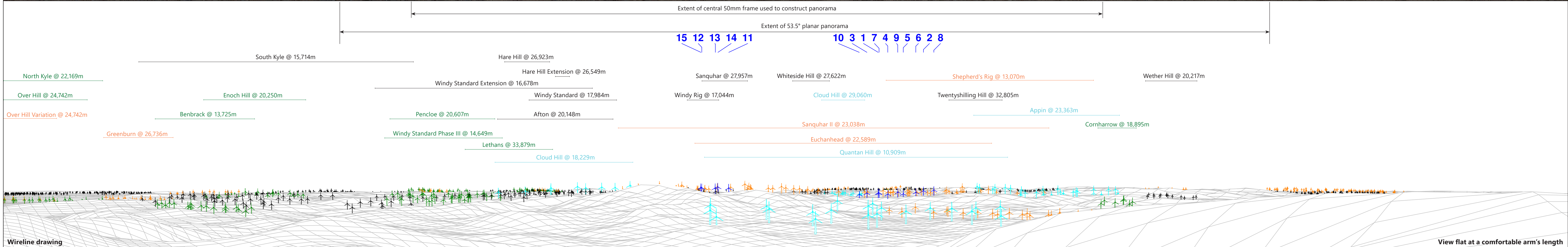
October 2022

WSP



Baseline photograph

This image provides landscape and visual context only



Wireline drawing

Notes: Turbines 1, 2, 8, 9, 10, 11, 12, 13 and 15 would be lit at the hub with a visible red aviation warning light. Kennoxhead, Sandy Knowe, Sanquhar, Twentyshilling Hill, Whiteside Hill, Windy Rig and Windy Standard Extension Wind Farms have been montaged onto the existing view, as they were not fully built at the date and time of the photograph. Cumulative wind farms beyond 30km are not labelled on the wireline due to legibility and business of the image. However, they are still illustrated on the wireline.

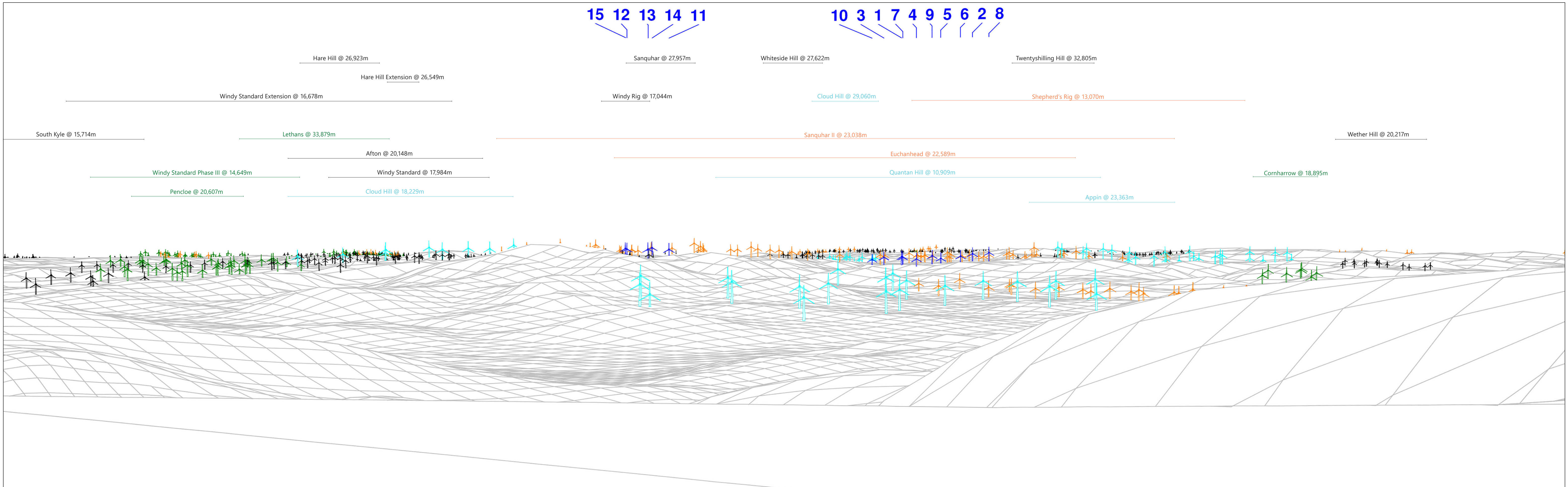
Wind Farm Key: Lorg Wind Farm Existing Consented Application Scoping

OS reference:	E249 787, N587 060	Horizontal field of view:	90° (cylindrical projection)	Camera:	Canon EOS 5D Mk2
Eye level:	815.5m AOD	Principal distance:	522mm	Lens:	50mm (Canon EF 50mm f/1.8)
Direction of view:	47°	Paper size:	841mm x 297mm (half A1)	Camera height:	1.5m AGL
Nearest turbine:	19,700m	Correct printed image size:	820 x 130mm	Date and time:	16/05/2013 14:30



Client
Lorg Wind Farm
EIA Report

Figure 9.37b
Viewpoint 16: Corserine



Wireline drawing
 Note: Turbines 1, 2, 8, 9, 10, 11, 12, 13 and 15 would be lit at the hub with a visible red aviation warning light.
 Cumulative wind farms beyond 30km are not labelled on the wireline due to legibility and business of the image. However, they are still illustrated on the wireline.

Wind Farm Key: Lorg Wind Farm Existing Consented Application Scoping

OS reference:	E249 787, N587 060	Horizontal field of view:	53.5° (planar projection)	Camera:	Canon EOS 5D Mk2
Eye level:	815.5m AOD	Principal distance:	812.5mm	Lens:	50mm (Canon EF 50mm f/1.8)
Direction of view:	47°	Paper size:	841mm x 297mm (half A1)	Camera height:	1.5m AGL
Nearest turbine:	19,700m	Correct printed image size:	820 x 260mm	Date and time:	16/05/2013 14:30



Client
 Lorg Wind Farm
 EIA Report

Figure 9.37c
Viewpoint 16: Corserine

H:\data\projects\32964 - 3p SUB Lorg FEI\VA\DD40\Drawings\2022\3p\WP16 Corserine 32964 - 60663E_R4.mxd
 Originator: wilco3



Photomontage

Note: Kennoxhead, Sandy Knowe, Sanquhar, Twentysilling Hill, Whiteside Hill, Windy Rig and Windy Standard Extension Wind Farms have been montaged onto the existing view, as they were not fully built at the date and time of the photograph.

OS reference:	E249 787, N587 060	Horizontal field of view:	53.5° (planar projection)	Camera:	Canon EOS 5D Mk2
Eye level:	815.5m AOD	Principal distance:	812.5mm	Lens:	50mm (Canon EF 50mm f/1.8)
Direction of view:	47°	Paper size:	841mm x 297mm (half A1)	Camera height:	1.5m AGL
Nearest turbine:	19,700m	Correct printed image size:	820 x 260mm	Date and time:	16/05/2013 14:30

Client



Lorg Wind Farm
EIA Report

Figure 9.37d
Viewpoint 16: Corserine

View flat at a comfortable arm's length

October 2022



H:\Data\Projects\32964 - 36 SUB Long FEI\LVA\DD40\Drawings\2022 36\WP16 Corserine 32964 - 60663E_R4.mxd Originator: willc03