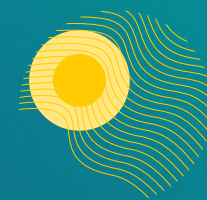


RWE



Solar & Storage UK Developer's Charter

RWE is a global leader in renewables, with significant experience and expertise in the development, construction and operation of innovative clean energy technologies.

This charter sets out 15 commitments for how RWE will develop all our UK solar and co-located storage projects. We are committed to delivering projects that benefit the local community and the natural environment and that respect local heritage and the landscape.



Good land management

1

We will design all our projects to maximise opportunities for local wildlife, supporting the creation of diverse habitats on-site, and delivering significant biodiversity benefits in the process. We commit to delivering on average a 50% habitat Biodiversity Net Gain across our solar farms, 5 times the national requirement, to support the government's vital nature recovery targets alongside the delivery of net zero.

2

In line with national planning policy, we will seek to protect best and most versatile agricultural land wherever possible, and will support local farmers by providing them with a stable long-term income, supporting farm businesses to be more financially secure, invest in improvements to their operations, and continue to farm on their most productive fields.

3

We will seek to ensure efficient use of available land and grid infrastructure by co-locating solar and battery storage to maximise the amount of renewable energy our projects can provide to the UK energy mix and support efficient delivery of the UK's decarbonisation targets.

4

We will promote measures to improve soil quality across all our projects, working with landowners and local authorities to agree landscape management plans that minimise the use of chemicals and promote grazing to manage the grounds in an ecologically sensitive way throughout the lifetime of the project.

5

At the end of a project's life, we will responsibly decommission the project and will return the land in the same or improved condition. We will ensure the site's greenfield status is protected and can be returned to its original use after the development is decommissioned.



Meaningful community engagement & benefits

6

We commit to regular and meaningful engagement with the local community throughout the development process, and we will listen to the input of the community to refine and improve project proposals.

7

We will provide a Community Benefit Fund for the local community to support local initiatives that will make a lasting difference for residents and leave a positive legacy.

8

We will support community health and wellbeing through the creation of new green spaces and green infrastructure across our sites, such as community orchards, wildflower meadows, outdoor educational spaces, picnic areas, new permissive paths, and more.

9

We will prioritize the use of local labour and contractors during the construction and operation of our sites to stimulate growth and investment in the local economy. Additionally, we will support local businesses through supply chain spending and business rates.



Respect for local heritage & the rural environment

10

We will enhance and improve opportunities for public use and enjoyment of existing public rights of ways and create new permissive paths that link up with the existing network.

11

We will minimise the impact of traffic on the local community throughout the construction and operation of our projects through a comprehensive construction management plan.

12

We will minimise any potential impacts on local heritage assets and sites of archaeological significance with thorough impact assessments and mitigation plans.

Responsible sourcing respect for human rights & the environment

13

We will ensure sustainable waste management and recycling practices throughout the construction, operation, and decommissioning of our projects.

14

We commit to upholding human rights and labour rights in accordance with both national and international law. We require our own teams as well as all our business partners and suppliers, to adhere to these laws. We take ethical business practice very seriously and have a zero-tolerance policy to human rights violations.

15

We will work to drive forward the highest traceability and environmental sustainability standards across all our supply chains, in partnership with our suppliers, the UK solar industry, and our international partners in Europe and beyond.



uk.rwe.com/solar

