

RWE

In our communities

Impact updates from our UK wind farm community funds
Annual report 2022



Putting our communities first

RWE wind farm community funds change lives for the better. As one of the world's leading renewable energy firms, we've made it our mission to make a significant and positive impact on the lives of local people.

Whether we're bringing people together, fighting climate change, improving community services, boosting tourism or creating new job opportunities, we're proud to see our funds out there in the communities we operate.

Thanks to renewable energy, communities can access the support we offer and invest it into projects where it's needed most.

Our funding process is simple, flexible, inclusive and long-lasting, and it's helping to generate a better future for the people and places we care about.

By the end of December 2022, onshore and offshore wind farm projects operated by RWE across the UK had invested more than £33 million into local communities.

Over their operational lifetime, they will deliver a total investment of more than £100 million into local communities across the UK.

So we're just getting started.

In 2022 these funds helped to create:

 **53**
Jobs

 **193**
Safeguarding of jobs

 **3,926**
Volunteering opportunities

 **15,255**
Education & training opportunities

 **£5m**
Match funding



Tom Glover

RWE UK Country Chair

“

I love seeing the difference we're making out in the community



We want to see communities thrive. Although I'm proud we've been able to invest £33 million into community projects over the last 25 years, what's more important to me is the difference we've made for local people across the UK – our neighbours.

Whether our funds are used to keep people connected, boost sustainability, or to educate; keeping local people at the heart of what we do is a priority for us here at RWE.

Because as well as making a positive contribution to the communities we serve, we want to see our funds helping with the UK's transition to net zero – and we're not going to get there without people power.

I've been fascinated to watch first-hand as the residents we're involved with have used our wind farm funds to fuel their community projects.

Communal electric vehicles to keep people connected while driving down emissions, improving energy efficiency for community buildings and even creating and sustaining local jobs...these are all fantastic examples of how RWE funding is out there directly making a difference.

Seeing the interesting and innovative ways communities are choosing to use our wind farm funding has been both heart-warming and inspiring. These are truly exciting times.

We're using our energy for a sustainable future.

Tom



How our funding works

Our approach to community funding explained



It's all about you

Meeting the needs of the local area is what we're here for.



Every community is different

We tailor our funds to meet the unique and changing needs of communities and we take a bespoke approach for every allocation.



Local knowledge is best

We want communities to be at the heart of decision-making: we recruit local panels with the knowledge to call the shots on what we fund and how, and our funds are usually managed locally by professional grant making organisations.



We adapt

Our funds can respond rapidly to emergencies and unforeseen challenges – so we're there to help communities through unexpected events such as floods, the pandemic, or the cost-of-living crisis.



We flex

Our adaptable approach means we can support projects through grants, loans or even by investing.



We listen

We take a flexible approach and listen to consultation responses to find out how the area surrounding the site is used for living, working and recreation.



Ensuring legal compliance

Funds are secured through legal agreements for the future and to mandate good governance.



We keep it simple

So, the application process is easy, straight forward and with as little bureaucracy as possible!



We're here for the long-haul

Our funds are long-term, and we encourage communities to plan for the future to support sustainable development and build a legacy for future generations.



Global goals

We measure our funds against the UN Sustainable Development Goals (SDGs) which are a universal call to action to end poverty, protect the planet and improve the lives and prospects of everyone, everywhere. Adopted by all UN Member States in 2015.



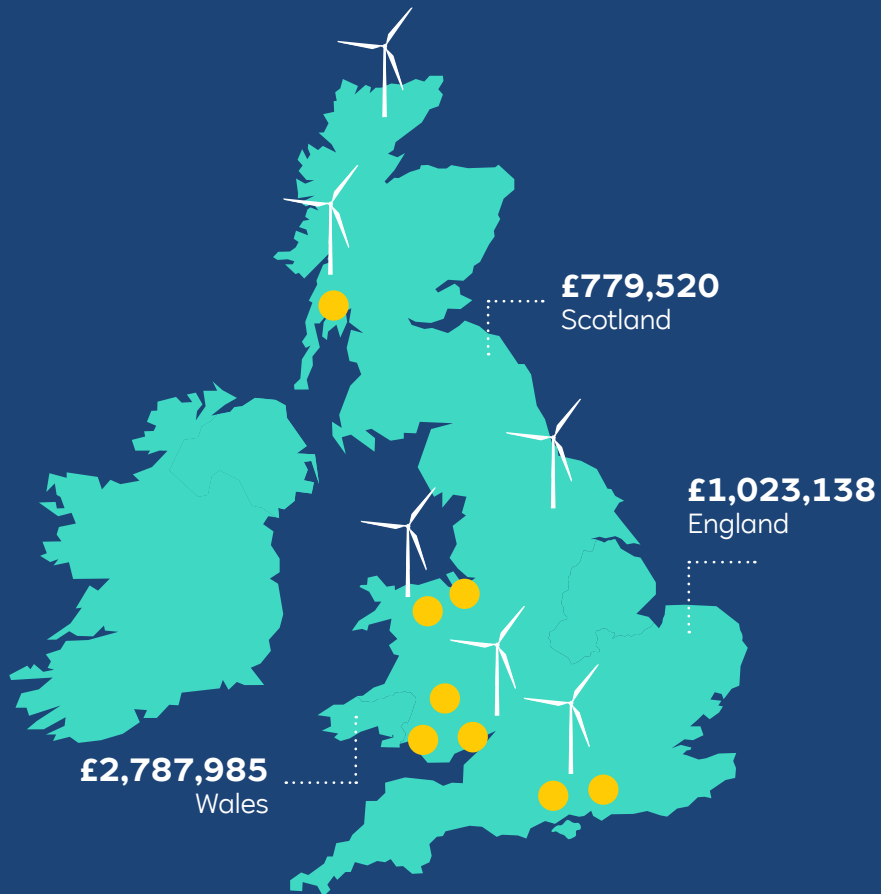
And this is just the beginning

We aim to future-proof benefits by securing and sign-posting match funding and curating partnerships with other funders.

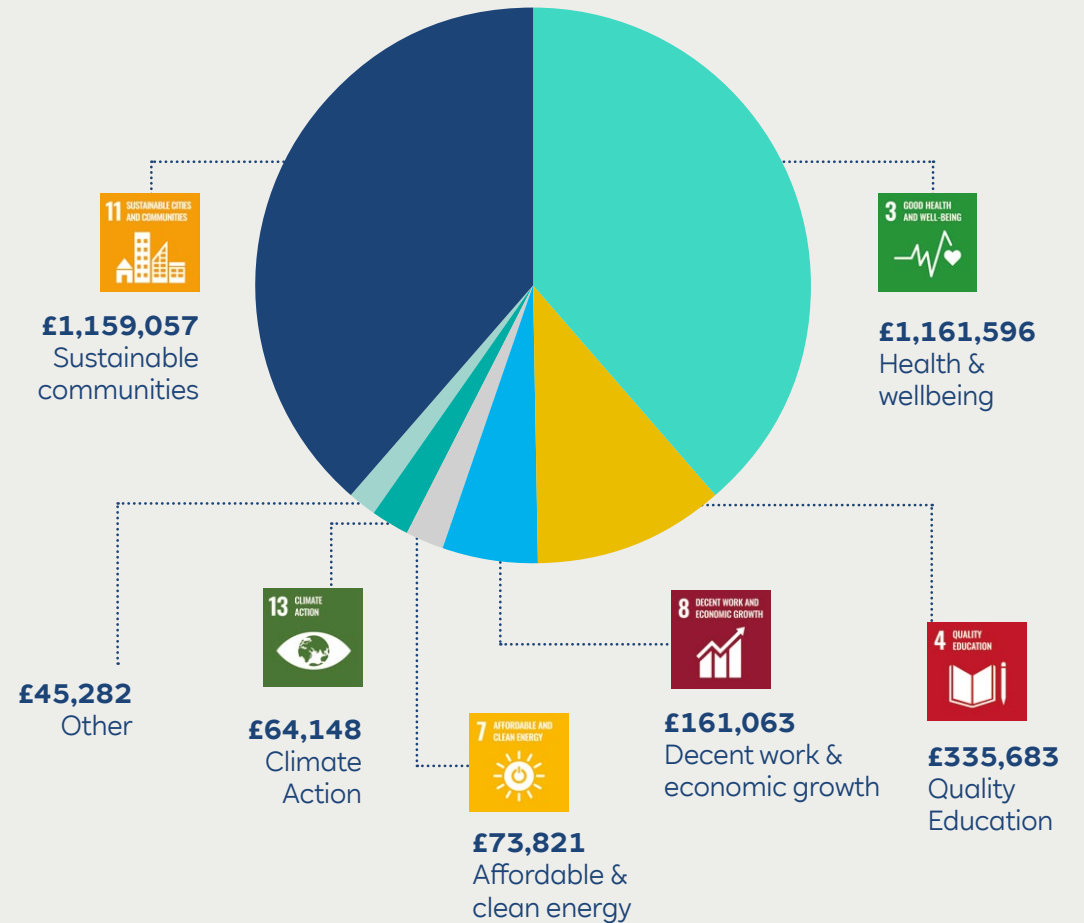
Our year in a snapshot

2022 - more than £4.5 million invested in community funds

Click on map location to see the case study



2022 grants made to support UN Sustainable Development Goals





Pedal Power



£20,000



Rampion Offshore Wind Farm

Providing 'wind in the hair' moments in West Sussex

Over the last two years, Rampion Offshore Wind Farm Community Fund has donated £20,000 to cycle group Pedal People, helping more people in need enjoy an outdoor cycling experience.

The Brighton-based charity offers elderly care home residents and those living with health challenges or disability the chance to ride out with experienced volunteer cycle pilots.

Thanks to Pedal Power, people who might rarely get outside can improve their health and wellbeing by enjoying free, safe trips around their local community, with fresh air, sunshine and company thrown in.

The wind farm funds were vital, helping purchase energy efficient cycle batteries as well as contributing to ongoing staffing and training costs.



Our impacts

Case studies



Building communities



£107,989



Brechfa Forest Onshore Wind Farm

Bringing a community together in Wales

Making their local village hall accessible has helped transform community life at Brechfa in Carmarthenshire.

Since 2018 funds from Brechfa Forest Onshore Wind Farm have been used to build an extension to nearby Brechfa Hall, giving disabled access and accessible toilets for the first time, with work completed by local builders, using 90% locally sourced materials.

The award also helped compensate for poor internet connection in the village, funding an 18-month pilot of a community IT hub at the hall, with much-needed fibre Internet connection, equipment and support sessions.

A new luncheon club is making full use of the hall, run by one paid staff and a pool of willing local volunteers it is giving socially isolated villagers the chance to meet up for a free three-course hot meal once a week.

The club was even able to continue through the pandemic, with meals delivered using a car also paid for by the community fund.

"The project has inspired others to open new community events in the hall, encouraging all age groups to us this wonderful resource."



Helping families



£16,000



An Suidhe Onshore Wind Farm

Boosting childcare facilities in Argyll

An injection of funding from multiple grants for a community-owned childcare facility is helping to revitalise the local economy too.

Cairndow Community Childcare provides affordable childcare for children aged six months to 12 years in Inveraray.

An acute labour shortage in the mid-Argyll area has been exacerbated by a lack of childcare, preventing local people from taking up employment, or families with young children from moving into the area.

As the only after-school or 'wrap-around' childcare service in the area outside term time, Cairndow Community Childcare is vital.

Now thanks to An Suidhe Wind Farm Community Fund, two new outdoor play areas have been built, helping the centre fulfil its aim of children spending 50% of their time outside.

“As parents of young children living in the area, we would not have been able to return to work without the childcare provided at Cairndow. The team there are so caring and have great relationships with the children which means we all have a great day - whatever the weather!”



Fighting poverty



£5,000



Little Cheyne Court Onshore Wind

Funding a brighter future for East Sussex

East Sussex residents living in poverty during the cost-of-living crisis are facing a brighter future thanks to funding for outreach work by the Hastings Advice and Representation Centre.

Little Cheyne Court Onshore Wind Farm has been able to fund a part-time specialist welfare benefits advisor and trainer for six months to help relieve poverty for some of the area's most geographically and socially isolated residents.

The advisor has conducted outreach sessions and supported clients to claim new welfare benefits, resolve issues and appeal benefit decisions.

The centres services had become over stretched so this funding was vital in helping them to meet this increased demand and to help many more local people.



229
people benefited



151
individual households supported



£233,449.68
increased or previously unclaimed welfare benefits secured



26
training sessions have up-skilled 117 front line workers





Princes Trust



£37,474



Gwynt y Môr Offshore Wind Farm

Supporting enterprise

The project has allowed Prince's Trust to expand their Enterprise Programme to a targeted region in North Wales. The pandemic and current economic climate have exacerbated the challenges faced by young people in the area.

They supported a host of young people to develop a greater understanding of self-employment and starting a business. They delivered several Explore Enterprise Courses, some delivered virtually, and one delivered face-to-face within the area of benefit.

One young person has already gone on to launch their own business selling unique gifts from recycled metals and materials.

This project has elevated the Prince's Trust presence in the area and they have gone on to request further funding from the UK Shared Prosperity Fund to continue to be able to deliver this programme.

"I was in a rough patch. I was homeless and unemployed. It made me realise how able I was to go self-employed, and the staff were really friendly and helpful, and was able to point me in the right direction of what advice I needed. Prince's Trust has been an amazing experience."



Funding innovation



£260,000
over 5 years



Brecha Forest Onshore Wind Farm

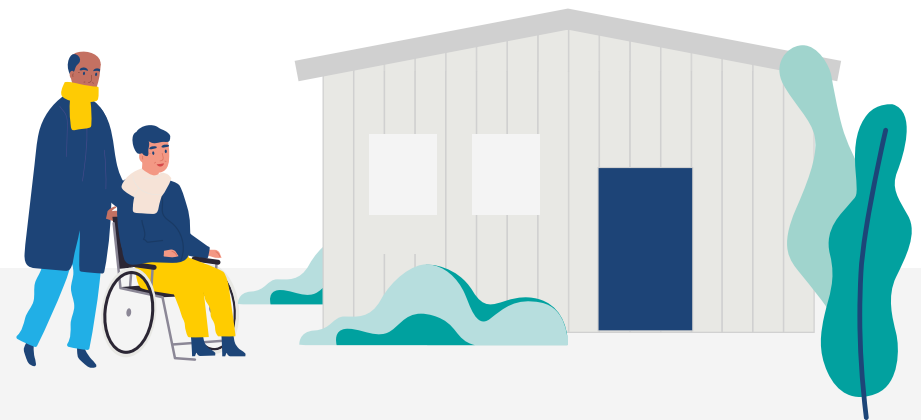
Providing a valuable new income stream for a Welsh hospice

The income generated from holiday accommodation created with wind farm funds is being used to help people with life-limiting illnesses.

Grants from Brechfa Forest Wind Farm to Skanda Vale Hospice in Carmarthenshire funded the purpose-built bunk house and self-catering accommodation, and income from its tourism enterprise was enough to cover the cost of a paid member of staff during 2021.

The hospice is confident the innovative new income stream will now be able to fund extra day care services, provide an end-of-life service, and reduce its dependence on grants.

"The RWE community fund gave us the unique opportunity to develop Skanda Hafan in order to provide long-term financial security for the Hospice and ensure we can continue to provide and develop this vital service to our local community and beyond."





Bringing nature back



£23,000



Clocaenog Forest Onshore Wind Farm

Giving rare wildlife species a chance to thrive in Wales

Some of the UK's most iconic wildlife creatures could see their numbers expand at a forest in North Wales, thanks to funding from a local wind farm.

Grants and Heritage Lottery match funding have been donated to the Clocaenog Red Squirrels Trust by Clocaenog Forest Wind Farm, with the aim of protecting and conserving some of our rarest mammals.

The Trust's Magic Mammals project is designed to boost numbers of both the red squirrel and the equally scarce pine marten at Clocaenog Forest.

It will also provide opportunities for local people to get involved in vital conservation work with the aim of empowering them with skills and confidence to transform their community's relationship with the natural world.



How Brechfa's first £ million is changing lives in Carmarthenshire

In just three years, the Brechfa West Wind Farm Community Fund has helped transform lives in a small corner of South West Wales, making an impressive 86 awards totalling more than £1 million.

"I see the community benefit fund as the most incredible opportunity our community has ever had, this is a game changer for the next generation...truly a once in a lifetime gift horse. It's made me passionate and committed to get this right as this money holds the answer to creating jobs and retaining young people in our community."

Brechfa Fund panel member

It's a real community affair too, with every award decided by a panel of volunteers who live, work or donate their time within the wind farm's 6km benefit zone.

Their local knowledge is invaluable in making informed choices about what's really important for the area. Applicants are supported by a locally based fund manager. Every decision is made by a panel of local people, backed up by Antur Cymru, an independent fund administrator.

Over the past three years, as well as generating significant match funding, the fund has helped create a lunch club, a cinema club and an IT hub, given grants to much-needed community facilities, including community centres, church halls, public toilets, schools and nurseries; paid salaries, boosted tourism, supported charities and responded to emergencies such as floods and the pandemic.

It's clear Brechfa West Wind Farm's fund is making a real impact on its closest neighbours. With a flexible approach, local knowledge and community support, Brechfa is transforming lives and proving that community-led initiatives can have a lasting impact.

Find out more at brechfawestcommunityfund.org.uk



Katy Woodington

Senior Community Investment Manager
(UK & Ireland)



Looking back at 2022: how challenge and opportunity are sparking hope for the future.

We've all faced significant challenges and seen big changes during 2022, now that 2023 is well underway I'm looking firmly to the future!

As we all know, the escalating cost of living crisis was at the forefront of most people's minds last year, and of course our communities were all still dealing with the devastating impact of the Covid-19 pandemic - on jobs, businesses, families and their way of life.

What became clear was how much more environmentally aware we are as a nation. I've been thrilled to see that reducing CO2 emissions is increasingly being highlighted as a priority by our neighbouring communities and during 2022 it was great to see our funds support 19 projects that will help communities on their own journey to net zero.

The range of exciting schemes included solar panels, electric vehicles and charging points for community use as well as energy audits and energy efficiency measures. It all adds up to a reassuring commitment to a cleaner, greener future.

Consultation continues to be key: and in North Wales, we gathered thoughts from local people about how our future Awel y Môr Offshore Wind Farm could best support. At this early stage people told us top priorities included: Local Community; Natural Environment; Training and Climate Change.

Looking forward, we are encouraging some of our funds to consider how they can spread the impact of our funding more widely. People across a wider regional area will be supported by the Caithness Wide Education and Training Fund, which was kickstarted by a £30,000 grant from Camster Wind Farm.

We're also committed to supporting our funds to take a more holistic view on what they do - really getting down to the grassroots of how the projects are adding value as a whole - not just in isolated pockets. Ultimately we would like them to build a long term legacy for future generations.

It's what our funds are all about - making a real, tangible difference to the communities we serve.

Katy



Find out more about our projects:
uk-ireland.rwe.com/in-your-community

£33 million

UK onshore and offshore wind farm projects operated by RWE across the UK have invested more than £33 million into local communities over their operational lifetime - till December 2022.

